



TRAC-LITES LOW VOLTAGE CONTEMPORARY R741

Project: _____

Fixture Type: _____

Location: _____

Contact/Phone: _____

PRODUCT DESCRIPTION

Socket Ceramic Bi-Pin.

Transformer 50VA 12V electronic transformer with circuit protection

- Sleek, miniature transformer housing minimizes fixture footprint
- Compatible with halogen lamps only.

Lamp 50W max. MR16 halogen (or MR16CG cover glass where specified).

Aiming 90° vertical aiming capability and 358° rotation.

Adapter Copper alloy contacts provide precise spring action

- True, positive electrical ground
- Spring-loaded locking latch with embossed polarity arrows secures trac light to trac
- Compatible with both Trac-Lites and Trac-Master Trac
- "Pull-up" contact to up position for use on Trac-Master two-circuit trac.

Labels UL/CUL listed.

Specifications subject to change without notice.

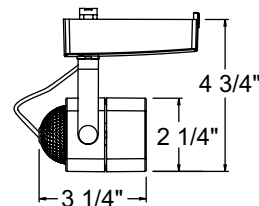


Low Voltage Cast Cube

Construction Die cast aluminum housing with die-formed steel yoke

- Accepts one media accessory in place of clear glass lens supplied.

Catalog Number	Finish	Lamp
R741 WH	White	12V, 20-50W Halogen MR16
R741 BL	Black	12V, 20-50W Halogen MR16
R741 SC	Satin Chrome	12V, 20-50W Halogen MR16



ACCESSORIES

Cat. No.	Description	Cat. No.	Description
CGF 200	Color Glass Filter	HCLBL 200	Hexagonal Cell Louver - Louver
DCCF 200	Dichroic Color Correction Filter	DIFF 200	Diffusion Glass Lens
DGF 200	Dichroic Glass Filter	UVF 200	UV Filter

See specification sheet [D1.2.2](#) for details.