



FLEX 12

Flexible Low Voltage Trac System

TRAPEZIA™ & GYRUS™

TF130 and TF140

Project: _____

Fixture Type: _____

Location: _____

Contact/Phone: _____

PRODUCT DESCRIPTION

Trapezia suspends the MR16 lamp down from the trac with the grace of a trapeze artist. Slender 9-inch long tubes conceal lamp lead wires feeding into an elegantly sculpted die cast lamp housing. The light airy appearance is great for display, exhibition and gallery lighting and the downward reach can make pendant mounting of trac unnecessary.

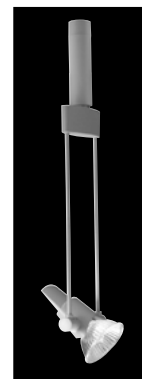
Gyrus combines dramatic aerodynamic styling with an integrated accessory holder that accepts industry-standard 2" diameter lenses and louvers. The snap-on design makes this an easy to accessorize fixture for more demanding display lighting applications.

Socket Ceramic bi-pin.

Aiming 90° vertical aiming capability and 358° rotation.

Labels UL listed, CSA certified.

Specifications subject to change without notice.



Low Voltage MR16 – Trapezia™

Lamp 50W MR16 lamps maximum • Must be used with MR16 lamps with integral lens (cover glass) except when combined with 2" accessories.

Construction Die-cast aluminum lamp housing with integral aiming handle
• Steel tubes conceal lamp lead wires.

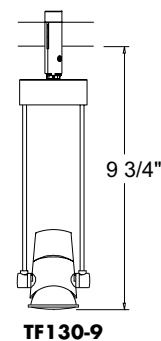
Accessories May be used with up to two 2" accessories and/or Barn Doors simultaneously with Accessory Holder.

Catalog Number	Description	Finish	Lamp
TF130 9IN SL	9" Rods	Silver	50W MR16CG with integral lens (cover glass), 12V or 24V

ACCESSORIES

Cat. No.	Description	Cat. No.	Description	Cat. No.	Description
CGF 200	Color Glass Filter	HCLBL 200	Hexagonal Cell Louver - Louver	LSPREAD 200	Linear Spread Glass Lens
DCCF 200	Dichroic Color Correction Filter	DIFF 200	Diffusion Glass Lens	SOLITE 200	Uniformity Lens (Solite)
DGF 200	Dichroic Glass Filter	UVF 200	UV Filter	PRISM 200	Prismatic Spread Glass Lens
T7400BL	Accessory Holder - Black	T7470BL	2" Diameter Barn Doors - Black		

See specification sheet [D1.2.2](#) for details. Other accessories can be found on specification sheet [D5.1.0](#).



Low Voltage MR16 – Gyrus™

Lamp 50W MR16 lamps maximum.

Lens Glass lens included with lampholder • May be used with up to two 2" accessories simultaneously.

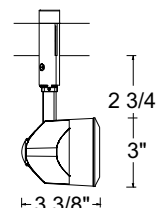
Construction Die-cast aluminum lamp housing • Extruded aluminum support stem conceals lamp lead wires.

Catalog Number	Description	Finish	Lamp
TF140 SL	Gyrus	Silver	50W MR16, 12V or 24V

ACCESSORIES

Cat. No.	Description	Cat. No.	Description	Cat. No.	Description
CGF 200	Color Glass Filter	HCLBL 200	Hexagonal Cell Louver - Louver	LSPREAD 200	Linear Spread Glass Lens
DCCF 200	Dichroic Color Correction Filter	DIFF 200	Diffusion Glass Lens	SOLITE 200	Uniformity Lens (Solite)
DGF 200	Dichroic Glass Filter	UVF 200	UV Filter	PRISM 200	Prismatic Spread Glass Lens

See specification sheet [D1.2.2](#) for details. Other accessories can be found on specification sheet [D5.1.0](#).



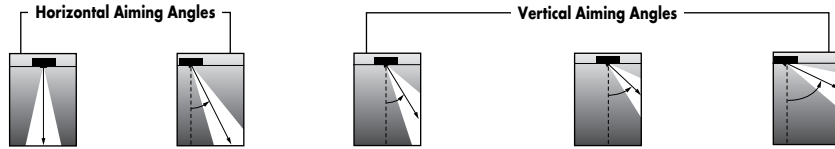
FLEX 12

Flexible Low Voltage Trac System

TRAPEZIA™ & GYRUS™

TF130 and TF140

CBCP • Centerbeam candlepower
FC • Footcandles at beam center (aim point)



Lamp	Beam Type	Beam Spread	Rated Life	CBCP	0°		30°			30°			45°				60°								
					MH	FC	L	W	FC	L	W	D	FC	X	L	W	FC	X	L	W	D	FC	X	L	W
Q35W MR16	SP	20°	5000	3900	4	244	1.4	1.4	158	1.9	1.6	2	122	3.5	3.1	1.4	345	2.0	1.5	1.0	4	158	2.3	1.9	1.6
					6	108	2.1	2.1	70	2.8	2.4	3	54	5.2	4.7	2.1	153	3.0	2.2	1.5	6	70	3.5	2.8	2.4
					8	61	2.8	2.8	40	3.8	3.3	4	31	6.9	6.2	2.8	86	4.0	2.9	2.0	8	40	4.6	3.8	3.3
					10	39	3.5	3.5	25	4.7	4.1	5	20	8.7	7.8	3.5	55	5.0	3.6	2.5	10	25	5.8	4.7	4.1
	FL	40°	5000	1000	4	63	2.9	2.9	41	4.1	3.4	2	31	3.5	9.6	2.9	88	2.0	3.4	2.1	4	41	2.3	4.1	3.4
					6	28	4.4	4.4	18	6.1	5.0	3	14	5.2	14.5	4.4	39	3.0	5.0	3.1	6	18	3.5	6.1	5.0
					8	16	5.8	5.8	10	8.1	6.7	4	8	6.9	19.3	5.8	22	4.0	6.7	4.1	8	10	4.6	8.1	6.7
					10	10	7.3	7.3	6	10.2	8.4	5	5	8.7	24.1	7.3	14	5.0	8.4	5.1	10	6	5.8	10.2	8.4
	NFL	15°	6000	9100	4	638	1.0	1.0	414	1.3	1.1	2	319	3.5	2.1	1.0	902	2.0	1.0	0.7	8	104	4.6	2.6	2.3
					6	283	1.5	1.5	184	2.0	1.7	3	142	5.2	3.1	1.5	401	3.0	1.5	1.0	10	66	5.8	3.3	2.8
					8	159	2.0	2.0	104	2.6	2.3	4	80	6.9	4.1	2.0	225	4.0	2.0	1.4	12	46	6.9	3.9	3.4
					10	102	2.5	2.5	66	3.3	2.8	5	51	8.7	5.1	2.5	144	5.0	2.5	1.7	14	34	8.1	4.6	4.0
FL	25°	6000	3200	4	213	1.9	1.9	138	2.6	2.2	2	106	3.5	4.6	1.9	301	2.0	2.0	1.4	4	138	2.3	2.6	2.2	
				6	94	2.9	2.9	61	3.9	3.3	3	47	5.2	7.0	2.9	134	3.0	3.1	2.0	6	61	3.5	3.9	3.3	
				8	53	3.8	3.8	35	5.2	4.4	4	27	6.9	9.3	3.8	75	4.0	4.1	2.7	8	35	4.6	5.2	4.4	
				10	34	4.8	4.8	22	6.5	5.5	5	17	8.7	11.6	4.8	48	5.0	5.1	3.4	10	22	5.8	6.5	5.5	
FL	40°	6000	1700	4	116	2.9	2.9	75	4.1	3.4	2	58	3.5	9.6	2.9	164	2.0	3.4	2.1	4	75	2.3	4.1	3.4	
				6	51	4.4	4.4	33	6.1	5.0	3	26	5.2	14.5	4.4	73	3.0	5.0	3.1	6	33	3.5	6.1	5.0	
				8	29	5.8	5.8	19	8.1	6.7	4	14	6.9	19.3	5.8	41	4.0	6.7	4.1	8	19	4.6	8.1	6.7	
				10	19	7.3	7.3	12	10.2	8.4	5	9	8.7	24.1	7.3	26	5.0	8.4	5.1	10	12	5.8	10.2	8.4	
FL	40°	6000	1700	4	116	2.9	2.9	75	4.1	3.4	2	58	3.5	9.6	2.9	164	2.0	3.4	2.1	4	75	2.3	4.1	3.4	
				6	51	4.4	4.4	33	6.1	5.0	3	26	5.2	14.5	4.4	73	3.0	5.0	3.1	6	33	3.5	6.1	5.0	
				8	29	5.8	5.8	19	8.1	6.7	4	14	6.9	19.3	5.8	41	4.0	6.7	4.1	8	19	4.6	8.1	6.7	
				10	19	7.3	7.3	12	10.2	8.4	5	9	8.7	24.1	7.3	26	5.0	8.4	5.1	10	12	5.8	10.2	8.4	
FL	40°	6000	1700	4	116	2.9	2.9	75	4.1	3.4	2	58	3.5	9.6	2.9	164	2.0	3.4	2.1	4	75	2.3	4.1	3.4	
				6	51	4.4	4.4	33	6.1	5.0	3	26	5.2	14.5	4.4	73	3.0	5.0	3.1	6	33	3.5	6.1	5.0	
				8	29	5.8	5.8	19	8.1	6.7	4	14	6.9	19.3	5.8	41	4.0	6.7	4.1	8	19	4.6	8.1	6.7	
				10	19	7.3	7.3	12	10.2	8.4	5	9	8.7	24.1	7.3	26	5.0	8.4	5.1	10	12	5.8	10.2	8.4	
FL	40°	6000	1700	4	116	2.9	2.9	75	4.1	3.4	2	58	3.5	9.6	2.9	164	2.0	3.4	2.1	4	75	2.3	4.1	3.4	
				6	51	4.4	4.4	33	6.1	5.0	3	26	5.2	14.5	4.4	73	3.0	5.0	3.1	6	33	3.5	6.1	5.0	
				8	29	5.8	5.8	19	8.1	6.7	4	14	6.9	19.3	5.8	41	4.0	6.7	4.1	8	19	4.6	8.1	6.7	
				10	19	7.3	7.3	12	10.2	8.4	5	9	8.7	24.1	7.3	26	5.0	8.4	5.1	10	12	5.8	10.2	8.4	
FL	40°	6000	1700	4	116	2.9	2.9	75	4.1	3.4	2	58	3.5	9.6	2.9	164	2.0	3.4	2.1	4	75	2.3	4.1	3.4	
				6	51	4.4	4.4	33	6.1	5.0	3	26	5.2	14.5	4.4	73	3.0	5.0	3.1	6	33	3.5	6.1	5.0	
				8	29	5.8	5.8	19	8.1	6.7	4	14	6.9	19.3	5.8	41	4.0	6.7	4.1	8	19	4.6	8.1	6.7	
				10	19	7.3	7.3	12	10.2	8.4	5	9	8.7	24.1	7.3	26	5.0	8.4	5.1	10	12	5.8	10.2	8.4	
FL	40°	6000	1700	4	116	2.9	2.9	75	4.1	3.4	2	58	3.5	9.6	2.9	164	2.0	3.4	2.1	4	75	2.3	4.1	3.4	
				6	51	4.4	4.4	33	6.1	5.0	3	26	5.2	14.5	4.4	73	3.0	5.0	3.1	6	33	3.5	6.1	5.0	
				8	29	5.8	5.8	19	8.1	6.7	4	14	6.9	19.3	5.8	41	4.0	6.7	4.1	8	19	4.6	8.1	6.7	
				10	19	7.3	7.3	12	10.2	8.4	5	9	8.7	24.1	7.3	26	5.0	8.4	5.1	10	12	5.8	10.2	8.4	

The beam spread in degrees and the beam "L" and "W" in the following tables are computed at 50% of centerbeam candlepower and represent areas of "effective illumination."

**Due to steep aiming angle, length of beam extends beyond 25'.