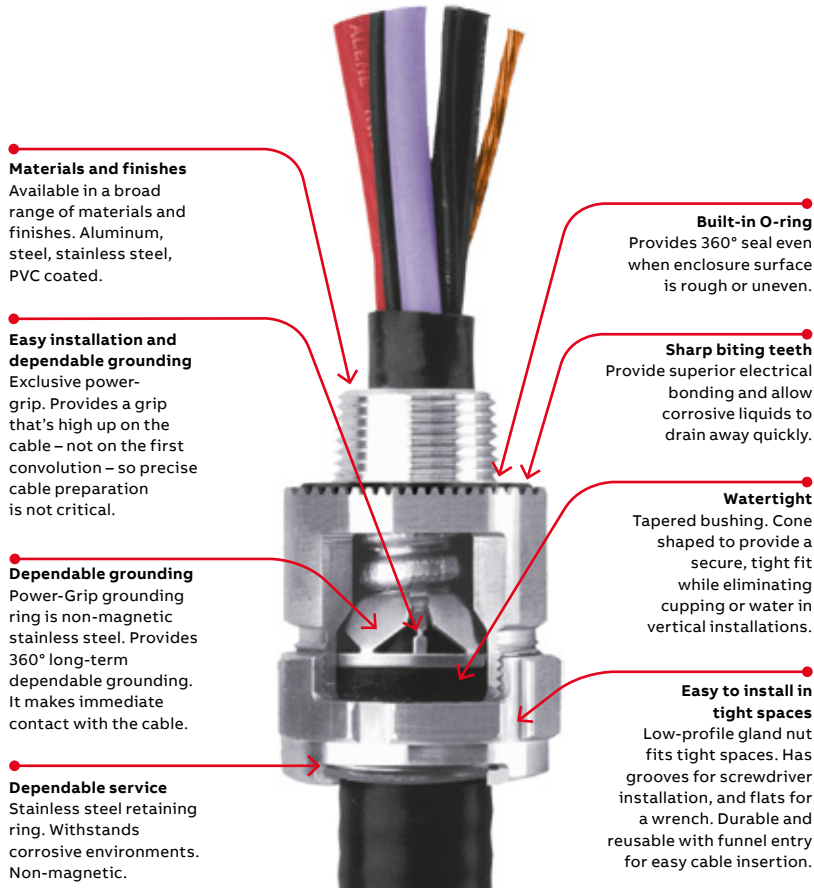


## Star Teck (ST) series fittings for Teck and ACWU cable

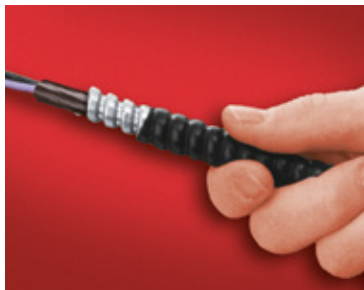


### Suggested specifications for metal-clad cable or Teck cable fittings in hazardous locations:

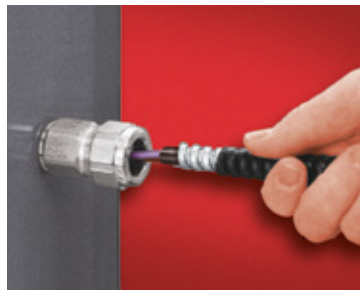
- All metal-clad cable fittings for jacketed and non-jacketed interlocked armour cable, continuous corrugated cable or Teck cable shall be approved by a nationally recognized testing laboratory, inspection agency or product evaluation organization.
- Where corrugated-jacketed, metal-clad cable exposed to intermittent or continuous moisture is terminated into a threaded opening, the fitting shall be watertight type furnished with:
  - an elastomeric beveled bushing.
  - a funnel entry, splined gland nut.
  - a non-magnetic, stainless steel grounding device with dual grounding action.
  - a taper threaded hub.
  - a hexagonal body and gland nut as manufactured by ABB (aluminum series ST050-464).
  - a built in sealing O-ring on hub side.
- With single-conductor cable and/or in corrosive environments, aluminum fittings such as ABB series ST050-464 shall be installed. Where explosion-proof or dust-ignition-proof boxes are required by the code, Star Teck fittings must be used in conjunction with an approved sealing fitting.

### Easy installation

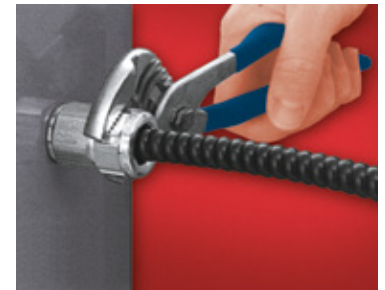
- 01 Prepare cable
- 02 Insert cable
- 03 Tighten gland nut



01



02



03

### Warning:

Always ensure that the system is de-energized before performing any installation.

## Star Teck (ST) series fittings for Teck and ACWU cable

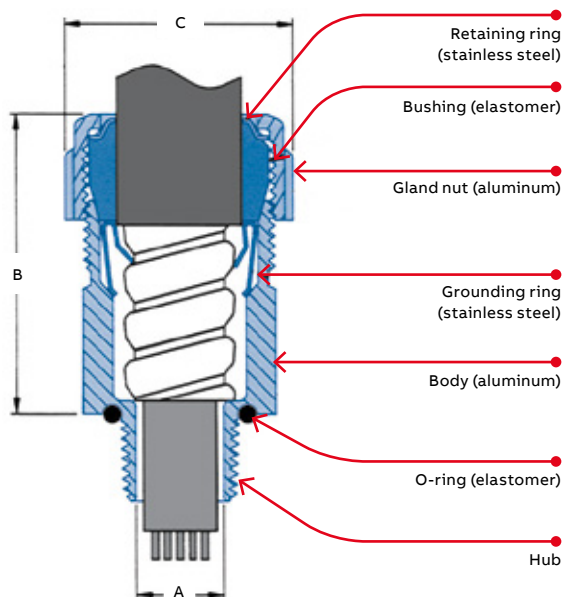


**01 Star Teck (ST series)**  
Star Teck cable fittings are designed to accommodate a broad range of cables, thereby minimizing the possibility of mismatched cables and fittings in the field. They are available in hub sizes from ½ to 4 inches, and will handle outer jacket diameters from 0.525 to 4.340 inches.

Cat. no.	Hub size (in.)	Range over jacket (in.)		Dimensions (in.)		
		min.	max.	A	B*	C
ST038-461S†	¾	0.344	0.535	0.344	2.020	0.995
ST050-462	½	0.525	0.650	0.390	2.020	1.224
ST050-464	½	0.600	0.760	0.480	2.020	1.363
ST050-465	½	0.725	0.885	0.607	2.133	1.633
ST050-466	½	0.825	0.985	0.607	2.133	1.633
ST075-467	¾	0.880	1.065	0.809	2.450	2.080
ST075-468	¾	1.025	1.205	0.809	2.450	2.080
ST100-469	1	1.187	1.375	1.034	2.601	2.230
ST125-470	1¼	1.350	1.625	1.177	3.282	2.824
ST125-550	1¼	1.500	1.625	1.365	3.282	2.824
ST125-471	1¼	1.600	1.875	1.365	3.282	2.824
ST150-472	1½	1.700	1.965	1.552	3.620	3.260
ST150-473	1½	1.900	2.187	1.595	3.620	3.260
ST200-551	2	1.900	2.187	1.710	3.640	3.620
ST200-474	2	2.100	2.375	1.990	3.640	3.620
ST200-475	2	2.300	2.565	2.052	3.640	4.020
ST200-476	2	2.500	2.750	2.052	3.640	4.020
ST250-477	2½	2.380	2.640	2.255	4.700	4.750
ST250-478	2½	2.580	2.840	2.455	4.700	4.750
ST300-479	3	2.790	3.060	2.655	4.700	5.050
ST300-480	3	3.000	3.270	2.885	4.790	5.480
ST300-481	3	3.210	3.480	3.057	4.790	5.480
ST350-482	3½	3.420	3.690	3.285	4.790	5.980
ST350-483	3½	3.610	3.870	3.455	4.790	5.980
ST400-484	4	3.810	4.030	3.625	4.840	6.435
ST400-485	4	3.965	4.185	3.770	4.840	6.435
ST400-486	4	4.120	4.340	3.935	4.840	6.435

\* Approximate dimension before installation

† Only available in steel



### Materials

- **Aluminum:** The catalogue numbers listed at left relate to aluminum fittings. The body and gland nut on hub sizes ½ to 1 inch are machined from copper-free bar stock and 1¼ to 4 inches are made of cast copper-free aluminum.
- **Steel:** To order a steel or malleable iron fitting, add the suffix “S” to the catalogue number (example ST050-464S). The body and gland nut on hub sizes ½ to 1 inch are made of steel and 1¼ to 4 inches are made of malleable iron. Plating is electro-deposited zinc.
- **Stainless steel:** To order a 316 stainless steel fitting, add the suffix “SS” to the catalogue number (example ST050-464SS). Only available for ½ to 2 inch hub sizes.
- **PVC-coated aluminum and steel:** To order, add the suffix “PVC” to the catalogue number (example ST050-464PVC or ST050-464SPVC).

Note - When using fittings on single-conductor cable, aluminum fittings and aluminum locknuts must be used.

### Certifications

- **Type HLA.** CSA Certified Class II, Divisions 1 and 2, Groups E, F, and G; Class III and Enclosure Type 4, Type 4X, Classes I, II and III. Suitable for Class I Division 1 locations when used in combination with a certified Class I sealing fitting. Also suitable for Class I Division 2 when installed in accordance with the applicable electrical code.
- **Complies with IEC requirements for Class I, Zones 1 and 2, when used in combination with a certified Class I hazardous location sealing fitting.**
- **UL Listed Class I, Division 2; Class II, Division 2 and Class III.** Meets sealing requirements for type 4 enclosures. PVC-coated fittings are only approved for ordinary location areas (OLA).