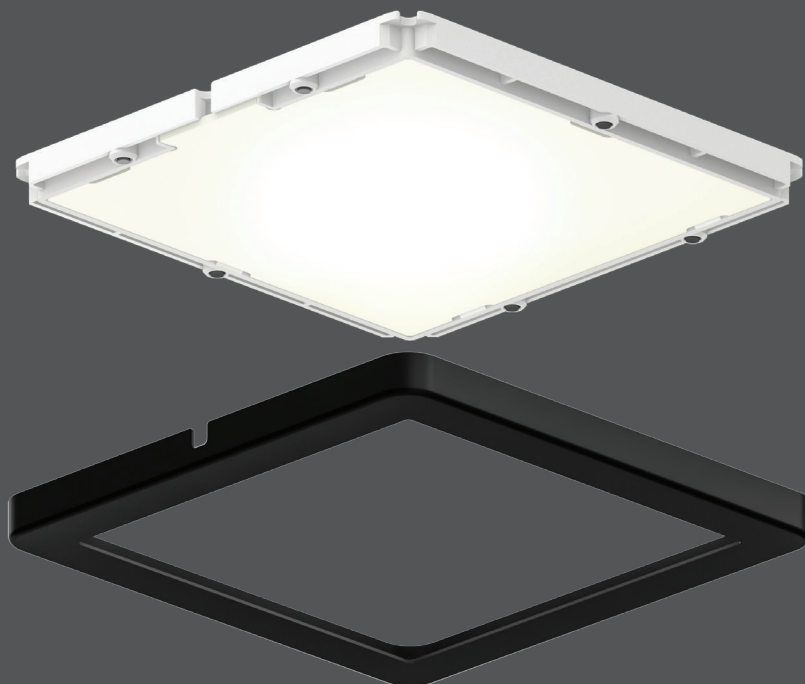

Ultra-slim puck

Thanks to its tiny profile of just ¼" in height, our ultra-slim LED pucks can be invisibly integrated onto any surface. Available as a single unit or as a kit of three.

JA8
CERTIFIED

INDOOR

ETL
Intertek



| Model | Size | Watts | Delivered lumens | LED lumens | CRI | Color °T | Voltage |
|----------------|-------------|--------|------------------|------------|-----|----------|---------|
| 4006 | Ø3.875" | 3.6 W | 250 lm | 300 lm | 90 | 3000 K | 12 V |
| 4006SQ | 3.875" | 3.6 W | 250 lm | 300 lm | 90 | 3000 K | 12 V |
| K4006 | 3 x Ø3.875" | 3.6 W* | 250 lm* | 300 lm* | 90 | 3000 K | 12 V |
| K4006SQ | 3 x 3.875" | 3.6 W* | 250 lm* | 300 lm* | 90 | 3000 K | 12 V |

*Per fixture

Specifications

12V DC LED driver required (4006/4006SQ)
 Over 50,000 hours of service life
 12" input lead with quick connector
 24" interconnection harness included
 Warm white light output
 Superior LED performance and lifespan
 Smooth 360° wide spread
 Minimal heat emission
 Heat sink and thermal protection
 JA8 Certified
 Dimmable with most low-voltage electronic dimmers when used with DALI dimming power supply

*Note:

Plug-in or hard-wired power supply required for installation when purchasing the single unit (4006). Sold separately.

Finish

BK Black
SN Satin nickel
WH White

Power supplies: plug-in

ETR-LED10WPI
 12VDC/10W class 2 LED driver
ETR-LED24WPI
 12VDC/24W class 2 LED driver

Power supplies: hard-wired

BT06DIMLED-IC
 6W dimmable LED hardwire driver
BT12DIMLED-IC
 12W dimmable LED hardwire driver
BT24DIMLED-IC
 24W dimmable LED hardwire driver
BT36DIMLED
 36W dimmable LED hardwire driver
BT48DIMLED
 48W dimmable LED hardwire driver

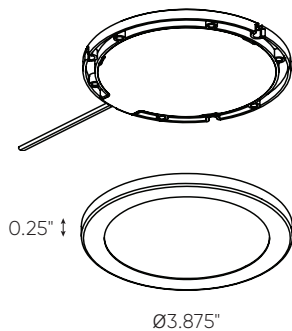
Accessories

4000E-24
 24" extension cord
4000E-60
 60" extension cord
4000HRNS-24
 24" interconnection harness

Order example

4006-SN
 4006 round single puck with 250 lumens at 3000K in a satin nickel finish

4006



4006SQ

