

Tmax T ranges

T5-T6 Accessories

Mechanical lug kits, covers and phase seperators



FC CuAl kits (for copper or aluminium cables)

| Type | T5 | | T6 | |
|---|-------------------|-------------------|-------------------|-------------------|
| | 3p Part number | 4p Part number | 3p Part number | 4p Part number |
| 1x 250 Kcmil up to 500 Kcmil (300A rated) | KT5300-3 | KT5300-4 | – | – |
| 2x 3/0 up to 2x 250 Kcmil (400A rated) ⁽¹⁾ | KT5400-3 | KT5400-4 | – | – |
| 2x 3/0 up to 2x 500 Kcmil (600A rated) | KT5600-3 | KT5600-4 | – | – |
| 2x 250 Kcmil up to 2x 500 Kcmil (600A rated) | – | – | KT6600-3 | KT6600-4 |
| 3x 2/0 up to 3x 400 Kcmil (800A rated) ⁽¹⁾ | – | – | KT6800-3 | KT6800-4 |

⁽¹⁾ Comes with high profile terminal covers

4



EF front extended terminals (for bus bars)

| Type | T5 | | T6 | |
|------------|-------------------|-------------------|-------------------|-------------------|
| | 3p Part number | 4p Part number | 3p Part number | 4p Part number |
| 400A rated | KT5EF-3 | KT5EF-4 | – | – |
| 800A rated | – | – | KT6EF-3 | KT6EF-4 |



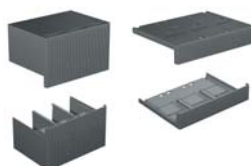
Rear terminals (for bus bars)

| Type | T5 | | T6 | |
|------------|-------------------|-------------------|-------------------|-------------------|
| | 3p Part number | 4p Part number | 3p Part number | 4p Part number |
| 400A rated | KT5R-3 | KT5R-4 | – | – |
| 800A rated | – | – | KT6R-3 | KT6R-4 |



Lug adaptor spare kit

| Type | T5 | | T6 | |
|--------------------|-------------------|-------------------|-------------------|-------------------|
| | 3p Part number | 4p Part number | 3p Part number | 4p Part number |
| 6 plugs and screws | KT5FC-6 | – | KT6FC-6 | – |



Terminal shroud covers

| Type | T5 | | T6 | |
|--------------|-------------------|-------------------|-------------------|-------------------|
| | 3p Part number | 4p Part number | 3p Part number | 4p Part number |
| High profile | KT5HTC-3 | KT5HTC-4 | KT6HTC-3 | KT6HTC-4 |
| Low profile | KT5LTC-3 | KT5LTC-4 | KT6LTC-3 | KT6LTC-4 |



Phase seperators

| Type | T5 | | T6 | |
|--------------|-------------------|-------------------|-------------------|-------------------|
| | 3p Part number | 4p Part number | 3p Part number | 4p Part number |
| High profile | KT5PBH-3 | KT5PBH-4 | – | – |
| Low profile | KT5PBL-3 | KT5PBL-4 | KT6PBL-3 | KT6PBL-4 |