



Power Modules

The RSTi provides various power modules to reduce wiring and simplify installation. Modules that support Smart Module ID will require one of the addresses on the bus.

The ST-7241 and ST-7641 enable multiple voltages to be supported on the RSTi bus such as 120 VAC. All modules to the right of the module will be based on the supply voltage of the ST-7x41.

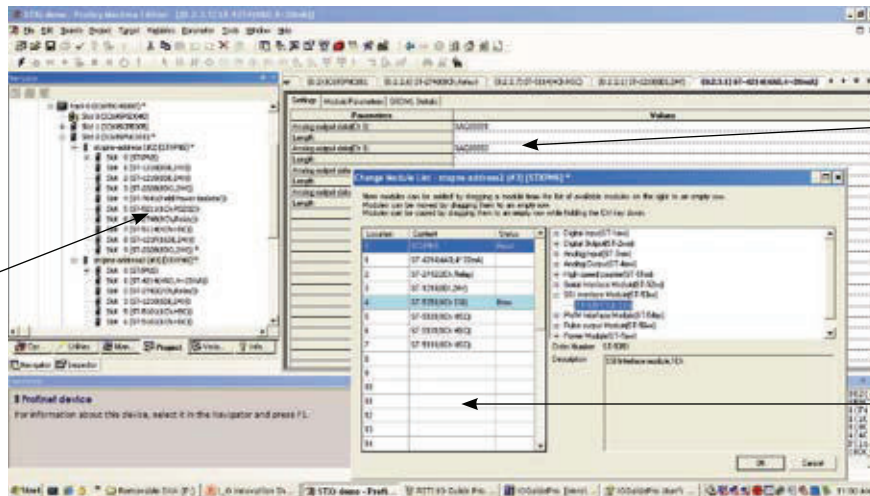
The ST-7111 and ST-7511 boost the 5 VDC on the backplane bus when module power requirement is exceeded. The ST-7x11 supplies 1.0 Amps of 5 VDC to the modules to the right of the ST-7x11.

	ST-7111	ST-7511	ST-7241	ST-7641
Product Name	Bus Expansion Power Supply (Input 24 VDC, Output 1.0 Amp/5 VDC)	Bus Expansion Smart Power Supply (Input 24 VDC, Output 1.0 Amp/5 VDC)	Power Distribution (5 VDC, 24 VDC, 48 VDC, 110 VAC, 220 VAC)	Power Distribution Smart Module (5 VDC, 24 VDC, 48 VDC, 110 VAC, 220 VAC)
Lifecycle Status	Active	Active	Active	Active
Module Type	Power Modules	Power Modules	Power Modules	Power Modules
Smart Module (Uses Module ID)	No	Yes	No	Yes
Load Current per Point	Max. 10 Amps	Max. 10 Amps	Max. 10 Amps	Max. 10 Amps
LEDs	Yes	1 Green/Red LED, Module Status	No	1 Green/Red LED, Module Status
Diagnostic Supported	No	No	No	No
Connector Type	Spring Clamp Terminal Block	Spring Clamp Terminal Block	Spring Clamp Terminal Block	Spring Clamp Terminal Block
Internal Power Used (5 VDC loading)	1.0 Amp 5 VDC booster	Max. 14 mA @ 24 VDC	None	Max. 18 mA @ 5 VDC
Dimensions (H x W x D) in mm	99 x 12 x 70	99 x 12 x 70	99 x 12 x 70	99 x 12 x 70

Powerful Configuration Tools

The RSTi is tightly integrated with the GE Intelligent Platforms Proficy Machine Edition. The user can easily select an I/O module and configure parameters. The configuration is stored in the folder and once download to the controller it is automatically loaded to the RSTi with a single point of connect.

RSTi modules are part of the controller hardware configuration



Data is easily mapped to reference memory or symbolic

Module pick list with part number and brief description