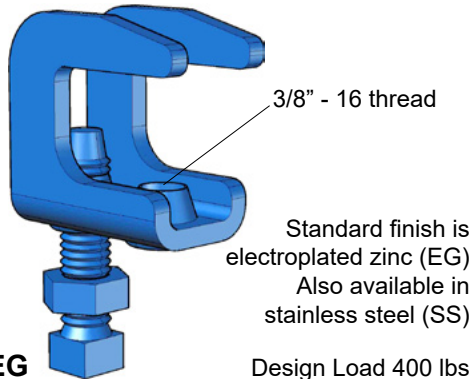


PIPE HANGER: BEAM CLAMPS

NEW

SILVERHAWK TOP BEAM CLAMP



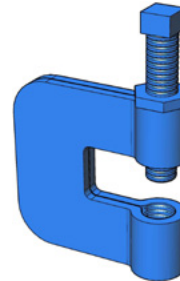
F38TBSH-EG

Design Load 400 lbs

Standard finish is electroplated zinc (EG)
Also available in stainless steel (SS)

NEW

STAMPED "C" CLAMP

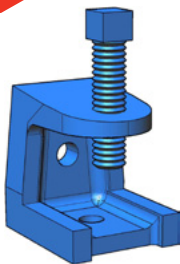


Catalogue No.	Rod Dia. (Inches)	Design Load (Lbs)
S201-3/8	3/8	400
S201-1/2	1/2	500
S201-5/8	5/8	550
S201-3/4	3/4	630
S201-7/8	7/8	700

Carbon steel body, zinc plated is standard. Also available in plain steel finish (P), and stainless steel (SS).

NEW

INSULATOR OR ROD SUPPORT

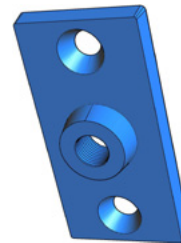


Catalogue No.	Rod Dia. (Inches)	Design Load (Lbs)
SH405TB14M	1/4	335
SH405T516M	5/16	335
SH405TB38M	3/8	525

Maleable iron body (M). Also available in zinc plated (Z) and stainless steel (SS).

NEW

CEILING FLANGE

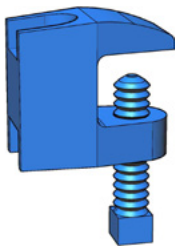


Catalogue No.	Rod Dia. (Inches)	Design Load (Lbs)
SH28C14MZ	1/4	180
SH28C38MZ	3/8	180
SH28C12MZ	1/2	180

Carbon steel body, zinc plated (MZ). Also available in black finish (M), and stainless steel (SS).

NEW

SMALL MOUTH TOP BEAM CLAMP

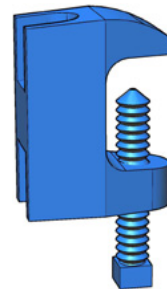


Catalogue No.	Rod Dia. (Inches)	Design Load (Lbs)
SH406TB38M	3/8	350
SH406TB12M	1/2	470
SH406TB58M	5/8	550
SH406TB34M	3/4	700
SH406TB78M	7/8	1000

Maleable iron body (M). Also available in zinc plated (Z) and stainless steel (SS).

NEW

WIDE MOUTH TOP BEAM CLAMP

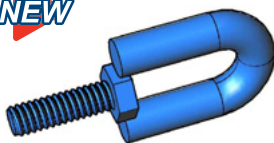


Catalogue No.	Rod Dia. (Inches)	Design Load (Lbs)
SH407TB38M	3/8	400
SH407TB12M	1/2	500
SH407TB58M	5/8	850
SH407TB34M	3/4	850

Maleable iron body (M). Also available in zinc plated (Z).

SWIVELS

NEW



Male, 1" stud

Catalogue No.	Thread
S12-1M-EG	1/2" - 13
S38-1M-EG	3/8" - 16

NEW



Female

Catalogue No.	Thread
S12F-EG	1/2" - 13
S38F-EG	3/8" - 16

NEW



Male-Female, 1" stud

Catalogue No.	Thread
S12-1MF-EG	1/2" - 13
S38-1MF-EG	3/8" - 16

NEW



Female-Female

Catalogue No.	Thread
S12FF-EG	1/2" - 13
S38FF-EG	3/8" - 16