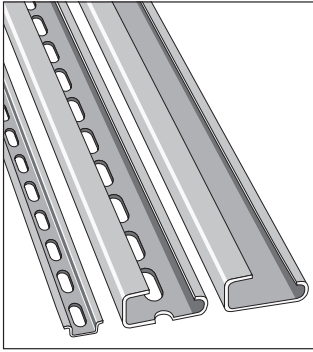


Mounting rails

Asymmetrical - DIN 1

Symmetrical - DIN 2

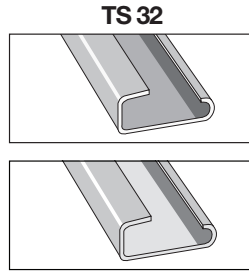


The "Series 5000" terminal blocks snap onto the PR1 asymmetrical DIN 1 rails described here.

The "Series DR" terminal blocks snap onto the PR2 symmetrical DIN 2 rail described here.

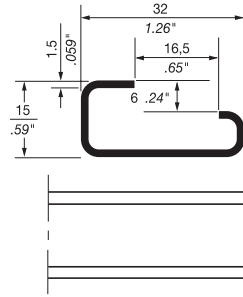
These rails are often used as grounding bars. The current carrying capacity of these rails and the copper wire sizes required to carry that current are given below.

Rail	Material	Current (A)	Wire size AWG	Wire size mm ²
TS 32	Steel	143	2	35
TS 32 ALU	Aluminum	265	000	95
TS 32/F6	Steel	100	4	25
TS 15/F	Steel	35	12	4
TS 15	Steel	47	10	6



TS 32 ALU

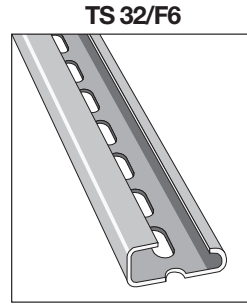
Asymmetrical 32 mm 1.26" G rail in compliance with EN 50035 standard (DIN 46277-1 - NFC 63018) DIN 1



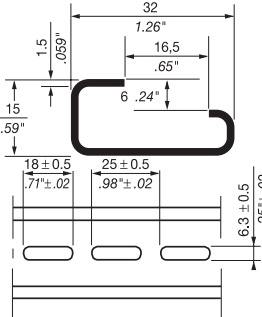
Type P/N

PR1.Z2 (TS 32)
White passivated galvanized steel.
Length 2 m 6'6" (78") approx. **0163 050.04**
Length 1 m 3'3" (39") approx. **0101 596.14**

PR1.A2 (TS 32 ALU)
Aluminum alloy
Length 2 m 6'6" (78") approx. **0167 120.23**
Length 1 m 3'3" (39") approx. **0101 603.07**

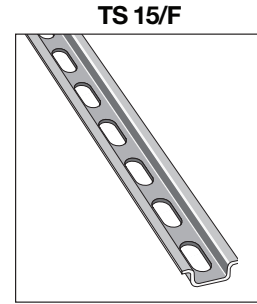


Asymmetrical 32 mm 1.26" G rail in compliance with EN 50035 standard (DIN 46277-1 - NFC 63018) DIN 1

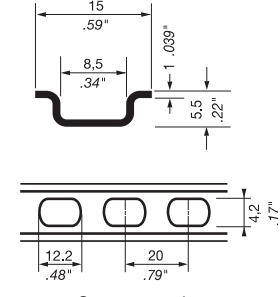


Type P/N

PR1 (TS 32/F6)
Prepunched white passivated galvanized steel.
Length 2 m 6'6" (78") approx. **0101 501.25**
Length 1 m 3'3" (39") approx. **0101 511.16**



Symmetrical rail 15 mm .59" in compliance with EN 50045 standard (DIN 46277.2)



One meter only.

Type P/N

PR2 (TS 15/F) **0101 673.00**
Prepunched white passivated galvanized steel.
Length 1 m 3'3" (39") approx.

PR2 (TS 15) **0101 674.01**
Zinc bichromate plated steel.
Not prepunched.
Length 1 m 3'3" (39") approx.

Rail tolerances

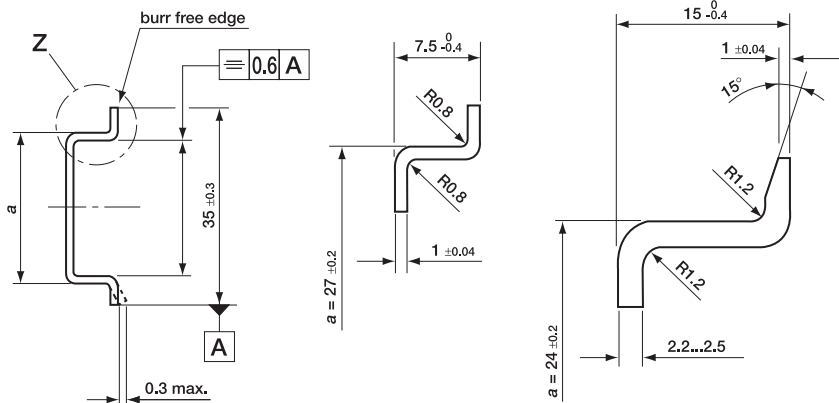
Symmetrical - DIN 3

Rail length: supplied in lengths of 1 or 2 meters or in custom cut lengths. Allow 3 mm for the rail cutting blade thickness.

Shown for DIN rails 35 mm wide and either 7.5 mm or 15 mm high. For other rail tolerances, contact Entelec.

Dimensions apply over the whole length of the DIN rail, but shall not be verified anywhere less than 10 mm from the ends.

All dimensions in millimeters.



Asymmetrical - DIN 1

Rail length: supplied in lengths of 1 or 2 meters or in custom cut lengths. Allow 3 mm for the rail cutting blade thickness.

Shown for DIN 1 rails 32 mm wide and 15 mm high.

Dimensions apply over the whole length of the DIN rail, but shall not be verified anywhere less than 10 mm from the ends.

All dimensions in millimeters.

