

Features

- Allows for the quick creation, installation, and adjustment of multi-level trapeze assemblies
- Installs in strut profiles without the need to insert fingers or tools into the strut
- Easy “push-to-install” design allows installers to simply push the threaded rod through the mounting hole, instantly holding it in position
- Integrated adjustment nut enables fine tuning the system height up or down
- Lock nut can be finger tightened, locking the rod in place
- Accommodates slight variances in rod-to-rod position of the trapeze
- Can be used to prefabricate assemblies which can be quickly pushed onto previously installed threaded rods
- Works with slightly damaged threads and minor burrs on the threaded rod



CADDY ROD LOCK Supports are specialty solutions designed to be installed as a part of prefabricated assemblies that can then be pushed onto pre-hung threaded rods.

The most unique feature of the system is its breakthrough “push-to-install” design, which dramatically reduces the installation time of threaded rod support structures when compared to conventional fasteners. Simply speaking – CADDY ROD LOCK is revolutionizing how contractors support conduit, cable tray, lights, ductwork and pipe by helping to make installations faster, easier and more secure.

Simple solution for multi-tiered trapeze installations with integrated adjustment nut. Designed for open-side-up strut configurations.”

Part Number	Strut Type	Rod Size RS	A	B	C	Wrench Size 1	Wrench Size 2
CRLSL37EG	A (1 5/8" x 1 5/8")	3/8"	1.19"	3.23"	9/16"	15/16"	14 mm

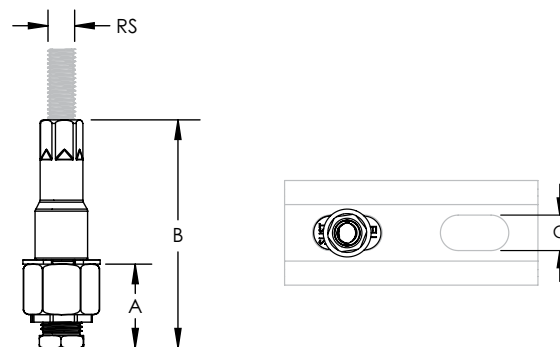
Material: Steel

Finish: Electrogalvanized

Wrench Size 1 represents CADDY ROD LOCK hex nut size. Wrench Size 2 represents stem nut size.

Must be installed with the open side of the strut channel facing up.

CADDY ROD LOCK Strut Nuts must be installed at a minimum of 1" (25.4 mm) from both ends of the strut channel.



WARNING

Pentair products shall be installed and used only as indicated in Pentair's product instruction sheets and training materials. Instruction sheets are available at www.eric.pentair.com and from your Pentair customer service representative. Improper installation, misuse, misapplication or other failure to completely follow Pentair's instructions and warnings may cause product malfunction, property damage, serious bodily injury and/or death, and void your warranty.

© 2016, 2017 Pentair All Rights Reserved

Pentair, CADDY, CADWELD, CRITEC, ERICO, ERIFLEX, ERITECH and LENTON are owned by Pentair or its global affiliates. All other trademarks are the property of their respective owners. Pentair reserves the right to change specifications without prior notice.

