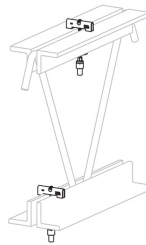
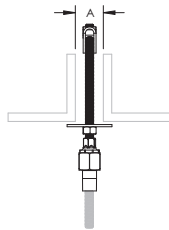
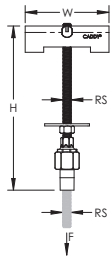


# CADDY ROD LOCK Bar Joist Hanger – CRLJ37EG



- Easily installs from underneath the bar joist
- Easily installs on lower or upper truss chord of the bar joist
- Plastic protection cap prevents dirt or structural coatings from obstructing the “push-to-install” mechanism
- Prefabricated assemblies easily lift and lock into place, helping to save time and money
- Easy “push-to-install” design allows installers to simply push the threaded rod through the mounting hole, instantly holding it in position
- Works with slightly damaged threads and minor burrs on the threaded rod



Part Number	CRLJ37EG
Material	Steel
Finish	Electrogalvanized
Static Load Safety Factor	3.5:1
Rod Size (RS)	3/8"
Height (H)	7.4"
Width (W)	3.7"
A	5/8" – 1 1/4"
Wrench Size 1	9/16"
Wrench Size 2	15/16"
Static Load (F)	1,000 lb
Standard Packaging Quantity	25 pc
UPC	78285686428

Wrench Size 1 represents hex nut size used to tighten to bar joist. Wrench Size 2 represents CADDY ROD LOCK hex nut size.

## WARNING

Pentair products shall be installed and used only as indicated in Pentair's product instruction sheets and training materials. Instruction sheets are available at [erico.pentair.com](http://erico.pentair.com) and from your Pentair customer service representative. Improper installation, misuse, misapplication or other failure to completely follow Pentair's instructions and warnings may cause product malfunction, property damage, serious bodily injury and death and/or void your warranty.

© 2017 Pentair All rights reserved

Pentair, CADDY, CADWELD, CRITEC, ERICO, ERIFLEX, ERITECH and LENTON are owned by Pentair or its global affiliates.

All other trademarks are the property of their respective owners. Pentair reserves the right to change specifications without prior notice.

