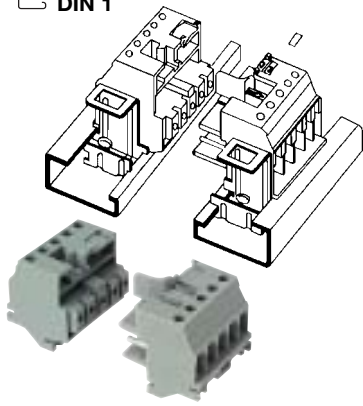


Connectors

DIN 1



- Pin DIA. 2 mm with patented flexible contact
- Key element device
- Locking in plugged position
- Double adjustment on rail

Wire size

Conductors	H07 V-R
CENELEC	H07 V-K
Wire strip. length - Recom. screwdriver	7 mm - DIA. 4

Electrical characteristics

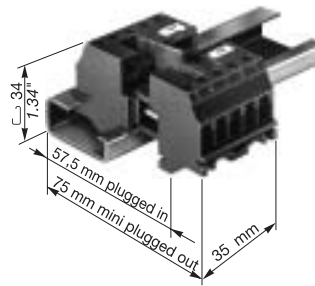
UTE - NFC 20040 Cat. C - NFC 63065	500	30	4
VDE - 0110 Group C - 0100 Group 2	500 600	27	4
CSA - 22-2 N° 14	300	25	12 AWG

Approvals

Accessories

1 Rail \hookrightarrow 32 x 15 x 1,5	PR1Z2	0163 050.04
2 End stop	BAE th. 10 mm	0163 087.16
Positive locking (1 per full connector)		
Loose mounting (1 per plug or socket)		
Double mounting (1 per mounted assembly)		
Straight short model cable clamp for flat cable (1 per plug or socket)		
Straight long model cable clamp for flat cable (1 per plug or socket)		
Straight long model cable clamp for round cable (1 per plug or socket)		
Bent cable clamp for flat cable (1 per plug or socket)		
Bent cable clamp for round cable (1 per plug or socket)		
Coding pin (flat mount, 1 per full connector)		
Coding pin (base mount, 1 per full connector)		
R Marking method		

CF 4/5



Slides on PR1 DIN rail

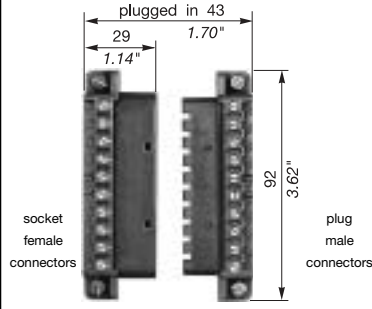
5 circuits with screw clamp connection

Grey **CF 4/5** **0115 028.12**
Female part only

Grey **CF 4/5** **0115 029.13**
Male part only

screw clamp mm²	0,5 - 4
Wire strip. length - Recom. screwdriver	7 mm - DIA. 4

CF 4/10



delivered with fixing screw CM4/12 + nuts.

10 circuits with screw clamp connection

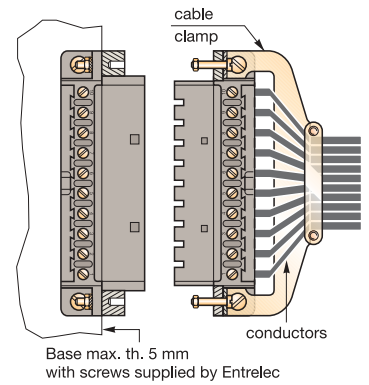
Grey **CF 4/10** **0115 050.24**
Socket (female connectors)

Grey **CF 4/10** **0115 051.11**
Plug (male connectors)

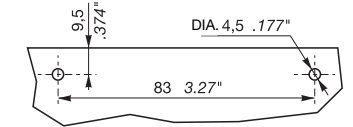
screw clamp mm²	0,5 - 4
Wire strip. length - Recom. screwdriver	7 mm DIA. 4

Mounting

Flat view

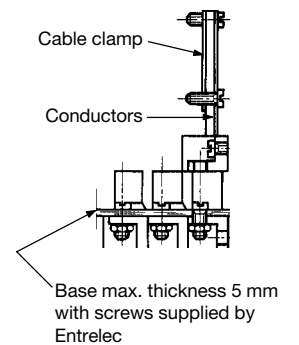


DRILLING

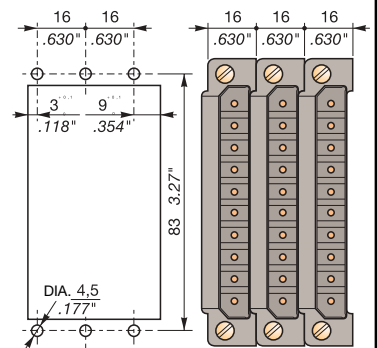


Cross

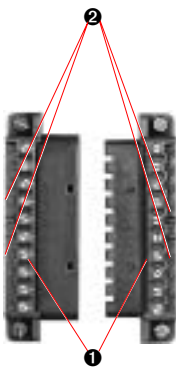
JUXTAPOSABLE



DRILLING



Marking



1 Plugs and sockets have moulded premarking.

2 REH2

REH2 Stickers 5 x 3,5 mm

Card of 1140 precut stickers

✓ Blank

REH2 **0163 142.21**

✓ Printed

8 séries de 001 à 140

REH2 **0163 143.22**

✓ Printed

8 series from 141 to 280

REH2 **0163 148.07**

Card of 300 precut stickers

✓ Printed

30 series from 001 to 010

REH2 **0164 505.27**

✓ Printed

15 series from 001 to 020

REH2 **0164 506.20**

Card of 502 precut stickers

✓ Printed

6 series from 001 to 075
+ 2 series from A to Z

REH2 **0164 507.21**

Card of 1140 precut stickers

✓ Printed

285 series A, B, C, D

REH2 **0173 934.15**

Marking method 2