



# 2014 Mini Catalog

Flexilight™ - the Culture of Rope Light



**Wide Loyal Development Limited**

Suite 160 - 13160 Vanier Place  
Richmond BC, V6V 2J2, Canada

Tel: 1-888-303-0931

Fax: 1-888-303-0932

[www.wideloyal.com](http://www.wideloyal.com)

## Wide Loyal - Your Confident Choice

---

- The only rope light manufacturer awarded the honor of China Top Brand by the Chinese government
- The first ISO 9000 certified rope light manufacturer with 100% quality control of every part of the products
- Proud supplier of Sydney Olympic Games 2000, Beijing Olympic Games 2008 and other significant events all over the world
- Setting trends and leading technologies in the industry since 1980's

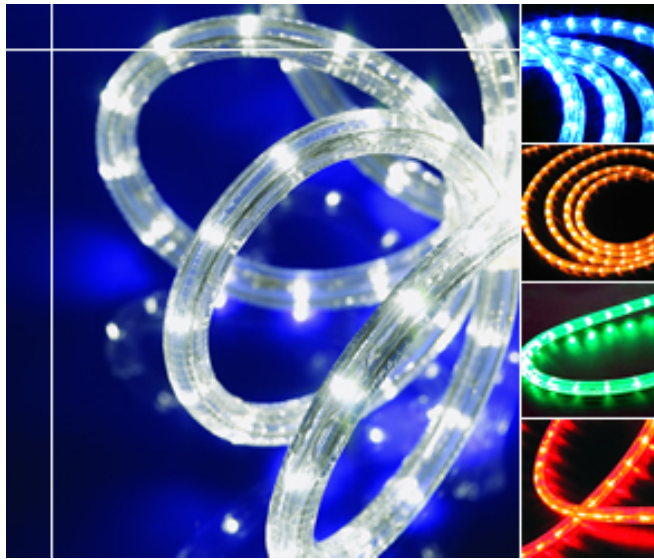
## Flexilight - Your Brilliant Choice

---

- The brightest rope light in the world - up to 40% brighter than the next leading brand on the market
- Widest range of rope lighting products - over 20 models in both LED and incandescent versions, 25 PVC tube colors, 9 LED bulb colors and 7 filament bulb colors
- Meeting safety standards on almost every continent of the world: UL, CSA, SAA, JET, LCIE, etc.



## LED Instant Flexilight - the most popular rope light



### Long-lasting

Up to 100,000 hours

### Energy-saving

Less than 1 watt per foot

### Durable

LED instead of fragile bulbs

### Ultra-bright

Up to 80 lumens per foot

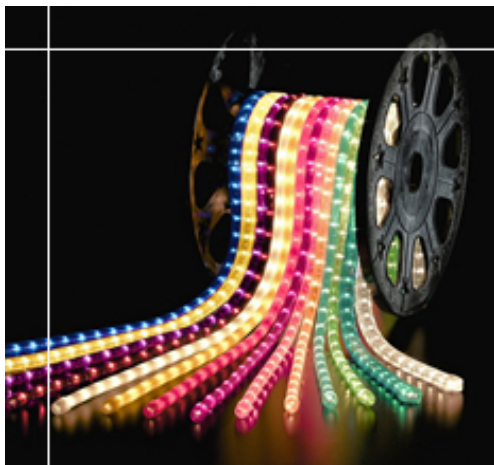
| Shape | Thickness     | Bulb Spacing | No. of Wires | Colors Available  |
|-------|---------------|--------------|--------------|-------------------|
| Round | 1/2" Diameter | 1"           | 2            | 9 LED Bulb Colors |

| Voltage                       | 12V  | 24V  | 110V/120V   | 220V/240V   |
|-------------------------------|--|--|---|---|
| Wattage                       | 0.80W/Foot<br>White/Blue/True Green<br><br>0.53W/Foot<br>Red/Yellow/Orange | 0.80W/Foot<br>White/Blue/True Green<br><br>0.53W/Foot<br>Red/Yellow/Orange | 0.8W/Foot<br>White/Blue/True Green<br><br>0.53W/Foot<br>Red/Yellow/Orange | 0.8W/Foot<br>White/Blue/True Green<br><br>0.53W/Foot<br>Red/Yellow/Orange |
| Max Run<br>(on 8A rectifier)  | 75'<br>White/Blue/True Green<br><br>100'<br>Red/Yellow/Orange              | 150'<br>White/Blue/True Green<br><br>200'<br>Red/Yellow/Orange             | 600'<br>White/Blue/True Green<br><br>900'<br>Red/Yellow/Orange            | 1200'<br>White/Blue/True Green<br><br>1800'<br>Red/Yellow/Orange          |
| Unit Length                   | 3"   | 6"   | 39"   | 78"   |
| Part Number<br>(Package Size) | IFLC-25 (45M/150')   | IFLC-45 (45M/150')   | IFLC-15 (45M/150')  | IFLC-35 (45M/150')  |

LED Instant Flexilight is the most popular rope light using next-generation LED technologies. It's the easiest way to provide a long-lasting and cost-effective lighting solution. Available in both vertical and horizontal bulb insertion versions, LED Instant Flexilight suits every application of yours, whatever your taste or mood is.

\*\*\* Almost all our traditional incandescent Flexilight models can be made with LED. Please call us for more details on all the varieties of LED Flexilight.

## Instant Flexilight - the classic and the standard of rope light



| Shape | Thickness     | Bulb Spacing | No. of Wires | Colors   |
|-------|---------------|--------------|--------------|----------|
| Round | 1/2" Diameter | 1"           | 2            | 10+ Tube |

| Voltage                 | 12V  | 24V  | 120V   | 220V                           |
|-------------------------|--|--|--|--------------------------------|
| Wattage                 | 2.1W/Foot  | 2.1W/Foot  | 2.1W/Foot                                      | 2.1W/Foot                      |
| Max Run                 | 30'  | 60'  | 300'   | 600'                           |
| Unit Length             | 4"   | 8"   | 3'   | 6'                             |
| Part No. (Package Size) | IF-76 (300')<br>IF-78 (150'x2)<br>IF-72 (200')<br>IF-75 (150') | IF-86 (300')<br>IF-88 (150'x2)<br>IF-82 (200')<br>IF-85 (150') | IF-66 (300')<br>IF-68 (150'x2)<br>IF-65 (150') | IF-98 (150'x2)<br>IF-95 (150') |

## Mini Flexilight - the thinnest and the most flexible rope light



| Shape | Thickness     | Bulb Spacing | No. of Wires | Colors   |
|-------|---------------|--------------|--------------|----------|
| Round | 3/8" Diameter | 1"           | 2            | 10+ Tube |

| Voltage                 | 12V  | 24V  | 120V   | 220V                           |
|-------------------------|--|--|--|--------------------------------|
| Wattage                 | 2.1W/Foot  | 2.1W/Foot  | 2.1W/Foot                                      | 2.1W/Foot                      |
| Max Run                 | 30'  | 60'  | 300'   | 600'                           |
| Unit Length             | 4"   | 8"   | 3'   | 6'                             |
| Part No. (Package Size) | MF-76 (300')<br>MF-78 (150'x2)<br>MF-72 (200')<br>MF-75 (150') | MF-86 (300')<br>MF-88 (150'x2)<br>MF-82 (200')<br>MF-85 (150') | MF-66 (300')<br>MF-68 (150'x2)<br>MF-65 (150') | MF-98 (150'x2)<br>MF-95 (150') |

## Chasing Flexilight - the most affordable way to create a dynamic lighting effect



| Shape | Thickness     | Bulb Spacing | No. of Wires | Colors   |
|-------|---------------|--------------|--------------|----------|
| Round | 1/2" Diameter | 1"           | 3            | 10+ Tube |

| Voltage                 | 12V          | 24V          | 120V                           | - |
|-------------------------|--------------|--------------|--------------------------------|---|
| Wattage                 | 2.1W/Foot    | 2.1W/Foot    | 2.1W/Foot                      | - |
| Max Run                 | 30'          | 60'          | 300'                           | - |
| Unit Length             | 8"           | 16"          | 6'                             | - |
| Part No. (Package Size) | CF-72 (200') | CF-82 (200') | CF-66 (300')<br>CF-68 (150'x2) | - |

\*\*\* Lists of colors and accessories can be found on the last page.



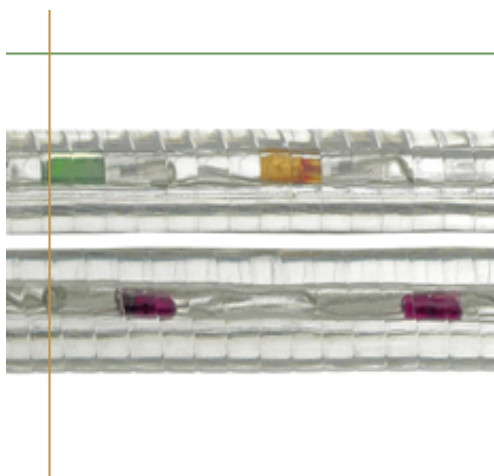
## Bi-Color Chameleon Flexilight - a groovy chic with gradual color changing



| Shape | Thickness     | Bulb Spacing | No. of Wires | Colors                       |
|-------|---------------|--------------|--------------|------------------------------|
| Round | 1/2" Diameter | 1"           | 3            | Your Choice of 2 Bulb Colors |

|                         |     |     |              |   |
|-------------------------|-----|-----|--------------|---|
| Voltage                 | 12V | 24V | 120V         | - |
| Wattage                 | -   | -   | 3W/Foot      | - |
| Max Run                 | -   | -   | 200'         | - |
| Unit Length             | -   | -   | 48"          | - |
| Part No. (Package Size) | -   | -   | BI-62 (200') | - |

## Super-Chasing Flexilight - creating single color or 3-color directional chasing effect



| Shape | Thickness      | Bulb Spacing | No. of Wires | Colors  |
|-------|----------------|--------------|--------------|---|
| Round | 9/16" Diameter | 1"           | 4            | 5 Tube Colors or Your Choice of 3 Bulb Colors |

|                         |     |     |               |   |
|-------------------------|-----|-----|---------------|---|
| Voltage                 | 12V | 24V | 120V          | - |
| Wattage                 | -   | -   | 3W/Foot       | - |
| Max Run                 | -   | -   | 148'          | - |
| Unit Length             | -   | -   | 1.5M / 59"    | - |
| Part No. (Package Size) | -   | -   | CF4-15 (148') | - |

## Multi-Chasing Flexilight - creating single color or 4-color directional chasing effect



| Shape | Thickness     | Bulb Spacing | No. of Wires | Colors                          |
|-------|---------------|--------------|--------------|---------------------------------|
| Round | 5/8" Diameter | 1"           | 5            | Clear or Blue+Green +Red+Yellow |

|                         |     |     |               |   |
|-------------------------|-----|-----|---------------|---|
| Voltage                 | 12V | 24V | 120V          | - |
| Wattage                 | -   | -   | 3W/Foot       | - |
| Max Run                 | -   | -   | 150'          | - |
| Unit Length             | -   | -   | 6'            | - |
| Part No. (Package Size) | -   | -   | CF5-65 (150') | - |

\*\*\* Lists of colors and accessories can be found on the last page.

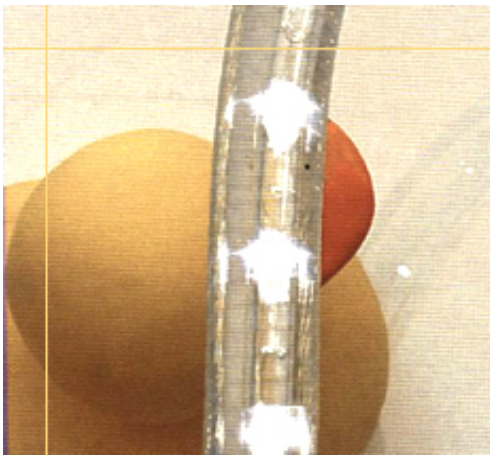
## Super Instant Flexilight - a brighter classic with more light bulbs



| Shape | Thickness     | Bulb Spacing | No. of Wires | Colors        |
|-------|---------------|--------------|--------------|---------------|
| Round | 1/2" Diameter | 0.82"        | 2            | 7 Tube Colors |

|                            |     |     |                                |   |
|----------------------------|-----|-----|--------------------------------|---|
| Voltage                    | 12V | 24V | 120V                           | - |
| Wattage                    | -   | -   | 7.2W/Foot                      | - |
| Max Run                    | -   | -   | 148'                           | - |
| Unit Length                | -   | -   | 14"                            | - |
| Part No.<br>(Package Size) | -   | -   | SP-15 (148')<br>SP-18 (2x148') | - |

## Super-Brite Instant Flexilight - 140% brighter and 25% thicker than Instant Flexilight



| Shape | Thickness     | Bulb Spacing | No. of Wires | Colors         |
|-------|---------------|--------------|--------------|----------------|
| Round | 5/8" Diameter | 1"           | 2            | 10 Tube Colors |

|                            |     |     |              |   |
|----------------------------|-----|-----|--------------|---|
| Voltage                    | 12V | 24V | 120V         | - |
| Wattage                    | -   | -   | 7.2W/Foot    | - |
| Max Run                    | -   | -   | 148'         | - |
| Unit Length                | -   | -   | 19"          | - |
| Part No.<br>(Package Size) | -   | -   | IU-15 (148') | - |

## Super-Brite Chasing Flexilight - 140% brighter and 25% thicker than Chasing Flexilight



| Shape | Thickness     | Bulb Spacing | No. of Wires | Colors         |
|-------|---------------|--------------|--------------|----------------|
| Round | 5/8" Diameter | 1"           | 3            | 10 Tube Colors |

|                            |     |     |              |   |
|----------------------------|-----|-----|--------------|---|
| Voltage                    | 12V | 24V | 120V         | - |
| Wattage                    | -   | -   | 7.2W/Foot    | - |
| Max Run                    | -   | -   | 148'         | - |
| Unit Length                | -   | -   | 39"          | - |
| Part No.<br>(Package Size) | -   | -   | CU-15 (148') | - |

\*\*\* Lists of colors and accessories can be found on the last page.

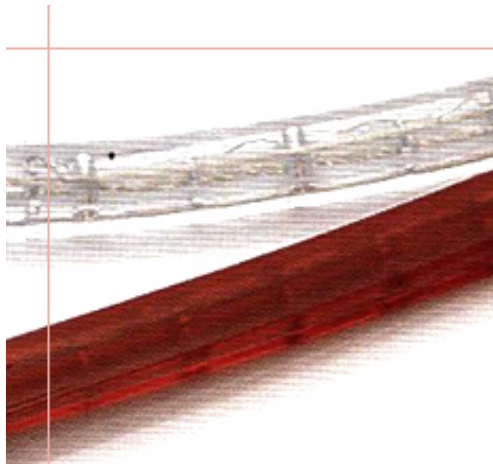
## Square Instant Flexilight - a square version of the popular Instant Flexilight



| Shape  | Thickness   | Bulb Spacing | No. of Wires | Colors        |
|--------|-------------|--------------|--------------|---------------|
| Square | 1/2" x 1/2" | 1"           | 2            | 7 Tube Colors |

|                            |   |   |              |   |
|----------------------------|---|---|--------------|---|
| Voltage                    | - | - | 120V         | - |
| Wattage                    | - | - | 3W/Foot      | - |
| Max Run                    | - | - | 200'         | - |
| Unit Length                | - | - | 24"          | - |
| Part No.<br>(Package Size) | - | - | SI-62 (200') | - |

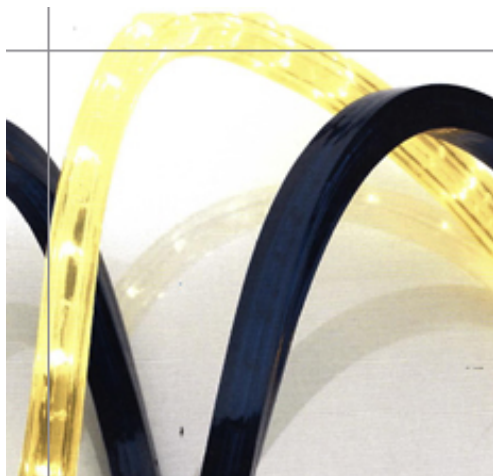
## Square Mini Flexilight - a square version of the popular Mini Flexilight



| Shape  | Thickness   | Bulb Spacing | No. of Wires | Colors        |
|--------|-------------|--------------|--------------|---------------|
| Square | 3/8" x 3/8" | 1"           | 2            | 7 Tube Colors |

|                            |               |               |               |   |
|----------------------------|---------------|---------------|---------------|---|
| Voltage                    | 12V           | 24V           | 110V/120V     | - |
| Wattage                    | 3W/Foot       | 3W/Foot       | 3W/Foot       | - |
| Max Run                    | 30'           | 60'           | 200'          | - |
| Unit Length                | 4"            | 8"            | 24"           | - |
| Part No.<br>(Package Size) | SF2-72 (200') | SF2-82 (200') | SF2-62 (200') | - |

## Square Chasing Flexilight - a square version of the popular Chasing Flexilight

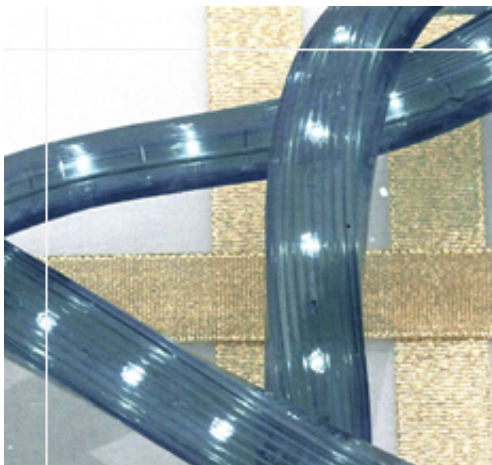


| Shape  | Thickness   | Bulb Spacing | No. of Wires | Colors        |
|--------|-------------|--------------|--------------|---------------|
| Square | 1/2" x 1x2" | 1"           | 3            | 7 Tube Colors |

|                            |     |     |               |   |
|----------------------------|-----|-----|---------------|---|
| Voltage                    | 12V | 24V | 120V          | - |
| Wattage                    | -   | -   | 3W/Foot       | - |
| Max Run                    | -   | -   | 150'          | - |
| Unit Length                | -   | -   | 48"           | - |
| Part No.<br>(Package Size) | -   | -   | SF3-62 (200') | - |

\*\*\* Lists of colors and accessories can be found on the last page.

## Rectango Instant Flexilight - a flat rope light with great brightness



| Shape       | Thickness   | Bulb Spacing | No. of Wires | Colors        |
|-------------|-------------|--------------|--------------|---------------|
| Rectangular | 1/2" x 3/4" | 1"           | 2            | 7 Tube Colors |

|                         |     |     |              |   |
|-------------------------|-----|-----|--------------|---|
| Voltage                 | 12V | 24V | 120V         | - |
| Wattage                 | -   | -   | 5W/Foot      | - |
| Max Run                 | -   | -   | 148'         | - |
| Unit Length             | -   | -   | 19"          | - |
| Part No. (Package Size) | -   | -   | RI-15 (148') | - |

\* The above tech specs are for horizontally inserted bulbs. Those for vertically inserted bulbs will differ. Please call for more details.

## Rectango Chasing Flexilight - a flat chasing rope light with great brightness

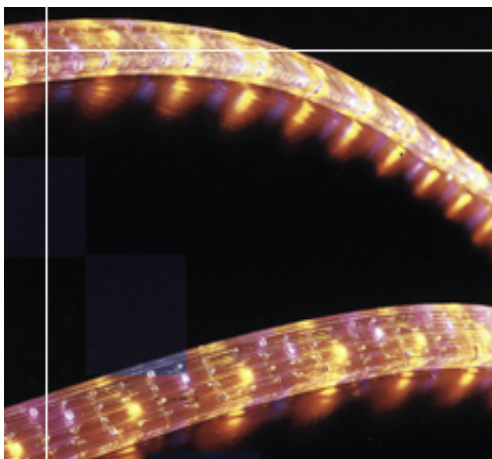


| Shape       | Thickness   | Bulb Spacing | No. of Wires | Colors        |
|-------------|-------------|--------------|--------------|---------------|
| Rectangular | 1/2" x 3/4" | 0.55"        | 3            | 7 Tube Colors |

|                         |     |     |              |   |
|-------------------------|-----|-----|--------------|---|
| Voltage                 | 12V | 24V | 120V         | - |
| Wattage                 | -   | -   | 10W/Foot     | - |
| Max Run                 | -   | -   | 74'          | - |
| Unit Length             | -   | -   | 14.7"        | - |
| Part No. (Package Size) | -   | -   | RC-15 (148') | - |

\* The above tech specs are for horizontally inserted bulbs. Those for vertically inserted bulbs will differ. Please call for more details.

## Rectango Rainbow Flexilight - the largest Flexilight with the most versatile lighting effect



| Shape       | Thickness    | Bulb Spacing | No. of Wires | Colors                              |
|-------------|--------------|--------------|--------------|-------------------------------------|
| Rectangular | 8/17" x 8/7" | 0.55"        | 5            | Multi-colored Bulbs in a Clear Tube |

|                         |     |     |              |   |
|-------------------------|-----|-----|--------------|---|
| Voltage                 | 12V | 24V | 120V         | - |
| Wattage                 | -   | -   | 24W/Foot     | - |
| Max Run                 | -   | -   | 41'          | - |
| Unit Length             | -   | -   | 39.3"        | - |
| Part No. (Package Size) | -   | -   | RF-15 (148') | - |

\*\*\* Lists of colors and accessories can be found on the last page.



PVC Tube Colors:

| Code | Color  |
|------|--------|
| CL   | Clear  |
| RD   | Red    |
| YW   | Yellow |
| BL   | Blue   |
| GN   | Green  |
| OR   | Orange |
| PL   | Purple |

| Code | Color              |
|------|--------------------|
| AB   | Aqua Blue          |
| HF   | Hell Fire          |
| DG   | Dark Grey          |
| SP   | Sakura Pink        |
| FG   | Fluorescent Green  |
| FO   | Fluorescent Orange |
| FP   | Fluorescent Pink   |

| Code | Color        |
|------|--------------|
| PW   | Pearl White  |
| PR   | Pearl Red    |
| PY   | Pearl Yellow |
| PB   | Pearl Blue   |
| PG   | Pearl Green  |
| PO   | Pearl Orange |
| PP   | Pearl Pink   |

| Code | Color                                  |
|------|--|
| RR   | Ruby Red<br>(with red bulbs)           |
| EG   | Emerald Green<br>(with green bulbs)    |
| AP   | Amethyst Purple<br>(with purple bulbs) |
| SB   | Sapphire Blue<br>(with blue bulbs)     |

Filament Bulb Colors:

| Code | Color  |
|------|--------|
| C    | Clear  |
| R    | Red    |
| Y    | Yellow |
| B    | Blue   |
| G    | Green  |
| P    | Purple |
|      |        |

LED Bulb Colors

| Code | Color        |
|------|--------------|
| W    | Cool White   |
| A    | Warm White   |
| B    | Blue         |
| E    | True Green   |
| R    | Red          |
| Y    | Yellow       |
| G    | Yellow Green |
| P    | Pink         |
| L    | Purple       |

Commonly Used Accessories & Controllers:

| Name                          | Function   |
|-------------------------------|--|
| Power Cord & Connector        | For connecting Flexilight to the power source  |
| Splice Connector              | Traditional screw-on type plastic connector between 2 pieces of Flexilight                     |
| PVC Connector                 | Convenient weatherproof connection between 2 pieces of Flexilight, used with silicon glue      |
| Power Cord with PVC Connector | For making a convenient weatherproof power connection  |
| Power Cord with Switch        | A power cord with an on/off switch   |
| Easy Splice Connector         | For connecting 2 pieces of Flexilight in a less visible way, often used with a shrinkable tube |
| Heat Shrink Tube              | For sealing open connection between 2 pieces of Flexilight, used with an Easy Splice Connector |
| End Cap                       | A clear plastic cap to terminate and insulate an open end of Flexilight                        |
| Mounting Clip                 | Nailed/glued on various types of surface, allowing Flexilight to be easily snapped in (indoor) |
| U-Channel                     | Nailed/glued on various types of surface, holding Flexilight in a straight line (length: 3ft)  |
| Tie Strap                     | For fixing Flexilight on a grid, a rope or a frame   |
| Suction Cup                   | Used with Tie Strap, for fixing Flexilight on a smooth and flat surface                        |
| T-Connector                   | Traditional screw-on type plastic connector for joining 3 pieces of Flexilight into a T-shape  |
| PVC T-Connector               | A T-Connector made of clear PVC without the screwlike connection                               |
| PVC X-Connector               | Made of clear PVC, for connecting 4 pieces of Flexilight in a cross-section.                   |
| Y-Cord                        | For connecting 2 pieces of Flexilight to the same power source or controller                   |
| Splice Cable                  | For connecting 2 pieces of Flexilight that are up to 6 feet apart from each other (outdoor)    |
| Extension Cable               | For extending the length of a regular Power Cord   |



Power Cord & Connector  
And End Cap



Splice Connector



Mounting Clip



U-Channel



Y-Cord

This mini catalog has shown you only a portion of the large variety of products that we carry. For details of other exciting lighting solutions, please give us a call at the toll-free number 1-888-303-0931. You will love what we have to offer. Thank you for your interest in our products!

Flexilight



Flexi-Star



Pearl / Shell Light



Flexi-Art



### Wide Loyal Development Limited

Suite 160 - 13160 Vanier Place  
Richmond BC, V6V 2J2, Canada

Tel: 1-888-303-0931

Fax: 1-888-303-0932

[www.wideloyal.com](http://www.wideloyal.com)





# Premium LED Strip light

LD-5165 Series. SMD 5050 (120Volts)

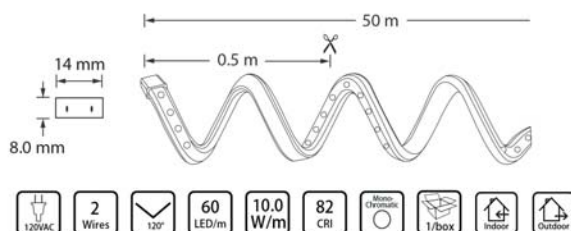


**30% Brighter**

100% Copper Wire

Lead Free Plastic

Double sided Anti-corrosive Coating



|                       |                                    |
|-----------------------|------------------------------------|
| LED type:             | SMD 5050 ( Epistar LM-80 ) EPISTAR |
| Power required:       | 120VAC                             |
| Luminous Flux (60mA): | 23Lm                               |
| Luminous Efficacy:    | 118Lm/W                            |
| Luminous Surface:     | 4.56 mm                            |
| Power consumption:    | 10.0 W/m                           |
| Length per roll:      | 50 meters                          |
| Quantity of LED:      | 60 / m                             |

Protection: IP68, double-sided anti-corrosion coating  
CRI (Ra): 82  
Wiring type: Copper, 20 gauge  
Compliance: CE, ROHS  
Dimmable: Yes  
Colors: Cool White (6,500k), Daylight White (4,500k)  
Warm White (3,000k), Red, Blue, Green, Yellow



## LED White Tones



3,000k

4,500k

6,500k



**Wide Loyal Development Ltd.**

• Los Angeles, CA • Seattle, WA • Vancouver, BC

US & Canada: 1-888-303-0931 (Toll Free) Fax: 1-888-303-0932 website: [www.wideloyal.com](http://www.wideloyal.com) e-mail: [sales@wideloyal.com](mailto:sales@wideloyal.com)

\* Information contained in this specification sheet is for informational purposes only and is subject to change without notice.