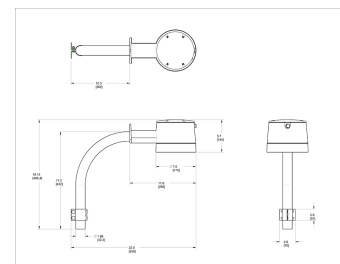


YBLED26/ARM RCL

High output 26W LED yardblaster delivers enough light to hit the broad side of a barn. Replaces 175W mercury vapor and 150W HPS barn lights. Durable finish withstands harsh environments.

Color: Silver gray

Weight: 11.4 lbs



LED Info

Watts: 26W
 Color Temp: 5000K (Cool)
 Color Accuracy: 67
 L70 Lifespan: 100000
 LM79 Lumens: 2,689
 Efficacy: 96 LPW

Driver Info

Type: Constant Current
 120V: 0.5A
 208V: N/A
 240V: N/A
 277V: N/A
 Input Watts: 28W
 Efficiency: 93%

Technical Specifications

cUL Listing:

Suitable for wet locations

Photocell:

Integrated 120V compatible photocell included

LEDs:

Multi-chip, high-output, long-life LED

Lifespan:

100,000-hour LED lifespan based on IES LM-80 results and TM-21 calculations

Driver:

Constant Current, 120V, 50/60 Hz, 700mA, 120V: 0.6A, Power Factor: 99.3%

THD:

7.0% at 120V

Surge Protection:

4kV

Cold Weather Starting:

Minimum starting temperature is -40°F / -40°C

Housing:

Precision die-cast aluminum housing and arm

Mounting:

Mounts on pole

Effective Projected Area:

EPA = 0.3

Recommended Mounting Height:

15 ft.

Lens:

High-impact, frosted polycarbonate lens

Reflector:

High-reflectance white paint

Gaskets:

High-temperature silicone

Replacement:

Replaces 175W mercury vapor and 150W HPS barn lights

Finish:

Our environmentally friendly polyester powder coatings are formulated for high-durability and long-lasting color, and contain no VOC or toxic heavy metals.

Color Stability:

LED color temperature is warrantied to shift no more than 200K in CCT over a 5 year period.

Color Uniformity:

RC's range of CCT (Correlated Color Temperature) follows the guidelines of the American National Standard for Specifications for the Chromaticity of Solid State Lighting (SSL) Products, ANSI C78.377-2011.

Green Technology:

Mercury and UV free, and RoHS compliant. Polyester powder coat finish formulated without the use of VOC or toxic heavy metals.

IESNA LM-79 & LM-80 Testing:

RC LED luminaires have been tested by an independent laboratory in accordance with IESNA LM-79 and LM-80, and have received the Department of Energy "Lighting Facts" label.



YBLED26/ARM RCL - continued

DLC Listed:

This product is on the Design Lights Consortium (DLC) Qualified Products List and is eligible for rebates from DLC Member Utilities.

California Title 24:

YBLED26/ARM complies with 2013 California Title 24 building and electrical codes as a commercial outdoor pole-mounted fixture ? 75 Watts as well as a residential outdoor fixture.

Patents:

The design of YBLED26 is protected by patents pending in US, Canada, China, Taiwan and Mexico.

Warranty:

RC warrants that our LED products will be free from defects in materials and workmanship for a period of five (5) years from the date of delivery to the end user, including coverage of light output, color stability, driver performance and fixture finish.

