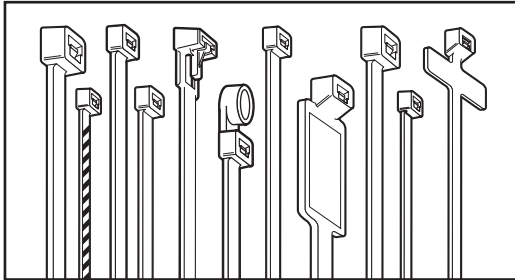


Catamount® Cable Ties

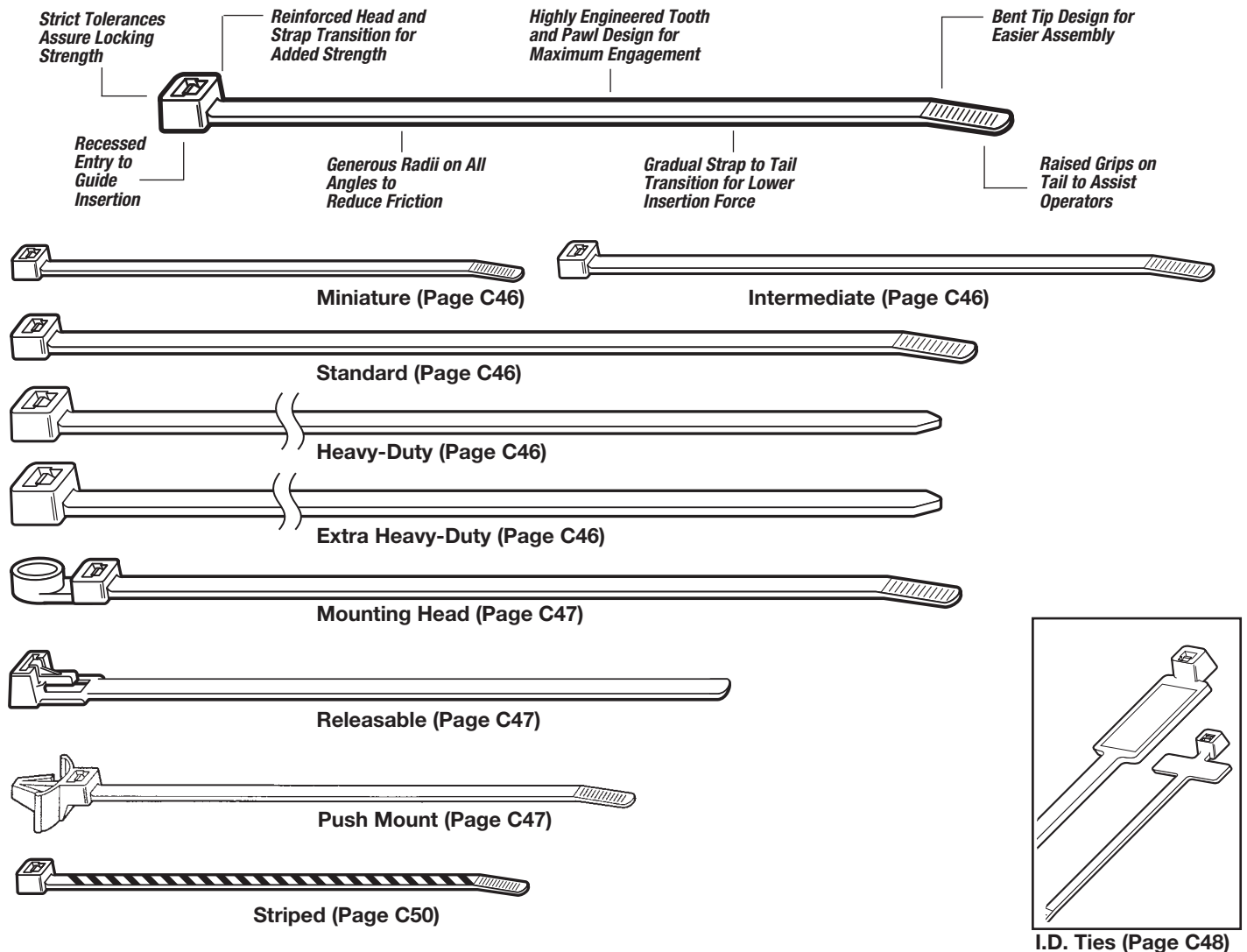


- Miniature
- Heavy-Duty
- Intermediate
- Extra Heavy-Duty
- Standard
- Releasable Ties
- Mounted Head
- Striped Ties
- Restricted Bundle
- Identification Ties

Catamount® Cable Ties are available in lengths from 4 in. to our exclusive 48 in. strap. Cable Ties will satisfy bundling requirements from 1/16 in. to 15 in. and loop tensile strengths from 18 to 175 pounds. Cable Ties are stocked in materials and colours as listed. Contact your Regional Sales Office for availability in special colours. Where applicable, Catamount® Cable Ties are UL Recognized.

State-of-the-art robotic and raw material handling equipment assures product and material integrity throughout the manufacturing process. Overall quality is achieved through statistical analysis and quality driven operator objectives.

Catamount® products are sold through stocking T&B® Distributors.



Catamount® Cable Ties

Catalogue Number Construction

L **4** **18** **HS** **-** **9** **M**

Product Prefix
 P - Plain Bagged Cable Ties
 L - Cable Ties

Length
 18 lb.
 30 lb.
 40 lb.
 50 lb.
 120 lb.
 175 lb.
 250 lb.

Tensile Strength

Type of Product
 Nylon 6/6 - Leave Blank
 Heat Stabilized - HS
 (Black and Natural Colour Only)
 Fluorescent - FL
 Mounting Head - MH
 Pushmount - PM
 Pushmount Releasable - PMR
 Releasable - R
 Restricted Bundle - TB
 Identification - ID

Colour
 See Colour Table

Quantity
 Q - 25 pack
 L - 50 pack
 C - 100 pack
 D - 500 pack
 M - 1,000 pack

MP **NY** **-** **750** **-** **9** **C**

Material
 Nylon
 TZ - Fluoropolymer
 PV - PVC
 PE - Polyethylene
 FR - Flame Retardant
 TL - Teflon

Size / #
 .75"

Colour
 See Colour Table

Quantity
 Q - 25 pack
 L - 50 pack
 C - 100 pack
 D - 500 pack
 M - 1,000 pack

- Product Prefix**
- MP - Mounting Pad
 - ID - Identification
 - S# - Strapping Thickness
 - MC - Mounting Cradle
 - PM - Push Mounts
 - SM - Screw Mounts
 - N# - Plain-Edged Cable Clamps / Width
 - W# - Self-Aligning Cable Clamps / Dia.
 - UL - Adjustable Cable Clamps
 - GG - Gator Grip
 - FA - Flat Adhesive Clip
 - FS - Flat Screw Clip
 - FR - Flat Rubber Adhesive Clip
 - MS - Snap Mount
 - RA - Round Adhesive Clip
 - SR - Spiral Wrap
 - GS - Grommeting
 - GR - Extruded Grommeting
 - GRU - Extruded Grommeting Uncut

Colour Table	
0 - Black (Weather-Resistant)	7 - Purple
1 - Brown	8 - Grey
2 - Red	9 - Natural
3 - Orange	11 - Fluorescent Pink
4 - Yellow	16 - Fluorescent Orange
5 - Green	17 - Fluorescent Yellow
6 - Blue	18 - Fluorescent Green
	20 - Fluorescent Blue

Catamount® Cable Ties

Property	ASTM Method	Test Condition	Units	Molded 6/6 Nylon	Heat Stabilized Nylon	UV Black Nylon
Materials for Molded Assembly Hardware						
Tensile Strength	D638	+23°C; 50% RH	kpsi	11.2	11.2	9.0
Elongation at Break	D638	+23°C; 50% RH	%	Z300	Z300	200
Yield Strength	D638	+23°C; 50% RH	kpsi	8.5	8.5	9.0
Shear Strength	D732	Dry As Molded (DAM)	kpsi	9.6	9.6	10.5
Deformation Under Load	D621	2,000 psi +50°C; DAM	%	1.4	1.4	1.2
IZOD Impact	D256	+23°C; 50% RH	ft. lb./in.	2.1	2.1	2.0
Tensile Impact Strength	D1822	+23°C; Long Specimen; DAM	ft. lb./in.2	240	240	N.R.
Melting Point	D789	Fisher-Johns	°F	491	491	491
Thermal Linear Expansion	D696	DAM	in./in./°F	4 x 10-5	4 x 10-5	N.R.
Thermal Conductivity	—	DAM Conche-Fitch	BTU - in/h . ft2 . °F	1.7	1.7	1.7
Brittleness Temperature	D746	50% RH	°F	-85	-85	-62
Oxygen Index	D2863	DAM 50% RH	%O2	28 31	28 31	25 31
UL Flammability	UL 94	DAM 50% RH	— —	V-2 V-2	V-2 V-2	V-2 V-2

- Material data as provided by our suppliers
- N.R. = Not Reported
- Tests conducted on 1/4 in. specimens

About Nylon...

Nylons possess an outstanding balance of properties combining strength, moderate stiffness, high service temperature and a high level of toughness. Nylon is particularly resistant to repeated impact, has a low co-efficient of friction and excellent abrasion resistance.

Nylon is resistant to fuels, lubricants and most chemicals, but is attacked by phenols, strong acids and oxidizing agents. Contact your Regional Sales Office for chemical data relative to your application.

Nylon is inherently susceptible to environmental conditions. Catamount® Cable Ties are moisturized to optimum performance levels at machine-side and should be stored in cool dry areas out of direct sunlight. Cable Ties are packaged in plastic bags to contain moisture and should remain sealed until ready for use.

Sample Thickness (in.)	UL Flammability	Energy Source	Specific Optical Density	
			at Maximum Smoke Accumulation	at 2 Minutes
NBS Smoke Generation for 6/6 Nylon				
1/16	94 V-2	Radiant (2.5 watts/sq cm)	13	0
1/8	94 V-2	Radiant Plus Flaming Gas Jets	26	1

Results as provided by National Bureau of Standards (NBS). Results may not be directly correlated with larger fires, such as burning buildings. Materials should be tested to your application.

Material	Minimum Thickness (in.)	Temperature Index		Hot Wire Ignition (sec)
		Electrical (°C)	Mechanical w/o Impact (°C)	
Temperature Index for Molded Nylons				
6/6 Nylon	0.580	1.25	85	15.0
UV Black Nylon	0.120	1.25	85	35.0
	0.240	1.25	85	35.0
Heat Stabilized Nylon	0.580	1.30	105	11.0
	0.120	1.30	110	20.0

Temperature Index is the temperature at which the specific property will decrease to one-half its original value after 60,000 hours exposure at that temperature.

Catamount® Cable Ties

Catamount® Ties and Terminals fit the needs of general-purpose fastening and wire terminations. Installers quickly discover that Catamount® products offer durable and value-priced cable bundling for a variety of commercial and residential construction applications. Electricians can also take advantage of other benefits in stocking Catamount® products in their toolboxes, such as more terminals per bag in most popular sizes than leading comparable brands.

Catamount® Ties and Terminals are offered in a wide range of sizes, styles and colours and meet listing requirements for most electrical termination and fastening projects. A choice of matching tools are also offered to provide quick and reliable installations.



Cat. No.	Length (in.)	Max. Bundle Dia. (in.)	Colour	Std. Pkg.
Miniature — Series 18				
L-4-18-9-C	4.0	5/8	Natural	100
L-4-18-0-C			Black	
L-6-18-9-C	6.4	1-1/2	Natural	
L-6-18-0-C			Black	
L-8-18-9-C	8.0	2	Natural	
L-8-18-0-C			Black	

Bulk packages available. Contact your Regional Sales Office.
Use QC-100, L-200, L-400-C or ERG-50 Installation Tools.



Cat. No.	Length (in.)	Max. Bundle Dia. (in.)	Colour	Std. Pkg.
Intermediate — Series 30				
L-5-30-9-C	5.6	1-1/4	Natural	100
L-5-30-0-C			Black	
L-8-40-9-C	8.5	2	Natural	
L-8-40-0-C			Black	
L-11-40-9-C	11.5	3	Natural	
L-11-40-0-C			Black	
L-14-40-9-C	14.5	4	Natural	
L-14-40-0-C			Black	

Bulk packages available. Contact your Regional Sales Office.
Use QC-100, L-200, L-400-C or ERG-50 Installation Tools.



Cat. No.	Length (in.)	Max. Bundle Dia. (in.)	Colour	Std. Pkg.
Standard — Series 50				
L-5-50-9-C	5.5	1	Natural	100
L-5-50-0-C			Black	
L-7-50-9-C	7.5	1-3/4	Natural	
L-7-50-0-C			Black	
L-11-50-9-C	11.1	3	Natural	
L-11-50-0-C			Black	
L-14-50-9-C	14.1	4	Natural	
L-14-50-0-C			Black	

Bulk packages available. Contact your Regional Sales Office.
Use QC-100, L-200, L-400-C or ERG-50 Installation Tools.



Cat. No.	Length (in.)	Max. Bundle Dia. (in.)	Colour	Std. Pkg.
Heavy-Duty — Series 120				
L-8-120-9-C	8.0	2	Natural	100
L-8-120-0-C			Black	
L-11-120-9-C	11.1	3	Natural	
L-11-120-0-C			Black	
L-14-120-9-C	14.2	4	Natural	
L-14-120-0-C			Black	
L-18-120-9-L	18.0	4-7/8	Natural	50
L-18-120-0-L			Black	
L-24-120-9-L	24.2	7	Natural	
L-24-120-0-L			Black	
L-28-120-9-L	28.0	8	Natural	
L-28-120-0-L			Black	

Use L-300C or ERG-120 Installation Tools.



Cat. No.	Length (in.)	Max. Bundle Dia. (in.)	Colour	Std. Pkg.
Extra Heavy-Duty — Series 175				
L-24-175-9-L	24.00	7.2	Natural	50
L-24-175-0-L			Black	
L-34-175-9-L	34.0	10	Natural	
L-36-175-9-L			36.0	
L-36-175-0-L	Black			
L-41-175-9-L	41.0	12	Natural	
L-41-175-0-L			Black	
L-48-175-9-L	48.0	15	Natural	
L-48-175-0-L			Black	

Use L300-FR or ERG-120 Installation Tools.

Sample Catalogue Order:

Length: L 4 18 9 C
Colour: 9 C
Tensile Strength: 4
Quantity: 18

4 in. Length, 18 lb. Tensile Strength, Natural Colour, 100-Pack Quantity

Colour Table

- 0 – Black (UV Resistant)
- 1 – Brown
- 2 – Red
- 3 – Orange
- 4 – Yellow
- 5 – Green
- 6 – Blue
- 7 – Purple
- 8 – Grey
- 9 – Natural
- 11 – Fluorescent Pink
- 16 – Fluorescent Orange
- 17 – Fluorescent Yellow
- 18 – Fluorescent Green
- 20 – Fluorescent Blue

Catamount® Cable Ties



Cat. No.	Length (in.)	Max. Bundle Dia. (in.)	Colour	Std. Pkg.
Releasable Ties				
L-5-50R-0-C	5.90	1-1/4	Black	100
L-8-50R-9-C	7.80	2	Natural	
L-8-50R-0-C			Black	
L-10-50R-9-C	11.27	3	Natural	
L-10-50R-0-C			Black	

Bulk packages available. Contact your Regional Sales Office.
Push button release.



Cat. No.	Length (in.)	Mounting Hole	Max. Panel Thickness	Max. Bundle Dia. (in.)	Colour	Std. Pkg.
Push Mount Cable Ties						
L-5-50PM-0-C	5.80	0.250	0.105	1	Black	100
L-7-50PM-9-C	8.20			1-3/4	Natural	
L-7-50PM-0-C				Black		

Bulk packages available. Contact your Regional Sales Office. Use QC-100, L-200 or L-400-C Installation Tools.
Black shown.



Cat. No.	Length (in.)	Max. Bundle Dia. (in.)	Width (in.)	Min. Loop Tensile	Mounting Head Screw Size	Colour	Std. Pkg.
Mounting Head Ties							
L-5-30MH-9-C	5.85	1-1/4	0.140	30	No. 8	Natural	100
L-5-30MH-0-C						Black	
L-7-50MH-9-C	7.50	1-3/4	0.185		No. 10	Natural	
L-7-50MH-0-C						Black	
L-11-50MH-9-C	11.10	3	0.187	50	Natural		
L-11-50MH-0-C					Black		
L-14-50MH-9-C	14.50	4	0.300	120	1/4 in.	Natural	
L-14-50MH-0-C						Black	
L-14-120MH-9-C	14.85	4	0.300	120	1/4 in.	Natural	
L-14-120MH-0-C						Black	

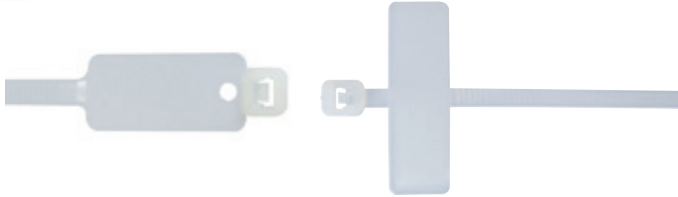
Bulk packages available. Contact your Regional Sales Office. Use QC-100, L-200, L-400-C, ERG-120 or ERG-50 Installation Tools.



Cat. No.	Length (in.)	Mounting Hole	Max. Panel Thickness	Max. Bundle Dia. (in.)	Colour	Std. Pkg.
Releasable Push Mount Cable Ties						
L-5-50PMR-9-C	5.80	0.250	0.105	1	Natural	100
L-7-50PMR-9-C	8.20			1-3/4	Natural	
L-7-50PMR-0-C				Black		

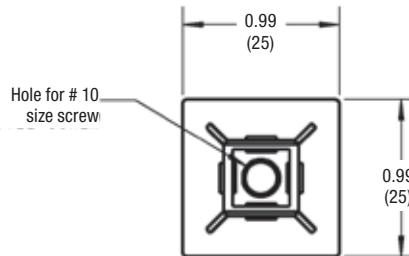
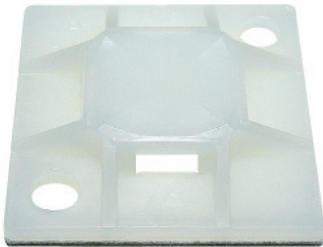
Bulk packages available. Contact your Regional Sales Office. Use QC-100, L-200 or L-400-C Installation Tools.

Catamount® Cable Ties



Cat. No.	Length (in.)	Max. Bundle Dia. (in.)	Colour	Std. Pkg.
Identification Ties				
L-7-50ID-9-C	7.875	1-3/4	Natural	100
L-4-18ID-9-C	4.0	3/4	Natural	

Bulk packages available. Contact your Regional Sales Office.
Use QC-100, L-200, L-400-C or ERG-50 Installation Tools.

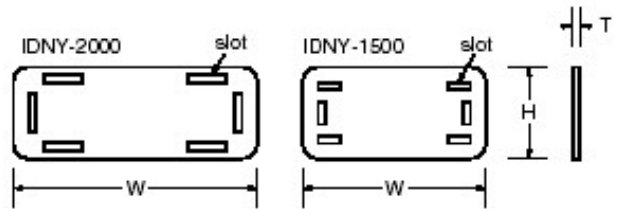
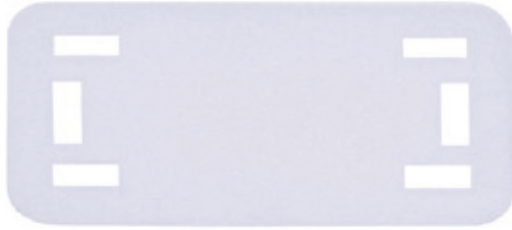


Cat. No.	Mount Method	Colour
Cable Tie Mounting Bases		
Catégorie 3/4 po		
MPNY-750-9-C	Synthetic Rubber Adhesive	Natural
MPNY-750-0-C	Synthetic Rubber Adhesive	Black
MPNY-750A-9-C	Acrylic Adhesive	Natural
MPNY-750A-0-C	Acrylic Adhesive	Black
MPNY-750S-9-C	Synthetic Rubber Adhesive c/w #10 Center Bolt Hole	Natural
MPNY-750S-0-C		Black
1 in. Class		
MPNY-1000-9-C	Synthetic Rubber Adhesive	Natural Nylon
MPNY-1000-0-C	Synthetic Rubber Adhesive	Black Nylon
MPNY-1000A-9-C	Acrylic Adhesive	Natural Nylon
MPNY-1000A-0-C	Acrylic Adhesive	Black Nylon
MPNY-1000S-9-C	Synthetic Rubber Adhesive c/w #10 Center Bolt Hole	Natural Nylon
MPNY-1000S-0-C		Black Nylon

For use with 18–50 lb. Cable Ties.

- Mounting Surface should be cleaned with alcohol based (IPA) cleaner before application
- Acrylic Based may be repositioned initially. Allow 24–72 hours setup for maximum performance with Acrylic Based adhesives
- For Rubber Based, allow 15 minutes setup for maximum performance

Catamount® Cable Ties



Cat. No.	Width (in.)	Height (in.)	Slot Height (in.)	Slot Width (in.)	Colour	Std. Pkg.
Identification Tags						
IDNY-1500-9-M	1.5	0.745	0.090	0.200	Natural	100
IDNY-2000-9-M	2.0		0.113	0.336	Natural	

- 3/4 in. and 1 in. mounts for use with 18# through 50# tensile cable ties
- Supplied on rubber-based or acrylic closed cell foam adhesive or with no adhesive for #10 screw mount applications
- Available in Natural Nylon 6/6 and Black Nylon 6/6
- UL Flammability 94 V-2 (clip)

Catamount® Cable Ties



- Striped ties are used to identify wire bundles primarily for P.I.C. and station cable binder marking
- Telecom applications

Cat. No.	Tie Colour	Stripe Colour	Diameter		Length		Width		Loop Tensile		Std. Pkg.
			(in.)	(mm)	(in.)	(mm)	(in.)	(mm)	lb.	kg	
Striped Ties											
L-4-18-1/10-L	Brown	White	1/16 - 7/8	2 - 16	4.0	102	0.100	3	18	8.2	50
L-4-18-1/2-L		Red									
L-4-18-1/0-L		Black									
L-4-18-1/4-L		Yellow									
L-4-18-1/7-L		Purple									
L-4-18-3/10-L	Orange	White									
L-4-18-3/2-L		Red									
L-4-18-3/0-L		Black									
L-4-18-3/4-L		Yellow									
L-4-18-3/7-L		Purple									
L-4-18-5/10-L	Green	White									
L-4-18-5/2-L		Red									
L-4-18-5/0-L		Black									
L-4-18-5/4-L		Yellow									
L-4-18-5/7-L		Purple									
L-4-18-6/10-L	Blue	White									
L-4-18-6/2-L		Red									
L-4-18-6/0-L		Black									
L-4-18-6/4-L		Yellow									
L-4-18-6/7-L		Purple									
L-4-18-8/10-L	Grey	White									
L-4-18-8/2-L		Red									
L-4-18-8/0-L		Black									
L-4-18-8/4-L		Yellow									
L-4-18-8/7-L		Purple									

Also available in bulk packages of 1,000.
 Use QC-100, L-200, L-400-C, or ERG50 Installation Tools.
 Consult your Regional Sales Office for availability and colours.