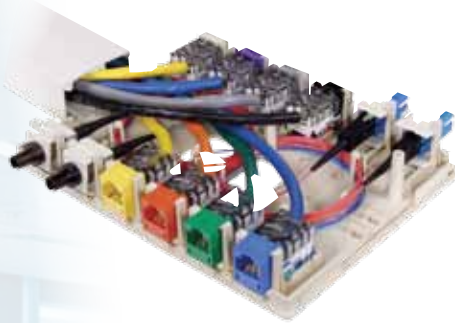




Compatible with Hubbell Labeling System, see page U7.

HUBBELL
Advantage

- Furniture and Surface Mounting
- Accepts Standard HXJ5 Jacks, Fiber and AV Connections
- ADA Compliant



Specifications



- Fiber storage in 4-, 6- and 12-port versions
- 4- and 6-port versions have ratcheting tabs for adjustable furniture mounting
- 1-, 2-, 4-, 6- and 12-port configurations

POLYTRAK® Raceway Compatibility Chart

Series	PT2	PP	PL	PW	PB	PS
ISB1		▲			▲*	
ISB2		▲			▲*	
ISB4		▲	▲	▲	▲*	
ISB6		▲	▲	▲	▲*	
ISB12		▲	▲	▲	▲*	

*Use PB3REDA transition fitting.

ISB Surface Mount Boxes

Size	Catalog No.
12-Port	ISB12xx
6-Port	ISB6xx
4-Port	ISB4xx
2-Port	ISB2xx
1-Port	ISB1xx

xx = Color: **AL** (Almond), **BK** (Black), **EI** (Electric Ivory), **GY** (Gray), **LA** (Light Almond), **OW** (Office White), and **W** (White). See color chart on page V30.

Note: SJ shielded jacks are not compatible with ISB surface mount boxes.



ISB12OW
(Loaded)



ISB6OW
(Loaded)



ISB4OW
(Loaded)



ISB2OW
(Loaded)



ISB1OW
(Loaded)