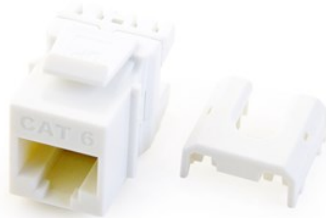


---

## CAT 6 QUICK CONNECT RJ45 KEYSTONE INSERT, WHITE

WP3476-WH | [On-Q](#)



---

### FEATURES & BENEFITS



- Easily terminate all four pairs using the Legrand Punch & Go Tool (AC3400)
- RJ45 Inserts can be terminated with any 110 punchdown tool
- Exceeds EIA/TIA 568A/B Cat 6 Performance Specifications
- Available in Black, Brown, White, Light Almond, Grey, Blue, Orange
- Available in contractor packs

---

### SPECIFICATIONS

#### GENERAL INFO

Cable Type: Cat 6  
Color: White  
Finish: 50 microinches 24K Hard Gold over 70-100 microinches Nickel  
Pair Count: 4  
Termination: via Punchdown Tool  
Connection Type: 8P8C  
Type: Keystone Insert  
Input Plug Type: RJ45 Male

#### LISTING AGENCIES/THIRD PARTY CERTIFICATIONS

RoHS: Yes  
CSA Listing Info: CAN/CSA-C22.2 No. 182.4-1990  
CSA Standard: Yes  
UL Listing No: ANSI/UL 1863  
UL Standard: Yes  
UN SPSC: 39121704

#### DIMENSIONS

Depth (Metric): 30 mm  
Depth (US): 1.18"  
Height (Metric): 22 mm  
Height (US): .87"  
Width (Metric): 16.9 mm  
Width (US): .665 in

#### TECHNICAL INFORMATION

Humidity: Max Noncondensing 93%  
Material: Phosphor Bronze Alloy  
Mounting: Wallplate or Strap  
OhmValue: Contact Resistance: Spring Wire - 20 milliohm max, IDC - 2.5 milliohm max  
Operating Temperature (Celsius): -10°C to 60°C  
Storage Temperature: -40°C to 70°C  
Wire Gauge: 22 - 24 AWG  
Receptacle Type: RJ45 Female  
Number Of Receptacles: 1