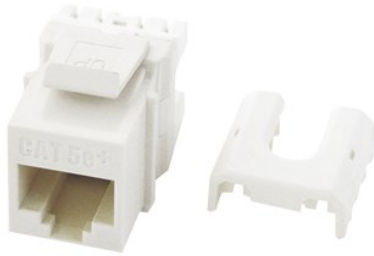


---

## CAT 5E QUICK CONNECT RJ45 KEYSTONE INSERT, WHITE

WP3475-WH | [On-Q](#)



---

### FEATURES & BENEFITS



- Easily terminate all four pairs using the Legrand Punch & Go Tool (AC3400)
- RJ45 Inserts can be terminated with any 110 punchdown tool
- Exceeds EIA/TIA 568A/B Cat 5e Performance Specifications
- Available in Black, Brown, White, Light Almond, Grey, Blue, Orange, Ivory, Red
- Contractor packs available in quantities of 50. To order, use part number WP3475-WH-50

---

### SPECIFICATIONS

#### GENERAL INFO

Color: White  
Termination: 8P8C  
Connection Type: RJ45 Female  
Type: Keystone Insert

#### ASSEMBLY/INSTALLATION INFORMATION

Installation Tips: Terminate with Punch & Go Tool (AC3400)

#### LISTING AGENCIES/THIRD PARTY CERTIFICATIONS

RoHS: Yes  
CSA Listing Info: CAN/CSA-C22.2 No. 182.4-1990  
CSA Standard: Yes  
UL Listing No: ANSI/UL 1863  
UL Standard: Yes  
UN SPSC: 39121704

#### DIMENSIONS

Depth (Metric): 30 mm  
Depth (US): 1.18"  
Height (Metric): 22 mm  
Height (US): .87"  
Width (Metric): 16.9 mm  
Width (US): .665 in

#### TECHNICAL INFORMATION

Cat5 Cable Rating: Cat5e  
Humidity: 93% Maximum Noncondensing  
Material: High Impact Flame Retardant Plastic  
Operating Temperature (Celsius): -10°C to 60°C  
Performance Rating: Meets TIA/EIA-568-B.2-1 Cat.6 Short Link requirements  
Product Fits Into: Keystone Cutout  
Storage Temperature: -40°C to 70°C