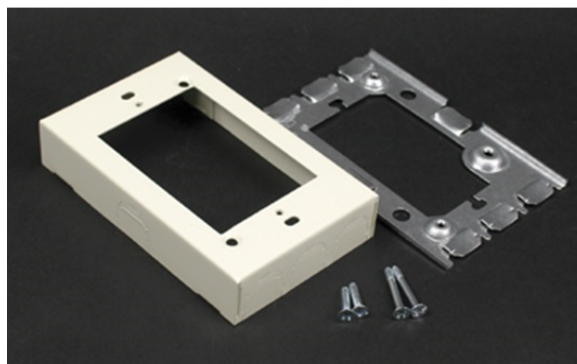


500/700 Single-Gang Flush Type Extension Adapter Fitting

V5751, 5751WH



For extensions from existing flush switch and receptacle boxes. Larger gang boxes available by special order. Single-gang: 4 5/8" L x 2 7/8" W [117mm x 73mm].

features & benefits

specifications

General Info

Available Colors:

V5751 - Ivory
5751WH - White

Product Series: 500, 700
Component Type: Brackets & Plates

Technical Information

Material: Steel
Capacity: Single-Channel