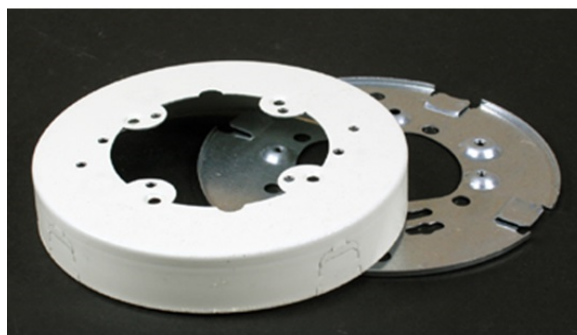


500/700 Open Base Extension Box Fitting

V5737A, 5737AWH



Mounts onto 3 1/4" or 4" [83mm or 102mm] conduit boxes, or other recessed outlets. Cover accepts devices with mounting screw centers of 2 3/4", 3 1/2", or 4 1/16" [70mm, 89mm, or 103mm]. Can be used with 5736 Blank Cover as a pull or junction box. Outside diameter 5 1/2" [140mm].

features & benefits

specifications

General Info

Available Colors:

V5737A- Ivory
5737AWH - White

Product Series: 500, 700
Component Type: Boxes

Technical Information

Material: Steel
Capacity: Single-Channel