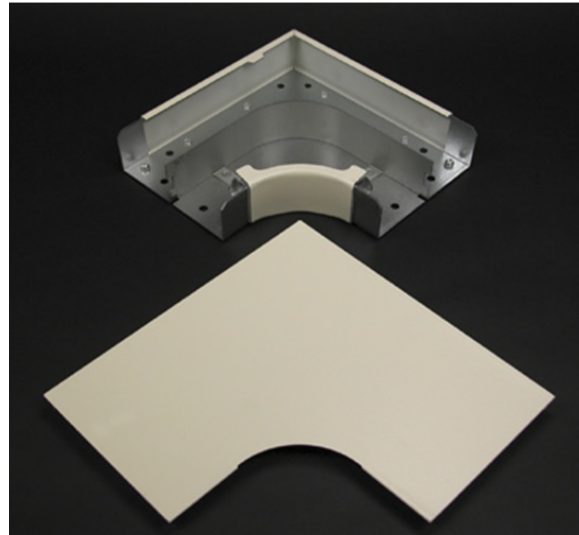


## 4000 Radiused Full Capacity Flat Elbow Fitting

V4011FO, G4011FO



Full capacity 90 degree flat corner used in divided or undivided applications. Provides 2" [51mm] bend radius control for UTP, STP and fiber optic installations. Ideal for new installation when the cable is lay-in or pull-through.

### features & benefits

### specifications

#### General Info

Available Colors:

V4011FO - Ivory  
G4011FO - Gray

Product Series: 4000  
Component Type: Fittings & Accessories

#### Technical Information

Material: Steel  
Capacity: Multiple Channel