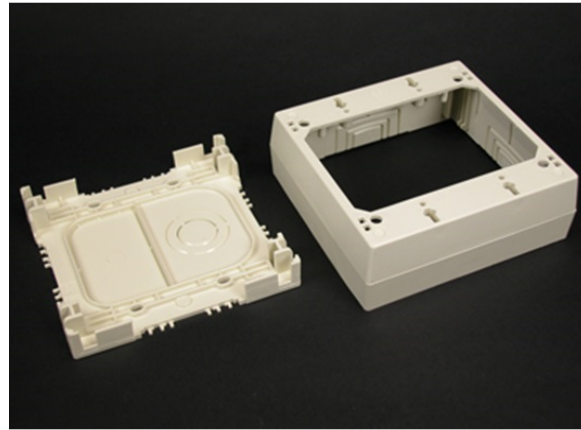


Eclipse PN03, PN05, PN10 Two-Gang Device Box Fitting

PSB2FW, PSB2V, PSB2WH



Accepts all standard two-gang NEMA faceplates and keystone jacks. Twistouts on all four sides for PN03, PN05, and PN10 Series Raceways. Has 1/2" and 3/4" concentric trade size KOs, as well as rectangular KO for wall box mounting. Designed for use with Ortronics WiJack Wireless Access Point.

features & benefits

specifications

General Info

Available Colors:

PSB2-FW - Fog White

PSB2-V - Ivory

PSB2-WH - White

Product Series: Eclipse
Component Type: Boxes

Technical Information

Material: Nonmetallic
Capacity: Single-Channel