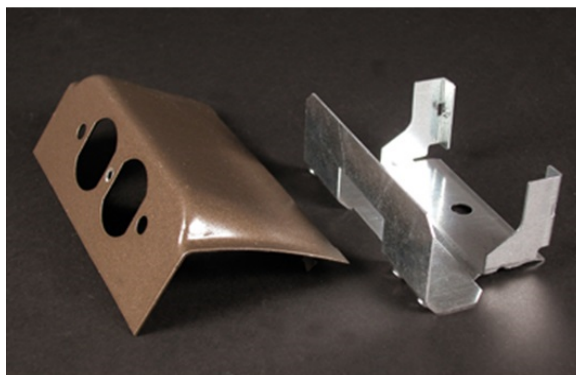


DS4000 Downward Duplex Device Plate Fitting

DSDWND-DV, DSDWND-BK,
DSDWND-DG



Installs 15A and 20A duplex receptacles or 106 style data frames into DS4000 Series Raceway in a downward facing, protected position.

features & benefits

specifications

General Info

Available Colors:

DSDWND-DV - Fog White
DSDWND-DG - Designer Gray
DSDWND-BK- Matte Black
DSDWND-BZ - Designer Bronze

Product Series: DS4000
Component Type: Brackets & Plates

Technical Information

Material: Steel
Capacity: Multiple Channel