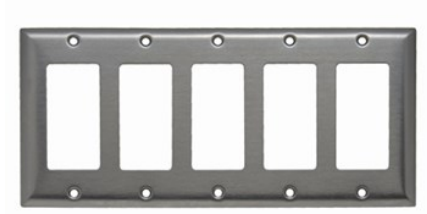

DECORATOR OPENINGS, FIVE GANG, 302/304 STAINLESS STEEL

SS265 | [Pass & Seymour](#)



FEATURES & BENEFITS

Smooth Metal Wall Plate 5gang Decorator 302/304 Stainless Steel



- Type 302/304 Stainless Steel, non-magnetic: .032" nominal thickness.
- Brushed finish.
- This alloy contains 18% chromium and 8% nickel for superior resistance to corrosion.
- Recommended for use in food processing plants, dairies, chemical plants, and other industrial, institutional, and commercial applications where corrosive atmospheres exist.
- Standard, Jumbo, and Tandem plates available, as well as special Panel plates up to 5-gangs high and 10-gangs wide.
- Packaged in protective film, with finish-matching screws.
- Variety of special plated finishes.
- Paintable to match plastic plates.
- Can be silk-screened or engraved, and custom punched with over 300 opening styles.

SPECIFICATIONS

GENERAL INFO

Size: Standard
Style: Decorator

LISTING AGENCIES/THIRD PARTY CERTIFICATIONS

RoHS: Yes
CSA Listing Info: Yes
CUL Listing No: No
cULus: No
cURus: No
Federal Spec: No

UL Listing No: Yes
UN SPSC: 39121704
UR: No

DIMENSIONS

Depth (US): 4.5
Width (US): 10
Volume: 10.575
Weight: 0.291
Height: 0.235

TECHNICAL INFORMATION

Material: 302/304 Stainless Steel
Capacity: 5-gang

COUNTRY OF ORIGIN

Country Of Origin: UNITED STATES OF AMERICA