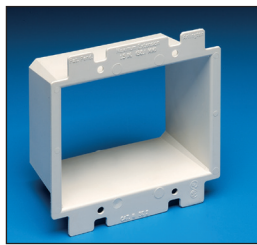


Box Extenders

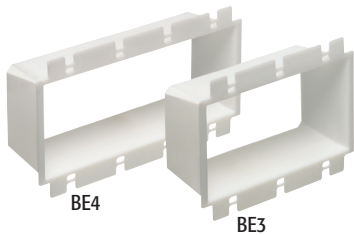
Levels and supports the wiring device where the box is set back from the wall surface. Extends the box up to 1-1/2".



BE1



BE2



BE4

BE3

Scan For Video



**HEAVY-DUTY
PLASTIC
UL Listed!**

CATALOG NUMBER	UPC/DCI/NAED MFG #018997	UNIT PKG	STD PKG	DIM A	DIM B	DIM C
BE1	40160	25	250	2.313	4.188	1.813
BE1BAG	51905	1	100	2.313	4.188	1.813
BE2	48960	25	25	4.100	4.188	1.813
BE3	48967	10	10	5.937	4.188	1.813
BE4	48968	10	10	7.749	4.188	1.813

BE1BAG includes two #6 x 2" long screws.

PATENTED.

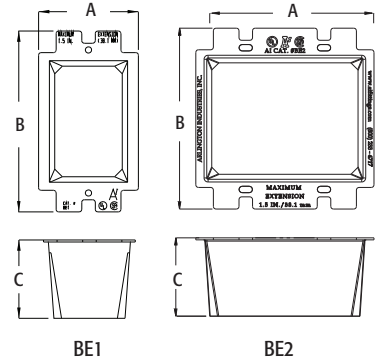


E170558 LR49636

**TWO HOUR
FIRE RATING**

FEATURES AND BENEFITS

- Allows the contractor to comply with 2014 NEC Article 314.20
- Levels and supports the wiring device where the box is set back from the wall surface (adjusts up to a 1-1/2" box extension)
- Works in handy boxes and 4" square electrical boxes with plaster rings for single switches or receptacle
- Functions with all standard devices, switches, and GFCIs
- Manufactured from 105°C continuous use 94V0 rated flame retardant plastic for safer installations



BE1

BE2

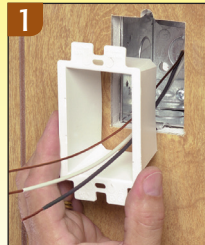
Installation Instructions

PROBLEM..



Electrical box set back from wall surface.

SOLUTION...



1 Pull wires through, then press the BE1 firmly into the electrical box.



2 Attach wires to receptacle. Then tighten screws for a level, fully supported, code compliant installation.

To install without removing device wires, tilt the device through the BE1 at a slight angle, straighten it and tighten the screws!