

TYPES YAV-L BOX AND YAV-L (Continued)

HYLUG™

B-16

CATALOG NUMBER	WIRE RANGE	STUD SIZE	MS20659 DASH NO.†	DIMENSIONS (INCH)				BULK CAT. NO.	INSTALLATION TOOLING				WIRE STRIP LENGTH
				C	L MAX.	Y MAX.	Z MIN.		HYTOOL	DIE INDEX	HYPRESS		
											Y29B, Y29NC	Y35, Y39, Y750 ▲	
—	1	8-10	—	.76	1.67	1.32	.25	YAV1C-L6•	42	DV1L Nest Indentor (1) Crimp	UV1L Nest Y34PLA Indentor (1) Crimp	5/8"	
YAV1C-L1 BOX	Aircraft	1/4	-115	.76	1.84	1.45	.38	YAV1C-L1•					
YAV1C-L2 BOX	AN 1	5/16	-149	.76	1.84	1.45	.38	YAV1C-L2•					
YAV1C-L BOX	Flex	3/8	-116	.76	1.84	1.45	.38	YAV1C-L					
YAV1C-L3 BOX		1/2	-134	.86	1.97	1.54	.46	YAV1C-L3					
YAV25-L1 BOX	1/0	1/4	-117	.83	2.01	1.61	.43	YAV25-L1	43	DV25L Nest Indentor (1) Crimp	UV25L Nest Y34PA Indentor (1) Crimp	11/16"	
YAV25-L2 BOX	Aircraft	5/16	-151	.83	2.01	1.61	.43	YAV25-L2					
YAV25-L BOX	AN 1/0	3/8	-118	.83	2.01	1.61	.43	YAV25-L•					
YAV25-L3 BOX	Flex	1/2	-135	.88	2.09	1.64	.46	YAV25-L3•					
YAV25-L4 BOX		5/8	—	.88	2.31	1.80	.62	YAV25-L4					
YAV26-L1 BOX	2/0	1/4	-153	.93	2.32	1.85	.48	YAV26-L1	44	DV26L Nest Indentor (1) Crimp	UV26L Nest Y34PA Indentor (1) Crimp	13/16"	
YAV26-L2 BOX	Aircraft	5/16	-119	.93	2.32	1.85	.48	YAV26-L2					
YAV26-L BOX	AN 2/0	3/8	-120	.93	2.32	1.85	.48	YAV26-L•					
YAV26-L3 BOX	Flex	1/2	-136	.93	2.32	1.85	.48	YAV26-L3•					
YAV26-L12 BOX		5/8	—	.93	2.52	1.99	.62	YAV26-L12					
YAV27-L BOX	3/0 Aircraft	3/8	-121	1.03	2.45	1.93	.52	YAV27-L•	45	—	UV27L Nest Y34PA Indentor (1) Crimp	13/16"	
YAV27-L1 BOX	AN 3/0	1/2	-122	1.03	2.45	1.93	.52	YAV27-L1					
YAV27-L15 BOX	Flex	5/8	—	1.03	2.60	2.04	.62	YAV27-L15					
YAV28-L BOX	4/0	3/8	-123	1.12	2.72	2.16	.60	YAV28-L	46	—	UV28L Nest Y34PA Indentor (1) Crimp	7/8"	
YAV28-L12 BOX	Aircraft	1/2	-124	1.12	2.72	2.16	.60	YAV28-L12					
YAV28-L13 BOX	AN 4/0	5/8	-159	1.12	2.72	2.16	.60	YAV28-L13					
YAV28-L14 BOX	Flex	3/4	-160	1.23	2.95	2.33	.78	YAV28-L14					

Non-Ratchet:
MY28,
MY29-11

† Class 1.
• Available in (90°) right angle design. Suffix "RS" replaces suffix "L".
▲ Use Y35P3 INDENTOR ADAPTER with Y35 and Y39 Tool.

■ Bench Mount Adapter - Cat. BMY-BCH-MT is available for Type "MY" HYTOOLS™.
Add "NK" suffix for nickel plated Hylugs™ for high temperature applications up to 650° F continuous service and 750° intermittent service.

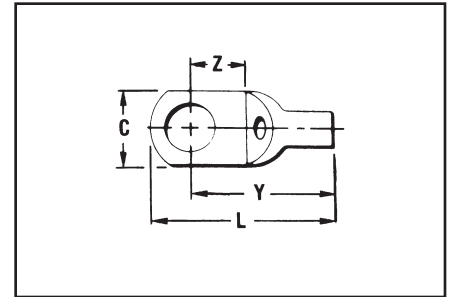
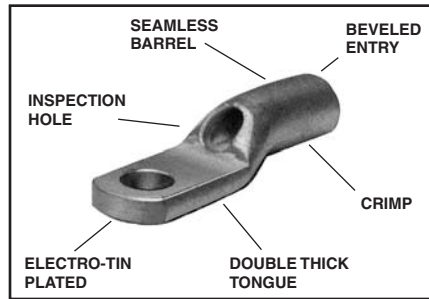
TYPES YAV-L BOX AND YAV-L

HYLUG™

LARGE SIZE UNINSULATED COMPRESSION TERMINALS
SEAMLESS UNINSULATED COMPRESSION RING
TONGUE TERMINAL

#8-4/0 STR. COPPER

HYLUG™ Type YAV is a seamless, heavy duty uninsulated compression terminal manufactured from electrolytic copper and is for use on Type AN aircraft cable, extra flexible conductors and commercial (code) conductors. The seamless tubing produces a double thick tongue and seamless barrel design provides a



strong connector for demanding applications requiring high reliability.

Applications include aircraft, industrials, hospitals, electric utilities, marine, computers, and other equipment subject to vibration or requiring dependable electrical performance.

The YAV HYLUG™ terminals meet the requirements of MIL-T-7928 and are listed per MS20659 for use with copper aircraft cable per MIL-W-5086

The benefits of YAV-L connectors are the same as YAV connectors for stranded conductors.

B-15

CATALOG NUMBER	WIRE RANGE	STUD SIZE	MS20659 DASH NO.†	DIMENSIONS (INCH)				BULK CAT. NO.	INSTALLATION TOOLING				WIRE STRIP LENGTH	
				C	L MAX.	Y MAX.	Z MIN.		HYTOOL	DIE INDEX	HYPRESS			
											Y29B, Y29NC	Y35, Y39, Y750 ▲		
—	8 Aircraft	6-8	-140	.41	1.15	.94	.28	YAV8C-L14•	Non-Ratchet: Y10MV, MY29-11 Ratchet: MR4C, MR8-9Q, Y8MR8-1, M8ND w/ N8CT Die Set	38	DC8L-1 Nest Y29PL Indentor (1) Crimp	UV8L Nest Y34PL Indentor (1) Crimp	1/2"	
YAV8C-L BOX		8-10	-107	.41	1.15	.94	.28	YAV8C-L•						
YAV8C-L1 BOX		1/4	-141	.46	1.22	.99	.32	YAV8C-L1•						
YAV8C-L2 BOX		AN 8	5/16	-108	.57	1.30	1.01	.34						YAV8C-L2
YAV8C-L3 BOX		Flex	3/8	-129	.57	1.30	1.01	.34						YAV8C-L3•
YAV8C-L4 BOX		1/2	-142	.73	1.52	1.14	.48	YAV8C-L4•						
YAV6C-L1 BOX	5 & 6 Aircraft	8-10	-130	.48	1.31	1.06	.29	YAV6C-L1•	Non-Ratchet: MY28, MY29-11 Ratchet: MR4C	39	DC6L Nest Y29PL Indentor (1) Crimp	UV6L Nest Y34PLA Indentor (1) Crimp	1/2"	
YAV6C-L BOX		1/4	-109	.48	1.31	1.06	.29	YAV6C-L•						
YAV6C-L4 BOX		AN 5 & 6	5/16	-131	.60	1.43	1.13	.35						YAV6C-L4•
YAV6C-L2 BOX		Flex	3/8	-110	.60	1.43	1.13	.35						YAV6C-L2•
YAV6C-L10 BOX			1/2	-143	.73	1.64	1.26	.49						YAV6C-L10
YAV4C-L3 BOX	4 Aircraft	8-10	-144	.55	1.37	1.11	.28	YAV4C-L3•	Non-Ratchet: MY28, MY29-11 Ratchet: MR4C	40	DC4L Nest Y29PL Indentor (1) Crimp	UV4L Nest Y34PLA Indentor (1) Crimp	1/2"	
YAV4C-L BOX		1/4	-111	.55	1.37	1.11	.28	YAV4C-L•						
YAV4C-L4 BOX		AN 4	5/16	-132	.63	1.48	1.17	.33						YAV4C-L4•
YAV4C-L2 BOX		Flex	3/8	-112	.63	1.48	1.17	.33						YAV4C-L2•
YAV4C-L5 BOX			1/2	-145	.73	1.68	1.30	.47						YAV4C-L5
—	2 Aircraft	8-10	-146	.69	1.72	1.37	.35	YAV2C-L3	Non-Ratchet: MY28, MY29-11	41	DC2L Nest Y29PL Indentor (1) Crimp	UV2L Nest Y34PLA Indentor (1) Crimp	5/8"	
YAV2C-L1 BOX		1/4	-113	.69	1.72	1.37	.35	YAV2C-L1•						
YAV2C-L2 BOX		AN 2	5/16	-147	.69	1.72	1.37	.35						YAV2C-L2•
YAV2C-L BOX		Flex	3/8	-114	.69	1.72	1.37	.35						YAV2C-L•
YAV2C-L4 BOX			1/2	-133	.77	1.89	1.49	.46						YAV2C-L4

† Class 1.
• Available in (90°) right angle design. Suffix "RS" REPLACES SUFFIX "L".
▲ Use Y35P3 INDENTOR ADAPTER with Y35 and Y39 Tool.

■ Bench Mount Adapter - Cat. BMY-BCH-MT is available for Type "MY" HYTOOLS™. Add "NK" suffix for nickel plated Hylugs™ for high temperature applications up to 650° F continuous service and 750° intermittent service.