

# EMT Straps

For EMT

## Type 1901 & Type 1807

### 1-Hole Click-On

#### Use:

Click-on type one-hole straps for EMT. Provides support for the conduits, as required by the National Electrical Code.

#### Material/Finish:

Steel/Zinc Plated

#### Third Party Certification:

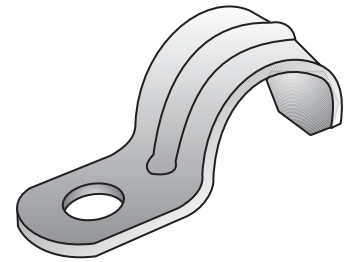


UL Listed: E-163167  
1901 through 1906

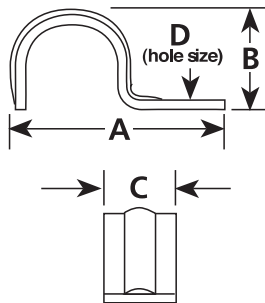


CSA Certified: LR104691  
1901 through 1903

Trade Size (inches)	Catalog Number	Dimensions in Inches			
		A	B	C	D
1/2	1901	1.64	0.80	0.57	3/32
3/4	1902	1.96	0.98	0.63	3/32
1	1903	2.22	1.13	0.75	3/32
1 1/4	1904	2.86	1.50	0.87	3/8
1 1/2	1905	3.14	1.75	0.99	3/8
2	1906	3.89	2.00	1.11	7/16
2 1/2	1807	4.99	2.85	1.24	1 1/32
3	1808	5.55	3.47	1.25	1 1/32
3 1/2	1809	6.25	4.10	1.25	1 1/32
4	1810	7.00	4.51	1.26	1 1/32



Type 1901



## Type TH-1901 & Type TH-1807

### 2-Hole Snap-On

#### Use:

Snap-on type two-hole straps for EMT are used where higher load bearing supports are desired.

#### Material/Finish:

Steel/Zinc Plated

#### Third Party Certification:

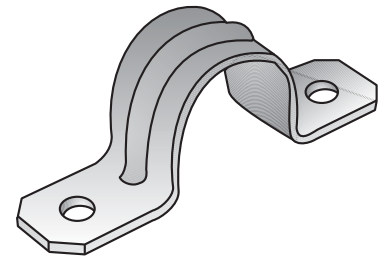


UL Listed: E-163167  
TH-1901 through TH-1905



CSA Certified: LR104691

Trade Size (inches)	Catalog Number	Dimensions in Inches			
		A	B	C	D
1/2	TH-1901	2.17	0.72	0.56	3/16
3/4	TH-1902	2.71	0.91	0.61	3/16
1	TH-1903	3.10	1.12	0.68	3/16
1 1/4	TH-1904	3.70	1.44	0.74	1/4
1 1/2	TH-1905	4.24	1.67	0.87	1/4
2	TH-1906	4.83	2.13	1.00	3/8
2 1/2	TH-1807	5.98	2.87	0.98	3/8
3	TH-1808	6.37	3.56	0.99	3/8
3 1/2	TH-1809	7.37	4.05	1.00	7/16
4	TH-1810	8.12	4.51	1.00	7/16



Type TH-1901

