

## Contents

---

<b>General Specifications</b>	2-2
<b>Overview - Features &amp; Benefits</b>	2-3
<b>Selection Procedure</b>	2-4
<b>Service Entrance Module</b>	2-5
Fusible Switch	
Standard Tap Boxes	
Feed Through Tap Boxes	
Direct Tap	
<b>Meter Centre Stack, Socket Module and Main Bus Connector Kit</b>	2-6
Basic Meter Stack	
Complete Meter Stack Module	
Meter Socket Module	
Main Bus Connector Kit	
<b>Sub-service Circuit Breakers and Corner Elbow Modules</b>	2-7
<b>Accessories</b>	2-8
<b>Configuration Data</b>	2-9
With switch	
With standard tap box or transition box	
With feed through tap box	
<b>Dimensions</b>	2-11
Meter stack	
Meter socket modules	
<b>Knock Out Data</b>	2-13
Tap Boxes	
Meter Stack	
<b>Meter Centre Layout Example</b>	2-14

# Modular Meter Centres

## General Specifications

*Selection*

Siemens offers the most versatile selection of metering equipment available. The Siemens metering line offers an economical approach to virtually any metering requirement, whether it be for residential, commercial or industrial applications at 240V.

### Meeting All Your Service Needs

Offering the maximum in versatility to meet all your needs, Siemens metering centres are designed for single phase three wire 120/240V AC or three phase four wire 120/208V AC applications with sub-service modules of 100A, 125A and 200A. Siemens meter centres are designed to meet CSA requirements C22.2 No.229 for "cold metering" and are CSA certified under file #13069. In cold metering, the sub service breakers are connected on the line side of the meter sockets, protecting the meter and all electrical equipment fed. All individual metering stacks are manufactured to tight specifications and can be selected in pre-assembled units, to minimize on-site labour or as a separate plug-in module for a customized installation when required. The modular construction offers real post installation flexibility permitting on-site changes to be made with minimum down time.

### Direct Tap Feature

When using Siemens' direct tap Main Lug Feed Kit for services at 600A, no tap box is required, therefore saving considerable installation room.

This custom designed Main Lug Feed Kit allows connection of main incoming cables directly to the Meter Stack main bus and eliminates the need for a sub service tap box. If more working space is required to facilitate the connection, a Transition Box can be used.

### Meter Stack Design

All Siemens meter stacks are of uniform design with flexibility in mind. A combination of slide-in metering modules from 100 to 200A fit in any meter stack.

### Mounting Rails

Easy to use, the mounting rails simplify installation of the modular meter centre. They enable the metering stacks to be rapidly pre-installed on the wall, automatically aligning the sections for permanent mechanical installation and electrical joining of the main bus.



### Meter Stack Enclosure

Meter stack enclosures, barriers and end plates are manufactured of galvanized steel. Front covers are fabricated of phosphatized steel finished with ASA 61 light grey paint. Meter socket front covers are embossed and fitted with a label to allow suite identification on the enclosure adjacent to its respective service breaker.

### Bus Bar

The main horizontal bus consists of tin plated high conductivity aluminum for maximum performance and economy. The main cross bus is installed at the bottom of the metering stacks and is rated at 600 or 1200A while the vertical bussing is rated at 800A per section.

### Flexibility

Siemens service entrance equipment can be top or bottom fed, depending on site requirements, for single connection or feed through applications.

Each meter stack has a convenient side wireway for branch wiring which can exit at the top or at the bottom. A user-friendly combination of knockouts is factory installed at the top to minimize installation time.

### Slide-in Modular Design

Each individual slide-in module design allows for fast installation and provide flexibility for future needs. If the branch requirement changes, the module can be interchanged without changing the complete stack. By simply removing two screws from the front cover, the slide-in module can be removed for easy replacement.

### Entry Plates

Main cable tap boxes can be provided with punched or unpunched aluminum or fiber entry plates.

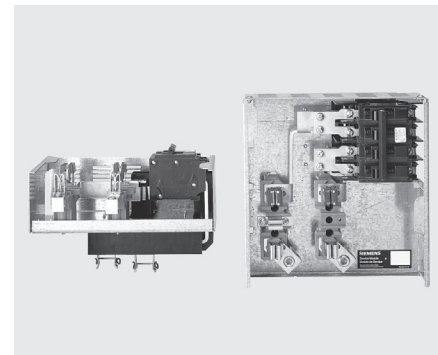
### Branch Circuit Breakers

Compact, high performance type plug-in or bolt-on circuit breakers can be selected to address site requirements. Interrupting ratings up to 100kA combine thermal and magnetic trip elements and feature: isolated pole construction with common trip bar for multiple pole devices; silver alloy contacts and high pressure straight-in load connectors.

Series rating are also available for approved combinations up to 100kA.

### Meter Socket Jaws

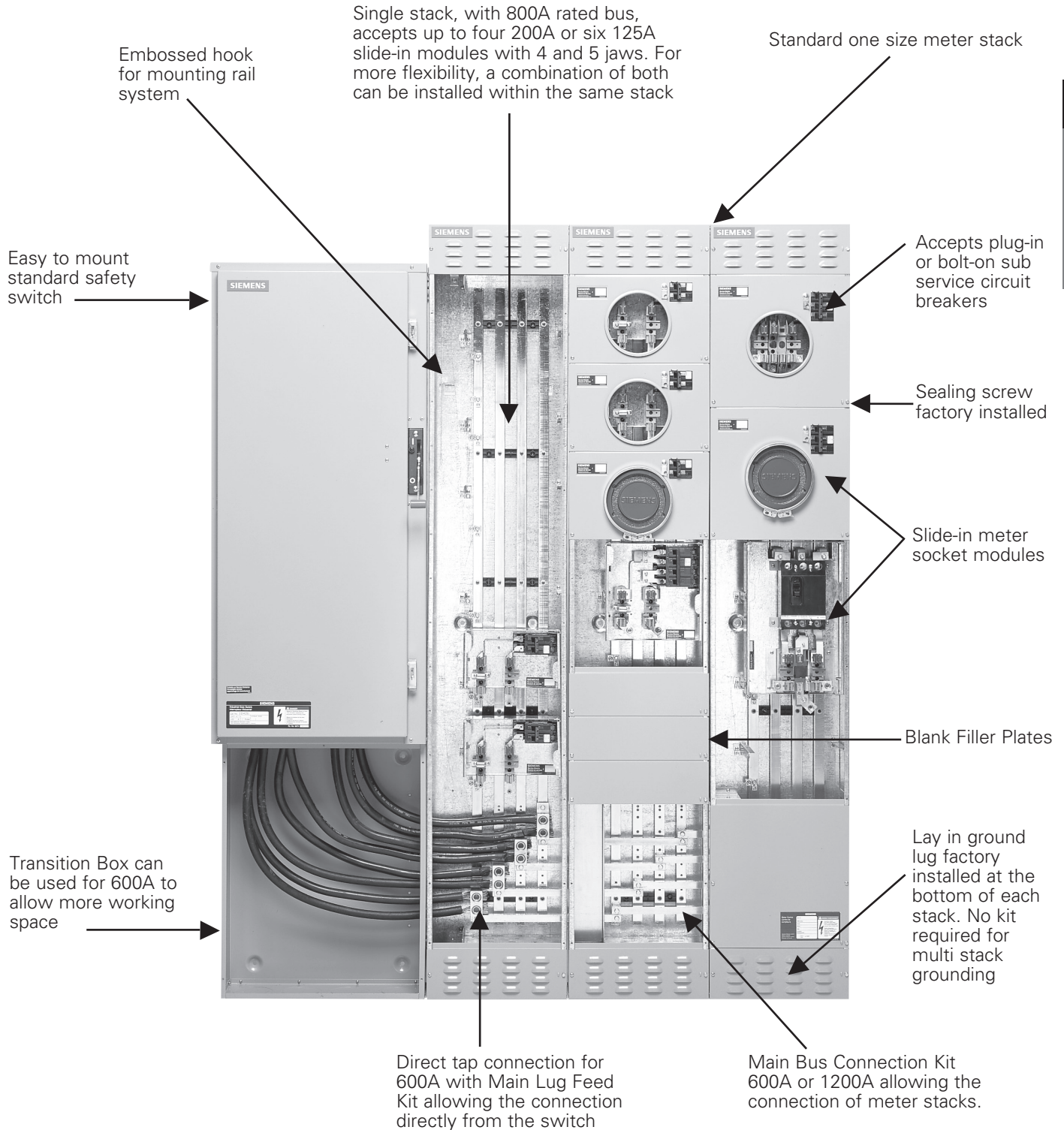
Meter socket jaws consist of tin plated copper with steel spring reinforced clips for reliable contact pressure. Positive alignment of jaws and stabs is assured by bus straps which are bolted in place.



# Modular Meter Centres

## Overview - Features & Benefits

*Selection*



# Modular Meter Centres

## Selection Procedure

*Selection*

1. Select one service entrance safety switch, reference p.2/5.
2. Select required Tap Box or Main Lug Feed Kit with or without a Transition Box.
3. Select type and quantity of slide-in Meter Socket Modules.
4. Select Main Bus Connector Kits to join each stack.
5. Select quantity of Blank Filler Plates as per left over empty space.

METER CENTERS 2

Examples - Typical 600A Main Service 120/240V 1Ø 3W c/w 16 x 100A and 1 x 200 sub-service breakers					
Option 1 c/w Tap Box & Bolt-on Breakers			Option 2 c/w Transition Box & Plug-in Breakers		
QTY	Catalogue Number	Description	QTY	Catalogue Number	Description
1	ID226 or HFC226N	Safety switch 600A 2p 240V	1	ID226 or HFC226N	Safety switch 600A 2p 240V
1	MLTB1-600	Standard Tap Box 600A	1	MTB-600	Transition Box 600A
4	MMS4-125	Meter socket module 125A 4 jaws	1	MLFK1	Main lug kit
1	MMS4-200QJ	Meter socket module 200A 4 jaws QJ	4	MMS4-125	Meter socket module 125A 4 jaws
2	MMC14-6125	Complete stack	1	MMS4-200	Meter socket module 200A 4 jaws
1	MMC1	Basic stack	2	MMC14-6125	Complete stack
2	MBSS1-600	Main bus connector kit	1	MMC1	Basic stack
1	MBHP-2	Blank filler plates	2	MBSS1-600	Main bus connector kit
16	BQ2B100	100A Bolt-on breaker	1	MBHP-2	Blank filler plates
1	QJ2B200	200A Bolt-on breaker	16	Q2100	100A Plug-in breaker
1	MTRK-64	Wall mounting rail	1	EQ9685	200A Plug-in breaker
			1	MTRK-64	Wall mounting rail

### Reference Chart: Number of Blank Filler Plate Kits Required

Refer to this chart to calculate how many Blank Filler Plate Kits are needed in a meter stack after the quantity of Meter Socket Module is determined.			
Catalogue Number	Description	Height in modules (1 module = 8 <sup>7</sup> / <sub>8</sub> " = 125 mm)	Qty of kits #MBHP-2 (2 plates/kit)
MMC1 & MMC3	Basic meter stack	6 modules	6
MMS4-125	Meter socket module 125A 4 jaws	1 module	1
MMS5-125	Meter socket module 125A 5 jaws	1 module	1
MMS4-200	Meter socket module 200A 4 jaws	1.5 modules	2
MMS5-200	Meter socket module 200A 5 jaws	1.5 modules	2
MMS4-200QJ	Meter socket module 200A 4 jaws QJ	1.5 modules	2
MMS5-200QJ	Meter socket module 200A 5 jaws QJ	1.5 modules	2
MMS7-100	Meter socket module 100A 7 jaws	1.5 modules	2
MMS7-200	Meter socket module 200A 7 jaws	3 modules	3

# Modular Meter Centres

## Safety Switch, Tap Box and Main Lug Feed Kit

Selection

### Service Entrance Module<sup>①</sup>

System	Ampere Rating	Catalogue Number	Cable lug size per phase - suitable for Al. and Cu.	Dimensions - Inches (mm)			Weight - lbs.(kg)
				H	W	D	
120/240 1Ø 3W	400	ID225	Line, Load: (1) 1/0 AWG - 750 Kcmil or (2) 1/0 AWG - 250 Kcmil Neutral: (1) 1/0 AWG - 750 Kcmil or (2) 1/0 AWG - 250 Kcmil	40 (1016)	18 <sup>1/2</sup> (470)	12 <sup>1/16</sup> (306)	78 (35.4)
	600	ID226		48 (1219)	21 <sup>1/2</sup> (546)	12 <sup>1/16</sup> (306)	92 (41.7)
	800	HFC227N	Line, Load: (1) 1/0 AWG - 750 Kcmil Neutral: (2) 1/0 AWG - 750 Kcmil	67 <sup>3/16</sup> (1706)	39 <sup>15/16</sup> (1015)	9 <sup>1/4</sup> (235)	365 (65.6)
	1200	HFC228N		67 <sup>3/16</sup> (1706)	39 <sup>15/16</sup> (1015)	9 <sup>1/4</sup> (235)	385 (174.6)
120/208 3Ø 4W	400	ID425	Line, Load: (1) 1/0 AWG - 750 Kcmil or (2) 1/0 AWG - 250 Kcmil Neutral: (1) 1/0 AWG - 750 Kcmil or (2) 1/0 AWG - 250 Kcmil	40 (1016)	18 <sup>1/2</sup> (470)	12 <sup>1/16</sup> (306)	92 (41.7)
	600	ID426		48 (1219)	21 <sup>1/2</sup> (546)	12 <sup>1/16</sup> (306)	108 (49)
	800	HFC367N	Line, Load: (1) 1/0 AWG - 750 Kcmil Neutral: (2) 1/0 AWG - 750 Kcmil	67 <sup>3/16</sup> (1706)	39 <sup>15/16</sup> (1015)	9 <sup>1/4</sup> (235)	375 (170.1)
	1200	HFC368N		67 <sup>3/16</sup> (1706)	39 <sup>15/16</sup> (1015)	9 <sup>1/4</sup> (235)	395 (179.1)

### Standard Tap Boxes<sup>②</sup> - connector included

System	Ampere Rating	Catalogue Number	Cable lug size per phase - suitable for Al. and Cu cables	Dimensions - Inches (mm)			Weight - lbs.(kg) <sup>③</sup>
				H	W	D	
120/240 1Ø 3W	400/600	MLTB1-600	(3) #2 AWG - 600 Kcmil or (4) 1/0 AWG - 750 Kcmil	25 <sup>3/4</sup> (655)	20 <sup>1/2</sup> (521)	7 <sup>1/4</sup> (184)	40 (18.2)
	800/1200	MLTB1-1200 <sup>④</sup>		25 <sup>3/4</sup> (655)	20 <sup>1/2</sup> (521)	7 <sup>1/4</sup> (184)	45 (20.5)
120/208 3Ø 4W	400/600	MLTB3-600	(3) #2 AWG - 600 Kcmil or (4) 1/0 AWG - 750 Kcmil	25 <sup>3/4</sup> (655)	20 <sup>1/2</sup> (521)	7 <sup>1/4</sup> (184)	40 (18.2)
	800/1200	MLTB3-1200 <sup>④</sup>		25 <sup>3/4</sup> (655)	20 <sup>1/2</sup> (521)	7 <sup>1/4</sup> (184)	45 (20.5)

### Feed Through Tap Boxes<sup>⑤</sup> - Use with even number of meter stacks only

120/240 1Ø 3W	400/600	MLTB1-600FT	(4) 250 Kcmil - 750 Kcmil or (8) 3/0 AWG - 250 Kcmil	25 <sup>3/4</sup> (655)	20 <sup>1/2</sup> (521)	7 <sup>1/4</sup> (184)	45 (20.5)
	800/1200	MLTB1-1200FT <sup>⑥</sup>		46 <sup>1/4</sup> (1175)	24 (610)	7 <sup>1/4</sup> (184)	60 (27.3)
120/208 3Ø 4W	400/600	MLTB3-600FT	(4) 250 Kcmil - 750 Kcmil or (8) 3/0 AWG - 250 Kcmil	25 <sup>3/4</sup> (655)	20 <sup>1/2</sup> (521)	7 <sup>1/4</sup> (184)	45 (20.5)
	800/1200	MLTB3-1200FT <sup>⑥</sup>		46 <sup>1/4</sup> (1175)	24 (610)	7 <sup>1/4</sup> (184)	60 (27.3)

### Main Lug Feed Kit - For direct tap (no tap box) from safety switch to metering stack

System	Ampere Rating	Catalogue Number	Cable lug size per phase - suitable for Al. and Cu cables	Use with Meter Module Type	Weight - lbs.(kg)
120/240 1Ø 3W	400/600	MLFK1	(2) 1/0 AWG - 750 Kcmil or (4) 1/0 AWG - 250 Kcmil	MMC1 MMC14-6125	2 <sup>1/2</sup> (1.1)
120/208 3Ø 4W	400/600	MLFK3	(2) 1/0 AWG - 750 Kcmil or (4) 1/0 AWG - 250Kcmil	MMC3 MM35-6125	3 (1.3)

### Transition Box - Allows more working space to connect on Main Lug Feed Kit

System	Ampere Rating	Catalogue Number	Dimensions - Inches (mm)			Weight - lbs.(kg)
			H	W	D	
120/240 1Ø 3W	400/600	MTB-600	25 <sup>3/4</sup>	20 <sup>1/2</sup>	7 <sup>1/4</sup>	30 (13.7)
120/208 3Ø 4W			(655)	(521)	(184)	

① Fusible switch can be mounted directly next to metering stack with a Standard Tap Box or with a Main Lug Feed Kit (with or without Transition Box).

② Tap Box mounts directly next to the Meter Stack and is required to accommodate incoming main service cable, unless Main Lug Feed Kit is used. Suitable for left and right side entry.

③ Can be used with even and odd number of metering stacks. In addition, for odd number of stack connections, adaptor kit #MTBK12 must be used.

④ Weight is based on 3Ø 4W system (Heaviest pcs).

⑤ Feed through tap boxes are required when the main incoming cables enter and exit at the same end of line up.

⑥ Module comes factory assembled for left hand side entry. For right hand side entry, bus bars and insulated supports must be moved at the other hole set, marked with an "R", before wall installation.

# Modular Meter Centres

## Meter Centre Stack, Meter Socket Module and Main Bus Connectors

*Selection*

**Basic Meter Stack (cold metering)** - Meter socket modules and blank plates must be ordered separately

Main Service Voltage	Sub-service Voltage	Catalogue Number	Max. Sub-service Meter Socket for each amperage <sup>①</sup>			Dimensions - Inches (mm)			Height - MOD	Weight - lbs.(kg)
			100A	125A	200A	H	W	D		
120/240 1Ø3W	120/240 1Ø3W	MMC1	N/A	6	4	78 (1981)	14 (356)	7 1/4 (184)	6	67 (30.4)
120/208 1Ø3W	120/208 1Ø3W	MMC3	N/A	6	4					7 (31.8)
120/208 3Ø4W	120/208 3Ø3W	MMC3	4	N/A	2					

**Complete Meter Stack (cold metering)**<sup>①②</sup> - Meter socket modules included

Main Service Voltage	Sub-service Voltage	Catalogue Number	Number of Jaws	Sub-service Meter Socket included	Dimensions - Inches (mm)			Height - MOD	Weight - lbs.(kg)
					H	W	D		
120/240 1Ø3W	120/240 1Ø3W	MMC14-6125	4	6 x MMS4-125	78 (1981)	14 (356)	7 1/4 (184)	6	109 (49.6)
120/208 1Ø3W	120/208 1Ø3W	MMC35-6125	5	6 x MMS5-125					112 (50.9)

**Meter Socket Module**<sup>①</sup>

Sub-service Voltage	Meter Socket Rating	Catalogue Number	Number of Jaws	Provision Breaker type	Phase Connection	Height		Weight - lbs.(kg)
						in. (mm)	MOD	
120/240 1Ø3W	125A	MMS4-125	4	BQ, BQH, HBQ, Q, QP, QPH, HQP	AB	8 7/8 (225)	1	7 (3.2)
120/240 1Ø3W	200A	MMS4-200	4	EQ96XX	AB	13 5/16 (338)	1.5	11 (5)
		MMS4-200QJ	4	QJ2, QJH2, QJ2H, HQJ2H				
120/208 3Ø4W	125A	MMS5-125	5 <sup>③</sup>	BQ, BQH, HBQ, Q, QP, QPH, HQP	AB <sup>④</sup>	8 7/8 (225)	1	7 (3.2)
120/208 3Ø4W	200A	MMS5-200	5 <sup>③</sup>	EQ96XX	AB <sup>④</sup>	13 5/16 (338)	1.5	11 (5)
		MMS5-200QJ	5 <sup>③</sup>	QJ2, QJH2, QJ2H, HQJ2H				
120/208 3Ø4W	100A	MMS7-100	7 <sup>③</sup>	BQ, BQH, HBQ, Q, QP, QPH, HQP	ABC	13 5/16 (338)	1.5	10 (4.6)
120/208 3Ø4W	200A	MMS7-200	7 <sup>③</sup>	QJ2, QJH2, QJ2H, HQJ2H		26 5/8 (676)	3	16 (7.3)

**Main Bus Connector Kit** - Allows the connection of two meter stacks

Sub-service Voltage	Ampere Rating	Catalogue Number	Use with Meter Module Type	Weight - lbs.(kg)
120/240 1Ø3W	600A	MBSS1-600	MMC1	3 (1.3)
	1200A	MBSS1-1200	MMC14-6125	7 (3.18)
120/208 3Ø4W	600A	MBSS3-600	MMC3	4 (1.82)
	1200A	MBSS3-1200	MM35-6125	10 (4.55)

① Provision only, breakers not included

② Complete meter stacks are factory balanced for ease of installation

③ Meter socket modules with 5 and 7 jaws can be assembled in the same meter stack as long as the system is balanced.

④ MMS5-125 and MMS5-200 have AB phase connections by default. Phasing connections can be changed on the field to AC or BC to balance the load on the system.

# Modular Meter Centres

## Sub-service Circuit Breakers and Corner Elbow Modules

*Selection*

Sub-service Circuit Breakers - Maximum interruption rating (KAIC) for 240V AC

Ampere Rating	Poles	Catalogue Number									
		KAIC = 10kA		KAIC = 22kA		KAIC = 42kA	KAIC = 65kA		KAIC = 100kA		
		Plug-in	Bolt-on	Plug-in	Bolt-on	Bolt-on only	Plug-in	Bolt-on	Bolt-on only		
60A	2	Q260	BQ2B060	Q260H	BQ2B060H	QJ22B060H	Q260HH	HB2B060	N/A		
	3	Q360	BQ3B060	Q360H	BQ3B060H	QJ23B060H	Q360HH	HB3B060			
70A	2	Q270	BQ2B070	Q270H	BQ2B070H	QJ22B070H	Q270HH	HB2B070			
	3	Q370	BQ3B070	Q370H	BQ3B070H	QJ23B070H	Q370HH	HB3B070			
80A	2	Q280	BQ2B080	Q280H	BQ2B080H	QJ22B080H	Q280HH	HB2B080			
	3	Q380	BQ3B080	Q380H	BQ3B080H	QJ23B080H	Q380HH	HB3B080			
90A	2	Q290	BQ2B090	Q290H	BQ2B090H	QJ22B090H	Q290HH	HB2B090			
	3	Q390	BQ3B090	Q390H	BQ3B090H	QJ23B090H	Q390HH	HB3B090			
100A	2	Q2100	BQ2B100	Q2100H or EQ9675	BQ2B100H	QJ22B100H	Q2100HH	HB2B100		N/A	
	3	Q3100	BQ3B100	Q3100H	BQ3B100H	QJ23B100H	Q3100HH	HB3B100		HQJ23B100H	
110A	2	Q2110	BQ2B110	Q2110H	BQ2B110H	QJ22B110H	Q2110HH	HB2B110	N/A		
	3	Q3110	QJ23B110	Q3110H	QJH23B110	QJ23B110H	Q3110HH	N/A	HQJ23B110H		
125A	2	Q2125	BQ2B110	Q2125H or EQ9677	BQ2B125H	QJ22B125H	Q2125HH	HB2B125	N/A		
	3	N/A	QJ23B125	N/A	QJH23B125	QJ23B125H	N/A	N/A	HQJ23B125H		
150A	2	EQ9683	QJ22B150	EQ9683	QJH22B150	QJ22B150H	N/A	N/A	N/A		
	3	N/A	QJ23B150	N/A	QJH23B150	QJ23B150H			HQJ23B150H		
175A	2	N/A	QJ22B175	EQ9684	QJH22B175	QJ22B175H			N/A	N/A	N/A
	3		QJ23B175	N/A	QJH23B175	QJ23B175H					HQJ23B175H
200A	2	EQ9685	QJ22B200	EQ9685	QJH22B200	QJ22B200H	N/A	N/A			N/A
	3	N/A	QJ23B200	N/A	QJH23B200	QJ23B200H			HQJ23B200H		

Note: Low amperage circuit breakers (15-50A) available with installation of connector kit #MSMK-50

Corner Elbow Modules - Permit continuation from stack to stack around corners

System Voltage	Ampere Rating	Catalogue Number	Dimensions - Inches (mm)			Weight - lbs.(kg)
			H	W	D	

### Inside Elbow Modules

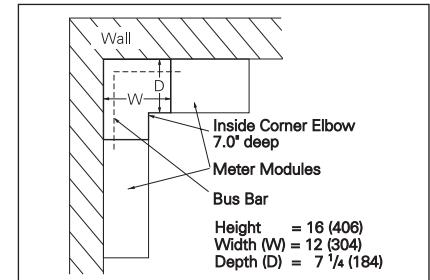
120/240 1Ø3W	600	MEL1-IN-6	16 (406)	12 (304)	7 1/4 (184)	45 (20)
	1200	MEL1-IN-12				
120/208 3Ø4W	600	MEL3-IN-6				50 (23)
	1200	MEL3-IN-12				

### Outside Elbow Modules

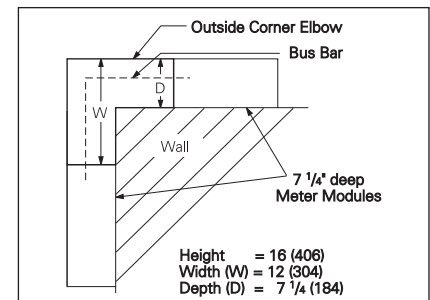
120/240 1Ø3W	600	MEL1-OUT-6	16 (406)	12 (304)	7 1/4 (184)	45 (20)
	1200	MEL1-OUT-12				
120/208 3Ø4W	600	MEL3-OUT-6				50 (23)
	1200	MEL3-OUT-12				

Note: To connect a Tap Box to an Elbow, order MTBELK6 or MTBELK12. Connection from feed-through tap box 1200A to an elbow is not possible.

### Inside



### Outside



# Modular Meter Centres

## Accessories

*Selection*

Catalogue Number	Description	Content
MBHP-2	Blank meter socket filler plate required to cover empty space, each steel plate has a dimension of 4.3 x 14.1 in.	2 half plates (1 MOD = 1 x MBHP-2)
MLTB-L2750	Alternative lug kit for 600A standard tap boxes	4 lugs 1/0 AWG - 750 Kcmil Al/Cu
MTBK12	Connection adaptor kit for tap box MLTB1-1200 or MLTB3-1200 when used for output with an odd number of meter stacks	4 connector spacers and hardware
MTRK-64	Wall mounting rail of 64 in., meter stack is supplied with embossed hooks for this mounting rail system	1 wall mounting track 64"
MTBELK6	Bus bar kit to connect a 600A standard or feed-through tap box via a 600A corner elbow	4 Bus Bars and hardware
MTBELK12	Bus bar kit to connect a 1200A standard tap box via a 1200A corner elbow	8 Bus bars and hardware
MSSR	Meter sealing ring	1 meter ring
MUJP-5	Jumper bar 200A max, 5 jaws, to jump a metering position when the meter has temporarily been removed	2 jumper bars
MUJP-7	Jumper bar 200A max, 7 jaws, to jump a metering position when the meter has temporarily been removed	3 jumper bars
SEALSC1	Sealing screw kit	25 sealing screws
SFLK-200	Subfeed lug kit 200A max.	4 lugs 6/0 AWG - 300 Kcmil Al/Cu

### Replacement cover for Meter Socket Modules

Catalogue Number	Description	Content
MC4-125	125A 4 & 5-jaw front cover plate Q & BQ breakers	1 cover plate 1 sealing ring 1 sealing screw
MC4-200	200A 4 & 5-jaw front cover plate Q & BQ breakers	
MC4-200QJ	200A 4 & 5-jaw front cover plate QJ breaker	
MC7-100	100A 7-jaw front cover plate Q & BQ breakers	
MC7-200	200A 7-jaw front cover plate QJ breaker	

### Tap Box Modification Kits

Catalogue Number	Description	Content
MLTB-AP	Al. plate punched for standard tap boxes and MLTB 600FT	1 tap box tub end
MLTB-AU	Al. plate unpunched for standard tap boxes and MLTB 600FT	
MLTB-AUFT	Al. plate unpunched for Feed-Through Tap Box 1200A	
MLTB-FP	Fiber plate punched for standard tap boxes and MLTB 600FT	
MLTB-FPFT	Fiber plate punched for Feed-Through Tap Box 1200A	
MLTB-FU	Fiber plate unpunched for standard tap boxes and MLTB 600FT	
MLTB-FUFT	Fiber plate unpunched for Feed-Through Tap Box 1200A	

**Note:** Multi-stack grounding is accomplished by running a bare wire through the factory installed lay-in lugs in the bottom of each stack. No grounding kit is required except when an elbow module is used.



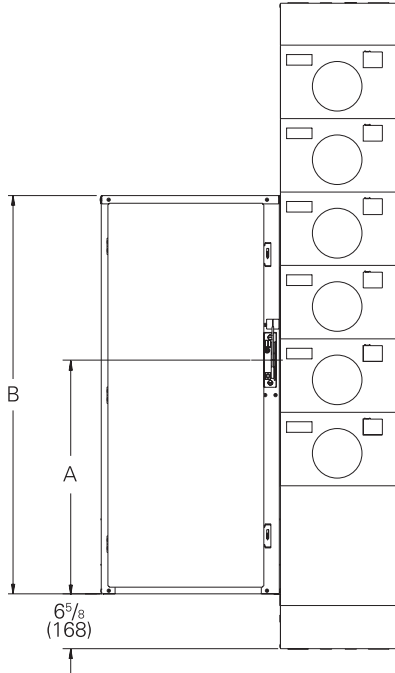
# Modular Meter Centres

## Configuration Data

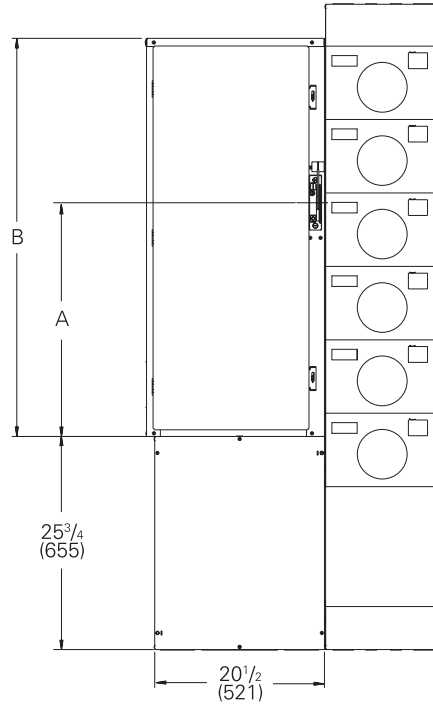
*Selection*

### Configurations with switch

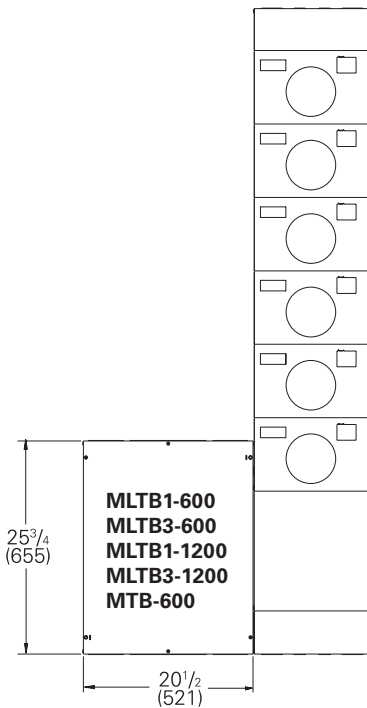
With Switch



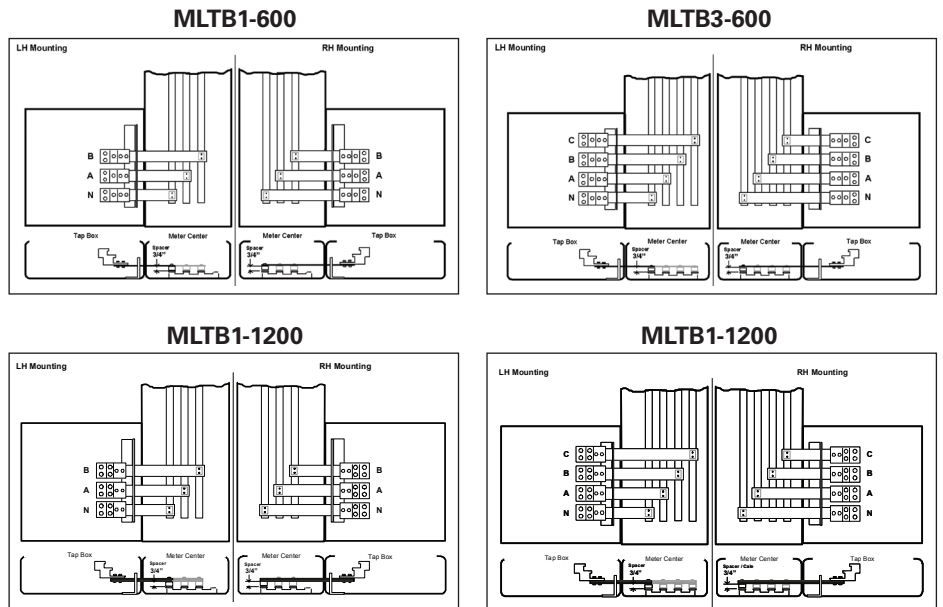
With Transition Box and Switch



### Configurations with Standard Tap Box or Transition Box



### Standard Tap Box connections

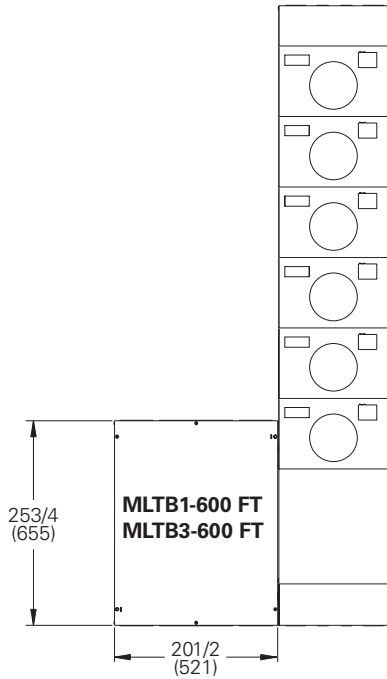


# Modular Meter Centres

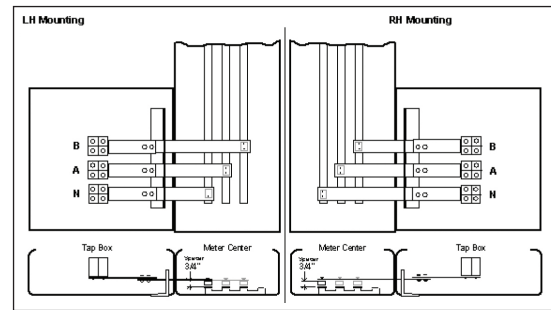
## Configuration Data

*Selection*

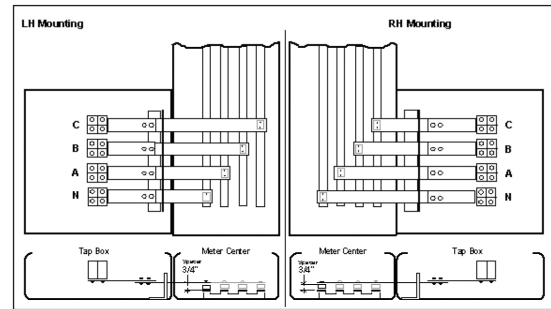
### Configurations with feed through Tap Box 600A



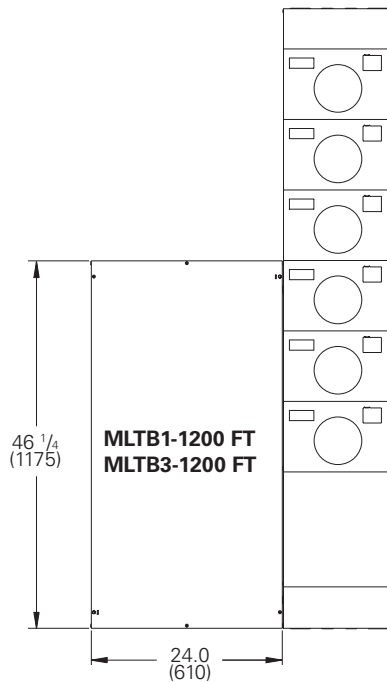
**MLTB1-600FT**



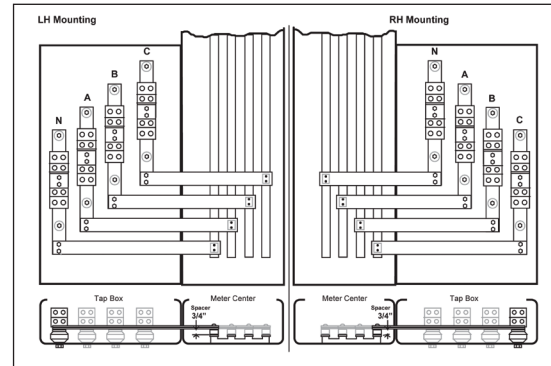
**MLTB3-600FT**



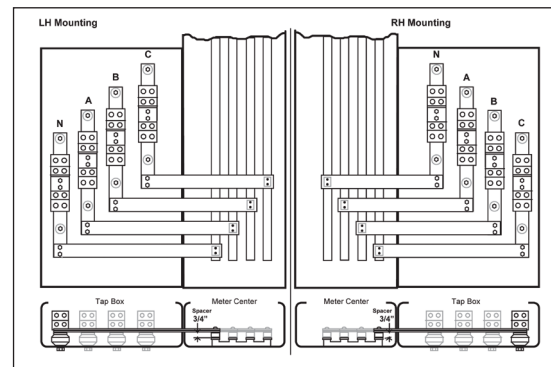
### Configurations with feed through Tap Box 1200A



**MLTB1-1200FT**



**MLTB3-1200FT**



Note: For Feed-Through Tap Box 1200A, standard assembly is for left hand mounting. For right hand mounting, bus bar and insulated support must be moved at the other hole set (marked with an "R") before wall installation.

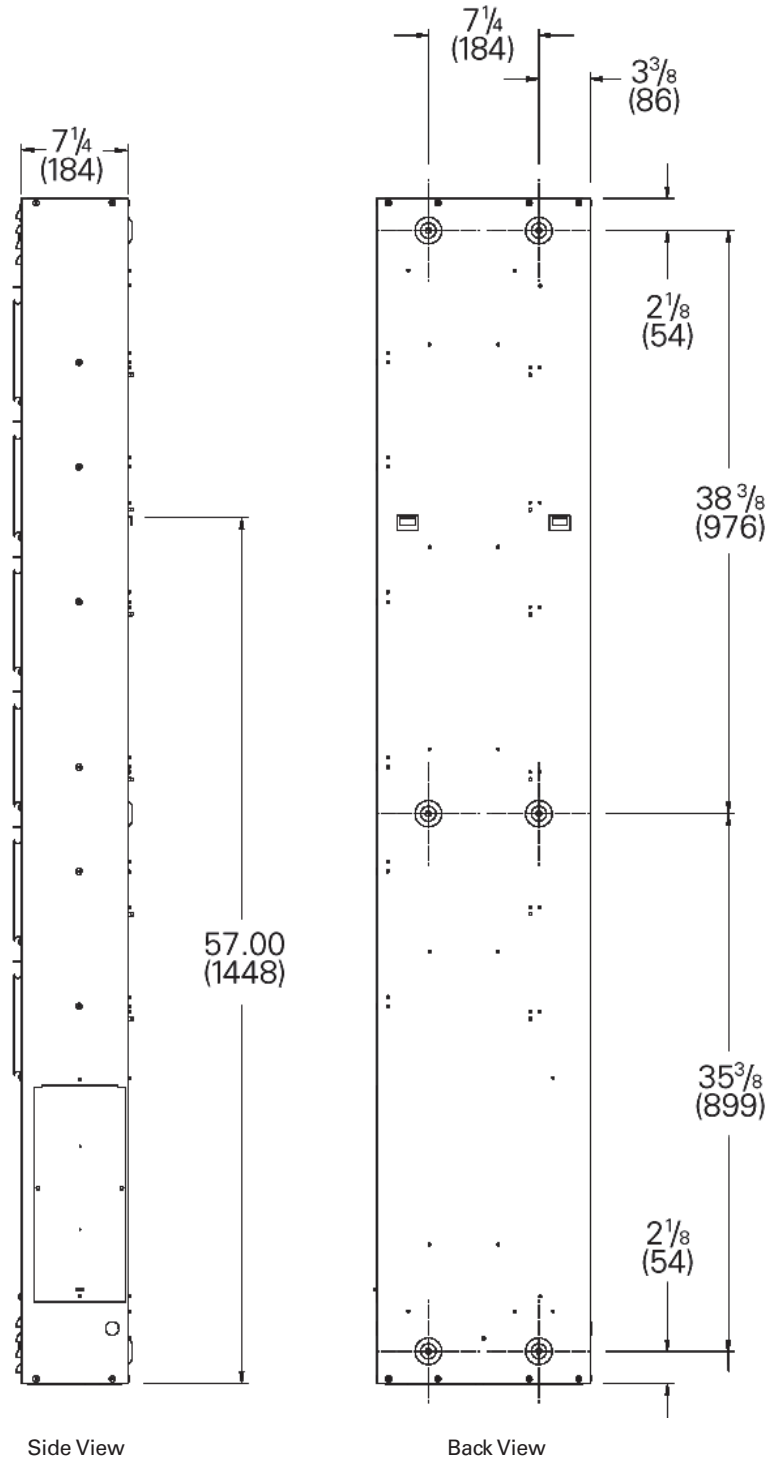
# Modular Meter Centres

## Dimensions

*Selection*

Meter Stack Mounting Dimensions - Inches (mm)

MMC1  
MMC3



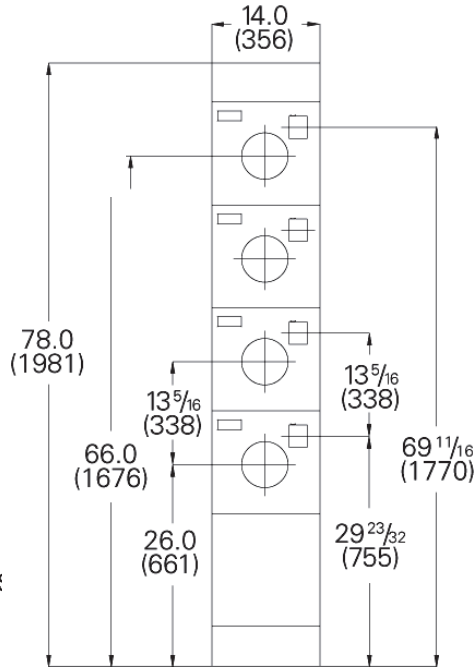
# Modular Meter Centres

## Dimensions

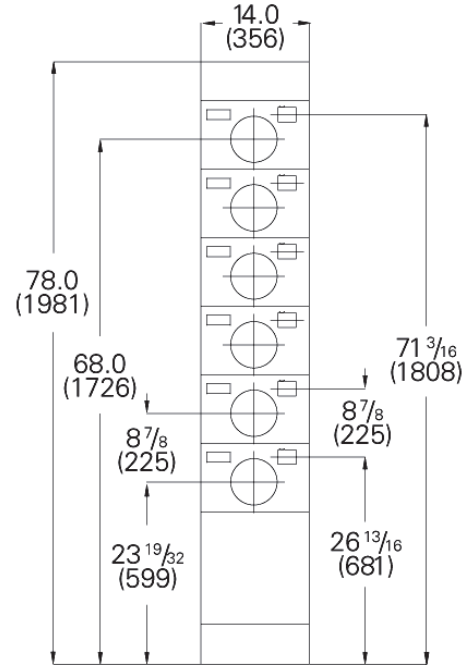
*Selection*

### Meter Modules Dimensions - Inches (mm)

Meter Socket Module:  
**MMS7-100**

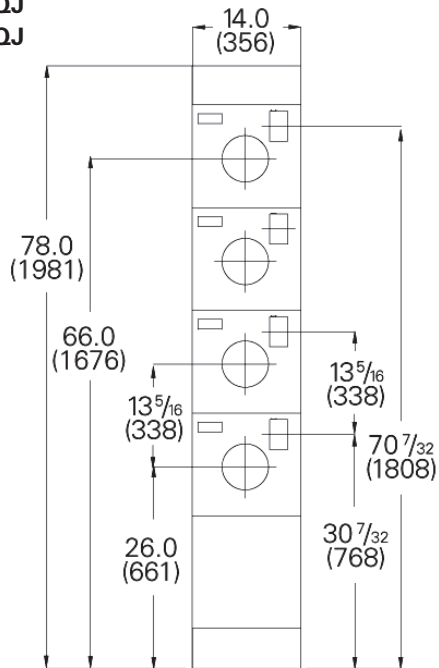


Meter Socket Modules:  
**MMS4-125**  
**MMS5-125**

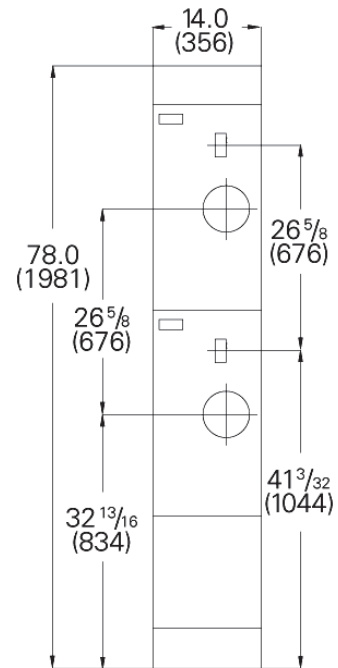


Meter Socket Modules:

**MMS4-200**  
**MMS5-200**  
**MMS4-200QJ**  
**MMS5-200QJ**



Meter Socket Module:  
**MMS7-200**



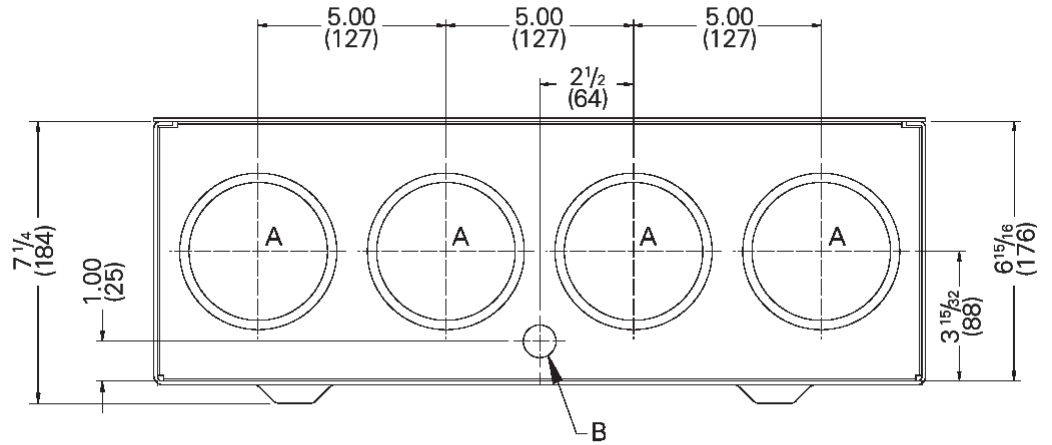
# Modular Meter Centres

## Knock Out Data

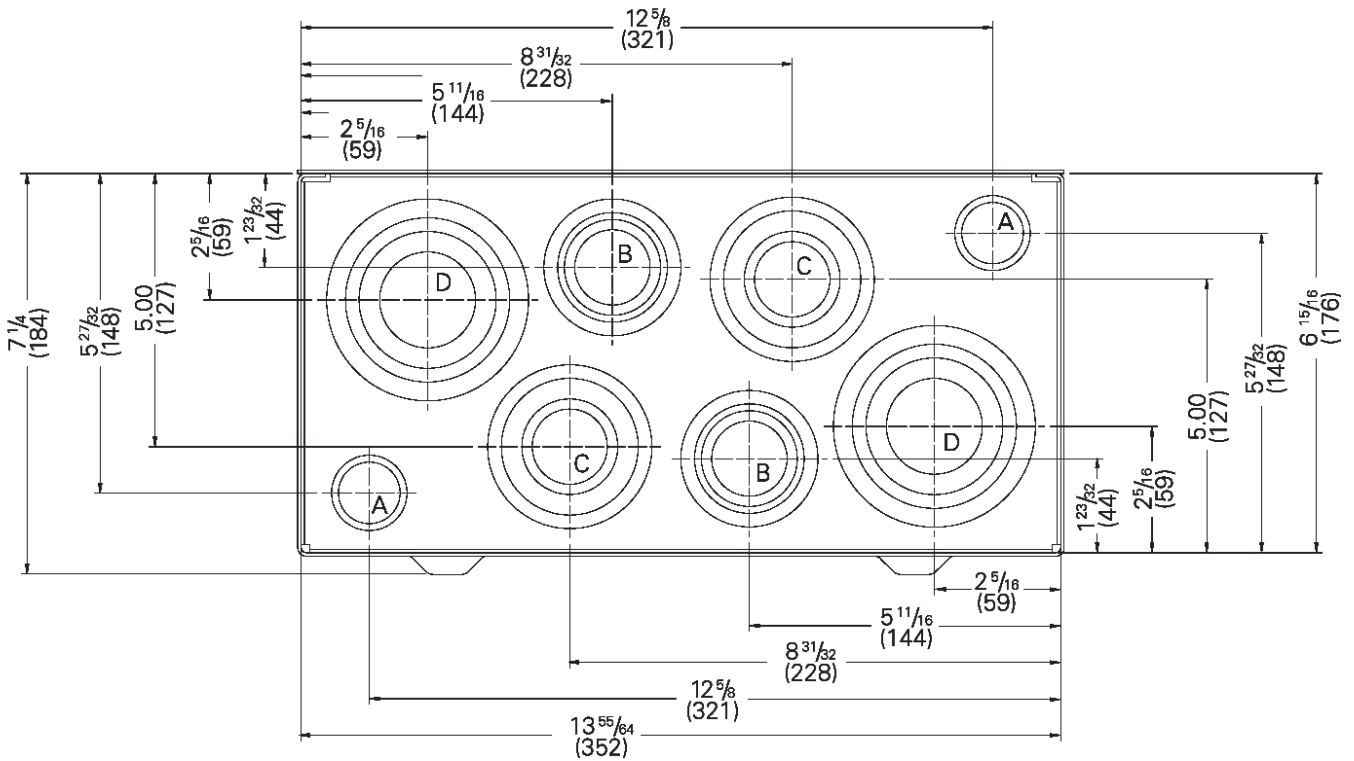
*Selection*

Tube end for Tap Boxes - Inches (mm)

B	1 <sup>1</sup> / <sub>4</sub> - 1 <sup>1</sup> / <sub>2</sub> - 2
A	3 - 3 <sup>1</sup> / <sub>2</sub>
Ref.	K.O. Trade Size



Top tub end for Meter Stack - Inches (mm)



1 <sup>1</sup> / <sub>4</sub> - 2 - 2 <sup>1</sup> / <sub>2</sub> - 3	D
1 - 1 <sup>1</sup> / <sub>4</sub> - 2 - 2 <sup>1</sup> / <sub>2</sub>	C
1 - 1 <sup>1</sup> / <sub>4</sub> - 1 <sup>1</sup> / <sub>2</sub> - 2	B
3/4 - 1	A
K.O. Trade Size	Ref.

2  
METER  
CENTERS

# Modular Meter Centres

## Layout Example

*Reference*

Meter Centre layout example - Reference only

System: 120/240V 1Ph 3W, 10 KA

**Dimension of each stack:**

**Height:** 78" (1981mm)

**Width:** 14" (356mm)

**Depth:** 7 1/4" (184mm)

**Height of the modules:** ( 24 Modules)

**125A Module:** 8 7/8" (225.5mm)

**Overall Width:** 76 1/2" (1945mm)

METER CENTERS 2

