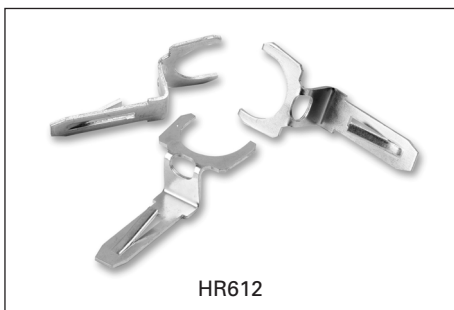


# General and Heavy Duty Safety Switches Accessories

## Selection



HR612

### Class R Fuse Clip Kits

All General Duty and Heavy Duty Switches are field convertible to accept Class R Fuse Clip Kits. The kits prevent the installation of Class H and K fuses (one kit required per switch).

### Class R Fuse Clip Kits<sup>①</sup>

Catalog Number	List Price \$	Description
GSRK321		30A, 240V Kit (GD only)
HR21		30A, 240V Kit (HD only)
HR612		30A, 600V Kit/60A, 240V Kit
HR62		60A, 600V Kit
HR63		100A Kit
HR64		200A Kit
HR656		400A/600A Kit

### Class J Fuse

All 30-600A, 600V fusible Heavy Duty Switches are field convertible to accept Class J fuses by moving the load base to a pre-drilled J fuse position. All 200-600A, 240V fusible General Duty and Heavy Duty switches can also be field converted to accept Class J fuses.



HT63

### Class T Fuse Adapter Kits

All 200-600A, General Duty and 100-1200A Heavy Duty Switches are field convertible to accept Class T fuses. 400-600A switches are field convertible to accept Class T fuses by moving the load base to a pre-drilled T fuse position.

### Class T Fuse Adapter Kits<sup>①</sup>

Catalog Number	List Price \$	Description
HT23		100A, 240V Kit
HT63		100A, 600V Kit
HT24		200A, 240V Kit
HT64▲		200A, 600V Kit
TFAK72		800A, 240V Kit
TFAK75		800A, 600V Kit
TFAK82		1200A, 240V Kit

### Neutral Kits

Standard Neutral Kits can be field installed in General and Heavy Duty Switches.

### Neutral Kits<sup>②</sup>

Switch Ampere Rating	Kit Catalog Number	List Price \$
30 GD	W410190	
30 HD, 60 GD	HN612	
60, 100 HD, 100 GD	HN623	
200	HN64	
400 & 600	HN656	
800 & 1200 VBII	HN678	



HN612

HN264

### 200% Neutral Kits

UL listed 200% Neutrals are available on 100-600A Heavy Duty Switches. They are typically used with non-linear transformers or where increased neutral ampacity/lug capacity is required.

### 200% Neutral Kits<sup>③</sup>

Switch Ampere Rating	Kit Catalog Number	List Price \$	Wire Range Line & Load Lugs (Cu/Al)
100	HN263		(2) #14-1/0 AWG
200	HN264		(2) #6 AWG-300 Kcmil
400	HN656		(2) 1/0 AWG-750 Kcmil or (4) 1/0 AWG-250 Kcmil
600	HN678		(4) 1/0 AWG-750 Kcmil

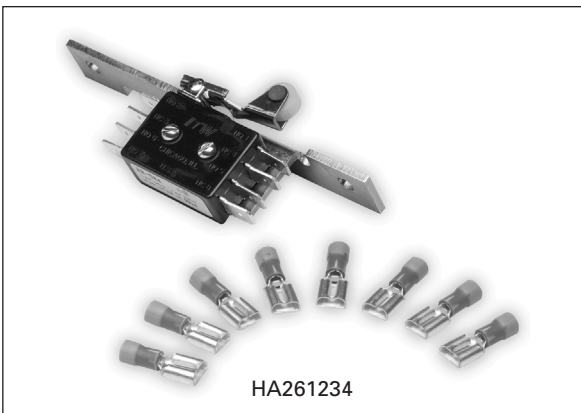
▲ Built to order. Allow 6-8 weeks for delivery.

① One kit per pole required.

② Applies to Visible Blade Type VBII Switches only.

③ For Visible Blade Type VBII Switches only.

## Selection



### Auxiliary Contacts

Auxiliary Contacts are available only for Heavy Duty Switches. The auxiliary contacts are available in 1 normally open and 1 normally closed or 2 normally open and 2 normally closed configurations. Siemens offers a PLC Auxiliary Switch (30-200A) that has very low resistance for low voltage and current typical in PLC circuits. All auxiliary contacts make after and break before main switch contacts.

### Auxiliary Contacts<sup>Ⓞ</sup>

Switch Ampere Rating	Aux. Switch Catalog Number	List Price \$	Kit Ampere Rating			Kit Horsepower Rating		
			125V AC Max.	250V AC Max.	28V DC Max.	125V AC Max.	250V AC Max.	28V DC Max.

#### With 1 NO & 1 NC Isolated Contacts

30-200	HA161234		10	10	—	1/2	3/4	—
400-1200	HA165678		10	10	—	1/2	3/4	—

#### With 2 NO & 2 NC Isolated Contacts

30-200	HA261234		10	10	7	1/2	3/4	—
400-1200	HA265678		10	10	7	1/2	3/4	—

#### Low Current PLC Type with 1 NO & 1 NC Gold Plated Contacts

30-200	HA361234		10	10	—	1/2	3/4	—
400-1200	HA365678		10	10	—	1/2	3/4	—



### Fuse Puller Kits

Fuse Puller Kits are field installable in 30-100A Type VBII Heavy Duty Switches (one kit required per switch).

### Fuse Puller Kits<sup>Ⓞ</sup>

Switch Ampere Rating	Fuse Puller Kit Catalog Number	List Price \$
30	HP61	
60	HP62▲	
100	HP63▲	

▲ Built to order. Allow 6-8 weeks for delivery.

Ⓞ Applies to Visible Blade Type VBII Switches only.

**Note:** For touch-up spray paint (16 oz. can) order catalog number XTP060.

# General and Heavy Duty Safety Switches Accessories

## Selection

### Copper Lug Kits

Heavy duty switches are UL approved to accept field installed copper lug kits.

#### Copper Lug Kits<sup>Ⓢ</sup>

Switch Ampere Rating	Copper Lug Catalog Number	List Price \$	Description
30-60	HLC612		(9) Lugs/Kit #14-6 AWG Cu
100	HLC63▲		(9) Lugs/Kit #14-1/0 AWG Cu
200	HLC64▲		(9) Lugs/Kit #6 AWG-300 Kcmil Cu
400-1200	HLC65678		(1) Lugs/Kit #1/0 AWG-600 Kcmil Cu

### Equipment Ground Kits

Equipment Ground Lug Kits are available for all General and Heavy Duty Switches. They are field installable in Type 1 and Type 3R Switches and are factory installed as standard in Type 4 / 4X and Type 12 Switches.

#### Equipment Ground Kits<sup>Ⓢ</sup>

Switch Ampere Rating	Catalog Number	List Price \$	Number of Terminals	Wire Range Per Terminal (Cu/Al)
30A GD	GSGK60		2	#14-8 AWG
60-200 GD	HG61234		2	#14-4 AWG
30-200 HD	HG61234		2	#14-4 AWG
400 & 600	HG656		4	#6 AWG-250 Kcmil
800-1200	HG678		8	#6 AWG-250 Kcmil

### Isolated Ground Kits

Isolated Ground Kits are available on 30-600A Heavy Duty Switches. They are normally used on circuits with a high content of computer or other electronic loading which require a ground which is isolated from the building ground and neutral circuits. The kit includes both isolated and grounded terminals as listed below.

#### Isolated Ground Kits<sup>Ⓢ</sup>

Switch Ampere Rating	Catalog Number	List Price \$	Number of Terminals		Wire Range Per Terminal (Cu/Al)
			Isolated	Grounded	
30-200	HG261234		2	2	#14-4 AWG
400-600	HG2656		4	4	#14-2/0

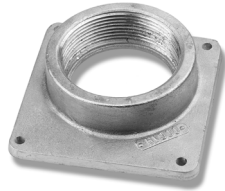


▲ Built to order. Allow 6-8 weeks for delivery.

Ⓢ For Visible Blade Type VBII Switches only.



SSH150



HV300



HS200



SL0420

### Interchangeable Hubs

Conduit hubs are available for Type 3R, 12 and 4 / 4X applications. 30-200A Type 3R Switches are provided with a conduit hub provision and a removable hub plate on their top rainshed.

### Hubs

Conduit Size (inches)	Catalog Number	List Price \$	Used On
-----------------------	----------------	---------------	---------

#### Type 3R<sup>①</sup>

3/4	HA075S		30A GD Only
1	HA100S		
1 1/4	HA125S		
Cover	HS000		60-200A GD 30-200A HD
3/4	HS075		
1	HS100		
1 1/4	HS125		
1 1/2	HS150		
2	HS200		
2 1/2	HS250		
2 1/2	HV250		
3	HV300		400-1200A
3 1/2	HV350		
4	HV400		

#### Type 4 / 4X<sup>②</sup>

3/4	SSH075		30-200A
1	SSH100		
1 1/4	SSH125		
1 1/2	SSH150		
2	SSH200		

**Note:** 30 thru 200A. Type 3R Switches have removable hub plates on rainshed. 400A and larger Type 3R Switches have no provisions for mounting hubs. Drill or punch hole in the field to accommodate hub size desired.

■ Built to order. Allow 2-3 weeks for delivery.

① Hubs suitable for 3R Switches.

② Also suitable for Type 12 applications.

③ Neutral Barrier kits are required on 30-100A switch only and only with 1-Phase / 3W or 3-Phase / 4W loads. Compression Lugs mounting kits are required on 400-1200A switches only.

### Compression Lug Mounting & Neutral Barrier Kit

All Heavy Duty Switches are field convertible for (Crimp) type lugs. When compression lugs are required for 30-100A switches, a neutral barrier kit is required for 1-Phase, 3W or 3-Phase, 4W applications. When compression lugs are required on 400-1200A switches, lug mounting kits are required.

### Compression Lug Mounting<sup>③</sup> and Neutral Barrier Kits

Switch Ampere Rating	Catalog Number	List Price \$	Kit Description
30	HCL612		Neutral Barrier Kit
60 & 100	HCL623		Neutral Barrier Kit
400 <sup>④</sup>	HCL65		1 Pole, Compression Lug Mounting Kit
400 & 600 <sup>⑤</sup>	HCL65678		1 Pole, Compression Lug Mounting Kit
800 & 1200 <sup>⑥</sup>	HCL65678		1 Pole, Compression Lug Mounting Kit

### Wire Grips (Lugs)

30 & 60A Switches are suitable for use with 60° or 75°C wire. 100-1200A are suitable for use with 75°C rated wire.

### Wire Ranges (Line, Load and Standard Neutral)

Switch Ampere Rating	Wire Range with Wire Bending Space Per NEC Table 373-6	Wire Grip Range
30GD	#14-8 AWG (Cu/Al) <sup>⑦</sup>	#14-8 AWG (Cu/Al)
30HD	#14-6 AWG (Cu/Al)	#14-2 AWG (Cu/Al)
60	#14-3 AWG (Cu/Al) <sup>⑧</sup>	#14-2 AWG (Cu/Al)
100	#14-1/0 AWG (Cu/Al)	#14-1/0 AWG (Cu/Al)
200	#6 AWG-300 Kcmil (Cu/Al)	#6 AWG-300 Kcmil (Cu/Al)
400 <sup>⑨</sup>	1/0 AWG-750 Kcmil (Cu/Al) or (2) 1/0 AWG-250 Kcmil (Cu/Al)	(1) 1/0 AWG-750 Kcmil (Cu/Al) or (2) 1/0 AWG-250 Kcmil (Cu/Al)
600 <sup>⑩</sup>	(2) 1/0 AWG-750 Kcmil (Cu/Al) or (4) 1/0 -250 Kcmil (Cu/Al)	(2) 1/0 AWG-750 Kcmil (Cu/Al) or (4) 1/0 AWG-250 Kcmil (Cu/Al)
800	(3) 1/0 AWG-750 Kcmil (Cu/Al) Line Load (4) 1/0 AWG-750 Kcmil (Cu/Al) neutral	(3) 1/0 AWG-750 Kcmil (Cu/Al) Line Load (4) 1/0 AWG-750 Kcmil (Cu/Al) neutral
1200	(4) 3/0 AWG-750 Kcmil (Cu/Al) Line Load (4) 1/0 AWG-750 Kcmil (Cu/Al) neutral	(4) 1/0 AWG-750 Kcmil (Cu/Al) Line Load (4) 1/0 AWG-750 Kcmil (Cu/Al) neutral

④ Provides mounting for a single line or load lug.

⑤ Provides mounting for (2) compression lugs per phase on line or load.

⑥ Line lugs are UL approved to accept #14-6 CU/Al cable.

⑦ Max. wire size for height reduced switches is 500 kcmil (Cu/Al).

⑧ All but 60A GD & compact HD NF switches are also UL approved for #2 Cu/Al conductors.