

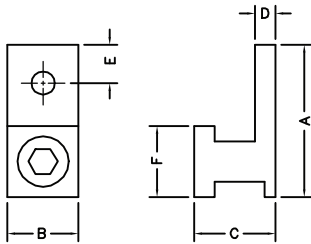
## TYPE TA-I

### Features

- Manufactured from high strength 6061-T6 aluminum alloy
- Electro-tin plated
- CSA Certified and UL Listed
- I-Beam construction
- Rated for 600 volts, 90° C

### Benefits

- Suitable for use with either copper or aluminum conductors
- Provides low contact resistance
- Ensures reliability for copper or aluminum conductors
- Reduces material content while maintaining the same performance standards as full sized connectors
- Ensures reliability



Catalog Number	Wire Range	Mounting Hole Diameter	Dimensions						Hex Size
			A	B	C	D	E	F	
TA-6I	6-14	.203	.82	.437	.44	.062	.21	.325	SLOT
TA-2I	2-14	.265	1.09	.500	.60	.094	.25	.44	SLOT
TA-1/0I	1/0-14	.265	1.125	.531	.66	.156	.25	.60	SLOT
TA-2/0I	2/0-6	.265	1.225	.600	.70	.156	.25	.60	3/16
TA-250I	250 MCM-6	.406	1.875	.875	1.0	.250	.47	.875	5/16
TA-300I	300 MCM-6	.406	1.125	.875	1.13	.293	.500	1.00	5/16
TA-350I	350 MCM-6	.406	2.125	1.00	1.13	.293	.500	1.00	5/16
TA-500I	500 MCM-4	.406	2.375	1.20	1.38	.312	.625	1.125	3/8
TA-600I	600 MCM-2	.562	2.613	1.35	1.50	.423	.69	1.20	1/2
TA-800I	800 MCM-300 MCM	.660	3.04	1.58	1.75	.468	.82	1.40	1/2
TA-1000I	1000 MCM-350 MCM	.660	3.25	1.69	1.88	.500	.88	1.50	9/16

DE-OX Inhibitor is recommended for all aluminum terminations.

