

TYPE GBL

Features

- Manufactured from high strength 6061-T6 aluminum alloy
- Electro-tin plated
- Lay-in feature

Benefits

- Suitable for use with copper or aluminum conductors
- Provides low contact resistance
- Provides ease of installation

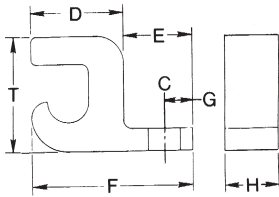


Fig. 1

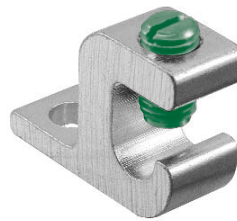


Fig. 2

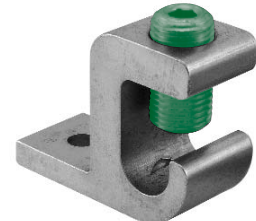


Fig. 3

Catalog Number	Figure Number	Ground Wire Range	Bolt Size	Dimensions							Hex Size
				C	D	E	F	G	H	T	
* GBL-4	1	4-14	10	7/32	5/8	31/64	1-3/32	13/64	25/64	51/64	Slot
+ ‡ GBL-4SS	2	4-14	10	7/32	5/8	31/64	1-3/32	13/64	25/64	51/64	Slot
GBL-1/0	2	1/0-14	1/4	9/32	51/64	27/32	1-5/8	7/16	5/8	1-5/32	Slot
GBL-250	3	250kcmil-6	1/4	9/32	31/64	1	2-3/16	29/64	7/8	1-23/32	7/32

All wire sizes, unless noted otherwise, are American Wire Gauge (AWG)

UL File E34440

* UL 467 and UL 486A/B Listed

+ UL 467 Listed

‡ GBL-4SS is UL2703 Listed UL E354420 Vol. 2

+ Supplied with stainless steel hardware. Meets ASTM B117-09 and is resistant to outdoor salt spray

DE-OX® oxide inhibitor is recommended for all aluminum terminations

Optional MH Series mounting hardware kits available, consult ILSCO