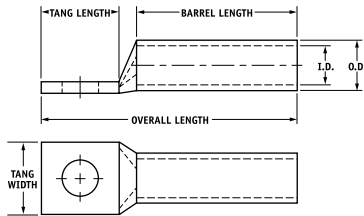


TYPE CSWS

Features

- Manufactured from high strength seamless copper tubing.
- Electro-Tin plated.
- Maximum conductivity and excellent crimping characteristics.
- Chamfered entry.
- Color coded.
- UL 486A 90°C Listed and CSA Certified for 600 Volts.
- If proper high voltage spacing and insulation techniques are used, may be used for high voltage applications up to 35KV.
- For Copper conductor only.
- IlSCO connectors are UL Listed and CSA Certified with ILSCO or other Manufacturers' tools.
- UL File E6207



Catalog Number	Wire Size	Alt Wire Size	Expanded* Wire Range	Bolt Size	Stud Hole Dia.	Tang Length	Tang Width	Barrel Length	Overall Length	Die Color Code	Die Index	Die Catalog Number	O.D.	I.D.
CSWS-1-10	#1 AWG	#2 FLEX	1-6 AWG	10	0.219	0.562	0.673	0.625	1.517	Green	I-37	ILD-37	0.468	0.359
CSWS-1-14	#1 AWG	#2 FLEX	1-6 AWG	1/4	0.281	0.875	0.673	0.625	1.830	Green	I-37	ILD-37	0.468	0.359
CSWS-1-516	#1 AWG	#2 FLEX	1-6 AWG	5/16	0.343	0.875	0.673	0.625	1.830	Green	I-37	ILD-37	0.468	0.359
CSWS-1-38	#1 AWG	#2 FLEX	1-6 AWG	3/8	0.406	0.875	0.673	0.625	1.830	Green	I-37	ILD-37	0.468	0.359
+ CSWS-1-12	#1 AWG	#2 FLEX	1-6 AWG	1/2	0.562	1.250	0.750	0.625	2.205	Green	I-37	ILD-37	0.468	0.359
CSWS-1/0-10	1/0 AWG	#1 FLEX	1/0-6 AWG	10	0.219	0.562	0.738	0.750	1.668	Pink	I-42	ILD-42	0.515	0.390
CSWS-1/0-14	1/0 AWG	#1 FLEX	1/0-6 AWG	1/4	0.281	0.875	0.738	0.750	1.981	Pink	I-42	ILD-42	0.515	0.390
CSWS-1/0-516	1/0 AWG	#1 FLEX	1/0-6 AWG	5/16	0.343	0.875	0.738	0.750	1.981	Pink	I-42	ILD-42	0.515	0.390
CSWS-1/0-38	1/0 AWG	#1 FLEX	1/0-6 AWG	3/8	0.406	0.875	0.738	0.750	1.981	Pink	I-42	ILD-42	0.515	0.390
CSWS-1/0-12	1/0 AWG	#1 FLEX	1/0-6 AWG	1/2	0.562	1.250	0.738	0.750	2.356	Pink	I-42	ILD-42	0.515	0.390
CSWS-2/0-10	2/0 AWG	1/0 FLEX	2/0-4 AWG	10	0.219	0.562	0.811	0.750	1.708	Black	I-45	ILD-45	0.562	0.437
CSWS-2/0-14	2/0 AWG	1/0 FLEX	2/0-4 AWG	1/4	0.281	0.875	0.811	0.750	2.021	Black	I-45	ILD-45	0.562	0.437
CSWS-2/0-516	2/0 AWG	1/0 FLEX	2/0-4 AWG	5/16	0.343	0.875	0.811	0.750	2.021	Black	I-45	ILD-45	0.562	0.437
CSWS-2/0-38	2/0 AWG	1/0 FLEX	2/0-4 AWG	3/8	0.406	0.875	0.811	0.750	2.021	Black	I-45	ILD-45	0.562	0.437
CSWS-2/0-12	2/0 AWG	1/0 FLEX	2/0-4 AWG	1/2	0.562	1.250	0.811	0.750	2.396	Black	I-45	ILD-45	0.562	0.437
CSWS-3/0-10	3/0 AWG	2/0 FLEX	3/0-2 AWG	10	0.219	0.562	0.885	0.750	1.751	Orange	I-50	ILD-50	0.609	0.484
CSWS-3/0-14	3/0 AWG	2/0 FLEX	3/0-2 AWG	1/4	0.281	0.875	0.885	0.750	2.064	Orange	I-50	ILD-50	0.609	0.484
CSWS-3/0-516	3/0 AWG	2/0 FLEX	3/0-2 AWG	5/16	0.343	0.875	0.885	0.750	2.064	Orange	I-50	ILD-50	0.609	0.484
CSWS-3/0-38	3/0 AWG	2/0 FLEX	3/0-2 AWG	3/8	0.406	0.875	0.885	0.750	2.064	Orange	I-50	ILD-50	0.609	0.484
CSWS-3/0-12	3/0 AWG	2/0 FLEX	3/0-2 AWG	1/2	0.562	1.250	0.885	0.750	2.439	Orange	I-50	ILD-50	0.609	0.484
CSWS-4/0-14	4/0 AWG	3/0 FLEX	4/0-1 AWG	1/4	0.281	0.875	0.999	0.875	2.241	Purple	I-54	ILD-54	0.687	0.546
CSWS-4/0-516	4/0 AWG	3/0 FLEX	4/0-1 AWG	5/16	0.343	0.875	0.999	0.875	2.241	Purple	I-54	ILD-54	0.687	0.546
CSWS-4/0-38	4/0 AWG	3/0 FLEX	4/0-1 AWG	3/8	0.406	0.875	0.999	0.875	2.241	Purple	I-54	ILD-54	0.687	0.546
CSWS-4/0-12	4/0 AWG	3/0 FLEX	4/0-1 AWG	1/2	0.562	1.250	0.999	0.875	2.616	Purple	I-54	ILD-54	0.687	0.546
CSWS-250-516	250kcmil	4/0 FLEX	250kcmil - 1/0 AWG	5/16	0.343	0.875	1.088	1.063	2.469	Yellow	I-62	ILD-62	0.750	0.593
CSWS-250-38	250kcmil	4/0 FLEX	250kcmil - 1/0 AWG	3/8	0.406	0.875	1.088	1.063	2.469	Yellow	I-62	ILD-62	0.750	0.593
CSWS-250-12	250kcmil	4/0 FLEX	250kcmil - 1/0 AWG	1/2	0.562	1.250	1.088	1.063	2.844	Yellow	I-62	ILD-62	0.750	0.593
CSWS-300-516	300kcmil	250 G,H FLEX	300kcmil - 2/0 AWG	5/16	0.343	0.875	1.189	1.063	2.525	White	I-66	ILD-66	0.812	0.660
CSWS-300-38	300kcmil	250 G,H FLEX	300kcmil - 2/0 AWG	3/8	0.406	0.875	1.189	1.063	2.525	White	I-66	ILD-66	0.812	0.660
CSWS-300-12	300kcmil	250 G,H FLEX	300kcmil - 2/0 AWG	1/2	0.562	1.250	1.189	1.063	2.900	White	I-66	ILD-66	0.812	0.660
CSWS-300-58	300kcmil	250 G,H FLEX	300kcmil - 2/0 AWG	5/8	0.656	1.437	1.189	1.063	3.087	White	I-66	ILD-66	0.812	0.660

+ Available 3rd quarter 2008

* When installed with specified dieless tools

See pages 34 to 39 for complete tooling information.