

ORDERING INFORMATION

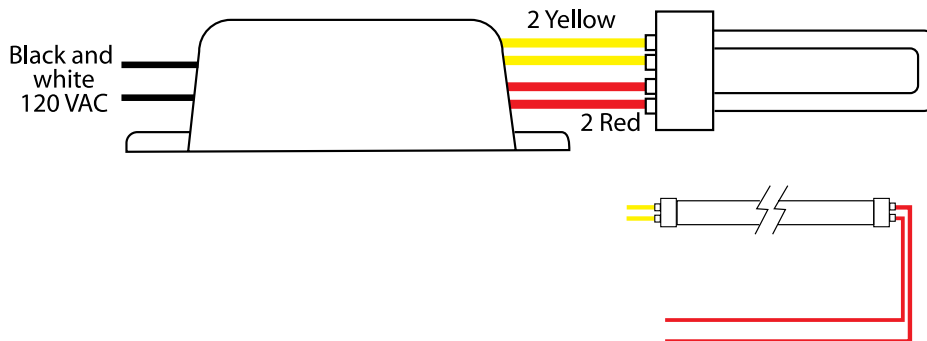
Order code: 59591
 Description: E1528-120-SL GLB
 UPC: 69549595910

SPECIFICATIONS

Ballast type:	Electronic
Starting method:	Instant Start
Lamp connection:	Series
Input voltage (V):	120 V
Input frequency (Hz):	50/60 HZ
Max. case temperature:	70 °C

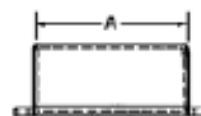
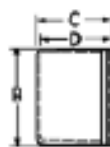
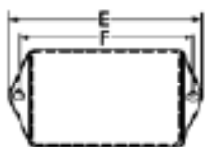


WIRING DIAGRAM



BALLAST DIMENSIONS

A	2.00" (5.08 cm)
B	1.50" (3.91 cm)
C	1.00" (2.54 cm)
D	0.93" (2.36 cm)
E	2.88" (42 cm)
F	2.50" (6.35 cm)



WARRANTY:

Ballast warranty of 5 years for electronic ballast 70-75 °C. Ballast warranty of 3 years for electronic ballast 90 °C.
 For more information visit our website.

Data is based upon tests performed in a controlled environment and representative of relative performance.
 Actual performance can vary depending on operating conditions. Specifications are subject to change without notice.
 March 30, 2015

ORDERING INFORMATION

Order code: 59591
 Description: E1528-120-SL GLB
 UPC: 69549595910

Lamp Type:	Number of lamps	Rated lamp watts	Min. start temp. (°F / °C)	Input current (A)	Input power (ANSI watts)	Ballast factor	Max THD (%)	Power factor	Max. lamp current crest factor	B.E.F.
120 VOLTS										
PL26/TTT (26W)	1	26	14/-10	0.17	18	0.83	6	0.91	2.0	4.50
PL18/TTT (18W)	1	18	14/-10	0.15	16	0.86	6	0.90	2.0	5.27
PL13/TTT (13W)	1	13	14/-10	0.10	14	1.09	6	0.87	2.0	7.59
PL10/TTT (10W)	1	10	14/-10	0.12	12	1.00	6	0.88	2.0	8.24
PL24/TTL (24W)	1	24	14/-10	0.14	15	0.60	6	0.90	2.0	4.03
PL18/TTL (18W)	1	18	14/-10	0.10	11	0.56	6	0.89	2.0	5.19
PL13/TT (13W)	1	13	14/-10	0.10	10	0.71	6	0.87	2.0	6.94
PL11/TT (11W)	1	11	14/-10	0.13	14	1.20	6	0.90	2.0	8.44
PL9/TT (9W)	1	9	14/-10	0.09	9	1.06	6	0.88	2.0	11.41
PL7/TT (7W)	1	7	14/-10	0.08	8	1.03	6	0.88	2.0	12.97
PL5/TT (5W)	1	5	14/-10	0.06	7	0.95	6	0.87	2.0	14.44
F28T5 (28W)	1	28	14/-10	0.21	24	1.06	6	0.92	2.0	4.49
F21T5 (21W)	1	21	14/-10	0.18	19	1.06	6	0.91	2.0	5.45
F14T5 (14W)	1	14	14/-10	0.14	15	1.06	6	0.90	2.0	7.16
F13T5 (13W)	1	13	14/-10	14.80	15	1.09	6	0.90	2.0	7.36
F8T5 (8W)	1	8	14/-10	0.07	7	0.79	6	0.88	2.0	11.52
F6T5 (6W)	1	6	14/-10	0.07	8	1.13	6	0.88	2.0	14.66
F4T5 (4W)	1	4	14/-10	0.06	6	1.06	6	0.88	2.0	18.24
F25T8 (25W)	1	25	14/-10	0.17	19	0.97	6	0.91	2.0	5.13
F18T8 (18W)	1	18	14/-10	0.11	11	0.67	6	0.90	2.0	5.88
F17T8 (17W)	1	17	14/-10	0.12	13	0.97	6	0.90	2.0	7.35
F16T8 (16W)	1	16	14/-10	0.11	11	0.84	6	0.89	2.0	7.43
F15T8 (15W)	1	15	14/-10	0.10	11	0.84	6	0.89	2.0	7.92
F14T8 (14W)	1	14	14/-10	0.09	10	0.84	6	0.89	2.0	8.40
F13T8 (13W)	1	13	14/-10	0.08	8	0.84	6	0.88	2.0	10.37
F15T12 (15W)	1	15	14/-10	0.10	11	0.79	6	0.90	2.0	7.10
F14T12 (14W)	1	14	14/-10	0.10	11	0.79	6	0.90	2.0	7.10
2D (28W)	1	28	14/-10	0.18	19	0.56	6	0.91	2.0	2.90
2D (21W)	1	21	14/-10	0.15	17	0.69	6	0.91	2.0	4.16
2D (16W)	1	16	14/-10	0.15	16	0.92	6	0.90	2.0	5.83
2D (10W)	1	10	14/-10	0.12	12	1.00	6	0.88	2.0	8.24

WARRANTY:

Ballast warranty of 5 years for electronic ballast 70-75 °C. Ballast warranty of 3 years for electronic ballast 90 °C.
 For more information visit our website.

Data is based upon tests performed in a controlled environment and representative of relative performance.
 Actual performance can vary depending on operating conditions. Specifications are subject to change without notice.

March 30, 2015