

# A70P Amp-Trap® Form 101

A70P Amp-Trap® Form 101 Semiconductor Protection fuses were developed for higher voltage AC and DC drives, UPS systems, reduced voltage motor starters and similar applications where lower I<sup>2</sup>t and superior reliability are needed. A70P is a very popular fuse, available in a wide range of ratings. Typically used for replacement.

## Features/Benefits:

- Low I<sup>2</sup>t minimizes damage to protected components on short circuit
- Controlled arc voltage reduces stress to circuit components during fuse clearing
- Choice of mounting types helps in equipment design

## Highlights:

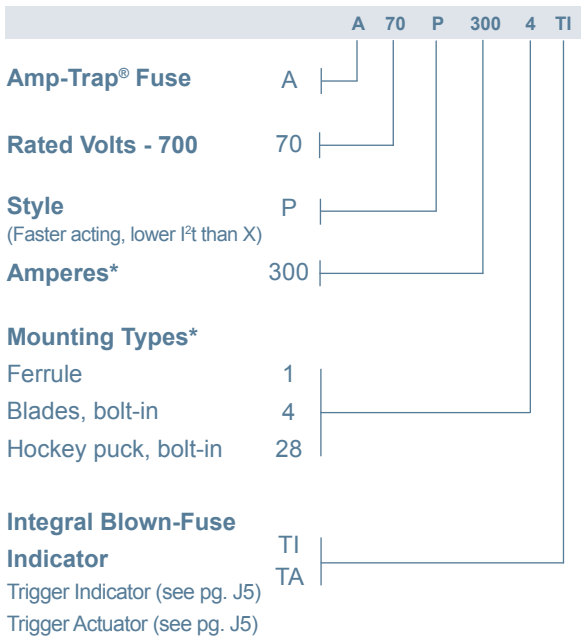
- Very fast acting
- Current limiting
- Low I<sup>2</sup>t
- Indicator options available

## Applications:

- Protection of 700V or less DC drives, UPS, inverters, reduced voltage starters, etc.

*\*Contact technical services for application data.*

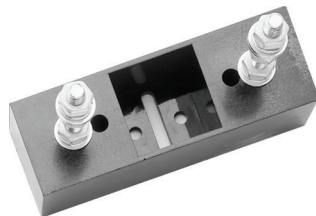
## Catalog Numbering System



*\* For ampere ratings and styles not listed, call Technical Services at 978-465-4853.*

## Single Pole Fuse Blocks for A70P Fuses

| Fuse Ampere Rating | Catalog No. |
|--------------------|-------------|
| 10-30 (Type 1)     | 70316       |
| 31-60              | P243C       |
| 61-100             | P243C       |
| 101-200            | P266A       |
| 201-400            | P266A       |
| 401-600            | P266F       |
| 601-800            | 1SC375      |



## Ratings:

- Volts** : 700VAC  
: 650VDC
- Amps** : 10 to 1000A (AC)  
: 10 to 800A (DC)
- I.R.** : 100kA I.R. AC  
: 100kA I.R. DC
- L/R** : 10ms

## Approvals:

- UL recognized component UL File E60314
- AC: guide no. JFHR2 (10-1000A)
- DC: tested to UL standard 198L parameters (10-800A)



# A70P Amp-Trap® Form 101

## Catalog Numbers (amps)

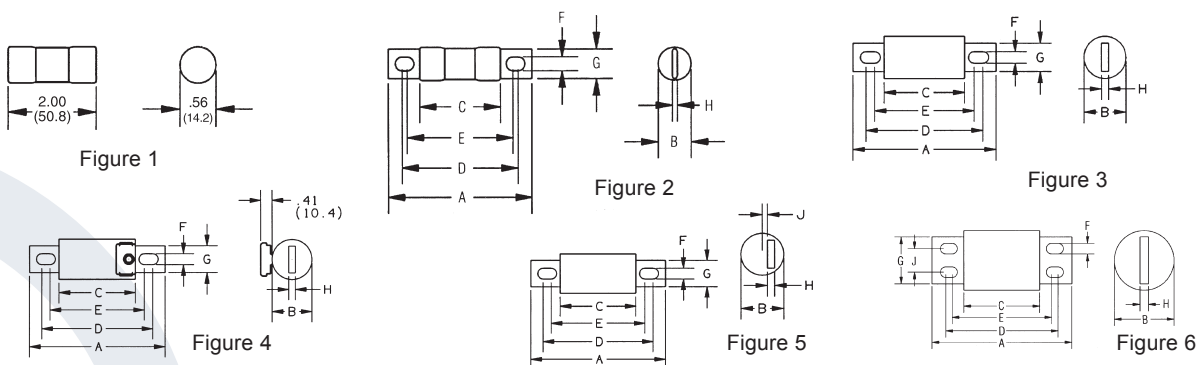
| Catalog No. | Dimen. Fig. | Catalog No. | Dimen. Fig. | Catalog No. | Dimen. Fig. |
|-------------|-------------|-------------|-------------|-------------|-------------|
| A70P10-1    | 1           | A70P80-4    | 3           | A70P300-4   | 3           |
| A70P10-4    | 2           | A70P80-4TA  | 4           | A70P350-4   | 3           |
| A70P15-1    | 1           | A70P80-4TI  | 3           | A70P400-4   | 3           |
| A70P15-4    | 2           | A70P90-4    | 3           | A70P400-4TA | 4           |
| A70P20-1    | 1           | A70P100-4   | 3           | A70P400-4TI | 3           |
| A70P25-1    | 1           | A70P100-4TA | 4           | A70P450-4   | 3           |
| A70P25-4    | 2           | A70P125-4   | 3           | A70P500-4   | 3           |
| A70P30-1    | 1           | A70P125-4TA | 4           | A70P600-4   | 3           |
| A70P30-4    | 2           | A70P150-4   | 3           | A70P600-4TA | 4           |
| A70P35-4    | 3           | A70P150-4TA | 4           | A70P600-4TI | 3           |
| A70P40-4    | 3           | A70P150-4TI | 3           | A70P700-4   | 5           |
| A70P40-4TA  | 4           | A70P175-4   | 3           | A70P700-4TI | 5           |
| A70P40-4TI  | 3           | A70P200-4   | 3           | A70P800-4   | 5           |
| A70P50-4    | 3           | A70P200-4TA | 4           | A70P800-4TI | 5           |
| A70P60-4    | 3           | A70P200-4TI | 3           | A70P900-4   | 6           |
| A70P60-4TA  | 4           | A70P225-4   | 3           | A70P1000-4  | 6           |
| A70P60-4TI  | 3           | A70P250-4   | 3           |             |             |
| A70P70-4    | 3           | A70P250-4TA | 4           |             |             |
| A70P70-4TI  | 3           | A70P250-4TI | 3           |             |             |

\* For ampere ratings and styles not listed, call Technical Services at 978-465-4853.

## Dimensions

| Outline Ref.    | Mounting Type | Fig.  | Dimensions - Inches (mm) |                |                |                |                |               |                |               |                |   |
|-----------------|---------------|-------|--------------------------|----------------|----------------|----------------|----------------|---------------|----------------|---------------|----------------|---|
|                 |               |       | A                        | B              | C              | D              | E              | F             | G              | H             | J              |   |
| A70P10 to 30    | 1             | 1     | 2.00<br>(50.8)           | .56<br>(14.2)  | -              | -              | -              | -             | -              | -             | -              | - |
| A70P10 to 30    | 4             | 2     | 2.88<br>(73.2)           | .56<br>(14.2)  | 1.88<br>(47.8) | 2.50<br>(63.5) | -              | .27<br>(6.9)  | .41<br>(10.4)  | -             | -              | - |
| A70P35 to 60    | 4, 4TA*, 4TI  | 3, 4* | 4.38<br>(111)            | 1.00<br>(25.4) | 2.88<br>(73.2) | 3.69<br>(93.7) | 3.50<br>(88.9) | .31<br>(7.9)  | .75<br>(19.1)  | .13<br>(3.2)  | -              | - |
| A70P70 to 100   | 4, 4TA*, 4TI  | 3, 4* | 4.38<br>(111)            | 1.22<br>(31.0) | 2.88<br>(73.2) | 3.69<br>(93.7) | 3.56<br>(90.4) | .31<br>(7.9)  | 1.00<br>(25.4) | .19<br>(4.8)  | -              | - |
| A70P125 to 200  | 4, 4TA*, 4TI  | 3, 4* | 5.09<br>(129)            | 1.50<br>(38.1) | 2.84<br>(72.1) | 4.16<br>(106)  | 3.53<br>(89.7) | .41<br>(10.4) | 1.00<br>(25.4) | .25<br>(6.4)  | -              | - |
| A70P225 to 400  | 4, 4TA*, 4TI  | 3, 4* | 5.09<br>(129)            | 2.00<br>(50.8) | 2.84<br>(72.1) | 4.16<br>(106)  | 3.53<br>(89.7) | .41<br>(10.4) | 1.50<br>(38.1) | .24<br>(6.4)  | -              | - |
| A70P450 to 600  | 4, 4TA*, 4TI  | 3, 4* | 7.09<br>(180)            | 2.38<br>(60.5) | 2.84<br>(72.1) | 5.25<br>(133)  | 4.94<br>(125)  | .53<br>(13.5) | 2.00<br>(50.8) | .38<br>(9.7)  | -              | - |
| A70P700 to 800  | 4, 4TI        | 5     | 6.81<br>(173)            | 2.88<br>(73.2) | 3.31<br>(84.1) | 5.31<br>(135)  | -              | .63<br>(16.0) | 2.00<br>(50.8) | .38<br>(9.7)  | .31<br>(7.9)   | - |
| A70P900 to 1000 | 4, 4TI        | 6     | 7.59<br>(193)            | 3.50<br>(88.9) | 3.84<br>(97.5) | 5.97<br>(152)  | 5.22<br>(133)  | .63<br>(16.0) | 2.75<br>(69.9) | .50<br>(12.7) | 1.38<br>(35.1) | - |

\* Optional Trigger Actuator



For the most current product performance data visit [ep-us.mersen.com](http://ep-us.mersen.com) and use catalog search.