



## CONTEMPRA 2 ELECTRONIC RACK

- Available as a rapid rack assembly or as components.

### APPLICATIONS:

- Full featured rack which will completely service most 19" panel width and shelving applications.
- Modular design (frame with removable components) allows easy access to the interior during installation and maintenance.
- Cabinets can be joined together in larger applications due to modular design.
- Extremely sturdy unit which is capable of handling 1500 lbs. (680 kg) of evenly loaded equipment.
- Ideal for office environments and computer room applications.

### STANDARDS:

- EIA RS-310-D
- NEMA Type 1

### CONSTRUCTION:

- 14 gauge steel frame with welded corner reinforcements.
- Mounting channels of sides of enclosures are oriented front to back for mounting variable depth mounting.
- Frames are easily joined together by optional ganging kits.
- Doors can be easily removed and interchanged.
- Appropriate doors can be mounted on front or back of frame.
- Formed 16 gauge steel side panels are recessed to fit flush with the sides of the cabinet.
- Open top allows for a variety of passive cooling options.
- Open bottom permits cable entry point.

### ACCESSORIES:

- Blower adapter kit.
- Blowers.
- Bolt down kit.
- Bottoms.
- Cable management.
- Casters.
- Cooling.
- Desk unit.
- Doors.
- Drawers.
- Fan top.
- Fan tray.
- Ganging kit.
- Ground bus bar.
- Hardware.
- Levelling feet.
- Partial height door support.
- Plinth.
- Rack mount outlet strips.
- Shelves and slides.
- Side panels.
- Tops.
- Trim kit.
- 19" rack mount accessories.



## CONTEMPRA 2 ELECTRONIC RAPID RACK

- For immediate delivery requirements, the Rapid Rack package can solve many freestanding enclosure needs.
- Assembled package includes the following components and hardware:
  - 1—heavy duty 14 gauge steel frame (1500 lbs. (680 kg) even load rating)
  - 1—pair of 16 gauge steel side panels
  - 1—solid flush mount door
  - 1—solid top.
  - 4—infinitely adjustable 10 gauge steel combination rails (zinc plated)
  - 4—adjustable levelling feet.
- Standard 19" panel width (23" overall)
- Available in CG1 grey/beige or BK1 black textured powder paint finish

Cat. No.	Panel Height		Overall Dimensions (Inches)			Ship Wt. Lbs.	Net Price
	Inches	Units	H	W	D		
<b>GREY/BEIGE</b>							
∅ C2RR194223CG1	42.00	24	49.31	23	23.63	205	\$1066.52
∅ C2RR196323CG1	63.00	36	70.31	23	23.63	260	1218.05
∅ C2RR197023CG1	70.00	40	77.31	23	23.63	295	1274.75
∅ C2RR197823CG1	78.75	45	86.06	23	23.63	330	1346.05
∅ C2RR194231CG1	42.00	24	49.31	23	31.5	218	1106.98
∅ C2RR196331CG1	63.00	36	70.31	23	31.5	280	1289.52
∅ C2RR197031CG1	70.00	40	77.31	23	31.5	315	1327.97
∅ C2RR197831CG1	78.75	45	86.06	23	31.5	355	1438.45
<b>BLACK</b>							
∅ C2RR194223BK1	42.00	24	49.31	23	23.63	205	1066.52
∅ C2RR196323BK1	63.00	36	70.31	23	23.63	260	1218.05
∅ C2RR197023BK1	70.75	40	77.31	23	23.63	295	1274.75
∅ C2RR197823BK1	78.75	45	86.06	23	23.63	330	1346.05
∅ C2RR194231BK1	42.00	24	49.31	23	31.5	218	1106.98
∅ C2RR196331BK1	63.75	36	70.31	23	31.5	280	1289.52
∅ C2RR197031BK1	70.75	40	77.31	23	31.5	315	1327.97
∅ C2RR197831BK1	78.75	45	86.06	23	31.5	355	1438.45



Continued on next page....

# Hammond Electronic Rack Packaging

## CONTEMPRA 2 FRAME

- The basic component of a Contempra 2 rack is the welded 14 gauge steel frame (1500 lbs. (680 kg) even load rating)
- 8 panel heights and 3 depths available
- Standard top cutout makes provision for various top panel options
- Frame comes complete with 4 adjustable levelling feet
- Panel mounting rails are NOT included—please order separately
- Standard 19" panel width (23" overall)
- Available in CG 1 grey/beige or BK 1 black textured powder paint finish

Cat. No.	Panel Height		Overall Dimensions (Inches)			Ship Wt. Lbs.	Net Price
	Inches	Units	H	W	D		
<b>GREY/BEIGE</b>							
C2F193523CG1	35.00	20	42.31	23	23.63	90	\$487.53
C2F194223CG1	42.00	24	49.31	23	23.63	110	499.03
C2F194923CG1	49.00	28	56.31	23	23.63	125	508.60
C2F195623CG1	56.00	32	63.31	23	23.63	137	513.47
C2F196323CG1	63.00	36	70.31	23	23.63	140	517.95
C2F197023CG1	70.00	40	77.31	23	23.63	160	550.81
C2F197823CG1	78.75	45	86.06	23	23.63	180	561.40
C2F198523CG1	85.81	49	93.06	23	23.63	185	600.83
C2F193531CG1	35.00	20	42.31	23	31.50	95	518.77
C2F194231CG1	42.00	24	49.31	23	31.50	115	529.22
C2F194931CG1	49.00	28	56.31	23	31.50	130	538.32
C2F195631CG1	56.00	32	63.31	23	31.50	142	545.53
C2F196331CG1	63.00	36	70.31	23	31.50	145	550.36
C2F197031CG1	70.00	40	77.31	23	31.50	165	570.03
C2F197831CG1	78.75	45	86.06	23	31.50	185	589.84
C2F198531CG1	85.81	49	93.06	23	31.50	190	648.90
C2F193536CG1	35.00	20	42.31	23	36.00	100	570.62
C2F194236CG1	42.00	24	49.31	23	36.00	120	582.14
C2F194936CG1	49.00	28	56.31	23	36.00	135	592.15
C2F195636CG1	56.00	32	63.31	23	36.00	147	600.09
C2F196336CG1	63.00	36	70.31	23	36.00	150	605.41
C2F197036CG1	70.00	40	77.31	23	36.00	170	627.04
C2F197836CG1	78.75	45	86.06	23	36.00	190	648.83
C2F198536CG1	85.81	49	93.06	23	36.00	195	690.69
<b>BLACK</b>							
C2F193523BK1	35.00	20	42.31	23	23.63	90	487.53
C2F194223BK1	42.00	24	49.31	23	23.63	110	499.03
C2F194923BK1	49.00	28	56.31	23	23.63	125	508.60
C2F195623BK1	56.00	32	63.31	23	23.63	137	513.47
C2F196323BK1	63.00	36	70.31	23	23.63	140	517.95
C2F197023BK1	70.00	40	77.31	23	23.63	160	550.81
C2F197823BK1	78.75	45	86.06	23	23.63	180	561.40
C2F198523BK1	85.81	49	93.06	23	23.63	185	600.83
C2F193531BK1	35.00	20	42.31	23	31.50	95	518.77
C2F194231BK1	42.00	24	49.31	23	31.50	115	529.22
C2F194931BK1	49.00	28	56.31	23	31.50	130	538.32
C2F195631BK1	56.00	32	63.31	23	31.50	142	545.53
C2F196331BK1	63.00	36	70.31	23	31.50	145	550.36
C2F197031BK1	70.00	40	77.31	23	31.50	165	570.03
C2F197831BK1	78.75	45	86.06	23	31.50	185	589.84
C2F198531BK1	85.81	49	93.06	23	31.50	190	648.90
C2F193536BK1	35.00	20	42.31	23	36.00	100	570.62
C2F194236BK1	42.00	24	49.31	23	36.00	120	582.14
C2F194936BK1	49.00	28	56.31	23	36.00	135	592.15
C2F195636BK1	56.00	32	63.31	23	36.00	147	600.09
C2F196336BK1	63.00	36	70.31	23	36.00	150	605.41
C2F197036BK1	70.00	40	77.31	23	36.00	170	627.04
C2F197836BK1	78.75	45	86.06	23	36.00	190	648.83
C2F198536BK1	85.81	49	93.06	23	36.00	195	690.69



**CONTEMPRA 2 SIDE PANELS**

- Sold in pairs.
- Constructed of 16 gauge steel.
- Panels fit flush with frame.
- Feature quick release quarter turn cam fasteners with internal locking provision.
- Rugged textured powder paint finish.

Cat. No.	Panel Height		Use with Frame	Ship Wt. Lbs.	Net Price
	Inches	Units			
<b>GREY/BEIGE</b>					
CSP3523CG1	35.00	20	C2F193523	30	\$108.48
CSP4223CG1	42.00	24	C2F194223	38	119.02
CSP4923CG1	49.00	28	C2F194923	46	133.98
CSP5623CG1	56.00	32	C2F195623	54	153.39
CSP6323CG1	63.00	36	C2F196323	65	185.90
CSP7023CG1	70.00	40	C2F197023	75	173.74
CSP7823CG1	78.75	45	C2F197823	85	209.81
CSP8523CG1	85.75	49	C2F198523	90	240.33
CSP3531CG1	35.00	20	C2F193531	36	108.48
CSP4231CG1	42.00	24	C2F194231	44	119.02
CSP4931CG1	49.00	28	C2F194931	52	133.49
CSP5631CG1	56.00	32	C2F195631	68	160.30
CSP6331CG1	63.00	36	C2F196331	78	223.37
CSP7031CG1	70.00	40	C2F197031	90	193.20
CSP7831CG1	78.75	45	C2F197831	102	259.26
CSP8531CG1	85.75	49	C2F198531	107	288.40
CSP3536CG1	35.00	20	C2F193536	41	119.33
CSP4236CG1	42.00	24	C2F194236	49	130.90
CSP4936CG1	49.00	28	C2F194936	57	146.81
CSP5636CG1	56.00	32	C2F195636	78	176.33
CSP6336CG1	63.00	36	C2F196336	88	245.70
CSP7036CG1	70.00	40	C2F197036	100	212.52
CSP7836CG1	78.75	45	C2F197836	115	285.18
CSP8536CG1	85.75	49	C2F198536	120	317.24
<b>BLACK</b>					
CSP3523BK1	35.00	20	C2F193523	30	108.48
CSP4223BK1	42.00	24	C2F194223	38	119.02
CSP4923BK1	49.00	28	C2F194923	46	133.98
CSP5623BK1	56.00	32	C2F195623	54	153.39
CSP6323BK1	63.00	36	C2F196323	65	185.90
CSP7023BK1	70.00	40	C2F197023	75	173.74
CSP7823BK1	78.75	45	C2F197823	85	209.81
CSP8523BK1	85.75	49	C2F198523	90	240.33
CSP3531BK1	35.00	20	C2F193531	36	108.48
CSP4231BK1	42.00	24	C2F194231	44	119.02
CSP4931BK1	49.00	28	C2F194931	52	133.49
CSP5631BK1	56.00	32	C2F195631	68	160.30
CSP6331BK1	63.00	36	C2F196331	78	223.37
CSP7031BK1	70.00	40	C2F197031	90	193.20
CSP7831BK1	78.75	45	C2F197831	102	259.26
CSP8531BK1	85.75	49	C2F198531	107	288.40
CSP3536BK1	35.00	20	C2F193536	41	119.33
CSP4236BK1	42.00	24	C2F194236	49	130.90
CSP4936BK1	49.00	28	C2F194936	57	146.81
CSP5636BK1	56.00	32	C2F195636	78	176.33
CSP6336BK1	63.00	36	C2F196336	88	245.70
CSP7036BK1	70.00	40	C2F197036	100	212.52
CSP7836BK1	78.75	45	C2F197836	115	285.18
CSP8536BK1	85.75	49	C2F198536	120	317.24



**CONTEMPRA 2 FLUSH SOLID DOOR**

- Flush mount.
- Constructed of heavy duty 16 gauge steel with sturdy door stiffeners welded on.
- Reversible for either right or left hand mounting.
- Features lockable latch, magnetic catch and spring loaded hinge pins for instant installation or removal.
- Allows full access to space between panel rails when open.
- Rugged textured powder paint finish.

Continued on next page....

# Hammond Electronic Rack Packaging

Cat. No.	Panel Height		Use With Frame	Ship Wt. Lbs.	Net Price
	Inches	Units			
<b>GREY/BEIGE</b>					
⊕ CDF1935SCG1	35.00	20	C2F1935CG1	24	\$211.82
⊕ CDF1942SCG1	42.00	24	C2F1942CG1	28	220.24
⊕ CDF1949SCG1	49.00	28	C2F1949CG1	33	230.91
⊕ CDF1956SCG1	56.00	32	C2F1956CG1	40	244.14
⊕ CDF1963SCG1	63.00	36	C2F1963CG1	45	268.29
⊕ CDF1970SCG1	70.00	40	C2F1970CG1	51	283.57
⊕ CDF1978SCG1	78.75	45	C2F1978CG1	57	293.63
⊕ CDF1985SCG1	85.75	49	C2F1985CG1	63	305.22

<b>BLACK</b>					
⊕ CDF1935SBK1	35.00	20	C2F1935BK1	24	211.82
⊕ CDF1942SBK1	42.00	24	C2F1942BK1	28	220.24
⊕ CDF1949SBK1	49.00	28	C2F1949BK1	33	230.91
⊕ CDF1956SBK1	56.00	32	C2F1956BK1	40	244.14
⊕ CDF1963SBK1	63.00	36	C2F1963BK1	45	268.29
⊕ CDF1970SBK1	70.00	40	C2F1970BK1	51	283.57
⊕ CDF1978SBK1	78.75	45	C2F1978BK1	57	293.63
⊕ CDF1985SBK1	85.75	49	C2F1985BK1	63	305.22



## CONTEMPRA 2 FLUSH LOUVERED DOOR

- Flush mount.
- Constructed of heavy duty 16 gauge steel with sturdy door stiffeners welded on.
- Opens right hand only with louvers facing down.
- Features lockable latch, magnetic catch and spring loaded hinge pins for instant installation or removal.
- Allows full access to space between panel rails when open.
- Rugged textured powder paint finish.

Cat. No.	Panel Height		Use With Frame	Ship Wt. Lbs.	Net Price
	Inches	Units			
<b>GREY/BEIGE</b>					
⊕ CDF1935LCG1	35.00	20	C2F1935CG1	24	\$254.19
⊕ CDF1942LCG1	42.00	24	C2F1942CG1	28	264.30
⊕ CDF1949LCG1	49.00	28	C2F1949CG1	33	277.11
⊕ CDF1956LCG1	56.00	32	C2F1956CG1	40	292.95
⊕ CDF1963LCG1	63.00	36	C2F1963CG1	45	321.95
⊕ CDF1970LCG1	70.00	40	C2F1970CG1	51	340.27
⊕ CDF1978LCG1	78.75	45	C2F1978CG1	57	352.36
⊕ CDF1985LCG1	85.75	49	C2F1985CG1	63	366.26

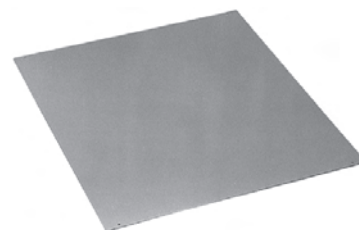
<b>BLACK</b>					
⊕ CDF1935LBK1	35.00	20	C2F1935BK1	24	254.19
⊕ CDF1942LBK1	42.00	24	C2F1942BK1	28	264.30
⊕ CDF1949LBK1	49.00	28	C2F1949BK1	33	277.11
⊕ CDF1956LBK1	56.00	32	C2F1956BK1	40	292.95
⊕ CDF1963LBK1	63.00	36	C2F1963BK1	45	321.95
⊕ CDF1970LBK1	70.00	40	C2F1970BK1	51	340.27
⊕ CDF1978LBK1	78.75	45	C2F1978BK1	57	352.36
⊕ CDF1985LBK1	85.75	49	C2F1985BK1	63	366.26



## CONTEMPRA 2 FLUSH PLEXI DOOR

- Flush mount.
- 16 gauge steel door frame with smoked plexiglass insert.
- Reversible for either right or left hand mounting.
- Features lockable latch, magnetic catch and spring loaded hinge pins for instant installation or removal.
- Allows full access to space between panel rails when open.
- Rugged textured powder paint finish.

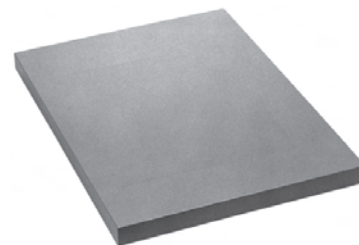
Cat. No.	Panel Height		Use With Frame	Ship Wt. Lbs.	Net Price
	Inches	Units			
⊕ C2DF1935PBK1	35.00	20	C2F1935	11	\$367.36
⊕ C2DF1942PBK1	42.00	24	C2F1942	17	378.86
⊕ C2DF1949PBK1	49.00	28	C2F1949	19	389.41
⊕ C2DF1956PBK1	56.00	32	C2F1956	24	406.14
⊕ C2DF1963PBK1	63.00	36	C2F1963	27	443.96
⊕ C2DF1970PBK1	70.00	40	C2F1970	30	490.51
⊕ C2DF1978PBK1	78.75	45	C2F1978	34	514.85
⊕ C2DF1985PBK1	85.75	49	C2F1985	38	540.75



## CONTEMPRA 2 SOLID TOP

- Constructed of 14 gauge steel.
- Should be used on all racks where protection from dust or falling objects is required.
- Mounting hardware is included.
- Finished in rugged textured powder paint.

Cat. No.	Panel Width	Use with Cabinet Depth	Net Price
<b>GREY/BEIGE</b>			
⊕ C2T1923SCG1	19"	23.63"	\$24.97
⊕ C2T1931SCG1	19"	31.50"	39.48
⊕ C2T1936SCG1	19"	36.00"	45.41
<b>BLACK</b>			
⊕ C2T1923SBK1	19"	23.63"	24.97
⊕ C2T1931SBK1	19"	31.50"	39.48
⊕ C2T1936SBK1	19"	36.50"	45.41

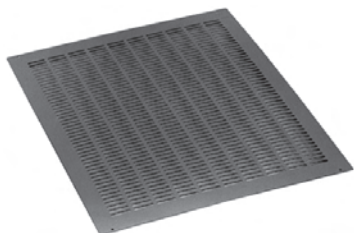


Continued on next page....

## CONTEMPRA 2 RAISED TOP

- Constructed of 14 gauge steel.
- Simple up or down adjustment permits either raised installation for venting or flush mounting for a smooth decorative finish.
- Allows for protection from falling objects or liquids.
- When raised, permits convection cooling as gap between top and frame allows warm air to escape on all four sides.
- Mounting hardware is included.
- Finished in rugged textured powder paint.

Cat. No.	Panel Width	Use with Cabinet Depth	Net Price
<b>GREY/BEIGE</b>			
C2T1923RCG1	19"	23.63"	\$181.84
C2T1931RCG1	19"	31.50"	190.84
C2T1936RCG1	19"	36.00"	219.47
<b>BLACK</b>			
C2T1923RBK1	19"	23.63"	181.84
C2T1931RBK1	19"	31.50"	190.84
C2T1936RBK1	19"	36.00"	219.47



## CONTEMPRA 2 VENTED TOP

- Constructed of 14 gauge steel.
- Provides a practical and economical solution to convection cooling requirements.
- Mounting hardware included.
- Finished in rugged textured powder paint.

Cat. No.	Panel Width	Use with Cabinet Depth	Net Price
<b>GREY/BEIGE</b>			
C2T1923VCG1	19"	23.63"	\$37.45
C2T1931VCG1	19"	31.50"	59.24
C2T1936VCG1	19"	36.00"	68.13
<b>BLACK</b>			
C2T1923VBK1	19"	23.63"	37.45
C2T1931VBK1	19"	31.50"	59.24
C2T1936VBK1	19"	36.00"	68.13



## CONTEMPRA 2 FAN TOP

- 14 gauge steel fan top.
- When more substantial cooling is required, this top is prepunched to accept 4" muffin fans—see below.
- For 23" deep versions, 2 cutouts wide by 2 cutouts deep and for 31.5" and 36" deep versions, 2 cutouts wide by 3 cutouts deep.
- If all cutouts are not used, optional fan covers are available.
- Fans, finger guards and cards are not included.
- Mounting hardware is included.
- Finished in rugged textured powder paint.

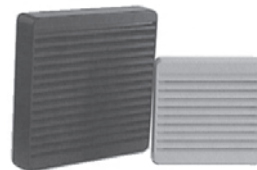
Cat. No.	Panel Width	Use with Cabinet Depth	Number of Fanholes	Net Price
C2T1923FCG1	19"	23.63"	4	\$37.45
C2T1931FCG1	19"	31.50"	6	59.24
C2T1936FCG1	19"	36.00"	6	68.13
C2T1923FBK1	19"	23.63"	4	37.45
C2T1931FBK1	19"	31.50"	6	59.24
C2T1936FBK1	19"	36.00"	6	68.13



## CONTEMPRA 2 PRE-WIRED 4" FAN TOP

- 14 gauge steel fan top.
- Fans are pre-wired, installed & complete with 3 foot cord & plug.
- Includes 4-4.7", 115 volt, 50/60 Hz. AC, 100 CFM fans.
- Finger guards are punched into top panel.
- Finished in rugged textured powder paint.

Cat. No.	Panel Width	Use with Cabinet Depth	Net Price
<b>GREY/BEIGE</b>			
C2T1923F4CG1	19"	23.63"	\$201.88
C2T1931F4CG1	19"	31.50"	207.64
C2T1936F4CG1	19"	36.00"	213.90
<b>BLACK</b>			
C2T1923F4BK1	19"	23.63"	201.88
C2T1931F4BK1	19"	31.50"	207.64
C2T1936F4BK1	19"	36.00"	213.90



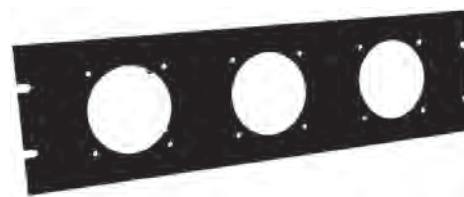
## ECONOMY PLASTIC FILTER FAN GRILLS

- Create your own filter fans or exhaust grill
- Mounts easily with 4 screws using template & hardware provided
- Complete with flame retardant ABS plastic grill & flame retardant synthetic filter
- Can be used with standard 3.15" or 4.7" square fans

Cat. No.	Grill Size		Use With Square Fan Size	Colour	Net Price
	H	W			
XPFA80BK	4.13"	4.13"	3.15"	Black	\$8.07
XPFA80CG	4.13"	4.13"	3.15"	Grey/Beige	8.07
XPFA80GY	4.13"	4.13"	3.15"	ASA 61 Grey	8.07
XPFA120BK	5.91"	5.91"	4.7"	Black	12.29
XPFA120CG	5.91"	5.91"	4.7"	Grey/Beige	12.29
XPFA120GY	5.91"	5.91"	4.7"	ASA 61 Grey	12.29

## REPLACEMENT FILTER PACK FOR ABOVE (5 PER PACK)

Cat. No.	Use with Square Fan Size	Net Price
PFF1000	3.15" (XPFA80 series)	\$8.70
PFF2000	4.7" (XPFA120 series)	9.93



## FAN PANEL

- Create your own 19" rack mount fan or filter fan from these panels
- Accepts standard square fans
- For a filter fan panel, use our filter grills
- Finished in textured black powder paint
- Fans and hardware not included. Please order separately

Cat. No.	Panel Height		Accepts Fan Size	No. of Fan Hole	Net Price
	Inches	U			
PPFP190802BK1	5.25	3	3.15	2	\$18.47
PPFP190803BK1	5.25	3	3.15	3	18.47
PPFP191202BK1	7.00	4	4.7	2	22.40





### GRILL PANEL

- Create your own 19" rack mount fan or filter fan from these panels
- Accepts standard square fans 4.7"
- Grill panel is punched with integral front finger guards
- Finished in textured black powder paint
- Fans and hardware not included. Please order separately

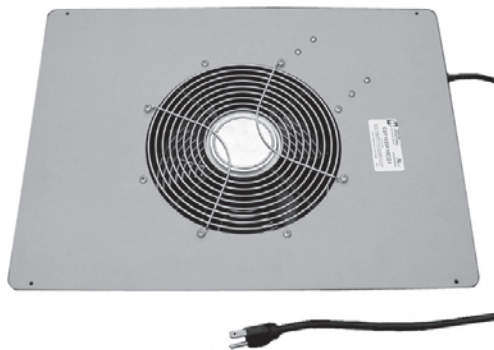
Cat. No.	Panel Height		Accepts Fan Size	No. of Fan Holes	Net Price
	Inches	U			
PPGP191202BK1	5.25	3	4.7	2	\$22.40



### RACK COOLING FAN TRAYS

- Standard 19" rack mount
- Compact and economical rack cooling solution
- Fan trays can be positioned at the bottom of a rack to force air through the cabinet, at the top to exhaust air out or below specific pieces of equipment for spot cooling
- 115VAC 50/60 Hz, thermally protected, ball bearing fans UR/CUR listed
- Circuit breaker protected
- Low profile 1.75: (1U) of panel space
- 6' 14/3 STJW cord with moulded 3 prong plug included
- Integral finger guards above and below fans
- Case width is 17"
- 6 and 9 fan units include an adjustable rear mounting bracket (mounts to rear panel rails) for extra stability
- Shipped fully assembled
- Available with or without on/off switch
- Finished in smooth black powder paint

Cat. No.	No. of Fans	Free Flow Air Delivery (CFM)	Running Amps	Running Wattage	Case Depth	Rear Bracket		Net Price
						Min.	Max.	
<b>WITH ON/OFF SWITCH</b>								
FT300HA1BK	3	300	0.5	40	7.50"	n/a	n/a	\$261.64
FT600HA1BK	6	600	1.0	80	13.0"	2.4"	19.2"	427.05
FT900HA1BK	9	900	1.5	120	18.50"	7.9"	24.7"	532.31
<b>WITHOUT ON/OFF SWITCH</b>								
FT300TA1BK	3	300	0.5	40	7.50"	n/a	n/a	255.62
FT600TA1BK	6	600	1.0	80	13.0"	2.4"	19.2"	421.04
FT900TA1BK	9	900	1.5	120	18.50"	7.9"	24.7"	526.29



### CONTEMPRA 2 PRE-WIRED 10" FAN TOP

- 14 gauge steel fan top
- Includes 1 - 10", 115 volt, 50/60Hz, AC, 550 CFM AC fan 35 watt motor
- Top & bottom finger guards are punched into top panel
- All hardware is included
- 5' cord with molded on plug
- Ball bearing construction
- Airflow exhausts the rack

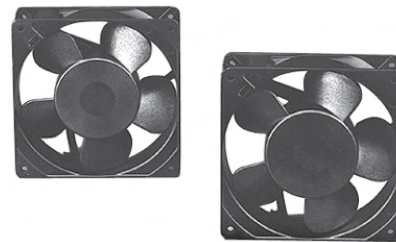
Cat. No.	Panel Width	Use with Cabinet Depth	Net Price
C2T1923F10CG1	19"	23.63"	\$180.25
C2T1931F10CG1	19"	31.50"	185.06
C2T1936F10CG1	19"	36.00"	189.86
C2T1923F10BK1	19"	23.63"	180.25
C2T1931F10BK1	19"	31.50"	185.06
C2T1936F10BK1	19"	36.00"	189.86



### LEVELLING FEET

- Set of 4 levelling feet for Contempra enclosures.
- Contempra 2 frame includes 4 nylon base levelling feet.
- 4 levelling feet will support 800 lbs. max.

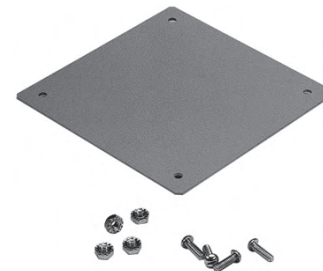
Cat. No.	Description	Net Price
CLFKNS	Non-skid rubber base	\$7.90
CLFK	Standard nylon base	7.05



### 4" MUFFIN FAN

- 115 Volt AC with ball bearing construction.
- Provides 105 CFM.
- Fan cord sold separately.
- UL recognized, CSA listed, CE certified.

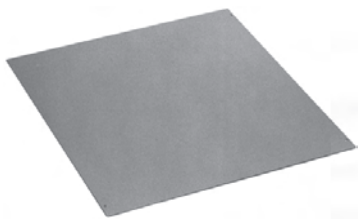
Cat. No.	Dimensions (LxWxH)	Net Price
DNMF100AC115	4.69x4.69x1.5	\$44.55



### CONTEMPRA 2 FAN COVER

- Constructed of 14 gauge steel.
- For covering unused fan too openings on 4.7" fan tops.
- Mounting hardware is included.
- Finished in rugged textured powder point.

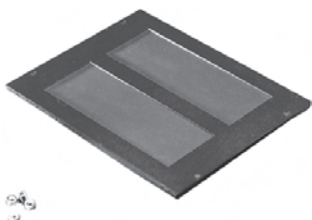
Cat. No.	Colour	Net Price
DNFPBK1	Black	\$12.02
DNFPCG1	Grey/Beige	12.02



## CONTEMPRA 2 SOLID BOTTOM

- Constructed of 14 gauge steel.
- For use when bottom of rack must be closed.
- Mounting hardware is included.

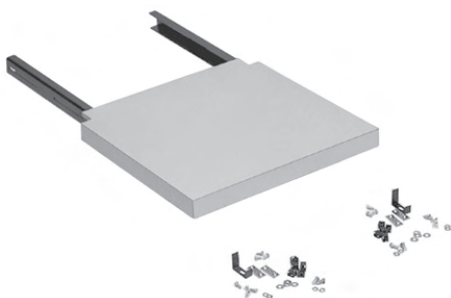
Cat. No.	Panel Width	Use for Rack Frame Depth	Net Price
<b>GREY/BEIGE</b>			
⚡ C2BPS1923CG1	19"	23.63"	\$32.92
⚡ C2BPS1931CG1	19"	31.5" or 36"	45.36
<b>BLACK</b>			
⚡ C2BPS1923BK1	19"	23.63"	32.92
⚡ C2BPS1931BK1	19"	31.5" or 36"	45.36



## MICRO CELL CABLE ENTRY BOTTOM

- Constructed of 14 gauge steel.
- Features 2 cutouts for cable access.
- Underside of cutouts covered with black foam rubber which, when punctured for cable access, still maintains a virtually sealed bottom.
- Mounting hardware is included.

Cat. No.	Panel Width	Use for Rack Frame Depth	Cutout Size (2 cutouts)	Net Price
<b>GREY/BEIGE</b>				
⚡ C2BPCE1923CG1	19"	23.63"	11.93" x 3.5"	\$78.21
⚡ C2BPCE1931CG1	19"	31.5" or 36"	11.93" x 6"	104.00
<b>BLACK</b>				
⚡ C2BPCE1923BK1	19"	23.63"	11.93" x 3.5"	78.21
⚡ C2BPCE1931BK1	19"	31.5" or 36"	11.93" x 6"	104.00



## CONTEMPRA 2 DESK UNIT

- Constructed of beige laminate (CG4) and 14 gauge steel support channels.
- Ideal for writing surface, keyboard, or instrument mounting requirements.
- Mounts onto rails, but is notched on both sides permitting it to be flush with cabinet sides.
- Mounting hardware is included.

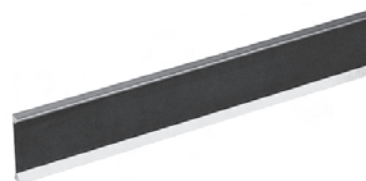
Cat. No.	For Panel Width	Net Price
⚡ CW19CG4	19	\$525.09



## CONTEMPRA 2 GANGING KIT

- Complete hardware kit allowing two racks to be ganged at six points along vertical frame side.

Cat. No.	Net Price
⚡ CGH01	\$66.24



## CONTEMPRA 2 TRIM KIT

- Attractive extruded aluminum dress kit with black inlay.
- Horizontal inlay provides an excellent surface for custom identification.
- Covers the horizontal top of the frame face.
- Attaches to the cabinet with a strong adhesive requiring no drilling or hardware.
- Compatible with flush doors only.

Cat. No.	For Panel Width	Net Price
⚡ C2ID19	19	\$79.80



## CONTEMPRA 2 GROUND BUS BARS

- Full length copper strip 0.13" x 0.63".
- Includes hardware for mounting on side struts.
- Mounting hardware is included.

Cat. No.	Panel Height		Use with Rack Frame	Net Price
	Inches	Units		
⚡ CBB35	35	20	C2F1935...	\$67.99
⚡ CBB42	42	24	C2F1942...	72.73
⚡ CBB49	49	28	C2F1949...	78.31
⚡ CBB56	56	32	C2F1956...	84.40
⚡ CBB63	63	36	C2F1963...	89.51
⚡ CBB70	70	40	C2F1970...	98.26
⚡ CBB78	78	45	C2F1978...	111.35
⚡ CBB85	85	49	C2F1985...	120.07

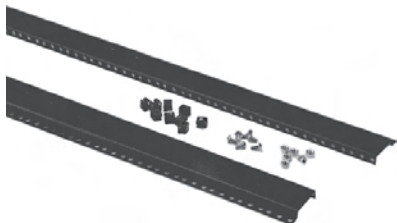


Continued on next page....

## CASTERS

- No drilling required.
- Mounts into existing holes in "Contempra" racks.
- Swivel, ball bearing units, hard composition type wheels.
- Adds only .75" to height of cabinet by fitting up inside base of rack.
- 3" wheel diameter.
- Sold in sets of 4.
- Includes mounting hardware.

Cat. No.	Mfg. Specified Capacity (Set of 4)	Net Price
1425B	360 lbs.	\$64.87
1425BM	700 lbs.	79.25
1425BH	1050 lbs.	147.98



## COMBINATION RAILS

- 10 gauge steel construction.
- Drilled and tapped with full EIA hole centers.
- Front of rail allows for 19" panel rack mounting.
- Rear of rail flanged for rear support or accessory mounting.
- Sold in pairs.
- Mounting hardware included.

Cat. No.	For Panel Height		Net Price
	Inches	Units	

### ZINC PLATED

CCR35TZPL	35.00	20	\$84.00
CCR42TZPL	42.00	24	89.27
CCR49TZPL	49.00	28	95.20
CCR56TZPL	56.00	32	101.38
CCR63TZPL	63.00	36	109.96
CCR70TZPL	70.00	40	120.27
CCR78TZPL	78.75	45	122.04
CCR85TZPL	85.75	49	136.20



## REFK SERIES ECONOMY KNOCKDOWN RACK

### APPLICATION:

- Provides an economical option in a sturdy electronic cabinet.
- Suitable for many 19" installations.
- Delivered in a knockdown package, field assembly is extremely simple as one bolt in each corner locks the sides to the top and bottom.
- Engineered for use as a solid, single, free-standing unit.

### STANDARDS:

- EIA RS-310-D.

### CONSTRUCTION:

- Standard 19" panel width (21.34" overall width).
- 16 gauge steel is used for knockdown frame—top, bottom, and sides.
- 8 bolt assembly—top and bottom affix to sides.
- 4 infinitely adjustable combination rack mount rails with EIA spacing drilled & tapped for 10-32 screws.
- Rails are 10 gauge steel with zinc plated finish.
- Removable gland plate (over 10" opening) with knockouts on rear bottom of rack for easy cable access.
- Four adjustable levelling feet are standard.
- Recommended maximum weight load is 1000 lbs.

### FINISH:

- Powder paint.

### ACCESSORIES:

- Blowers.
- Casters.
- Doors.
- Extra mounting rails.
- Fans.
- Fan trays.
- ID cowlings.
- Rack mount desk.
- 19" rack mount accessories.

Cat. No.	Panel Height		Dimensions			Ship Wt. Lbs.	Net Price
	Inches	Units	A	B	C		

### GREY/BEIGE—TEXTURED FINISH

REFK1903524CG1	35	20	40.19	21.06	24.5	103	\$518.23
REFK1904224CG1	42	24	47.19	21.06	24.5	111	557.34
REFK1904924CG1	49	28	54.19	21.06	24.5	126	635.58
REFK1905624CG1	56	32	61.19	21.06	24.5	136	674.66
REFK1906324CG1	63	36	68.19	21.06	24.5	145	704.01
REFK1907024CG1	70	40	75.19	21.06	24.5	160	782.25
REFK1907724CG1	78.75	45	82.19	21.06	24.5	185	817.44

### BLACK—TEXTURED FINISH

REFK1903524BK1	35	20	40.19	21.06	24.5	103	518.23
REFK1904224BK1	42	24	47.19	21.06	24.5	111	557.34
REFK1904924BK1	49	28	54.19	21.06	24.5	126	635.58
REFK1905624BK1	56	32	61.19	21.06	24.5	136	674.66
REFK1906324BK1	63	36	68.19	21.06	24.5	145	704.01
REFK1907024BK1	70	40	75.19	21.06	24.5	160	782.25
REFK1907724BK1	78.75	45	82.19	21.06	24.5	185	817.44

### GREY—SMOOTH FINISH

REFK1903524GY2	35	20	40.19	21.06	24.5	103	518.23
REFK1904224GY2	42	24	47.19	21.06	24.5	111	557.34
REFK1904924GY2	49	28	54.19	21.06	24.5	126	635.58
REFK1905624GY2	56	32	61.19	21.06	24.5	136	674.66
REFK1906324GY2	63	36	68.19	21.06	24.5	145	704.01
REFK1907024GY2	70	40	75.19	21.06	24.5	160	782.25
REFK1907724GY2	78.75	45	82.19	21.06	24.5	185	817.44



## FLUSH SOLID DOOR

- 16 gauge steel.
- Features lockable latch and spring loaded hinge pins for instant installation or removal.
- Mounts within the panel space flush with the frame.
- Opens either left or right by inverting.
- Allows access to space between panel rails when open (17.8").
- Mounting hardware is included.
- Integral stiffeners provide sturdiness.
- Finished in rugged textured powder paint.

Continued on next page....

# Hammond Electronic Rack Packaging

MANU  
195  
CODE

Cat. No.	Panel Height		Use with Frame	Ship Wt. Lbs.	Net Price
	Inches	Units			
<b>GREY/BEIGE—TEXTURED FINISH</b>					
RSDP19035CG1	35.00	20	REFK19035CG1	13	\$136.90
RSDP19042CG1	42.00	24	REFK19042CG1	18	161.37
RSDP19049CG1	49.00	28	REFK19049CG1	26	178.92
RSDP19056CG1	56.00	32	REFK19056CG1	30	195.56
RSDP19063CG1	63.00	36	REFK19063CG1	33	215.40
RSDP19070CG1	70.00	40	REFK19070CG1	37	219.03
RSDP19077CG1	77.00	44	REFK19077CG1	41	236.65

<b>BLACK—TEXTURED FINISH</b>					
RSDP19035BK1	35.00	20	REFK19035BK1	13	136.90
RSDP19042BK1	42.00	24	REFK19042BK1	18	161.37
RSDP19049BK1	49.00	28	REFK19049BK1	26	178.92
RSDP19056BK1	56.00	32	REFK19056BK1	30	195.56
RSDP19063BK1	63.00	36	REFK19063BK1	33	207.32
RSDP19070BK1	70.00	40	REFK19070BK1	37	219.03
RSDP19077BK1	77.00	44	REFK19077BK1	41	236.65

<b>GREY—SMOOTH FINISH</b>					
RSDP19035GY2	35.00	20	REFK19035GY2	13	136.90
RSDP19042GY2	42.00	24	REFK19042GY2	18	161.37
RSDP19049GY2	49.00	28	REFK19049GY2	26	178.92
RSDP19056GY2	56.00	32	REFK19056GY2	30	195.56
RSDP19063GY2	63.00	36	REFK19063GY2	33	207.32
RSDP19070GY2	70.00	40	REFK19070GY2	37	219.03
RSDP19077GY2	77.00	44	REFK19077GY2	41	236.65



## REFK FLUSH LOUVERED DOOR

- 16 gauge steel.
- Features lockable latch.
- Spring loaded hinge pins for instant installation or removal.
- Mounts within the panel space flush with the frame.
- Recessed handle.
- Opens right hand only with louver vents facing down.
- Allows access to space between panel rails when open (17.8").
- Mounting hardware is included.
- Integral stiffeners provide sturdiness.
- Finished in rugged textured powder paint.

Cat. No.	Panel Height		Use with Frame	Ship Wt. Lbs.	Net Price
	Inches	Units			
<b>GREY/BEIGE—TEXTURED FINISH</b>					
RSDL19035CG1	35.00	20	REFK19035CG1	13	\$155.21
RSDL19042CG1	42.00	24	REFK19042CG1	18	177.36
RSDL19049CG1	49.00	28	REFK19049CG1	26	199.59
RSDL19056CG1	56.00	32	REFK19056CG1	30	218.59
RSDL19063CG1	63.00	36	REFK19063CG1	33	237.58
RSDL19070CG1	70.00	40	REFK19070CG1	37	253.42
RSDL19077CG1	77.00	44	REFK19077CG1	41	269.29

<b>BLACK—TEXTURED FINISH</b>					
RSDL19035BK1	35.00	20	REFK19035BK1	13	155.21
RSDL19042BK1	42.00	24	REFK19042BK1	18	177.36
RSDL19049BK1	49.00	28	REFK19049BK1	26	199.59
RSDL19056BK1	56.00	32	REFK19056BK1	30	218.59
RSDL19063BK1	63.00	36	REFK19063BK1	33	237.58
RSDL19070BK1	70.00	40	REFK19070BK1	37	253.42
RSDL19077BK1	77.00	44	REFK19077BK1	41	269.29

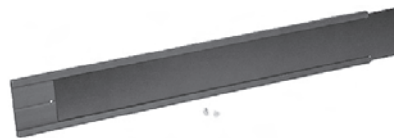
<b>GREY—SMOOTH FINISH</b>					
RSDL19035GY2	35.00	20	REFK19035GY2	13	155.21
RSDL19042GY2	42.00	24	REFK19042GY2	18	177.36
RSDL19049GY2	49.00	28	REFK19049GY2	26	199.59
RSDL19056GY2	56.00	32	REFK19056GY2	30	218.59
RSDL19063GY2	63.00	36	REFK19063GY2	33	237.58
RSDL19070GY2	70.00	40	REFK19070GY2	37	253.42
RSDL19077GY2	77.00	44	REFK19077GY2	41	269.29



## REFK FLUSH PLEXI DOOR

- Constructed of metal frame with a black textured finish and smoked grey plexi.
- Features lockable latch & spring loaded hinge pins for instant installation or removal.
- Reversible for either right or left hand mounting.
- Allows full access to space between panel rails when open (17.8").
- Mounting hardware is included.
- Finished in rugged textured powder paint.

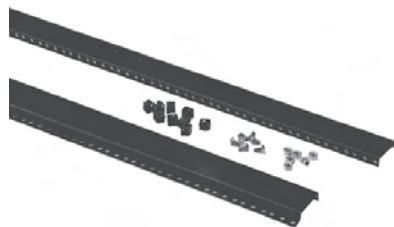
Cat. No.	Panel Height		Use With Frame	Ship Wt. Lbs.	Net Price
	Inches	Units			
REDFP19035BK1	35.00	20	REFK19035...	15	\$302.07
REDFP19042BK1	42.00	24	REFK29042...	17	317.96
REDFP19049BK1	49.00	28	REFK29049...	19	333.87
REDFP19056BK1	56.00	32	REFK19056...	23	355.07
REDFP19063BK1	63.00	36	REFK19063...	27	376.27
REDFP19077BK1	77.00	44	REFK19077...	33	455.73



## ID COWLING

- For use with **flush** (solid or louvered) doors only.
- Allows face of top section to be covered with an identification strip.
- Each cowling comes with 1 painted steel sign panel, 1 clear protective polycarbonate panel and 1 black ABS extrusion.
- Mounting hardware is included.

Cat. No.	For Panel Width	Net Price
RSAC19CG1	19	\$31.31



## COMBINATION RAILS

- 10 gauge steel construction.
- Drilled and tapped with full EIA hole centers.
- Front of rail allows for 19" panel rack mounting.
- Rear of rail flanged for rear support or accessory mounting.
- Sold in pairs.
- Mounting hardware included.

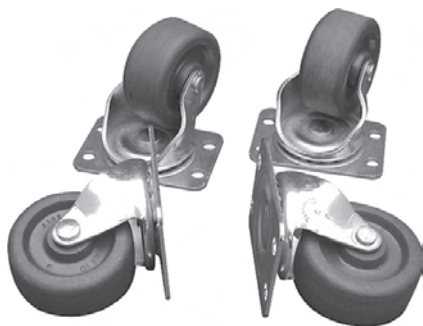
Cat. No.	Panel Height of Rack		Net Price
	Inches	Units	
<b>ZINC PLATED</b>			
CCR35TZPL	35.00	20	\$84.00
CCR42TZPL	42.00	24	89.27
CCR49TZPL	49.00	28	95.20
CCR56TZPL	56.00	32	101.38
CCR63TZPL	63.00	36	109.96
CCR70TZPL	70.00	40	120.27

908

PARTS INDICATED WITH A LEAF ARE CONSIDERED RoHS JULY 2006 COMPLIANT BASED ON THE MANUFACTURER'S CONFIRMATION AT THE TIME OF PUBLISHING. PRICES SUBJECT TO CHANGE WITHOUT NOTICE, APPLICABLE TAXES NOT INCLUDED

electro sonic





## HEAVY DUTY CASTERS

### FEATURES:

- Set of 4 medium duty casters—four bolt mounting to hole pattern in base of REFK series rack only (2" wheel diameter).
- No drilling required.
- Features ball bearing swivel and hard composition wheels.
- Small foot print 2.125" x 15/16" hole mounting pattern.
- Hard composition grey wheels (adds 3/8" to rack height).
- Manufacturer's specified capacity—600 pounds.
- Includes mounting hardware.

Cat. No.	Net Price
1425PHD	\$64.70



## CASTERS

- Casters supplied in a set of 4.
- Features a manufacturer's specified capacity of 400 lbs. per set.
- Constructed of twin nylon swivel wheels with zinc axles and hoods.
- Wheel has a 2.37" dia. with a final mounting height of 2.75". 5/16-18 threaded stem mounts into existing holes in base.

Cat. No.	Net Price
1425P	\$32.74



## LIGHT-DUTY WELDED STEEL RACK

### APPLICATION:

- Suitable for many 19" applications, providing complete access to equipment.
- Provides an economical option to an enclosed rack.
- Welded construction.
- Engineered for use as a solid, single, free-standing unit.

### STANDARDS:

- EIA RS-310-D.
- Weight load tested to 840 lbs.

### CONSTRUCTION:

- Constructed of 12 gauge steel.
- EIA spacing is standard on the **front flange only**.
- Holes are drilled and tapped 10-32.
- Base is punched to accept four casters.



### FINISH:

- Finished in black textured powder paint.

### ACCESSORIES:

- 19" rack mount accessories.

Cat. No.	Panel Height		Panel Width	Overall Height	Ship Wt. Lbs.	Net Price
	Inches	Units				
DNRR42LDW	42	24	19	44.6	38	\$226.13
DNRR63LDW	63	36	19	65.6	41	251.53
DNRR70LDW	70	40	19	72.6	42	254.87
DNRR77LDW	77	44	19	79.6	45	266.07
DNRR84LDW	84	48	19	86.6	47	271.44



## HEAVY-DUTY WELDED STEEL RACK

### APPLICATIONS:

- Suitable for many 19" applications, providing complete access to equipment.
- Provides an economical, extremely sturdy option to an enclosed rack.
- Welded construction.
- Engineered for use as a solid, single, free-standing unit.

### STANDARDS:

- EIA RS-310-D.
- Weight load tested to 1,530 lbs.

### CONSTRUCTION:

- Constructed of 10 gauge steel.
- EIA spacing is standard on the **front flange only**.
- Holes are drilled and tapped 10-32.

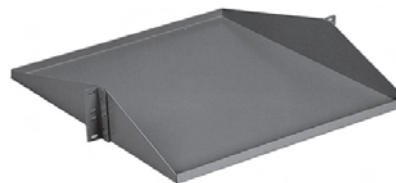
### FINISH:

- Finished in black textured powder paint.

### ACCESSORIES:

- Heavy duty dolly—1424T.
- 19" rack mount accessories.

Cat. No.	Panel Height		Panel Width	Overall Height	Ship Wt. Lbs.	Net Price
	Inches	Units				
DNRR42HDW	42	24	19"	48.13	65	\$273.82
DNRR63HDW	63	36	19"	69.13	77	306.02
DNRR70HDW	70	40	19"	76.13	80	310.76
DNRR77HDW	77	44	19"	83.13	82	322.13
DNRR84HDW	84	48	19"	90.13	87	326.64



## RAIL MOUNTED DUAL MODEM SHELVES

- Formed 16 gauge steel construction.
- Permits convenient front and rear access to modems on relay racks.
- Rugged powder paint finish.
- Overall 19.5" deep.
- Mounting hardware not included, please order separately.
- Uses 3.5" (2U) of panel space.

Cat. No.	Colour	Net Price
<b>UNVENTED SHELF</b>		
DNDMS19BK1	Black	\$81.08
DNDMS19GY2	ASA 61 Grey	81.08
<b>VENTED SHELF</b>		
DNDMV19BK1	Black	81.08
DNDMV19GY2	ASA 61 Grey	81.08

# Hammond Electronic Rack Packaging

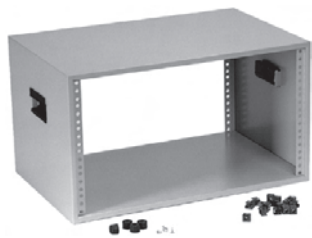
MANU  
195  
CODE



## HEAVY DUTY DOLLY

- 10 gauge folded and welded steel.
- Finished in black textured powder paint.
- For use with DNRR—HDW rack only.
- Complete with 4-2.0" diameter casters.
- Manufacturer's specified capacity of 600 lbs.

Cat. No.	Net Price
1424T	\$284.76



## RCBS SERIES DESKTOP CASE

### APPLICATIONS:

- A compact desktop case that is suitable for small scale 19" mounting requirements.
- Complete with handles for added portability.

### STANDARDS:

- EIA RS-310-D.
- Recommended maximum weight load—600 lbs.

### CONSTRUCTION:

- Fabricated with 16 gauge steel forming a non-vented body.
- Rails are fixed to case and feature punched EIA spacing at the front and rear.
- Designed to accept standard 19" equipment.
- Black ABS handles, rubber feet and 10-32 clip nuts are included.

### FINISH:

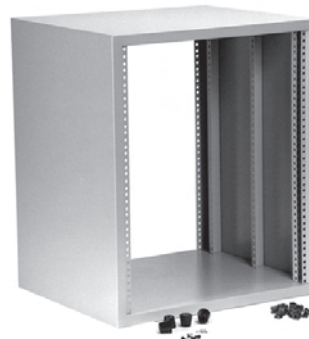
- Finished in Beige (CG1), grey (GY2), and black (BK1) powder paint.

### ACCESSORIES:

- Tilt bases.
- 19" rack mount accessories.



Cat. No.	Panel Height		Overall Dimensions (Inches)			Ship Wt. Lbs.	Net Price
	Inches	Units	H	W	D		
<b>GREY ASA 61 SMOOTH FINISH</b>							
RCBS1900313GY2	3.50	2	5.50	21.00	13.0	13	\$117.49
RCBS1900513GY2	5.25	3	7.25	21.00	13.0	15	126.42
RCBS1900517GY2	5.25	3	7.25	21.00	17.5	16	151.33
RCBS1900713GY2	7.00	4	9.00	21.00	13.0	16	136.71
RCBS1900717GY2	7.00	4	9.00	21.00	17.5	19	176.24
RCBS1900813GY2	8.75	5	10.75	21.00	13.0	16	154.89
RCBS1900817GY2	8.75	5	10.75	21.00	17.5	22	210.07
RCBS1901013GY2	10.50	6	12.50	21.00	13.0	17	162.02
RCBS1901017GY2	10.50	6	12.50	21.00	17.5	22	222.53
RCBS1901213GY2	12.25	7	14.25	21.00	13.0	17	176.24
RCBS1901217GY2	12.25	7	14.25	21.00	17.5	27	243.91
RCBS1901413GY2	14.00	8	16.00	21.00	13.0	17	220.76
RCBS1901417GY2	14.00	8	16.00	21.00	17.5	30	249.22



## RCHS SERIES DESKTOP CASE

### APPLICATION:

- A larger desktop case that is suitable for more substantial, permanent 19" desktop mounting requirements.

### STANDARDS:

- EIA RS-310-D.

### CONSTRUCTION:

- Fabricated with 16 gauge steel forming a non-vented body.
- Rails are fixed to case and feature punched EIA spacing at the front and rear.
- Designed to accept standard 19" equipment.
- Includes rubber feet, black ABS handles and 10-32 clip nuts.
- Recommended maximum weight load—800 lbs.
- Finished in rugged textured powder paint.



Cat. No.	Panel Height		Overall Dimensions (Inches)			Ship Wt. Lbs.	Net Price
	Inches	Units	H	W	D		

### GREY/BEIGE TEXTURED FINISH

RCBS1900313CG1	3.50	2	5.50	21.00	13.0	13	\$117.49
RCBS1900513CG1	5.25	3	7.25	21.00	13.0	15	126.42
RCBS1900517CG1	5.25	3	7.25	21.00	17.5	16	151.33
RCBS1900713CG1	7.00	4	9.00	21.00	13.0	16	136.71
RCBS1900717CG1	7.00	4	9.00	21.00	17.5	19	176.24
RCBS1900813CG1	8.75	5	10.75	21.00	13.0	16	154.89
RCBS1900817CG1	8.75	5	10.75	21.00	17.5	22	210.07
RCBS1901013CG1	10.50	6	12.50	21.00	13.0	17	162.02
RCBS1901017CG1	10.50	6	12.50	21.00	17.5	22	222.53
RCBS1901213CG1	12.25	7	14.25	21.00	13.0	17	176.24
RCBS1901217CG1	12.25	7	14.25	21.00	17.5	27	243.91
RCBS1901413CG1	14.00	8	16.00	21.00	13.0	17	220.76
RCBS1901417CG1	14.00	8	16.00	21.00	17.5	30	249.22

### BLACK TEXTURED FINISH

RCBS1900313BK1	3.50	2	5.50	21.00	13.0	13	117.49
RCBS1900513BK1	5.25	3	7.25	21.00	13.0	15	126.42
RCBS1900517BK1	5.25	3	7.25	21.00	17.5	16	151.33
RCBS1900713BK1	7.00	4	9.00	21.00	13.0	16	136.71
RCBS1900717BK1	7.00	4	9.00	21.00	17.5	19	176.24
RCBS1900813BK1	8.75	5	10.75	21.00	13.0	16	154.89
RCBS1900817BK1	8.75	5	10.75	21.00	17.5	22	210.07
RCBS1901013BK1	10.50	6	12.50	21.00	13.0	17	162.02
RCBS1901017BK1	10.50	6	12.50	21.00	17.5	22	222.53
RCBS1901213BK1	12.25	7	14.25	21.00	13.0	17	176.24
RCBS1901217BK1	12.25	7	14.25	21.00	17.5	27	243.91
RCBS1901413BK1	14.00	8	16.00	21.00	13.0	17	220.76
RCBS1901417BK1	14.00	8	16.00	21.00	17.5	30	249.22

Cat. No.	Panel Height		Overall Dimensions (Inches)			Ship Wt. Lbs.	Net Price
	Inches	Units	H	W	D		

### GREY/BEIGE TEXTURED FINISH

RCHS1900817CG1	8.75	5	10.75	21	17.5	28	\$227.78
RCHS1901017CG1	10.50	6	12.50	21	17.5	28	263.42
RCHS1901024CG1	10.50	6	12.50	21	24.5	28	354.71
RCHS1901417CG1	14.00	8	16.00	21	17.5	30	269.69
RCHS1901424CG1	14.00	8	16.00	21	24.5	32	373.36
RCHS1901717CG1	17.50	10	19.50	21	17.5	32	280.04
RCHS1901724CG1	17.50	10	19.50	21	24.5	43	385.82
RCHS1902217CG1	22.75	13	24.75	21	17.5	38	304.93
RCHS1902224CG1	22.75	13	24.75	21	24.5	50	398.27
RCHS1902817CG1	28.00	16	30.00	21	17.5	42	358.42
RCHS1902824CG1	28.00	16	30.00	21	24.5	56	414.82

### BLACK TEXTURED FINISH

RCHS1900817BK1	8.75	5	10.75	21	17.5	28	227.78
RCHS1901017BK1	10.50	6	12.50	21	17.5	28	263.42
RCHS1901024BK1	10.50	6	12.50	21	24.5	28	354.71
RCHS1901417BK1	14.00	8	16.00	21	17.5	30	269.69
RCHS1901424BK1	14.00	8	16.00	21	24.5	32	373.36
RCHS1901717BK1	17.50	10	19.50	21	17.5	32	280.04
RCHS1901724BK1	17.50	10	19.50	21	24.5	43	385.82
RCHS1902217BK1	22.75	13	24.75	21	17.5	38	304.93
RCHS1902224BK1	22.75	13	24.75	21	24.5	50	398.27
RCHS1902817BK1	28.00	16	30.00	21	17.5	42	358.42
RCHS1902824BK1	28.00	16	30.00	21	24.5	56	414.82

910

PARTS INDICATED WITH A LEAF ARE CONSIDERED RoHS JULY 2006 COMPLIANT BASED ON THE MANUFACTURER'S CONFIRMATION AT THE TIME OF PUBLISHING. PRICES SUBJECT TO CHANGE WITHOUT NOTICE, APPLICABLE TAXES NOT INCLUDED

electrosonic



**TABLE TOP RELAY RACK**

- 14 gauge steel.
- 19" panel width.
- Full EIA spacing.
- Round hole punched for 10-32 clip nuts (included).
- Includes 4 rubber feet.
- Shipped unassembled.
- All assembly hardware included.
- Painted black textured powder paint.
- Recommended maximum weight load—350 lbs.

Cat. No.	Panel Height		Overall Dimensions (Inches)			Net Price
	Inches	Units	Height	Width	Base Depth	
RRTT1921BK1	21.00	12	24	20.38	12	\$132.18
RRTT1928BK1	28.00	16	31	20.38	12	144.20



**1459 SERIES OPEN TABLE CASE/WALL RACK**

**APPLICATION:**

- An economical case that is suitable for more substantial, permanent 19" desktop or wall mounting requirements.

**STANDARDS:**

- EIA RS-310-D.
- Recommended maximum weight load—800 lbs.

**CONSTRUCTION:**

- Pre-drilled for flat side panels (optional).
- Comes with rubber feet for table mounting.
- Fabricated with 16 gauge welded steel forming an open frame allowing for easy access from top, bottom, sides, front and rear.
- Removable top and bottom panels are included with the frame (shipped assembled).
- Rear has keyholes for ease of wall mounting.
- Rails are fixed to case and feature punched EIA spacing at the front.
- Designed to accept standard 19" equipment.
- Overall width 21.12", overall depth 16.14".

**FINISH:**

- Finished in beige (CG1), grey (GY2), or black (BK1) powder paint.

**ACCESSORIES:**

- Side panels.
- 19" rack mount accessories.

Cat. No.	Case Panel Height		Case Overall Height	Case Ship Wt. Lbs.	Net Price
	Inches	Units			
<b>BEIGE CASE</b>					
1459FCG1	22.75	13	24.7	25	\$243.18
1459JCG1	33.25	19	35.2	30	291.09
1459MCG1	47.25	27	49.2	35	341.51



Cat. No.	Case Panel Height		Case Overall Height	Case Ship Wt. Lbs.	Net Price
	Inches	Units			
<b>GREY CASE</b>					
1459FGY2	22.75	13	24.7	25	\$243.18
1459JGY2	33.25	19	35.2	30	291.09
1459MGY2	47.25	27	49.2	35	341.51
<b>BLACK CASE</b>					
1459FBK1	22.75	13	24.7	25	243.18
1459JBK1	33.25	19	35.2	30	291.09
1459MBK1	47.25	27	49.2	35	341.51



**1459 SIDE PANELS**

- Flat steel side panel.
- Finished in beige (CG1), grey (GY2), or black (BK1) powder paint.
- Packaged in pairs.
- Fastened with 6 screws (each side).



Cat. No.	Use With Frame	Ship Wt. Lbs.	Net Price
<b>BEIGE—SIDE PANELS</b>			
1459FCG1	1459FCG1	15	\$126.00
1459JCG1	1459JCG1	20	139.58
1459MCG1	1459MCG1	30	199.20
<b>GREY—SIDE PANELS</b>			
1459FGY2	1459FGY2	15	126.00
1459JGY2	1459JGY2	20	139.58
1459MGY2	1459MGY2	30	199.20
<b>BLACK—SIDE PANELS</b>			
1459FBK1	1459FBK1	15	126.00
1459JBK1	1459JBK1	20	139.58
1459MBK1	1459MBK1	30	199.20



**STEEL RACK PANELS**

- Standard 19" rack panels.
- Strong 14 gauge steel, (.075" thick).
- More economical than aluminum.
- Powder paint finish.
- Standard punching on both ends.
- Requires mounting hardware.



Cat. No.	Panel Height		No. of Slots	Net Price
	Inches	Units		
<b>GREY/BEIGE SMOOTH FINISH</b>				
PBPS19001CG2	1.75	1	4	\$9.78
PBPS19003CG2	3.50	2	4	10.89
PBPS19005CG2	5.25	3	4	14.35
PBPS19007CG2	7.00	4	4	17.41
PBPS19008CG2	8.75	5	4	19.58
PBPS19010CG2	10.50	6	8	22.82
PBPS19012CG2	12.25	7	8	25.22
PBPS19014CG2	14.00	8	8	34.81
PBPS19015CG2	15.75	9	8	38.92
PBPS19017CG2	17.50	10	8	42.61
PBPS19019CG2	19.25	11	8	48.26
PBPS19021CG2	21.00	12	8	44.57
PBPS19022CG2	22.75	13	8	46.31
PBPS19024CG2	24.50	14	10	48.71
PBPS19026CG2	26.25	15	10	54.15
PBPS19028CG2	28.00	16	12	65.24
PBPS19029CG2	29.75	17	12	67.41
PBPS19031CG2	31.50	18	12	68.49

Continued on next page...

# Hammond Electronic Rack Packaging

MANU  
195  
CODE

Cat. No.	Panel Height		No. of Slots	Net
	Inches	Units		
<b>GREY—ASA 61 SMOOTH FINISH</b>				
PBPS19001GY2	1.75	1	4	\$10.18
PBPS19003GY2	3.50	2	4	11.33
PBPS19005GY2	5.25	3	4	14.96
PBPS19007GY2	7.00	4	4	18.13
PBPS19008GY2	8.75	5	4	20.38
PBPS19010GY2	10.50	6	8	23.76
PBPS19012GY2	12.25	7	8	26.24
PBPS19014GY2	14.00	8	8	36.24
PBPS19015GY2	15.75	9	8	40.53
PBPS19017GY2	17.50	10	8	44.38
PBPS19019GY2	19.25	11	8	45.27
PBPS19021GY2	21.00	12	8	46.42
PBPS19022GY2	22.75	13	8	48.22
PBPS19024GY2	24.50	14	10	50.73
PBPS19026GY2	26.25	15	10	56.38
PBPS19028GY2	28.00	16	12	67.93
PBPS19029GY2	29.75	17	12	70.18
PBPS19031GY2	31.50	18	12	71.31

<b>BLACK SMOOTH FINISH</b>				
PBPS19001BK2	1.75	1	4	10.18
PBPS19003BK2	3.50	2	4	11.33
PBPS19005BK2	5.25	3	4	14.96
PBPS19007BK2	7.00	4	4	18.13
PBPS19008BK2	8.75	5	4	20.38
PBPS19010BK2	10.50	6	8	23.76
PBPS19012BK2	12.25	7	8	26.24
PBPS19014BK2	14.00	8	8	36.24
PBPS19015BK2	15.75	9	8	40.53
PBPS19017BK2	17.50	10	8	44.38
PBPS19019BK2	19.25	11	8	45.27
PBPS19021BK2	21.00	12	8	46.42
PBPS19022BK2	22.75	13	8	48.22
PBPS19024BK2	24.50	14	10	50.73
PBPS19026BK2	26.25	15	10	56.38
PBPS19028BK2	28.00	16	12	67.93
PBPS19029BK2	29.75	17	12	70.18
PBPS19031BK2	31.50	18	12	71.31

Cat. No.	Panel Height		No. of Slots	Net Price
	Inches	Units		
<b>GREY/BEIGE SMOOTH FINISH</b>				
PBPA19001CG2	1.75	1	4	\$11.56
PBPA19003CG2	3.50	2	4	17.02
PBPA19005CG2	5.25	3	4	24.29
PBPA19007CG2	7.00	4	4	30.36
PBPA19008CG2	8.75	5	4	35.93
PBPA19010CG2	10.50	6	8	40.49
PBPA19012CG2	12.25	7	8	48.56
PBPA19014CG2	14.00	8	8	54.64
PBPA19015CG2	15.75	9	8	58.71
PBPA19017CG2	17.50	10	8	66.84
PBPA19019CG2	19.25	11	8	77.44
PBPA19021CG2	21.00	12	8	83.00
PBPA19022CG2	22.75	13	8	88.07
PBPA19024CG2	24.50	14	10	96.18
PBPA19026CG2	26.25	15	10	103.27
PBPA19028CG2	28.00	16	12	110.33
PBPA19029CG2	29.75	17	12	115.40
PBPA19031CG2	31.50	18	12	118.47

<b>GREY—ASA 61 SMOOTH FINISH</b>				
PBPA19001GY2	1.75	1	4	11.56
PBPA19003GY2	3.50	2	4	17.02
PBPA19005GY2	5.25	3	4	24.29
PBPA19007GY2	7.00	4	4	30.36
PBPA19008GY2	8.75	5	4	35.93
PBPA19010GY2	10.50	6	8	40.49
PBPA19012GY2	12.25	7	8	48.56
PBPA19014GY2	14.00	8	8	54.64
PBPA19015GY2	15.75	9	8	58.71
PBPA19017GY2	17.50	10	8	66.84
PBPA19019GY2	19.25	11	8	77.44
PBPA19021GY2	21.00	12	8	83.00
PBPA19022GY2	22.75	13	8	88.07
PBPA19024GY2	24.50	14	10	96.18
PBPA19026GY2	26.25	15	10	103.27
PBPA19028GY2	28.00	16	12	110.33
PBPA19029GY2	29.75	17	12	115.40
PBPA19031GY2	31.50	18	12	118.47

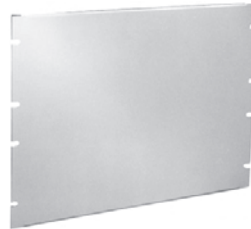
<b>BLACK SMOOTH FINISH</b>				
PBPA19001BK2	1.75	1	4	11.56
PBPA19003BK2	3.50	2	4	17.02
PBPA19005BK2	5.25	3	4	24.29
PBPA19007BK2	7.00	4	4	30.36
PBPA19008BK2	8.75	5	4	35.93
PBPA19010BK2	10.50	6	8	40.49
PBPA19012BK2	12.25	7	8	48.56
PBPA19014BK2	14.00	8	8	54.64
PBPA19015BK2	15.75	9	8	58.71
PBPA19017BK2	17.50	10	8	66.84
PBPA19019BK2	19.25	11	8	77.44
PBPA19021BK2	21.00	12	8	83.00
PBPA19022BK2	22.75	13	8	88.07
PBPA19024BK2	24.50	14	10	96.18
PBPA19026BK2	26.25	15	10	103.27
PBPA19028BK2	28.00	16	12	110.33
PBPA19029BK2	29.75	17	12	115.40
PBPA19031BK2	31.50	18	12	118.47



## ALUMINUM RACK PANELS

- Standard 19" rack panels.
- 0.125" thick easy to machine aluminum.
- Painted versions have a power paint finish.
- Standard punching on both ends.
- Requires mounting hardware.
- Unfinished version is paper covered on one side.

Cat. No.	Panel Height		No. of Slots	Net Price
	Inches	Units		
<b>UNFINISHED</b>				
PBPA19001UNF	1.75	1	4	\$11.56
PBPA19003UNF	3.50	2	4	17.02
PBPA19005UNF	5.25	3	4	24.29
PBPA19007UNF	7.00	4	4	30.36
PBPA19008UNF	8.75	5	4	35.93
PBPA19010UNF	10.50	6	8	40.49
PBPA19012UNF	12.25	7	8	48.56
PBPA19014UNF	14.00	8	8	54.64
PBPA19015UNF	15.75	9	8	58.71
PBPA19017UNF	17.50	10	8	66.84
PBPA19019UNF	19.25	11	8	77.44
PBPA19021UNF	21.00	12	8	83.00
PBPA19022UNF	22.75	13	8	88.07
PBPA19024UNF	24.50	14	10	96.18
PBPA19026UNF	26.25	15	10	103.27
PBPA19028UNF	28.00	16	12	110.33
PBPA19029UNF	29.75	17	12	115.40
PBPA19031UNF	31.50	18	12	118.47



## FORMED STEEL RACK PANELS

- Standard 19" rack panels.
- Strong 16 gauge steel, (.060" thick).
- A 0.50" fold top and bottom for added strength.
- Powder paint finish.
- Standard punching on both ends.
- Requires mounting hardware.

Continued on next page....



# Hammond Electronic Rack Packaging

MANU  
195  
CODE

Cat. No.	Panel Height		No. of Slots	Net Price
	Inches	Units		
<b>GREY/BEIGE SMOOTH FINISH</b>				
PBFS19001CG2	1.75	1	4	\$14.96
PBFS19003CG2	3.50	2	4	16.62
PBFS19005CG2	5.25	3	4	18.00
PBFS19007CG2	7.00	4	4	23.98
PBFS19008CG2	8.75	5	4	27.02
PBFS19010CG2	10.50	6	8	29.40
PBFS19012CG2	12.25	7	8	30.84
PBFS19014CG2	14.00	8	8	35.58
PBFS19015CG2	15.75	9	8	37.36
PBFS19017CG2	17.50	10	8	42.91
PBFS19019CG2	19.25	11	8	45.69
PBFS19021CG2	21.00	12	8	47.44
PBFS19022CG2	22.75	13	8	53.13
PBFS19024CG2	24.50	14	10	54.58
PBFS19026CG2	26.25	15	10	55.78
PBFS19028CG2	28.00	16	12	59.29
PBFS19029CG2	29.75	17	12	60.51
PBFS19031CG2	31.50	18	12	61.69

<b>GREY—ASA 61 SMOOTH FINISH</b>				
Cat. No.	Inches	Units	No. of Slots	Net Price
PBFS19001GY2	1.75	1	4	14.96
PBFS19003GY2	3.50	2	4	16.62
PBFS19005GY2	5.25	3	4	18.00
PBFS19007GY2	7.00	4	4	23.98
PBFS19008GY2	8.75	5	4	27.02
PBFS19010GY2	10.50	6	8	29.40
PBFS19012GY2	12.25	7	8	30.84
PBFS19014GY2	14.00	8	8	35.58
PBFS19015GY2	15.75	9	8	37.36
PBFS19017GY2	17.50	10	8	42.91
PBFS19019GY2	19.25	11	8	45.69
PBFS19021GY2	21.00	12	8	47.44
PBFS19022GY2	22.75	13	8	53.13
PBFS19024GY2	24.50	14	10	54.58
PBFS19026GY2	26.25	15	10	55.78
PBFS19028GY2	28.00	16	12	59.29
PBFS19029GY2	29.75	17	12	60.51
PBFS19031GY2	31.50	18	12	61.69

<b>BLACK SMOOTH FINISH</b>				
Cat. No.	Inches	Units	No. of Slots	Net Price
PBFS19001BK2	1.75	1	4	14.96
PBFS19003BK2	3.50	2	4	16.62
PBFS19005BK2	5.25	3	4	18.00
PBFS19007BK2	7.00	4	4	23.98
PBFS19008BK2	8.75	5	4	27.02
PBFS19010BK2	10.50	6	8	29.40
PBFS19012BK2	12.25	7	8	30.84
PBFS19014BK2	14.00	8	8	35.58
PBFS19015BK2	15.75	9	8	37.36
PBFS19017BK2	17.50	10	8	42.91
PBFS19019BK2	19.25	11	8	45.69
PBFS19021BK2	21.00	12	8	47.44
PBFS19022BK2	22.75	13	8	53.13
PBFS19024BK2	24.50	14	10	54.58
PBFS19026BK2	26.25	15	10	55.78
PBFS19028BK2	28.00	16	12	59.29
PBFS19029BK2	29.75	17	12	60.51
PBFS19031BK2	31.50	18	12	61.69



## HINGED DOOR PANEL

- Formed 14 gauge steel construction.
- Includes lock hasp and 2 keys.
- Door opening is 16.2" wide.
- Standard 19" rack mount.
- Requires mounting hardware.



Cat. No.	Panel Height		Units	Net Price
	Inches	Units		
<b>GREY/BEIGE—SMOOTH FINISH</b>				
PHPF19005CG2	5.25	3		\$48.98
PHPF19008CG2	8.75	5		55.62
PHPF19012CG2	12.25	7		63.44
<b>BLACK—SMOOTH FINISH</b>				
PHPF19005BK2	5.25	3		48.98
PHPF19008BK2	8.75	5		55.62
PHPF19012BK2	12.25	7		63.44



## STEEL CHASSIS WITH PANEL

- Formed 16 gauge steel construction.
- Chassis measures 17" wide and 3" deep.
- Special punching on chassis allows for both the chassis and panel to be mounted together.
- Finished in beige (CG2) or grey (GY2) powder paint.
- Mounting hardware not included, please order separately.
- Standard 19" rack mount.



Cat. No.	Panel Height		Chassis Height In.	Net Price
	Inches	Units		
5-350DCG2	3.50	2	3.1	\$41.10
5-525DCG2	5.25	3	4.9	33.29
<b>GREY</b>				
5-350DGY2	3.50	2	3.1	55.13
5-525DGY2	5.25	3	4.9	59.27

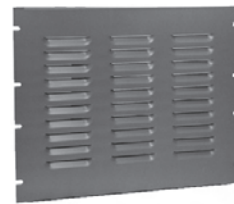


## ALUMINUM CHASSIS

- 0.06" thick aluminum construction.
- Chassis measures 17" wide and 5.25" deep.
- Finish is natural aluminum.
- Mounting hardware not included, please order separately.
- Standard 19" rack mount.



Cat. No.	Panel Height		Units	Net Price
	Inches	Units		
7-350D	3.50	2		\$32.39
7-525D	5.25	3		34.64

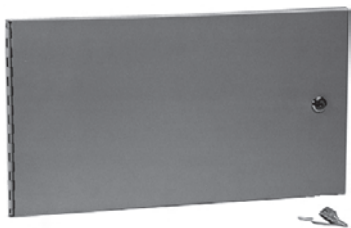


## LOUVERED PANEL

- Formed 16 gauge steel construction.
- Designed with 3 columns of four inch wide louvers.
- Louvers face out.
- Mounting hardware not included, please order separately.
- Finished in beige (CG2) or Black (BK2) powder paint.
- Standard 19" rack mount.
- Includes a .50" fold top and bottom for added strength.



Cat. No.	Panel Height		Units	Net Price
	Inches	Units		
<b>GREY/BEIGE—SMOOTH FINISH</b>				
PVLL19005CG2	5.25	3		\$35.36
PVLL19007CG2	7.00	4		37.96
PVLL19008CG2	8.75	5		42.80
PVLL19010CG2	10.50	6		45.24
PVLL19012CG2	12.25	7		45.47
<b>BLACK—SMOOTH FINISH</b>				
PVLL19005BK2	5.25	3		36.00
PVLL19007BK2	7.00	4		37.96
PVLL19008BK2	8.75	5		42.80
PVLL19010BK2	10.50	6		45.24
PVLL19012BK2	12.25	7		45.47

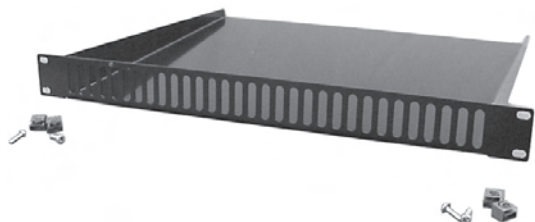


## PANEL RAIL DOOR

- Hinges bolt directly to the panel rail.
- Includes lock, hasp, and 2 keys.
- When door is open, space between the panel rails is completely accessible.
- Overall door depth (0.63") matches depth of **raised** panels.
- Mounting hardware not included.
- Finished in beige (CG2) and black (CG2) powder paint.
- Standard 19" rack mount.
- Formed 14 gauge steel construction, folded on all 4 sides.

Cat. No.	Panel Height		Net Price
	Inches	Units	
<b>GREY/BEIGE—SMOOTH FINISH</b>			
RSDP19010CG2	10.50	6	\$125.07
RSDP19012CG2	12.25	7	127.03
RSDP19014CG2	14.00	8	129.10
RSDP19017CG2	17.50	10	132.91
RSDP19022CG2	22.75	13	138.60
RSDP19028CG2	28.00	16	144.22

Cat. No.	Panel Height		Net Price
	Inches	Units	
<b>BLACK—SMOOTH FINISH</b>			
RSDP19010BK2	10.50	6	125.07
RSDP19012BK2	12.25	7	127.03
RSDP19014BK2	14.00	8	129.10
RSDP19017BK2	17.50	10	132.91
RSDP19022BK2	22.75	13	138.60
RSDP19028BK2	28.00	16	144.22



## BAFFLE PANEL

- Rear sloping aluminum baffle for directing air flow.
- Finished in rugged, heat absorbing black powder paint finish.
- Extends approximately 14" behind mounting rails.
- Mounting hardware not included, please order separately.
- Standard 19" rack mount.
- 16 gauge steel construction.

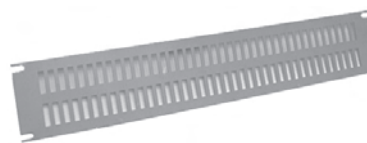
Cat. No.	Panel Height		Net Price
	Inches	Units	
PVBB19001BK2	1.75	1	\$56.80



## CABLE ENTRY PANEL

- Formed 16 gauge steel construction.
- Allows for easy entry of cables on front face of rack.
- Cutout opening has protected edge.
- Finished in textured powder paint.
- Mounting hardware not included, please order separately.
- Standard 19" rack mount.

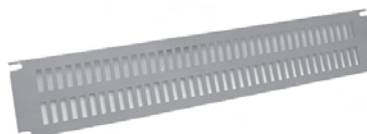
Cat. No.	Colour	Panel Height		Cutout Opening	Net Price
		Inches	Units		
DNCE19CG1	Beige	3.50	2	15×2	\$42.31
DNCE19BK1	Black	3.50	2	15×2	42.31



## STEEL SLOT PANEL

- 14 gauge steel construction.
- Slots are 0.25" x 1.0".
- 1.75" panels have one row of slots, 3.50" have 2 rows.
- Mounting hardware not included, please order separately.
- Finished in beige (CG2) and black (BK2) powder paint.
- Standard 19" rack mount.

Cat. No.	Panel Height		Open Space (cubic inch)	Net Price
	Inches	Units		
<b>GREY/BEIGE—SMOOTH FINISH</b>				
PVSS19001CG2	1.75	1	9.7	\$17.84
PVSS19003CG2	3.50	2	19.4	27.11
<b>BLACK—SMOOTH FINISH</b>				
PVSS19001BK2	1.75	1	9.7	17.84
PVSS19003BK2	3.50	2	19.4	27.11



## ALUMINUM SLOT PANEL

- Constructed from 0.13" aluminum.
- Slots are 0.25" x 1.0".
- 1.75" panels have one row of slots, 3.50" have 2 rows.
- Standard 19" rack mount.
- Finished in beige (CG2) and black (BK2) powder paint.
- Mounting hardware not included, please order separately.

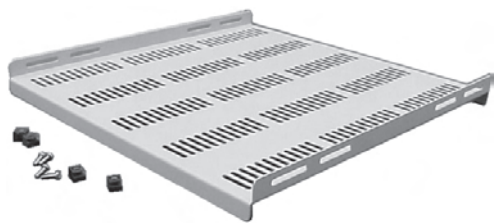
Cat. No.	Panel Height		Open Space (Cubic Inch)	Net Price
	Inches	Units		
<b>GREY/BEIGE—SMOOTH FINISH</b>				
PVSA19001CG2	1.75	1	9.7	\$28.58
PVSA19003CG2	3.50	2	19.4	34.51
<b>BLACK—SMOOTH FINISH</b>				
PVSA19001BK2	1.75	1	9.7	28.58
PVSA19003BK2	3.50	2	19.4	34.51



## FIXED CHASSIS/SHELF

- This shelf can be used as a permanently mounted support shelf or as a pull-out chassis.
- Accepts optional slides for pull-out application.
- Material is 18 gauge (shelf) and 14 gauge (brackets).
- Shelf is 16.8" wide x 0.5" high.
- Finished in white (WH2) powder paint.
- Weight load tested to 85 lbs.

Cat. No.	Panel Width	Shelf Depth	Bracket Depth	Net Price
RASC1912WH2	19	11.9	13.2	\$77.00
RASC1916WH2	19	15.9	14.9	86.49
RASC1922WH2	19	21.9	20.9	98.62

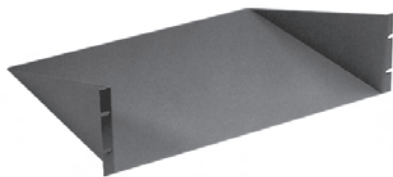


## FIXED SHELF—UNVENTED OR VENTED

- Attach to both pair of 19" rack combination rails.
- The vented version provides a sturdy shelf without obstructing upward heat movement.
- Front & rear lip folded down for extra strength.
- Sides folded up for easy top hardware installation.
- Sides are slotted for easy adjustment with most rail depth locations.
- Rugged textured powder paint finish.
- Heavy duty 14 gauge construction.
- Weight load tested to 350 lbs.

Cat. No.	Colour	Shelf Depth	Net Price
<b>UNVENTED SHELF</b>			
RFUS1918BK1	Black	18"	\$50.17
RFUS1918CG1	Grey/Beige	18"	50.17
RFUS1921BK1	Black	21"	53.18
RFUS1921CG1	Grey/Beige	21"	53.18
RFUS1926BK1	Black	26"	56.96
RFUS1926CG1	Grey/Beige	26"	56.96
RFUS1931BK1	Black	31"	60.95
RFUS1931CG1	Grey/Beige	31"	60.95

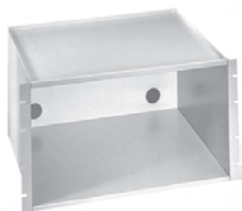
Cat. No.	Colour	Shelf Depth	Net Price
<b>VENTED SHELF</b>			
RFVS1918BK1	Black	18"	50.17
RFVS1918CG1	Grey/Beige	18"	50.17
RFVS1921BK1	Black	21"	53.18
RFVS1921CG1	Grey/Beige	21"	53.18
RFVS1926BK1	Black	26"	56.96
RFVS1926CG1	Grey/Beige	26"	56.96
RFVS1931BK1	Black	31"	60.95
RFVS1931CG1	Grey/Beige	31"	60.95



## RAIL MOUNTED SHELF UNIT

- Formed 14 gauge steel construction.
- Offered in **vented** and **unvented** formats.
- Shelf can mount as internal shelf or external shelf/work space.
- Shelf is 15" deep x 17.25" wide and uses 5/4" panel space.
- Rugged powder paint finish.
- Mounting hardware not included, please order separately.
- Weight load tested to 200 lbs.

Cat. No.	Colour	Paint Finish	Net Price
<b>UNVENTED SHELF</b>			
RASU190515BK1	Black	Textured	\$80.80
RASU190515CG1	Grey/Beige	Textured	80.80
RASU190515GY2	ASA61 Grey	Smooth	80.80
<b>VENTED SHELF</b>			
RASV190515BK1	Black	Textured	91.24
RASV190515CG1	Grey/Beige	Textured	91.24
RASV190515GY2	ASA61 Grey	Textured	91.24

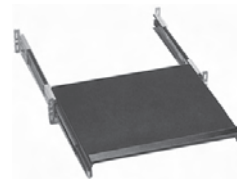


## EQUIPMENT SHELF

- This closed utility shelf has 1.5 diameter cord access holes in each bottom corner.
- Fabricated from 18 gauge steel.
- Inside dimensions are: 17.2" (wide) x 15.0" (deep).
- Height is 1" less than panel space.

- Finished in white (WH2) powder paint.
- Mounting hardware not included, please order separately.
- Weight load tested to 75 lbs.

Cat. No.	Panel Height		Net Price
	Inches	Units	
RASE1900815WH2	8.75	5	\$95.69
RASE1901015WH2	10.50	6	99.00
RASE1901215WH2	12.25	7	111.09



## KEYBOARD DRAWER

- Standard 19" rack mount.
- Supplied complete with slides and mounting hardware.
- Uses only 3.50" of panel space.
- Unique design maximizes available space between rails (17.77").
- Rugged black textured powder paint finish.
- Mounts on 2 pair of mounting rails (front and back).
- Weight load tested to 120 lbs.

Cat. No.	Shelf Depth	Net Price
RAKS19BK1	15"	\$115.44



## UNVENTED AND VENTED SLIDING SHELVES

- Attach to both pair of 19" rack rails.
- The vented version provides a sturdy shelf without obstructing upward heat movement.
- Heavy duty ball bearing slides included.
- Folded on all four sides for extra strength.
- Rugged textured powder paint finish.
- Heavy duty 14 gauge steel.
- Weight load tested to 120 lbs.

Cat. No.	Colour	Shelf Depth	Net Price
<b>UNVENTED SHELF</b>			
RSUS1918BK1	Black	18"	\$139.62
RSUS1918CG1	Grey/Beige	18"	139.62
RSUS1921BK1	Black	21"	148.78
RSUS1921CG1	Grey/Beige	21"	148.78
RSUS1926BK1	Black	26"	155.64
RSUS1926CG1	Grey/Beige	26"	155.64
RSUS1931BK1	Black	31"	250.00
RSUS1931CG1	Grey/Beige	31"	250.00

Cat. No.	Colour	Shelf Depth	Net Price
<b>VENTED SHELF</b>			
RSVS1918BK1	Black	18"	144.20
RSVS1918CG1	Grey/Beige	18"	144.20
RSVS1921BK1	Black	21"	151.07
RSVS1921CG1	Grey/Beige	21"	151.07
RSVS1926BK1	Black	26"	160.22
RSVS1926CG1	Grey/Beige	26"	160.22
RSVS1931BK1	Black	31"	256.36
RSVS1931CG1	Grey/Beige	31"	256.36



Continued on next page....

## STORAGE DRAWER

- Standard 19" rack mount.
- Plastic front pull handle.
- Complete drawer with slides, hardware, lock & two keys.
- Rear support brackets included for all depths or can be supported from rear accessory rail.
- Drawer interior smooth white powder paint.
- Front face finished in tough textured powder paint.
- Drawer shroud is 14 gauge steel.
- Weight load tested to 120 lbs.

Cat. No.	Panel Height		Depth (Inches)	Net Price
	Inches	Units		
<b>GREY/BEIGE TEXTURED FINISH</b>				
RDRW1900312CG1	3.50	2	12	\$217.16
RDRW1900512CG1	5.25	3	12	276.84
RDRW1900712CG1	7.00	4	12	304.00
RDRW1900812CG1	8.75	5	12	336.58
RDRW1901212CG1	12.25	7	12	376.67
RDRW1900316CG1	3.50	2	16	236.13
RDRW1900516CG1	5.25	3	16	293.13
RDRW1900716CG1	7.00	4	16	314.87
RDRW1900816CG1	8.75	5	16	342.00
RDRW1901216CG1	12.25	7	16	464.19
RDRW1900322CG1	3.50	2	22	247.00
RDRW1900522CG1	5.25	3	22	295.87
RDRW1900722CG1	7.00	4	22	317.58
RDRW1900822CG1	8.75	5	22	355.58
RDRW1901222CG1	12.25	7	22	595.00

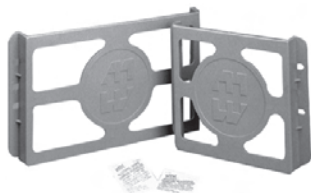
<b>BLACK TEXTURED FINISH</b>				
RDRW1900312BK1	3.50	2	12	217.16
RDRW1900512BK1	5.25	3	12	276.84
RDRW1900712BK1	7.00	4	12	304.00
RDRW1900812BK1	8.75	5	12	336.58
RDRW1901212BK1	12.25	7	12	376.67
RDRW1900316BK1	3.50	2	16	236.13
RDRW1900516BK1	5.25	3	16	293.13
RDRW1900716BK1	7.00	4	16	314.87
RDRW1900816BK1	8.75	5	16	342.00
RDRW1901216BK1	12.25	7	16	380.56
RDRW1900322BK1	3.50	2	22	247.00
RDRW1900522BK1	5.25	3	22	295.87
RDRW1900722BK1	7.00	4	22	317.58
RDRW1900822BK1	8.75	5	22	533.38
RDRW1901222BK1	12.25	7	22	396.67



## GROUND LUGS

- Dual L 16 type lug provides excellent grounding.
- Accepts wire sizes from 1/8-14.
- Mounting hardware not included.
- 1 1/8" wide x 1 1/16" long.

Cat. No.	Net Price
DNGL	\$4.58



## LITERATURE POCKET KIT

- Kit includes pocket, high strength two-sided adhesive tape and surface preparation swab.
- Plastic pocket is black.

Cat. No.	Height	Width	Net Price
PKT66	6	6	\$16.04
PKT99	6	9	16.38



## TOUCH-UP PAINT

- For use in matching standard Hammond colours.
- Provided in 12 oz. spray cans.

Cat. No.	Colour	Net Price
1413BKLS	Black—Low Gloss	\$21.36
1413BKSS	Black	22.71
1413CGRALS	Contempra Grey RAL7032	22.71
1413GFS	Gulf Blue	22.71
1413LRS	ASA 61 Grey—Recoatable	22.71
1413NS	White	22.71



OPTIONAL MAGNET MOUNT KIT FOR 18" LIGHT



REMOTE DOOR SWITCH

## LIGHT KIT

- Designed to fit inside cabinets for 19" mounting.
- Features a manually operated switch, 115V convenience outlet, durable plastic lens, and 6 foot power cord (without plug).
- Finished in white (WH2).
- UL and CSA component recognized.
- Installs with 1/4-20 bolts placed through holes drilled in top of cabinet. Screws and sealing washers provided or use magnetic mounting kit.
- Use standard 18" T12 lamps (not included).
- 1-3/4" high x 4-1/2" deep.
- Mounting hardware included.

### OPTIONAL MAGNET MOUNT KIT:

- Allows for solid mounting without drilling and the ability to move light within cabinet easily.
- For use with mild steel enclosures only.
- Mounting hardware included.

### OPTIONAL REMOTE DOOR SWITCH:

- Permits convenient door activated on-off function. Mounts to flange of any Hammond enclosure.
- Mounting hardware included.

Cat. No.	Description	Net Price
FLK18 <sup>1</sup>	18" Fluorescent Light Kit	\$162.98
FLK18MM	Magnet Mount Kit for 18" Light	56.60
FLKDS	Remote Door Switch	28.29

<sup>1</sup>Fluorescent light tube (T12) not included.



## EQUIPMENT SLIDES

- Sold in pairs.
- Mounts on combination rail front flange (not included) (front and back).
- Heavy duty double rail ball bearing type.
- Slide travel equals length plus 1".

Cat. No.	A Length	Capacity (Pair)	Net Price
RSLIDE12	12	120	\$72.44
RSLIDE16	16	130	75.51
RSLIDE22	22	120	80.09





## SIDE SUPPORT ANGLES

- Angles mount on accessory portion of rails with either leg used as support depending on requirements.
- Slots allow up/down or front/back adjustments.
- Made of 14 gauge steel, with dimensions of 1.75" x 1.75".
- Finished in black (BK3) powder paint.
- Mounting hardware not included, please order separately.

Cat. No.	Length (Inches)	Net Price
RASA12BK3	9.97	\$28.93
RASA16BK3	14.95	31.56
RASA22BK3	20.95	35.60
RASA28BK3	28.00	38.91



## REAR SUPPORT BAR

- Heavy duty 14 gauge steel support fastens between accessory portion of rails for support across rear of equipment.
- Uses 1.75" of panel space.
- Finished in black (BK1) powder paint.
- Mounting hardware not included. Please order separately.
- Folded top edge for extra deep edge and extra strength.
- Includes slots for easy installation of cable ties, or velcro belts for cable organizing.

Cat. No.	Length (Inches)	Net Price
RASB19BK1	19	\$33.11



10-32 x 0.625" slotted oval head nickel plated screws with steel cup washers (.60" outside diameter).

Cat. No.	Description	Net Price
1421	Pkg. of 4 screws & 4 washers	\$3.31



10-32 x 0.625" slotted and Phillips oval head combination nickel plated screws with black plastic cup washers (.58" outside diameter).

Cat. No.	Description	Net Price
1421A	Pkg. of 4 screws & 4 washers	\$3.47



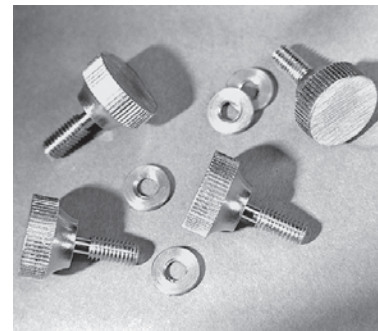
Nickel-plated 10-32 x 0.625" countersunk, slotted and Phillips combination oval head screws.

Cat. No.	Description	Net Price
1421A25B	Pkg. of 25	\$5.40
1421A100B	Pkg. of 100	20.09



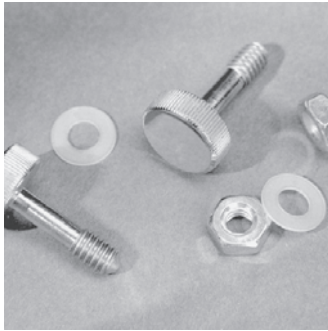
Black plastic cup washers for countersunk 10-32 screws (.58" outside diameter).

Cat. No.	Description	Net Price
1421A25W	Pkg. of 25	\$9.47
1421A100W	Pkg. of 100	36.53



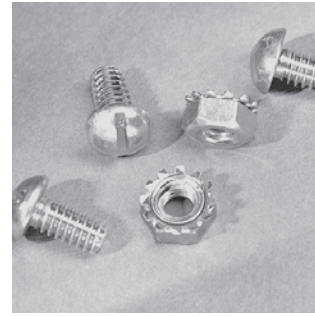
Nickel plated 10-32 x 0.5" thumb screws with threaded nylon washers for capturing panels up to 0.09" thick. Head is 0.62" diameter x 0.37 high.

Cat. No.	Description	Net Price
1421B	Pkg. of 4 screws & 4 washers	\$11.89



Polished stainless steel 1/4-20 x 0.87" thumb screws with nylon washers and steel nuts for captivating panels up to 0.4" thick. Head is 0.68" diameter x 0.25" high.

Cat. No.	Description	Net Price
1421B2	Pkg. of 2 screws, nuts & washers	\$15.98



Zinc plated 1/4-20 x 0.5" slotted round head screws with captive star washer nuts. Supplied with all panel rails and racks.

Cat. No.	Description	Net Price
1421K25	Pkg. of 25 screws & nuts	\$7.17
1421K100	Pkg. of 100 screws & nuts	27.40



Zinc plated 10-32 x 0.5" slotted and Phillips combination pan head screws.

Cat. No.	Description	Net Price
1421D	Pkg. of 25	\$4.22



10-32 clip nuts for round hole punched panel rails. Has the holding strength of a standard 10-32 nut. Black finish.

Cat. No.	Description	Net Price
1421N25	Pkg. of 25	\$15.91
1421N100	Pkg. of 100	62.11



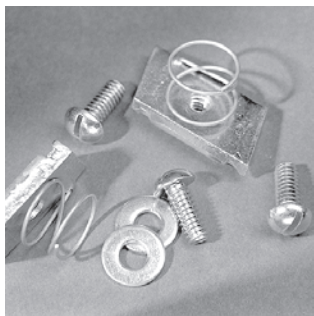
Nickel plated metal cup washers for countersunk 10-32 screws (.60" outside diameter).

Cat. No.	Description	Net Price
1421E25W	Pkg. of 25	\$3.80
1421E100W	Pkg. of 100	14.82



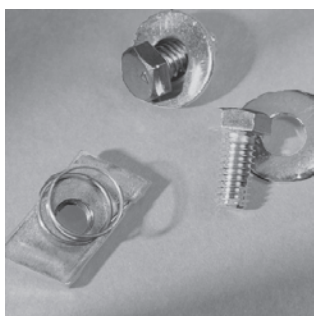
Zinc plated 10-32 clip nuts. For round hole punched panel rails. Has the holding strength of a standard 10-32 nut.

Cat. No.	Description	Net Price
1421NP25	Pkg. of 25	\$17.51
1421NP100	Pkg. of 100	68.27



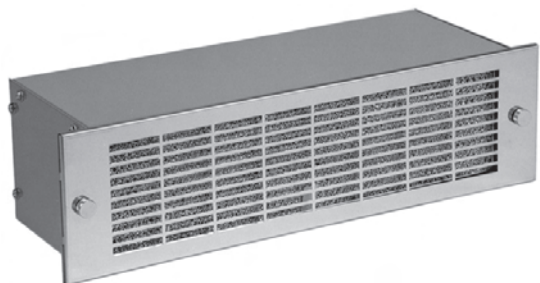
1/4-20 spring loaded nuts and 0.62" round head slotted bolts and washers for "C" channels.

Cat. No.	Description	Net Price
1421S	Pkg. of 4	\$14.82



3/8 x 16 spring loaded nuts and 0.75" hex head bolts and washers for "C" channels (used in racks with Amhal strut rail mounting).

Cat. No.	Description	Net Price
1463S	Pkg. of 3	\$22.80



## RACK INTAKE BLOWERS

- Standard 19" rack mount.
- Each unit contains a quadruplex centrifugal blower, powered by a single precision ball-bearing motor.
- Air delivery from more than 50% of their 17" width.
- Internal neoprene isolation mounts reduce transmission of vibration to the rack.
- Air intake only, to pressurize the rack with filtered air.
- Heavy steel construction.
- Attractive 19" stainless steel grill included.
- 115 VAC, 50/60 Hz, motor is UR/CSA listed, ball bearing type, cooled by incoming air.
- Includes permanent filter.
- Comes with 6' STJW 3-wire cord.

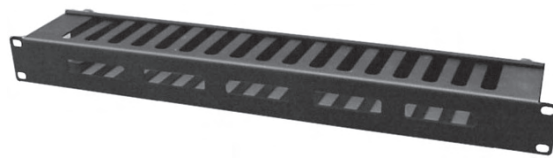
Cat. No.	Free Flow Air Delivery (CFM)	Ambient Temp (F)	Panel Height		Net Price
			Inches	Units	
KP350A	150	-20 to +250	3.50	2	\$574.16
KP529A	300	-20 to +250	5.25	3	600.65
KP729A	470	-20 to +250	7.00	4	870.09



## CABLE ORGANIZING RING PANELS

- Five steel rings welded to a folded (for extra strength) 19" rack panel.
- Rings extend 3.5" from panel front.
- Rugged textured black powder paint finish.
- Mounting hardware not included, please order separately.

Cat. No.	Panel Height		Net Price
	Inches	Units	
PCMBS19001BK1	1.75	1	\$43.49
PCMBS19003BK1	3.50	2	48.07



FRONT VIEW

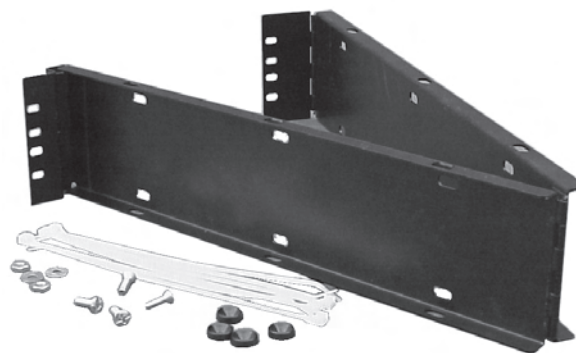


REAR VIEW

## CABLE ORGANIZING METAL FINGER PANELS

- 19" rack mount.
- Snap open, hinged rear door.
- Rack mount side has five slotted openings.
- Extends 3" (not including snap buttons) into rack depth.
- Rugged textured black powder paint finish.
- Mounting hardware not included, please order separately.

Cat. No.	Panel Height		Net Price
	Inches	Units	
PCMDS19001BK1	1.75	1	\$83.56
PCMDS19003BK1	3.50	2	96.71
PCMDS19005BK1	5.25	3	162.51



## HINGED CABLE GUIDE

- Mounts to standard 19" rack rails.
- Steel construction.
- Includes mounting hardware & tie wraps.
- Rugged textured black powder paint finish.

Cat. No.	Panel Height		Net Price
	Inches	Units	
CGUIDE	3.50	2	\$91.76





### SINGLE CABLE RING

- Mounts to standard 19" rack rails.
- Steel construction.
- 3.5" long x 1.25" wide.
- Rugged textured black powder paint finish.
- Mounting hardware not included, please order separately.

Cat. No.	Panel Height		Units	Net Price
	Inches			
CMRBK1	1.75		1	\$7.21
CMR3BK1	3.50		2	9.61



### RACK MOUNT/TABLE TOP INSTRUMENT

- Easy assembly.
- Strong construction using .125" thick side panels and 0.62" thick top and bottom panels.
- Light weight design—all aluminum.
- Can be used with or without rack mounting brackets (included).
- Front & rear panel are interchangeable (one is off white and the other smooth black).
- Enclosure is finished in textured black powder paint.
- Includes top, bottom, side panels, feet, rack mount brackets and all hardware.
- Easy access to inside, as only 4 screws need to be removed from any panel.
- Aluminum chassis panel is optional.

Cat. No.	Panel Height		Width (In.)	Depth (In.)	Inside Clearance with Chassis Installed (In.)	Net Price
	Inches	Units				

#### SOLID TOP AND BOTTOM

RMCS19018BK1	1.75	1	17	8	0.81	\$77.82
RMCS190113BK1	1.75	1	17	13	0.81	91.56
RMCS19038BK1	3.50	2	17	8	2.56	86.98
RMCS190313BK1	3.50	2	17	13	2.56	109.87
RMCS190513BK1	5.25	3	17	13	4.31	125.89
RMCS190713BK1	7.00	4	17	13	6.06	144.20
RMCS190813BK1	8.75	5	17	13	7.81	173.96
RMCS191013BK1	10.50	6	17	13	9.56	192.27
RMCS191015BK1	10.50	6	17	15	9.56	189.98

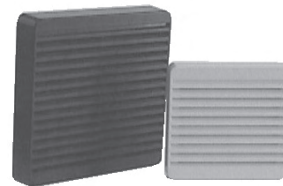
#### VENTILATED TOP AND BOTTOM

RMCV19018BK1	1.75	1	17	8	0.81	85.60
RMCV190113BK1	1.75	1	17	13	0.81	100.71
RMCV19038BK1	3.50	2	17	8	2.56	95.67
RMCV190313BK1	3.50	2	17	13	2.56	120.84
RMCV190513BK1	5.25	3	17	13	4.31	138.49
RMCV190713BK1	7.00	4	17	13	6.06	158.62
RMCV190813BK1	8.75	5	17	13	7.81	191.36
RMCV191013BK1	10.50	6	17	13	9.56	211.49
RMCV191015BK1	10.50	6	17	15	9.56	208.98

#### CHASSIS PANEL

Cat. No.	Width	Use with Enclosure Depth (In.)	Net Price
RMP908	8.5	8	\$18.20
RMP1908	17	8	27.24
RMP1913	17	13	31.58
RMP1915	17	15	34.67

## ENVIRONMENT CONTROL



### ECONOMY PLASTIC FILTER FAN GRILLS

- Create your own filter fans or exhaust grill.
- Mounts easily with 4 screws using template and hardware provided.
- Complete with flame retardant ABS plastic grill & flame retardant synthetic filter.
- Can be used with standard 3.15" (80mm) or 4.7" (120 mm) square fans.

Cat. No.	Grill Size		Use with Square Fan Size	Colour	Net Price
	H	W			
XPFA80BK	4.13"	4.13"	3.15"	Black	\$8.07
XPFA80CG	4.13"	4.13"	3.15"	Grey/Beige	8.07
XPFA80GY	4.13"	4.13"	3.15"	ASA 61 Grey	8.07
XPFA120BK	5.91"	5.91"	4.70"	Black	12.29
XPFA120CG	5.91"	5.91"	4.70"	Grey/Beige	12.29
XPFA120GY	5.91"	5.91"	4.70"	ASA 61 Grey	12.29

### REPLACEMENT FILTERS FOR ABOVE (5 PER PACK)

Cat. No.	Use with Square Fan Size	Net Price
PFF1000	3.15" (XPFA80 series)	\$8.70
PFF2000	4.70" (XPFA120 series)	9.93



Most electronic control systems generate a substantial amount of heat during operation. This heat factor is intensified as electronic controls are made more compact, perform more functions, and are placed in confined areas.

Additional problems are encountered when the electronic process control system is located on-line in an industrial setting, rather than in a clean computer room. The factory environment can be hostile to the point that performance and effective life of the electronic components are materially reduced, or the control system fails completely. Ambient temperature might be excessively high, as that found in a steel mill. Moisture-laden air and airborne particulate matter might be present to adversely affect the electronic components, as in the paper manufacturing industry.

Air conditioners are designed to perform reliably under many of these harsh conditions and to provide the cooling and environmental protection required by sensitive electronic production control systems.

Cat. No.	Rating	Rated Voltage	Hz	Height	Width	Depth	Net Price
DTS1200A115	1200BTU/H	115	60	13.00	14.76	7.48	\$2404.53
DTS2000A115	2000BTU/H	115	60	17.52	12.40	10.04	2506.38
DTS3500A115	3500BTU/H	115	60	36.00	15.35	7.87	3163.18
DTS6000A115	6000BTU/H	115	60	53.15	15.35	7.87	3839.02
DTS8000A115	8000BTU/H	115	60	53.15	15.63	10.63	4225.22
DTS12000A115	12000BTU/H	115	60	53.15	15.63	10.63	5445.85

A115 units can be operated 50 Hz at 110 V



## Schroff®

### The Total Packaging Solution

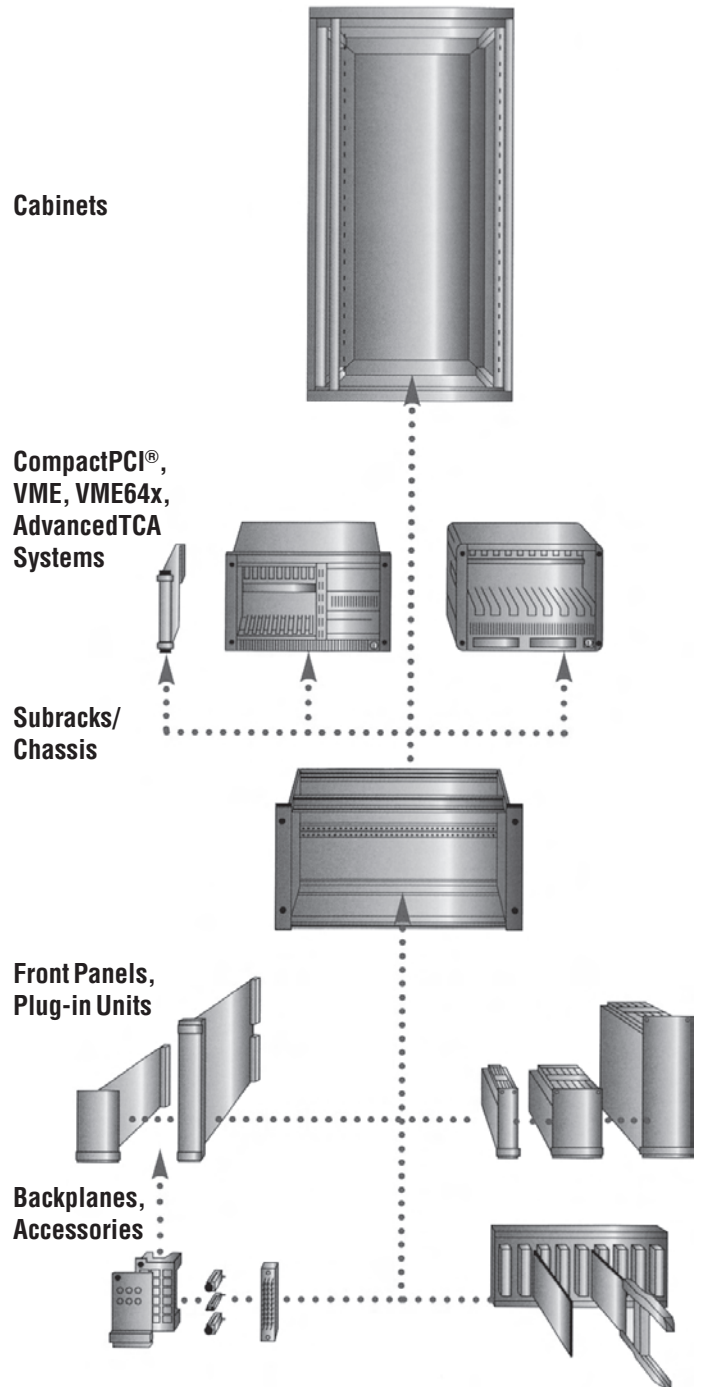
Schroff® is synonymous with the finest electronic packaging products. From 19" equipment cabinets and subracks to complete enclosure integration, Schroff products offer the highest level of quality and aesthetics in the market today. Recognized across the globe, Schroff's enclosure systems meet all national and international standards for electronic packaging. In fact, the original company pioneered the development of standardized packaging based on 19" equipment.

Today, Pentair Electronic Packaging markets the Schroff brand of enclosure products in the Americas while complimenting the Schroff product line with its own custom enclosure capabilities.

Pentair Electronic Packaging, a subsidiary of Pentair, Inc., is a world leading provider of standard and custom electronic enclosure solutions.

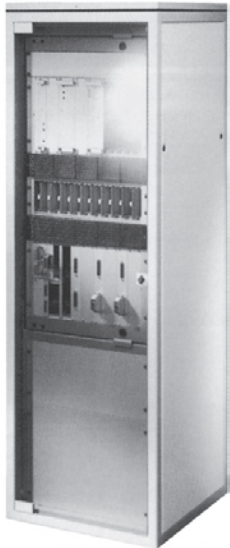
The Pentair Enclosure Group's enclosure product brands are market specific:

**Electronics, Medical, Security  
and Telecommunications:**



## Cabinets

■ We offer a complete line of cabinets to suit every application and market requirement, from the compact Minirack to the seismic Zone 4, heavy-duty Tecnorack cabinets to outdoor plant enclosures. Each cabinet family is fully featured and accessorized, and delivers an aesthetic presentation that will enhance any original equipment manufacturer's end product.



### *eurorack*

- General purpose 19" cabinet, can be used for most electronic applications
- Modular construction
- Stylish design and presentation
- Service plus: assemble-to-order



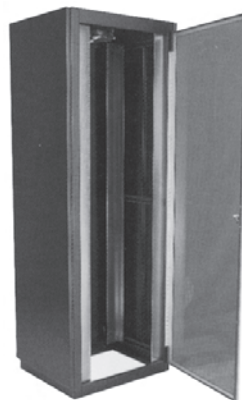
### *tecnorack*

- Ideal for Security, Defense, and Telecommunications applications
- Telecordia-Core-GR63
- Seismic Zone 4 and EMC



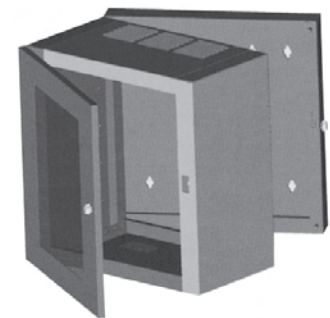
### *minirack*

- Ideal for broadcast or security markets, or any application that requires a compact 19" cabinet
- Modular construction
- Stylish design and presentation
- Service plus: assemble-to-order



### **20,000 Series**

- Ideal for Security and defense applications
- Welded, cold rolled steel construction
- Parametrically designed to be modified in all three axes
- EMC through Tempest specifications



### **Custom**

- Build-to-print or custom design
- Indoor or outdoor
- Pro-Engineer CAD