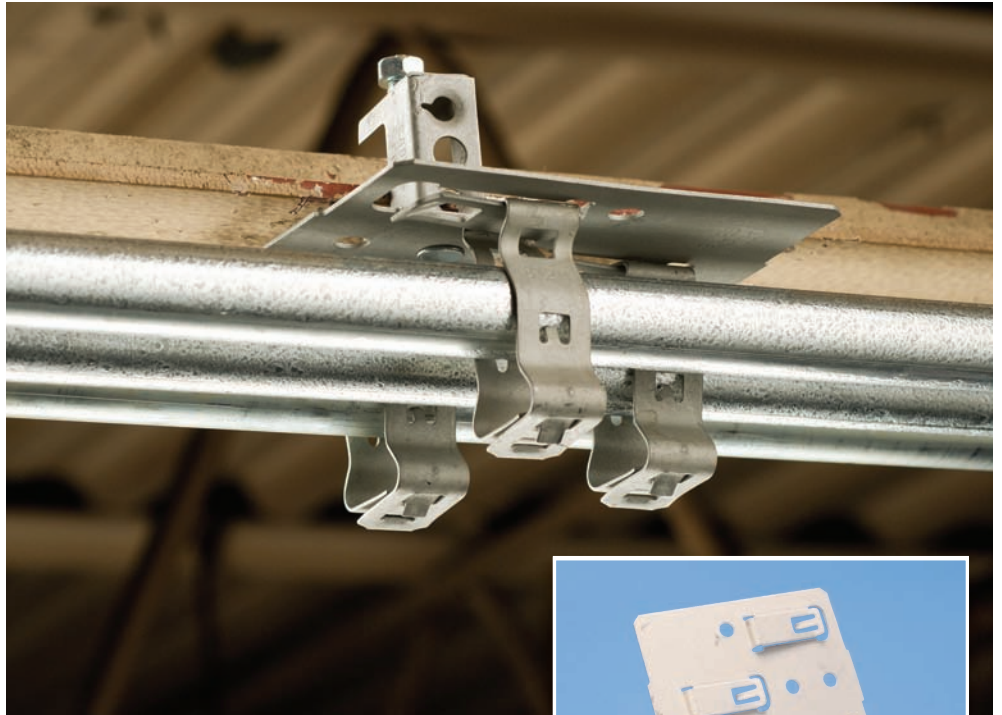


SBT18 Multiple Conduit Mounting Plate

Features

- Affixes up to three conduit clips with an easy snap-in attachment
- Installs without tools
- Aligns with standard 1-1/2" deep electrical box knockouts and mounting holes
- Eliminates conduit bend for 1/2" and 3/4" sizes
- Comes in a variety of riveted assemblies
- Installs horizontally or vertically
- Attaches to footed box supports for applications below raised floors



The SBT18 Multiple Conduit Mounting Plate enables contractors to install up to three runs of conduit on a variety of surfaces including beams, purlins, metal and wood studs, and plain and threaded rods. Traditionally, contractors use a time-consuming method to run conduit that involves cutting lengths of strut, clamping those lengths to the mounting surface and using strut clamps to attach the conduit. The SBT18 provides for quick and easy snap-in attachment of up to three conduit clips and requires no tools for installation.

The SBT18 is available in a variety of pre-riveted assemblies including hammer-on, beam clamp and multi-function clip. When used with a footed box support, the SBT18 facilitates conduit runs below raised floors.

The versatile mounting plate installs horizontally or vertically. It aligns with standard 1-1/2" deep electrical box knockouts and mounting holes. Because of this, the SBT18 eliminates conduit bends for 1/2" and 3/4" sizes.



SBT18 Multiple Conduit Mounting Plate

Cost Comparison: SBT18 vs. Traditional Conduit Installation

The following example demonstrates the significant savings of both material and labor associated with the SBT18. This example compares the costs of installing three 10-ft. lengths of conduit to the underside of a beam, attached at both ends.

Traditional Method (Using Strut)

Tools Needed: Wrench and Screwdriver

Material: (Costs come from ERICO price sheets)

Material Description	Qty	Cost each	Cost Total
1 Foot Section of Strut	2	\$1.13/foot	\$2.26
Window Brackets	4	\$4.78	\$19.12
Conduit Clamps	6	\$.73	\$4.38
Total Material			\$25.76

Labor: (Costs come from 2005 RS Means book for Cleveland)

Operation	Time Required	Labor Rate	Cost
Cut Strut Sections	2 min, 25 sec	\$44/hr.	\$1.77
Attach Strut to Beam	4 min, 15 sec	\$44/hr.	\$3.12
Attach Clamps to Strut	2 min, 49 sec	\$88/hr.	\$4.13
Total Labor	9 min, 29 sec		\$9.02

Total Installed Cost = \$25.76 + \$9.02 = \$34.78

SBT18 Method

Tools Needed: Hammer

Material: (Costs come from ERICO price sheets)

Material	Description	Qty	Cost Each	Cost Total
SBT1824	Hammer-On Multiple Conduit Mounting Plate	2	\$1.45	\$2.90
812M	Conduit Clip	6	\$.24	\$1.44
Total Material				\$4.34

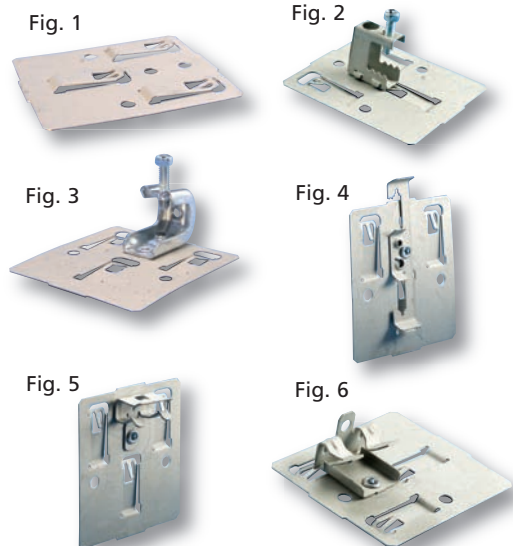
Labor: (Costs come from 2005 RS Means book for Cleveland)

Operation	Time Required	Labor Rate	Cost
Attach 812M's to SBT1824	32 sec	\$44/hr.	\$0.39
Attach SBT1824 to Beam	21 sec	\$44/hr.	\$0.26
Attach Conduits to 812	32 sec	\$88/hr.	\$0.78
Total Labor	1 min, 25 sec		\$1.43

Total Installed Cost = \$4.34 + \$1.43 = \$5.77

Total Savings = \$34.78 - \$5.77 = \$29.01 = > 80%

Part No.	Fig. No.	Description	Qty./Box
SBT18	1	Multi-Run, Conduit Hanger Plate	50
SBT1824SM	5	Hammer-on, side mount, 1/8" – 1/4" flange	50
SBT1858SM	5	Hammer-in, side mount, 5/16" – 1/2" flange	50
SBT18912SM	5	Hammer-on side mount, 9/16" – 3/4" flange	50
SBT1824	6	Hammer-on, underside, 1/8" – 1/4" flange	50
SBT1858	6	Hammer-on, underside, 5/16" – 1/2" flange	50
SBT18912	6	Hammer-on, underside, 9/16" – 3/4" flange	50
SBT184Z34	4	Multi-function clip, #12 wire through 1/4" plain rod	50
SBT186Z34	4	Multi-function clip, 3/8" plain or threaded rod	50
SBT18BC	2	Beam clamp through 1/2" flange	50
SBT18BC200	3	Beam clamp, 1/8" to 5/8" flanges	50
S3575BP50		1/4-20 x 3/8" round head screw	50



WARNING
ERICO products shall be installed and used only as indicated in ERICO's product instruction sheets and training materials. Instruction sheets are available at www.erico.com and from your ERICO customer service representative. Improper installation, misuse, misapplication or other failure to completely follow ERICO's instructions and warnings may cause product malfunction, property damage, serious bodily injury and death.

Copyright ©2009, 2010 ERICO International Corporation. All rights reserved.
CADDY, CADWELD, CRITEC, ERICO, ERIFLEX, ERITECH, and LENTON are registered trademarks of ERICO International Corporation.