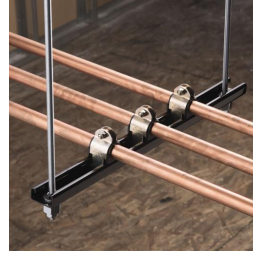
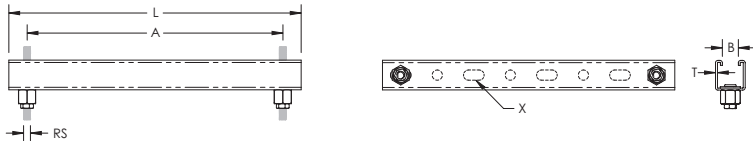


# CADDY ROD LOCK Strut – CRLP137L22



- Allows for the quick creation, installation, and adjustment of multi-level trapeze assemblies
- Ready to use out of the box and eliminates the need for cutting and preparing sections of strut
- Easy "push-to-install" design allows installers to simply push the threaded rod through the mounting hole, instantly holding it in position
- Integrated adjustment nut enables fine tuning the system height up or down
- Accommodates slight variances in rod-to-rod position of the trapeze
- No loose parts or special tools needed for installation
- Lock nut can be finger tightened, locking the rod in place
- Works with all accessories that fit standard A or C type strut channels



Part Number	CRLP137L22
Material	Steel
Finish	Electrogalvanized Pregalvanized
Rod Size (RS)	3/8"
Strut Type	C [13/16" x 1 5/8"]
Length (L)	24"
Thickness (T)	14 GA
A	22"
B	7/8"
X	9/16" x 1 1/8"
Standard Packaging Quantity	5 pc
UPC	78285684510

CADDY ROD LOCK Strut must be installed with the open side of the channel facing up.  
For indoor applications only.

## WARNING

Pentair products shall be installed and used only as indicated in Pentair's product instruction sheets and training materials. Instruction sheets are available at [erico.pentair.com](http://erico.pentair.com) and from your Pentair customer service representative. Improper installation, misuse, misapplication or other failure to completely follow Pentair's instructions and warnings may cause product malfunction, property damage, serious bodily injury and death and/or void your warranty.

© 2017 Pentair All rights reserved  
Pentair, CADDY, CADWELD, CRITEC, ERICO, ERIFLEX, ERITECH and LENTON are owned by Pentair or its global affiliates.  
All other trademarks are the property of their respective owners. Pentair reserves the right to change specifications without prior notice.

