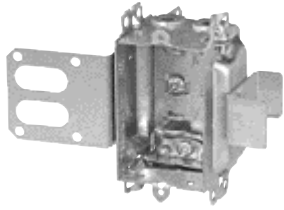
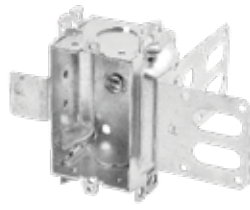


Steel stud boxes

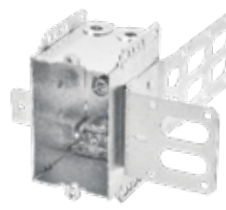
Device boxes



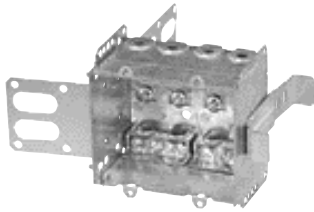
CI3102-LSSAX



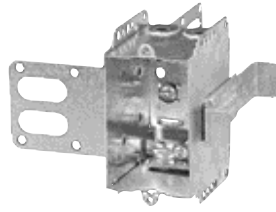
CI3102-SSX



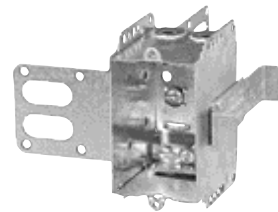
CI2104-LSSAX



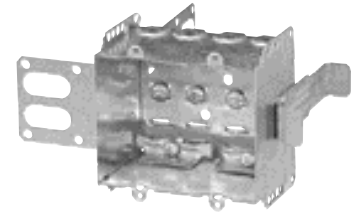
CI2104-LSSA-2X



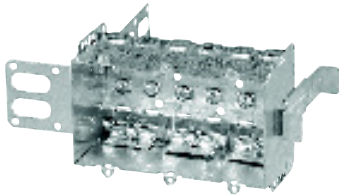
CI2104-LSSX



CI2104-LSS1X-1



CI2104-LSS2X-1



CI2104-LSS3X-1



CI-2104-LSS-2X



CI-2104-LSS-3X



CISSX-6



Cat. No.	Volume (Cu. in.)	Width (in.)	Features Clamps	Knockouts			Pryouts ends
				1/2 in. ends	1/2 in. bottom	3/4 in. ends	
Device boxes – 2 in. deep – gangable – 3 in. high							
CI3102-LSSAX	12.0	2	BX/Loomex	–	–	–	4
CI3102-SSX	12.0	2	–	2	–	–	–
Device boxes – 2 1/2 in. deep – pre-ganged – 3 in. high							
CI2104-LSSAX	12.5	2	BX/Loomex	–	–	–	4
CI2104-LSSA-2X	25.0	3 3/4	BX/Loomex	–	–	–	8
CI2104-LSSA-3X	37.5	5 1/2	BX/Loomex	–	–	–	12
CI2104-LSSA-4X	50.0	7 3/8	BX/Loomex	–	–	–	16
CI2104-LSSX	12.5	2	Loomex/BX	–	–	–	4
CI2104-LSS1X-1	12.5	2	Loomex/BX	–	–	–	4
CI2104-LSS2X-1	25.0	3 3/4	Loomex/BX	–	–	–	8
CI2104-LSS3X-1	37.5	5 1/2	Loomex/BX	–	–	–	12
CI-2104-LSS-2X	25.0	3 3/4	Loomex/BX	–	–	–	8
CI-2104-LSS-3X	37.5	5 1/2	Loomex/BX	–	–	–	12
CI2104-LSS-4X	50.0	7 3/8	Loomex/BX	–	–	–	16

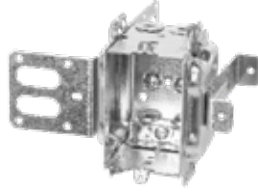
Cat. No.	Description
Support brackets	
CISSX-6	Support bracket extension for 6 in. metal stud

Steel stud boxes

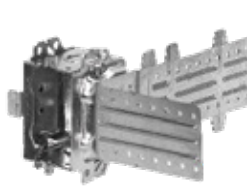
Device boxes



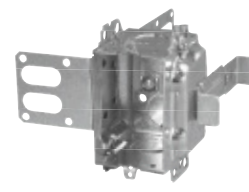
CI3104-KSSX



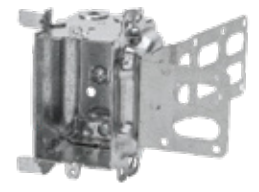
CI3104-KSSX-5/8



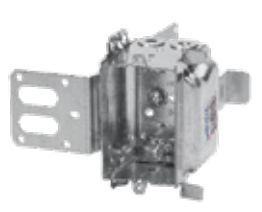
CI3104-KSSX-NG*



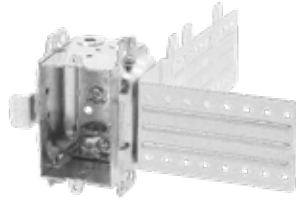
BC3104-KSS1X-1



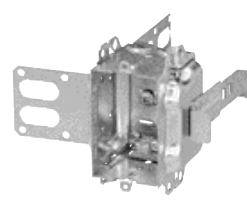
BC3104-LSSAX



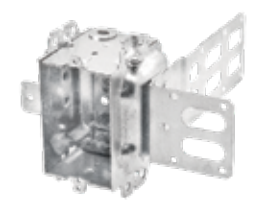
BC3104-LSSX



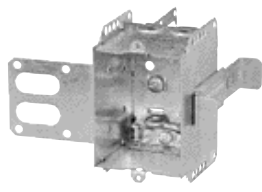
BC3104-LSSAX-NG*



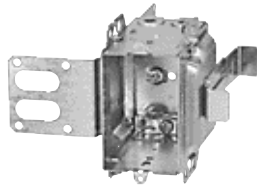
CI3104-LSS1X-1



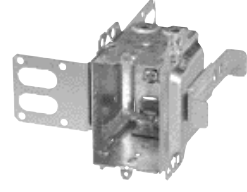
CI3104-LSSA1X-1



CI1504-LSSAX



CI3004-LSSAX-1



CI3004-LSSX-1



CISSX-6

* Heavy-duty adjustable bracket that provides solid support even up to 3-1/2 in. away from steel studs.



Cat. No.	Volume (Cu. in.)	Features Clamps	Knockouts			Pryouts ends
			1/2 in. ends	1/2 in. bottom	3/4 in. ends	
Device boxes – 2 1/2 in. deep – gangable – 3 in. x 2 in.						
CI3104-KSSX	16.0	–	2	2	2	–
CI3104-KSSX-5/8	16.0	–	2	2	2	–
CI3104-KSSX-NG*	16.0	–	2	2	2	–
BC3104-KSS1X-1	16.0	–	2	2	2	–
BC3104-LSSAX	16.0	BX/Loomex	–	–	–	4
BC3104-LSSAX-NG*	16.0	BX/Loomex	–	–	–	4
BC3104-LSSX	16.0	Loomex/BX	–	–	–	4
CI3104-LSS1X-1	16.0	Loomex/BX	–	–	–	4
CI3104-LSSA1X-1	16.0	BX/Loomex	–	–	–	4
CI3104-SSX	16.0	Loomex/BX	2	2	–	–
Device boxes – 2 1/2 in. deep – non-gangable – 3 in. x 2 1/4 in.						
CI1504-LSSAX	15.0	Loomex/BX	–	–	–	4
Device boxes – 3 in. deep – gangable – 3 in. x 2 in.						
CI3004-LSSAX-1	18.0	BX/Loomex	–	–	–	4
CI3004-LSSX	18.0	Loomex/BX	–	–	–	4
CI3004-LSSX-1	18.0	Loomex/BX	–	–	–	4

* Heavy-duty adjustable bracket that provides solid support even up to 3 1/2 in. away from steel studs and supplied with raised ground screws.

Cat. No.	Description
Support brackets	
CISSX-6	Support bracket extension for 6 in. metal stud

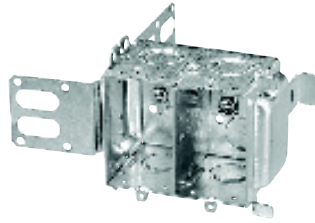
Steel stud boxes

347 V Boxes and power communication boxes

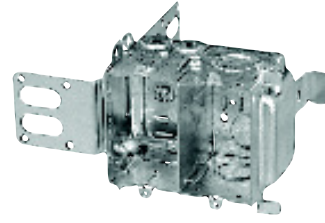
**BAD QUALITY PICTURE
TO SMALL
MAX 3 X 3 CM...**



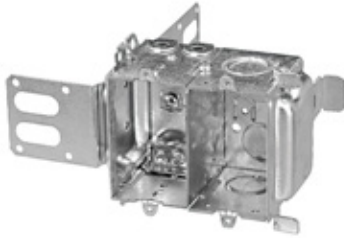
CI1204-LSSAX-HV



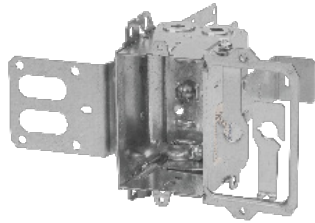
CI4204-KSSX



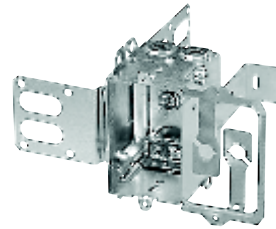
CI4204-LSSX



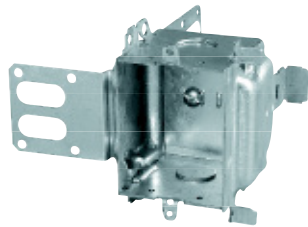
CI4204-LSSAX



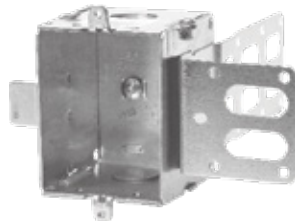
CI4304-LSSX



CI4304-LSSAX



CI1204-SSX-HV



CI1204-SS1X-HV



CISSX-6



Cat. No.	Volume (Cu. in.)	Features Clamps	Knockouts			Pryouts ends
			1/2 in. ends	1/2 in. bottom	3/4 in. ends	
347 V boxes – 2 1/2 in. deep – gangable – 3 in. x 2 1/4 in						
CI1204-SSX-HV	19.5	–	2	–	–	–
CI1204-LSSAX-HV	19.5	BX/Loomex	–	–	–	4
CI1204-SS1X-HV	16.0	–	2	–	–	–
Power / Communication boxes – 2 1/2 in. deep – pre-ganged – 3 in. x 2 in. / gang						
CI4204-KSSX	12.5 / gang	–	4	4	4	–
CI4204-LSSX	12.5 / gang	Loomex/BX	2	2	2	4
CI4204-LSSAX	12.5 / gang	BX/Loomex	2	2	2	4
CI4204-LSSAX-1	12.5 / gang	BX/Loomex	2	2	2	4
CI4304-LSSX	12.5 / gang	Loomex/BX	–	–	–	4
CI4304-LSSAX	12.5 / gang	BX/Loomex	–	–	–	4

Cat. No.	Description
Support brackets	
CISSX-6	Support bracket extension for 6 in. metal stud

Steel stud boxes

4 in. and 4-11/16 in. square boxes and 4 in. octagonal boxes



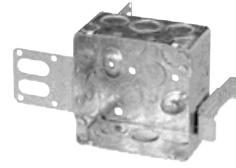
BC52151-KSSX



BC52151-KSSX-NG*



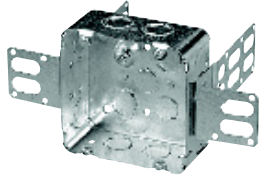
BC52171-KSSX



CI52171-KSSX-1



CI52171-1-SSX-1



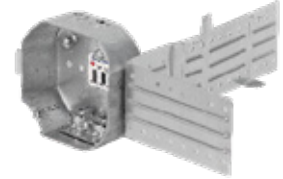
CI72171-KSSX



CI54151-KSSX



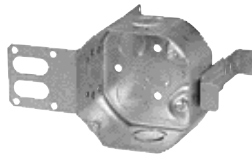
BC54151-LSSAX



BC54151-LSSAX-NG*



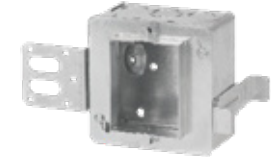
BC1110-SSX



CI54171-KSSX



CI54171-KSSX-5/8



BC52171-KSSXHVKIT

* Heavy-duty adjustable bracket that provides solid support even up to 3-1/2 in. away from steel studs.



Cat. No.	Volume (Cu. in.)	Clamps	Knockouts				Pryouts sides
			1/2 in. sides	1/2 in. bottom	3/4 in. sides	3/4 in. bottom	
4 in. square boxes – 1 1/2 in. deep							
BC52151-KSSX	21.0	–	7	4	3	2	–
BC52151-KSSX-NG*	21.0	–	7	4	3	2	–
4 in. square boxes – 2 1/8 in. deep							
BC52171-KSSX	30.0	–	7	4	3	2	–
BC52171-KSSX-NG*	30.0	–	7	4	3	2	–
CI52171-KSSX-1	30.0	–	7	4	3	2	–
CI52171-1-SSX-1	30.0	–	–	4	–	2	2
4 11/16 in. square boxes – 2 1/8 in. deep							
CI72171-KSSX	42.0	–	8	4	4	2	–
4 in. octagonal boxes – 1 1/2 in. deep							
CI54151-KSSX	15.0	–	2	1	2	2	–
BC54151-LSSAX	15.0	BX/Loomex	–	1	–	–	4
BC54151-LSSAX-NG*	15.0	BX/Loomex	–	1	–	–	4
4 in. octagonal boxes – 2 1/8 in. deep							
CI54171-KSSX	21.0	–	2	4	2	2	–
CI54171-KSSX-5/8	21.0	–	2	4	2	2	–
4 in. square – 2 1/8 in. deep							
BC52171-KSSXHVKIT	33.6	–	6	–	2	–	–

* Heavy-duty adjustable bracket that provides solid support even up to 3 1/2 in. away from steel studs and supplied with raised ground screws.

Cat. No.	Volume (Cu. in.)	Features			Knockouts 1/2 in. sides
		Brackets	Raised Ground Screw	1/2 in. ends	
4 in. square boxes – 1 1/2 in. deep					
BC1110-SSX	16.5	“SSX”	yes	7	4