

METER SOCKET ACCESSORIES

Stainless Steel Meter Rings



MSR-C	Stainless steel meter ring, tamper-proof
MSRP-C	Stainless steel meter ring, tamper-proof for padlock

Stainless Steel Ring



SM002A	Screw on type, tamper resistant
---------------	---------------------------------

Acrylic Sealing Ring



S102WD	"PEERLESS SECURITY" ring, available with any meter socket.
Note: When ordering any meter socket, add suffix "Z" to meter socket cat. number to exchange standard stainless steel ring for S102WD model.	

Meter Protectors



- Meter protector for use in problem areas (trailer parks, playgrounds, conservation areas)
- Steel construction (16 ga. galv. steel)
- Clear, unbreakable polycarbonate front cover, which allows full view of meter revenue reading and serial number
- Sealing and padlocking provision
- Grey painted

MP01	7-1/6" dia. x 4-3/4" deep for use with single phase residential meters
MP02	7-1/6" dia. x 8-3/4" deep for use with all meters, other than single phase residential meters

METER SOCKET ACCESSORIES

Blank Meter Cover Plates



BS087	Grey ABS
BS089	Plastic "throw-away" cover
BS090	Clear unbreakable polycarbonate

Jumper Bar



CM-BS100	200 Amp. max.
-----------------	---------------

Meter Jaw Safety Shroud



LS500*	Red polycarbonate, 100/200 AMP
---------------	--------------------------------

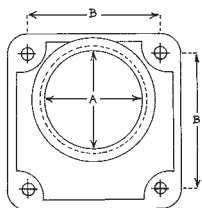
* CSA not applicable

Mast Coupler



MH200	Fits all sockets with regular 2-1/2" hub opening
--------------	--

Threaded Interchangeable Hubs



CATALOGUE NUMBER	P.V.C. CAT. NO.	A HUB SIZE (in.)	B
MH10X	—	1	For 2-1/2" regular hub opening (add hub adapter plate BS052 if used with units having 4" hub openings)
MH12X	PH12	1-1/4	
MH15	PH15	1-1/2	
MH20	PH20	2	
MH25	PH25	2-1/2	
MH30	—	3	For 4" hub opening
MH35	—	3-1/2	
MH40	—	4	

Supplied with 4 Robertson head screws.

Meter Sockets



METER SOCKET ACCESSORIES

Hub Adapter Plate



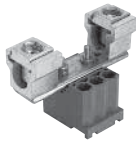
BS052	Permits use of regular size hubs on larger hub openings
--------------	---

Hub Opening Closure Plates



BS051	Inside attachment for regular hub opening (ie: 1" to 2-1/2")
BS054	Inside attachment for larger hub opening (ie: 3" to 4")

Insulated Neutral Kits



IN1000BA, IN1000BE, IN1000PL	100 Amp. max.
IN2000BS, IN2000PL	200 Amp. max.

Specify socket upon ordering.

Insulated Neutral Kit



IN4000JS	400 Amp. max. (JS4)
-----------------	---------------------

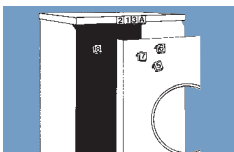
Ground Lug On Neutral Kit



GN2000*	200 Amp. MAX. for BQ2, BS2 Series
----------------	-----------------------------------

* CSA not applicable

Identification Markers



No. 0 through No. 9	Clipped to the upper lip of the enclosure; provides permanent customer identification.
No. A through No. Z	
No. SERVICE	Packed and sold in polyethylen bags of 10 identical markers except "SERVICE" which has 7 individual letters.

Replacement + Block Assemblies

Consist of thermoplastic insulators with jaws and connectors assembled for replacement of one meter socket

BA3-X	Fits BA3 / BE1 Series
BS2-X	Fits BQ2 / BS2 Series

Note: Add suffix "B" to cat. no. above if mounting bridge is required



METER SOCKET ACCESSORIES

Fifth Jaw Assemblies

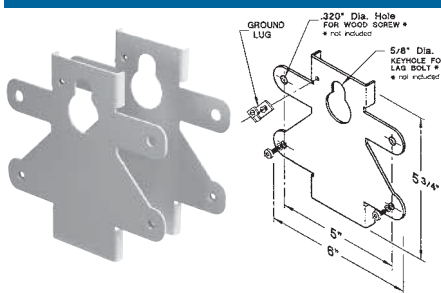


	CATALOGUE NUMBER	R3	BA3	BE1	BQ2 / BS2
Standard capacity 9 o'clock position	C205	✓	✓	✓	✓
Full capacity 9 o'clock position	Z105*	✓	✓	✓	
	Z205*				✓
Full capacity 6 o'clock position	CM-B106*			✓	✓
	B206*				Units with "R" bridges only
	B306*† (mono block application)				✓

* CSA not applicable

† For mono blocks only

Pole Mount Bracket Kit

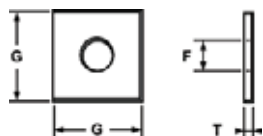


PMB200

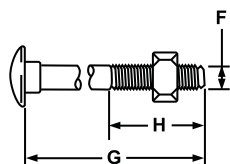
- Secures Microelectric meter socket to a wooden pole via:
Option 1 - Use a lag bolt through 5/8" center keyhole
Option 2 - Use the two side bracket mounting holes (0.320" dia.) to wrap around the pole
- Attach meter socket using one or two bracket(s). PMB200 kit comes complete with 2 brackets, 1 ground connector. Conductor range: 14-2 AWG. Includes assembly hardware

Note: Suitable for any Microelectric meter socket with mounting holes 5" apart. Use with model series: BA3, BE1, BQ2, CL, C01, C02, CT, M02, PL17, PL27, VT.

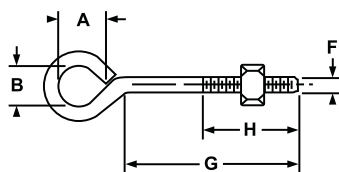
Pole Line Hardware



CATALOGUE NUMBER	DESCRIPTION	BOLT SIZE (in.)	G SIZE (in.)	T THICK. (in.)	WEIGHT (100 PCS)		STD. PKG
					lb.	kg	
RC729	Square washer	5/8	2	3/16	22	10.0	400



CATALOGUE NUMBER	DESCRIPTION	F DIA. (in.)	G LENGTH (in.)	H MIN. (in.)	WEIGHT (100 PCS)		STD. PKG
					lb.	kg	
BC301L	Carriage bolt	3/8	1-1/2	1-1/2	11	5.0	50



CATALOGUE NUMBER	DESCRIPTION	F DIA. (in.)	G LENGTH (in.)	H MIN. (in.)	WEIGHT (100 PCS)		STD. PKG
					lb.	kg	
B0506	Oval eye bolt	5/8	6	3	122	55.4	50
B0508	Oval eye bolt	5/8	8	4	136	61.8	50
B0510	Oval eye bolt	5/8	10	4	150	68.1	50
B0512	Oval eye bolt	5/8	12	4	168	76.3	50

METER SOCKET ACCESSORIES

Pole Mounting Kit



PMBJS4

Kit includes :

- 2 Support hangers
- 1 1/2" x 4" Lag bolt
- 4 3/8" x 3" Lag bolts
- 4 5/16" x 1" Carriage bolts, nuts, lock washers

Meter Adaptor Bracket



C03417M-1-FG

- Adjustable Mounting Bracket for C02 series meters to adapt to Seimens, SD and Cutler Hammer breakers

Flexible Braid Kit



C02FB-KIT

- Flexible braid adaptor kit for C02 series meter sockets for field installation. To be used with Cutler Hammer breakers

Micro-ID-Kit



MICRO-ID-KIT

The MICRO-ID-KIT comes in an easy to carry blue metal carrying case with the following list of markers

- 10 of No. A thru D
- 10 of No. 0 thru 9
- 10 of No. SERVICE
- 4 CM-BS100 Jumper Bar 200 Amp. max.
- 10 LS500 Meter Jaw Safety Shroud