

Table of Contents

IBERVILLE®



| | |
|---|----------------|
| Brackets, Clamps, Partitions | 64 - 65 |
| Concrete Rings | 46 |
| Device Boxes and Covers | 14 - 27 |
| Extension Rings | 57, 73 |
| High Voltage Boxes 347 Volt | 49 - 53 |
| LHTQ Family | 12 - 13 |
| Low Voltage Mounting Brackets | 67 - 68 |
| Masonry Boxes | 48 |
| Mud Boxes | 47 |
| NuTek® Non-Metallic Boxes | 70 - 72 |
| Octagonal Boxes and Covers | 32 - 35 |
| Power / Communication | 54 - 55 |
| Pre-Ganged Boxes and Covers | 56 |
| Protector Plates | 66 |
| Rework Boxes and applications | 58 - 59 |
| Square Boxes and Covers - 4" | 36 - 41 |
| Square Boxes and Covers - 4-11/16" | 42 - 43 |
| Stainless Steel Wall Plates | 28 - 31 |
| Steel Stud Boxes | 60 - 63 |
| Technical Information | 2 - 11 |
| Utility Boxes and Covers | 44 - 45 |
| Vapour Barriers | 69, 73 |
| Alphanumeric Index | 74 - 78 |

Technical Specifications

There are 10 major types of Electrical Boxes used in Canada. All these types of boxes serve specific purposes and are offered with various features / characteristics.

| Type | Purpose | Features / Characteristics |
|------------------------------------|---|---|
| Device Boxes | <ul style="list-style-type: none"> › Flush installation of a device (switch, receptacle, thermostat, ...). | <ul style="list-style-type: none"> › From 1-1/2" deep up to 3" deep. › Available options: cable clamps, brackets, gangable. › For new or old work. |
| Octagonal Boxes | <ul style="list-style-type: none"> › Wire connections (junction box). › Light fixture installation. › Temporary device installation. | <ul style="list-style-type: none"> › 3 depths available: 1/2", 1-1/2", 2-1/8". › Available options: cable clamps, brackets, extensions. |
| 4" Square Boxes | <ul style="list-style-type: none"> › Wire connections (junction box). › Flush or surface device installation (special cover required). | <ul style="list-style-type: none"> › 2 depths available: 1-1/2", 2-1/8". › Available options: brackets and extensions. |
| 4-11/16" Square Boxes | <ul style="list-style-type: none"> › Range / Dryer receptacle installation. › Wire connections (junction box). › Flush device installation (special cover required). | <ul style="list-style-type: none"> › 2 depths available: 1-1/2", 2-1/8". › Available options: brackets and extensions. |
| Utility Boxes | <ul style="list-style-type: none"> › Surface installation of a device (special cover required). | <ul style="list-style-type: none"> › 2 major models available: BC-1110, BC-2020. › Available options: brackets and extensions. |
| 347 Volt Boxes | <ul style="list-style-type: none"> › Installation of 347 V switches for commercial / industrial lighting. | <ul style="list-style-type: none"> › Device mounting holes are 1/4" further apart. › Models available for flush or surface installation. |
| Concrete Rings | <ul style="list-style-type: none"> › Wire connections in concrete slabs. | <ul style="list-style-type: none"> › 1-1/2" deep to 6" deep. |
| Masonry Boxes | <ul style="list-style-type: none"> › Device installation in masonry (concrete, bricks, ...) construction. | <ul style="list-style-type: none"> › 2-1/2" deep and 3-1/2" deep. › From 1 to 6 gang. |
| Pre-ganged Boxes | <ul style="list-style-type: none"> › Sturdy boxes for multiple device installation (special covers required). | <ul style="list-style-type: none"> › 2" deep. › From 2 to 6 gang. |
| Power / Communication Boxes | <ul style="list-style-type: none"> › Installation of communication devices (cable TV, telephone, ...) side by side with power devices. | <ul style="list-style-type: none"> › Communication devices concealed within a box or not. › 2 gang covers required. |

How to Select the Right Box

IBERVILLE®

Technical Specifications

The selection of the proper box for a given job, is a function of 2 major factors: the application and the type of construction

| Type of Construction | APPLICATION | |
|-----------------------------------|--|---|
| | Device Installation | Wire Connection |
| Flush Installation | <ul style="list-style-type: none"> › Device boxes and wall plates. › Square boxes and raised covers. › Pre-ganged boxes and covers. | <ul style="list-style-type: none"> › Octagonal boxes and blank covers. › Square boxes and blank covers. |
| Surface Installation | <ul style="list-style-type: none"> › Utility boxes and covers. › Square boxes and surface covers. | <ul style="list-style-type: none"> › Octagonal boxes and blank covers. › Square boxes and blank covers. |
| New Construction | <ul style="list-style-type: none"> › Device boxes and wall plates. › Utility boxes and covers. › Square boxes and covers. | <ul style="list-style-type: none"> › Octagonal boxes and blank covers. › Square boxes and blank covers. |
| Old Work | <ul style="list-style-type: none"> › Rework device boxes (special brackets). › Device boxes plus 820-D ("F" clips). › Switch Box Extension. › Square extension and cover. › Utility boxes and covers. | <ul style="list-style-type: none"> › Octagonal rework boxes (special brackets). › Octagonal extensions and blank covers. › Square extensions and blank covers. |
| Drywall / Wood Stud | <ul style="list-style-type: none"> › Device boxes and wall plates. › Square boxes and raised covers. | <ul style="list-style-type: none"> › Octagonal boxes and blank covers. › Square boxes and blank covers. |
| Drywall / Metal Stud | <ul style="list-style-type: none"> › Steel stud device boxes and wall plates. › Steel stud square boxes and raised covers. | <ul style="list-style-type: none"> › Steel stud octagonal boxes and blank covers. › Steel stud square boxes and blank covers. |
| Masonry / Concrete | <ul style="list-style-type: none"> › Masonry boxes and wall plates. › Pre-ganged boxes and covers. | <ul style="list-style-type: none"> › Concrete rings and covers. |
| Nonmetallic Sheathed Cable | <ul style="list-style-type: none"> › Device boxes with "LOOMEX" cable clamps. › Device boxes with KOs and "LOOMEX" connectors. | <ul style="list-style-type: none"> › Octagonal boxes with "LOOMEX" cable clamps and blank covers. › Octagonal / Square boxes with KOs and "LOOMEX" connectors. |
| Armoured Cable | <ul style="list-style-type: none"> › Device boxes with "BX" cable clamps. › Device boxes with KOs and "BX" connectors. | <ul style="list-style-type: none"> › Octagonal boxes with "BX" cable clamps and blank covers. › Octagonal / Square boxes with KOs and "BX" connectors. |
| Conduit / E.M.T. | <ul style="list-style-type: none"> › Device boxes with conduit KOs and E.M.T. connectors or rigid conduit and locknuts. | <ul style="list-style-type: none"> › Octagonal / Square boxes with conduit KOs and E.M.T. connectors or rigid conduit and locknuts. |

The selection is also guided by the physical dimensions of the box and, to a certain extent, by some personal preferences.

Physical dimensions: In a flush installation, the depth of the box is limited by the wall thickness. The cubic capacity of the box is also a major factor to consider. According to the C.E.C., only a limited number of conductors are allowed inside a box of a given cubic capacity (see maximum wire fill chart on page 11).

Personal preferences: Device boxes are available either gangable or non-gangable. Gangable means that two or more boxes can be joined together, on the job site, to create a multi-gang box as required. Most boxes are also available with or without brackets.

Boxes with brackets are usually installed with screws running through the bracket mounting holes. There are numerous types of brackets either to satisfy a specific need (steel stud bracket or rework bracket) or simply because of personal preferences.

Boxes without brackets are usually nailed from the outside of the box or screwed in place from the inside.

Catalogue Number Designation



Technical Specifications

Most boxes have a 2 part Catalogue Number: a PREFIX ...

The prefix identifies the series' number, which indicates the type of box, its physical dimensions, as well as the properties of each series.

i.e.: **BC1104** is the prefix which identifies a: Device Box Gangable 2-1/2" deep (12.5 cu. in.)

| Series #: BC or CI as applicable | Cu. in. | Description |
|----------------------------------|-------------|--|
| 425 | 10 | › Gangable Rework Device Box — 2" deep |
| 525 | 12.5 | › Gangable Rework Device Box — 2-1/2" deep |
| 775 | 10 | › Gangable Device Box — 2-1/4" deep |
| 777 | 11 | › Non-gangable Rework Device Box — 2-1/4" deep |
| 1004 | 15 | › Gangable Device Box — 3" deep |
| 1018 | 18.0 | › Gangable Device Box — 3" deep |
| 1100 | 8 | › Gangable Device Box — 1-1/2" deep |
| 1102 | 10 | › Gangable Device Box — 2" deep |
| 1104 | 12.5 | › Gangable Device Box — 2-1/2" deep |
| 1110 | 16.5 | › Utility Box — 1-7/8" deep |
| 1141 | 13 | › Utility Box — 1-1/2" deep |
| 1151 | 18.5 | › Utility Box — 2-1/8" deep |
| 1199 | 18.5 | › Utility Box — 2-1/8" deep |
| 1204 | 16 / gang | › 347 Volt Gangable Device Box — 2-1/2" deep |
| 1304 | 14.5 | › Gangable Device Box — 2-1/2" deep |
| 1504 | 15 | › Non-gangable Device Box — 2-1/2" deep |
| 1804 | 18 | › Gangable Device Box — 2-1/2" deep |
| 2004 | 18.5 | › Non-gangable Device Box — 2-3/4" deep |
| 2016 | 18.5 | › Non-gangable Device Box — 2-1/2" deep |
| 2018 | 13 | › Utility Box — 1-1/2" deep |
| 2020 | 14 | › Utility Box — 1-7/8" deep |
| 2104 | 12.5 / gang | › Non-gangable Device Box — 2-1/2" deep |
| 2304 | 14.5 | › Non-gangable Device Box — 2-1/2" deep |
| 3004 | 18 | › Gangable Device Box — 3" deep |
| 3102 | 12 | › Gangable Device Box — 2" deep |
| 3104 | 16 | › Gangable Device Box — 2-1/2" deep |
| 4104 | 12.5 | › Power / Communication Box — 2-1/2" deep |
| 4204 | 12.5 / gang | › Power / Communication Box — 2-1/2" deep |
| 4304 | 12.5 | › Power / Communication Box — 2-1/2" deep |
| 52151 | 21 | › 4" Square Box — 1-1/2" deep |
| 52171 | 30 | › 4" Square Box — 2-1/8" deep |
| 53151 | 21 | › 4" Square Extension — 1-1/2" deep |
| 53171 | 30 | › 4" Square Extension — 2-1/8" deep |
| 54151 | 15 | › 4" Octagonal Box — 1-1/2" deep |

Technical Specifications

| Series #: BC or CI as applicable | Cu. in. | Description |
|----------------------------------|--------------|---|
| 54171 | 21 | › 4" Octagonal Box — 2-1/8" deep |
| 54521 / 54591 | see page 46 | › Concrete Rings — 1-1/2" to 6" deep |
| 55151 | 15 | › 4" Octagonal Extension — 1-1/2" deep |
| 55171 | 21 | › 4" Octagonal Extension — 2-1/8" deep |
| 56111 | 5 | › 4" Ceiling Pan — 1/2" deep |
| 72151 | 30 | › 4-11/16" Square Box — 1-1/2" deep |
| 72171 | 42 | › 4-11/16" Square Box — 2-1/8" deep |
| 73151 | 30 | › 4-11/16" Square Extension — 1-1/2" deep |
| 73171 | 42 | › 4-11/16" Square Extension — 2-1/8" deep |
| CWB | 16.0 | › Concrete wall box |
| GSB | see page 56 | › Pre-ganged Box — 2" deep |
| MBD | 21 / gang | › Masonry Box — 3-1/2" deep |
| MBD-HV | 22.25 / gang | › 347 Volt Masonry Box — 3-3/8" deep |
| MBS | 14 / gang | › Masonry Box — 2-1/2" deep |
| MBS-HV | 20.25 / gang | › 347 Volt Masonry Box — 2-3/8" deep |
| OBEX | 5 | › 4" Round Extension — 1/2" deep |
| WBF | — | › Low Voltage Mounting Bracket |

Technical Specifications

... and a SUFFIX

The suffix identifies the various features available for each series of boxes (in most cases, the suffix is strictly alphabetical).

i.e.: **L** is the suffix which identifies a box having: Cable clamps for nonmetallic sheathed cable.

Catalogic

| | |
|----------------------|--|
| B | .Bracket (nailing style with prongs). |
| ER | .Concrete ring extension. |
| HV | .High voltage. |
| K | .Concentric knockouts (1/2" and 3/4"). |
| KSB | .Concentric knockouts (1/2" and 3/4") and side bracket. |
| KSS1X-1 | .Concentric knockouts (1/2" and 3/4"), mounting strap for steel stud installations and integral additional support bracket. Recessed 1". 1 gang. |
| KSSX | .Concentric knockouts (1/2" and 3/4"), mounting strap for steel stud installations and integral additional support bracket. |
| KSSX-1 | .Concentric knockouts (1/2" and 3/4"), mounting strap for steel stud installations and integral additional support bracket. Recessed 1". |
| L | .Clamps for nonmetallic sheathed cable. |
| LA | .Clamps for nonmetallic sheathed cable or armoured cable. |
| LA-HV | .Clamps for nonmetallic sheathed cable or armoured cable. High voltage. |
| LB | .Clamps for nonmetallic sheathed cable and bracket (nailing style with prongs). |
| LBA | .Clamps for armoured cable or nonmetallic sheathed cable and bracket (nailing style with prongs). |
| LD | .Clamps for nonmetallic sheathed cable and "Swing-Arms" mounting device. |
| LE | .Less mounting ears. |
| LF | .Clamps for nonmetallic sheathed cable. Direct fan to box mounting. |
| LH | .Clamps for armoured cable or nonmetallic sheathed cable. Extended sides for external nailing. |
| LHA | .Clamps for armoured cable or nonmetallic sheathed cable. Extended sides for external nailing. |
| LHT | .Clamps for nonmetallic sheathed cable or armoured cable. Extended sides for external nailing. Positioning tabs and 2 embossed mounting slots for internal screw installation. |
| LHTQ | .Clamps for nonmetallic sheathed cable or armoured cable. Extended sides for external nailing. Positioning tabs and 2 embossed mounting slots for internal screw installation. Special 1 screw quick mount feature. |
| LHTQ-2 | .Clamps for nonmetallic sheathed cable or armoured cable. Extended sides for external nailing. Positioning tabs and 2 embossed mounting slots for internal screw installation. Special 1 screw quick mount feature. 2 gangs. |
| LHTQ-3 | .Clamps for nonmetallic sheathed cable or armoured cable. Extended sides for external nailing. Positioning tabs and 2 embossed mounting slots for internal screw installation. 3 gangs. |
| LHTQ-4 | .Clamps for nonmetallic sheathed cable or armoured cable. Extended sides for external nailing. Positioning tabs and 2 embossed mounting slots for internal screw installation. 4 gangs. |
| LLE | .Clamps for nonmetallic sheathed cable or armoured cable. Less mounting ears. |
| LLE-2 | .Clamps for nonmetallic sheathed cable or armoured cable. Less mounting ears. 2 gangs. |
| LLE-3 | .Clamps for nonmetallic sheathed cable or armoured cable. Less mounting ears. 3 gangs. |
| LLE-4 | .Clamps for nonmetallic sheathed cable or armoured cable. Less mounting ears. 4 gangs. |
| LLEA | .Clamps for armoured cable or nonmetallic sheathed cable. Less mounting ears. |
| LLEA-2 | .Clamps for armoured cable or nonmetallic sheathed cable. Less mounting ears. 2 gangs. |
| LMS | .Clamps for nonmetallic sheathed cable or armoured cable and mounting strap. |
| LMSA | .Clamps for nonmetallic sheathed cable or armoured cable and mounting strap. |
| LN | .Clamps for nonmetallic sheathed cable or armoured cable. Staked nails. |

Technical Specifications

Catalogic

| | |
|----------|---|
| LRB | .Clamps for nonmetallic sheathed cable or armoured cable and pivoting ends for “rework” installation. |
| LRE | .Clamps for nonmetallic sheathed cable or armoured cable. Recessed ears. |
| LRW | .Clamps for nonmetallic sheathed cable or armoured cable and spring mounting device for installation in finished walls. |
| LSBA | .Clamps for armoured cable or nonmetallic sheathed cable and side bracket. |
| LSSA1X-1 | .Clamps for armoured cable or nonmetallic sheathed cable, mounting strap for steel stud installations and integral additional support bracket. Recessed 1” |
| LSSA-2X | .Clamps for armoured cable or nonmetallic sheathed cable, mounting strap for steel stud installations and integral additional support bracket. 2 gangs. |
| LSSA-3X | .Clamps for armoured cable or nonmetallic sheathed cable, mounting strap for steel stud installations and integral additional support bracket. 3 gangs. |
| LSSAX | .Clamps for armoured cable or nonmetallic sheathed cable, mounting strap for steel stud installations and integral additional support bracket. |
| LSSAX-HV | .Clamps for nonmetallic sheathed cable or armoured cable mounting strap for steel stud installations and integral additional support bracket. High voltage. |
| LSSAX-1 | .Clamps for armoured cable or nonmetallic sheathed cable, mounting strap for steel stud installations and integral additional support bracket. Recessed 1”. |
| LSSX | .Clamps for nonmetallic sheathed cable or armoured cable, mounting strap for steel stud installations and integral additional support bracket. |
| LSS2X | .Clamps for nonmetallic sheathed cable or armoured cable, mounting strap for steel stud installations and integral additional support bracket. 2 gangs. |
| LSS3X | .Clamps for nonmetallic sheathed cable or armoured cable, mounting strap for steel stud installations and integral additional support bracket. 3 gangs. |
| LSSX-1 | .Clamps for nonmetallic sheathed cable or armoured cable, mounting strap for steel stud installations and integral additional support bracket. Recessed 1”. |
| LSS1X-1 | .Clamps for nonmetallic sheathed cable or armoured cable, mounting strap for steel stud installations and integral additional support bracket. Recessed 1”. 1 gang box. |
| LSS2X-1 | .Clamps for nonmetallic sheathed cable or armoured cable, mounting strap for steel stud installations and integral additional support bracket. Recessed 1”. 2 gang box. |
| LSS3X-1 | .Clamps for nonmetallic sheathed cable or armoured cable, mounting strap for steel stud installations and integral additional support bracket. Recessed 1”. 3 gang box. |
| LX | .Self-locking spring clamps for nonmetallic sheathed cable. |
| LV | .V style bracket. |
| P | .Partition. |
| R | .Utility box extension. |
| SB | .Side bracket. |
| SSX | .Mounting strap for steel stud installations and integral additional support bracket. |
| SSX-HV | .Mounting strap for steel stud installations and integral additional support bracket. (Mounting ears spaced for high voltage devices) |
| SSX-1 | .Mounting strap (offset for 2 x 1/2” drywall thicknesses) for steel stud installations and integral additional support bracket. |
| VB | .Vapour barrier. |
| 1/2 | .1/2” conduit knockouts. |
| 1 | .1” conduit knockouts. |

When joined together, they identify a particular box and nothing else.

Therefore, **BC2104-LX** represents a non-gangable device box, 2-1/2” deep with self-locking clamps for nonmetallic sheathed cable.

DEVICE BOXES

Available Models

IBERVILLE®

Technical Specifications

| | | Gangable | | | | | | | | | | | | | | Non-Gangable | | | | | | | |
|---|--------------|----------|------|------|------|-------|-------|-------|-------|-------|-------|-------|-------|------|------|--------------|-------|-------|-------|-------|-------|-------|---|
| Depth | | 1-1/2 | 2 | 2 | 2 | 2-1/4 | 2-1/2 | 2-1/2 | 2-1/2 | 2-1/2 | 2-1/2 | 2-1/2 | 2-1/2 | 3 | 3 | 3 | 2-1/4 | 2-1/2 | 2-1/2 | 2-1/2 | 2-3/4 | 2-1/2 | |
| Cu. in. | | 8.0 | 10.0 | 10.0 | 12.0 | 10.0 | 12.5 | 12.5 | 14.5 | 12.5 | 12.5 | 16.0 | 18.0 | 15.0 | 18.0 | 18.0 | 11.0 | 12.5 | 14.5 | 15.0 | 18.5 | 25.0 | |
| Series # BC / CI | | 1100 | 1102 | 425 | 3102 | 775 | 525 | 1104 | 1304 | 4104 | 4304 | 3104 | 1804 | 1004 | 1018 | 3004 | 777 | 2104 | 2304 | 1504 | 2004 | 4204 | |
| Conduit Knockouts | Basic Model | | ✓ | ✓ | | | | ✓ | | | | | | ✓ | | | | | | | | | |
| | B | | | | | | | ✓ | | | | | | | | | | | | | | | |
| | K | | | | | | | ✓ | | | | | | | | | | | | | | | |
| | KSSX | | | | | | | | | | | ✓ | | | | | | | | | | | ✓ |
| | KSS1X-1 | | | | | | | | | | | ✓ | | | | | | | | | | | |
| | LE | | | | | | | ✓ | | | | | | | | | | | | | | | |
| | SB | | ✓ | | | | | ✓ | | | | | | | | | | | | | | | |
| | SSX | | | | ✓ | | | | | | | ✓ | | | | | | | | | | | |
| Nonmetallic Sheathed Cable Clamps (Loomex, NMD90) | L | ✓ | ✓ | ✓ | | ✓ | ✓ | ✓ | | ✓ | | | | ✓ | | | | | | | | | |
| | LB | | | | | | | ✓ | | | | | | ✓ | | | | | | | | | |
| | LD | | | | | ✓ | | | | | | | | | | | | | | | | | |
| | LH | | ✓ | | | | | | | | | ✓ | ✓ | ✓ | | ✓ | | | | | | ✓ | |
| | LHT | | | | | | | ✓ | | | | | | | | | | | | | | | |
| | LHTQ | | | | | | | | ✓ | | | ✓ | | | ✓ | | | | ✓ | | | | |
| | LLE | ✓ | | | | | | | | | | | | | | | | ✓ | | ✓ | | | |
| | LHTQ-2/LLE-2 | | | | | | | | | | | | | | | | | ✓ | | | | | |
| | LHTQ-3/LLE-3 | | | | | | | | | | | | | | | | | ✓ | | | | | |
| | LHTQ-4/LLE-4 | | | | | | | | | | | | | | | | | ✓ | | | | | |
| | LMS | | | | | | | ✓ | | | | | | | | | | | | | | | |
| | LN | | | | | | | | | | | | | | | | | | ✓ | | | | |
| | LRB | | | | | | | | | | | | | | | | | ✓ | | | | | |
| | LRE | ✓ | | | | | | | | | | | | | | | | | | | | | |
| | LRW | | | | | | | ✓ | | | | | | | | | | | | | | | |
| | LSSX | | | | | | | | | | | ✓ | ✓ | | | ✓ | | ✓ | | | | | ✓ |
| | LSS2X | | | | | | | | | | | | | | | | | ✓ | | | | | |
| | LSS3X | | | | | | | | | | | | | | | | | ✓ | | | | | |
| | LSSX-1 | | | | | | | | | | | | | | | | ✓ | | | | | | |
| | LSS1X-1 | | | | | | | | | | | | | | | | | ✓ | | | | | |
| LSS2X-1 | | | | | | | | | | | | | | | | | ✓ | | | | | | |
| Armoured Cable Clamps (BX, AC90) | LX | | | | | | | | | | | | | | | | | ✓ | | | | ✓ | |
| | LA | | | | | | | ✓ | | ✓ | | | | | | | | | | | | | |
| | LBA | | | | | | | ✓ | | | | | | | | | | | | | | | |
| | LHA | | | | | | | ✓ | | | | ✓ | ✓ | ✓ | | | | | | | | ✓ | |
| | LLEA | | | | | | | | | | | | | | | | | ✓ | | | | | |
| | LLEA-2 | | | | | | | | | | | | | | | | | ✓ | | | | | |
| | LMSA | | | | | | | ✓ | | | | | | | | | | | | | | | |
| | LSBA | | | | | | | ✓ | | | | | | | | | | | | | | | |
| | LSSAX | | | | ✓ | | | | | | | ✓ | ✓ | | | | | ✓ | | ✓ | | ✓ | |
| | LSSA-2X | | | | | | | | | | | | | | | | | ✓ | | | | | |
| | LSSA-3X | | | | | | | | | | | | | | | | | ✓ | | | | | |
| | LSSAX-1 | | | | | | | | | | | | | | | | ✓ | | | | | ✓ | |
| LSSA1X-1 | | | | | | | | | | | ✓ | | | | | | | | | | | ✓ | |

Features, Brackets, Clamps, Knockouts

IBERVILLE®

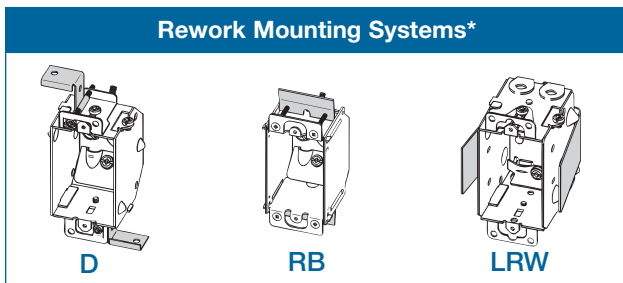
Technical Specifications

IBERVILLE® steel boxes and covers are manufactured from hot dipped galvanized steel sheet. Hot dipped galvanizing is one of the most effective methods of protecting bare steel from corrosion. This zinc coating is uniformly distributed both inside and outside the box, and not only protects the surface of the steel but also sacrifices itself through galvanic action to prevent corrosion at edges, holes (plain or tapped) and possible scratches. The use of hot dipped galvanized steel sheet ensures full zinc protection for all **IBERVILLE®** steel boxes and covers.



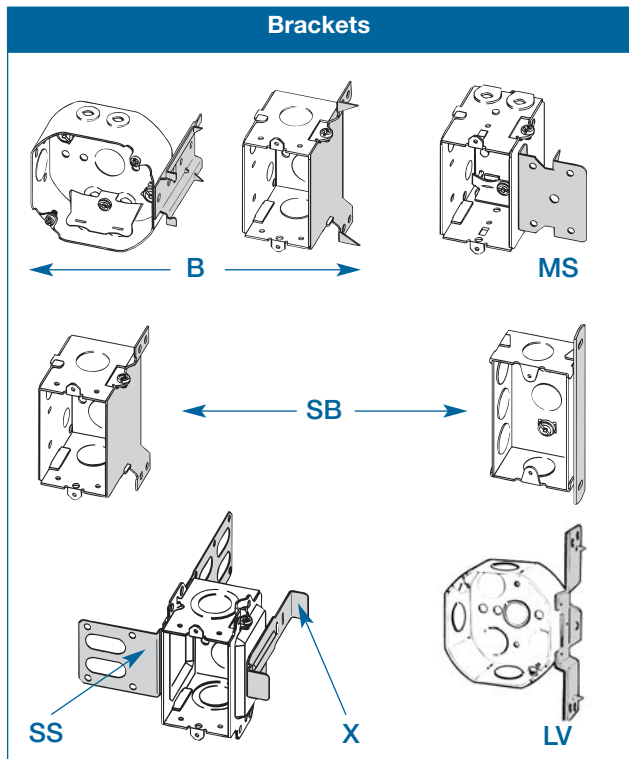
IBERVILLE® steel boxes incorporate numerous features which result in boxes rugged enough to stand up against the severest abuse.

- › Pre-set positioning tabs for perfectly aligned installation.
- › Formed stabilizing embosses, which prevent rocking and will not flatten under the impact of a hammer.
- › The Wedgelock system, which locks sides even tighter together when installed.
- › Diamond shaped pryouts, for easy removal.
- › Loomex cable clamps, with supporting legs that maintain elevation for easier cable entry.
- › Combination "slot / Robertson head" screws, which allow the use of more than one type of screwdriver.
- › Large pan head ground screws above two wire retainers.
- › Various types of brackets for different applications.



* C.E.C. 2009 Rule 12-3010 (2).
Where ganged sectional boxes are used, they shall be secured to metal supports or to wooden boards at least 19 mm thick that are rigidly secured to the structural units.

| Clamps | Knockouts / Pryouts | | | | | | |
|---|--|------|------|--|------|--|----|
| <p>Clamp for nonmetallic sheathed cable "Loomex".</p> <p>Device Boxes</p> | <p>Conduit Knockouts</p> <table border="0"> <tr> <td></td> <td>1/2"</td> </tr> <tr> <td></td> <td>3/4"</td> </tr> <tr> <td></td> <td>1"</td> </tr> </table> | | 1/2" | | 3/4" | | 1" |
| | | 1/2" | | | | | |
| | | 3/4" | | | | | |
| | 1" | | | | | | |
| <p>Clamp for nonmetallic sheathed cable "Loomex".</p> <p>Octagonal Boxes</p> | | | | | | | |
| <p>Clamp for armoured cable "BX" & nonmetallic sheathed cable "Loomex".</p> | <p>Cable Pryouts</p> | | | | | | |



Maximum WIRE FILL CHART

IBERVILLE®

Technical Specifications

The Canadian Electrical Code specifies that the maximum number of conductors to be contained in a box is determined by the following factors:

- › The total volume of the box assembly (box, extension, raised cover).
- › The size (AWG) of the insulated conductors.
- › The presence of one or more fixture studs or hickey.
- › The number of wire connectors in the box.
- › The presence and thickness of flush devices mounted on a single strap.

The table below indicates the maximum number of conductors allowed in a box containing 0 or 1 wire connectors and no fixture stud, hickey or flush device.

Space for conductors in boxes

| Size of Conductors (AWG) | Usable space required for each Insulated Conductor (cu. in.) (cu. cm.) | |
|--------------------------|--|------|
| 14 | 1.50 | 24.6 |
| 12 | 1.75 | 28.7 |
| 10 | 2.25 | 36.9 |
| 8 | 2.75 | 45.1 |
| 6 | 4.50 | 73.7 |

| Cubic Inch Capacity * (Milliliter) | Box Series No. BC or CI as applicable | Maximum Number of Conductors ** (with 0 or 1 wire connectors) | | | |
|------------------------------------|---------------------------------------|---|--------|--------|-------|
| | | 14 AWG | 12 AWG | 10 AWG | 8 AWG |
| 5 (81) | 56111, OBEX | 3 | 2 | 2 | - |
| 8 (131) | 1100 | 5 | 4 | 3 | 2 |
| 10 (163) | 425, 775, 1102 | 6 | 5 | 4 | 3 |
| 11 (180) | 777 | 7 | 6 | 4 | 4 |
| 12 (197) | 3102 | 8 | 6 | 5 | 4 |
| 12.5 (204/gang) | 525, 1104, 2104, 4104, 4204, 4304 | 8 | 7 | 5 | 4 |
| 13 (213) | 1141, 2018 | 8 | 7 | 5 | 4 |
| 14 (229/gang) | 2020, MBS | 9 | 8 | 6 | 5 |
| 14.5 (237) | 1304, 2304 | 9 | 8 | 6 | 5 |
| 15 (245) | 1004, 1504, 54151, 55151 | 10 | 8 | 6 | 5 |
| 16 (262/gang) | 1004-LB, 1204, 3104 | 10 | 9 | 7 | 5 |
| 16.5 (270) | 1110, 1110-HV | 11 | 9 | 7 | 6 |
| 18 (295) | 1018, 1804, 3004, 54521 | 12 | 10 | 8 | 6 |
| 18.5 (303) | 1151, 1199, 2004 | 12 | 10 | 8 | 6 |
| 20.25 (331/gang) | MBS-HV | 13 | 11 | 9 | 7 |
| 21 (344/gang) | 52151, 53151, 54171, MBD | 14 | 12 | 9 | 7 |
| 22.25 (364/gang) | MBD-HV | 14 | 12 | 9 | 8 |
| 24 (393) | 54531 | 16 | 13 | 10 | 8 |
| 25 (410) | 2104 (2 gang) | 16 | 14 | 11 | 9 |
| 27 (442) | 2304 (2 gang) | 18 | 15 | 12 | 9 |
| 30 (491) | 52171, 53171, 72151, 73151 | 20 | 17 | 13 | 10 |
| 36 (590) | 54551 | 24 | 20 | 16 | 13 |
| 37.5 (614) | 2104 (3 gang) | 25 | 21 | 16 | 13 |
| 39.5 (647) | 2304 (3 gang) | 26 | 21 | 17 | 17 |
| 42 (688) | 54561, 72171, 73171 | 28 | 24 | 18 | 15 |
| 50 (819) | 2104 (4 gang) | 33 | 28 | 22 | 18 |
| 52 (853) | 2304 (4 gang) | 34 | 29 | 23 | 18 |

* When a single strap device is more than 1" thick, reduce box capacity by: 5 cu. in. x thickness of device.

** The maximum number of conductors shown in the table must be reduced in each of the following cases:

- › One conductor, if the box contains one or more fixture studs or hickey.
- › One conductor for every additional pair of wire connectors (1 conductor for 2 or 3 wire connectors, 2 conductors for 4 or 5 wire connectors...).
- › Two conductors for each single strap flush device up to 1" thick.
- › 1 cu. in = 16.4 milliliter = 16.4 cubic centimeter
- › 1 cubic centimeter = 1 milliliter = 0.061 cu. in

Device Boxes

Armoured and Nonmetallic Sheathed Cable Clamps

IBERVILLE®

LHTQ™ Family



Presenting the New LHTQ family of IBERVILLE boxes. With their additional cu. in. capacity this family of boxes is designed for any installation that may require a greater number of conductors such as heating, GFCI and arc-fault applications.

What's more, because it's an LHTQ, installation is always fast and accurate. Look for these practical and time saving features on all LHTQ models.

- *positioning guides for drywall and outside wall applications*
- *retractable positioning tabs*
- *internally embossed mounting slots*
- *flat box sides for maximum stability*
- *holding prongs*
- *single and 2 gang boxes are CSA approved for one-screw mounting*

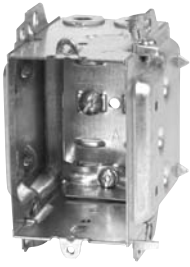
The LHTQ device box family is available at your local participating electrical distributor.



Device Boxes

Armoured and Nonmetallic Sheathed Cable Clamps

IBERVILLE®



BC1018-LHTQ

Internally embossed slots for screw mounting. Fixed positioning tabs for single 1/2" drywall along with retractable positioning tabs for double 1/2" drywall applications. Fixed positioning tabs for outside wall applications. Holding prongs. One screw mounting.



BC1304-LHTQ

Internally embossed slots for screw mounting. Fixed positioning tabs for single 1/2" drywall along with retractable positioning tabs for double 1/2" drywall applications. Fixed positioning tabs for outside wall applications. Holding prongs. One screw mounting.



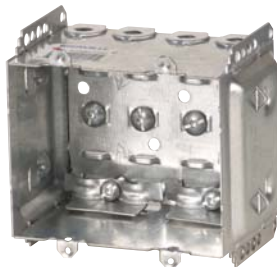
BC2004-LHTQ

Internally embossed slots for screw mounting. Fixed positioning tabs for single 1/2" drywall along with retractable positioning tabs for double 1/2" drywall applications. Fixed positioning tabs for outside wall applications. Holding prongs. One screw mounting.



BC2304-LHTQ

Internally embossed slots for screw mounting. Fixed positioning tabs for single 1/2" drywall along with retractable positioning tabs for double 1/2" drywall applications. Fixed positioning tabs for outside wall applications. Holding prongs. One screw mounting.



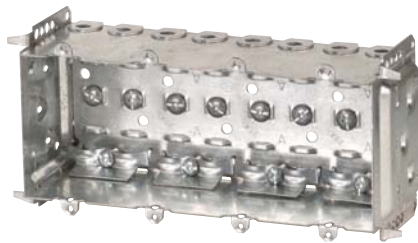
BC2304-LHTQ-2

Internally embossed slots for screw mounting. Fixed positioning tabs for single 1/2" drywall along with retractable positioning tabs for double 1/2" drywall applications. Fixed positioning tabs for outside wall applications. Holding prongs. One screw mounting.



BC2304-LHTQ-3

Internally embossed slots for screw mounting. Fixed positioning tabs for single 1/2" drywall along with retractable positioning tabs for double 1/2" drywall applications. Fixed positioning tabs for outside wall applications. Holding prongs.



BC2304-LHTQ-4

Internally embossed slots for screw mounting. Fixed positioning tabs for single 1/2" drywall along with retractable positioning tabs for double 1/2" drywall applications. Fixed positioning tabs for outside wall applications. Holding prongs.



BC3104-LHTQ

Internally embossed slots for screw mounting. Fixed positioning tabs for single 1/2" drywall along with retractable positioning tabs for double 1/2" drywall applications. Fixed positioning tabs for outside wall applications. Holding prongs. One screw mounting.

Technical Specifications

| Cat. No. | Dimensions H x W x D (in.) | Capacity (Cu. in.) | Gangable Yes or No | Features | | | Pryouts ends |
|----------------------|-------------------------------|-----------------------|-----------------------|--------------------|-----------|----------------------------|-----------------|
| | | | | One screw mounting | Pos. tabs | Prov. for external nailing | |
| BC1018-LHTQ | 3 x 2 x 3 | 18.0 | Y | Y | Y | Y | 4 |
| BC1304-LHTQ | 3 x 2 x 2-1/2 | 14.5 | Y | Y | Y | Y | 4 |
| BC2004-LHTQ | 3-3/4 x 2-3/16 x 2-3/4 | 20.5 | N | Y | Y | Y | 4 |
| BC2304-LHTQ | 3 x 2 x 2-1/2 | 14.5 | N | Y | Y | Y | 4 |
| BC2304-LHTQ-2 | 3 x 3-3/4 x 2-1/2 | 27.0 | N | Y | Y | Y | 8 |
| BC2304-LHTQ-3 | 3 x 5-1/2 x 2-1/2 | 39.5 | N | N | Y | Y | 12 |
| BC2304-LHTQ-4 | 3 x 7-3/8 x 2-1/2 | 52.0 | N | N | Y | Y | 16 |
| BC3104-LHTQ | 3 x 2 x 2-1/2 | 16.0 | Y | Y | Y | Y | 4 |



Device Boxes

Low-profile electrical box

IBERVILLE®

NEW



The low-profile solution

IBERVILLE® presents our exclusive low-profile electrical box. The **BCR200** is the ideal solution for Novoclimat® construction.

- **Quick to install: at least 3 times faster than current methods**
- **No need to cut and damage the vapor barrier**
- **Can be installed on all types of vapor barriers certified Novoclimat®**
- **18 cubic inch capacity: 50% more than traditional boxes**
- **One CI4004 connector included**
- **CSA approved for mounting with only one screw**

That's not all!

IBERVILLE® also has a new and exclusive protector plate.

- **Protects cables running on top of a stud**
- **Easy to install**

Device Boxes

Low-profile electrical box

IBERVILLE®

As easy as 1•2•3



1 Position the box on top of the stud.



2 Screw the box to the stud using the center hole for one screw mounting.



3 Insert the cable into the box.



- View with drywall installed.
- Will accept most GFCI outlets.
- Maximum depth of 1-1/8".



The innovative design will allow you to easily extract the box without damaging the drywall.

CI66-PPH

The protector plate can be used for a single stud or multiple stud installations.



Technical Specifications

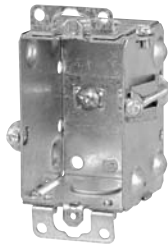
| Cat. No. | Capacity (Cu. in.) | Usage | Ground Screw | Knockout | Packaging |
|--|--------------------|-------|--------------|-------------|-----------|
| 2" Deep — Non-Gangable — 3-3/4" x 4" x 2" | | | | | |
| BCR2000 | 18.0 | KO | - | 2 x 1/2 in. | 25 |
| CI66-PPH | - | - | - | - | 50 |



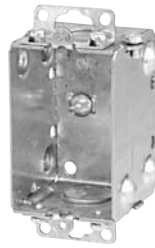
Device Boxes

Conduit Knockouts

IBERVILLE®



CI425



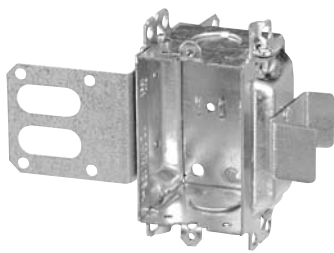
BC1102



CI1102-SB

"Screwlok" brackets for rework installation. Max. wall thickness: 5/8".

Recessed ears.



CI3102-SSX



BC1104



CI1104-B

"Wraparound" bracket for 1-5/8" steel studs. With integral support bracket.

Recessed ears.

Technical Specifications

| Cat. No. | Capacity (Cu. in.) | Features | | Knockouts | |
|---|-----------------------|----------|---------|-----------|-------------|
| | | ears | bracket | 1/2" ends | 1/2" bottom |
| 2" Deep — Gangable — 3" x 2" | | | | | |
| CI425 | 10.0 | flush | rework | 2 | - |
| BC1102 | 10.0 | recessed | - | 2 | - |
| CI1102-SB | 10.0 | - | "SB" | 2 | - |
| CI3102-SSX | 12.0 | - | "SSX" | 2 | - |
| 2-1/2" Deep — Gangable — 3" x 2" | | | | | |
| BC1104 | 12.5 | recessed | - | 2 | 2 |
| CI1104-B | 12.5 | - | "B" | 2 | 2 |

Device Boxes

Conduit Knockouts

IBERVILLE®



CI1104-K

Concentric knockouts. Recessed ears.

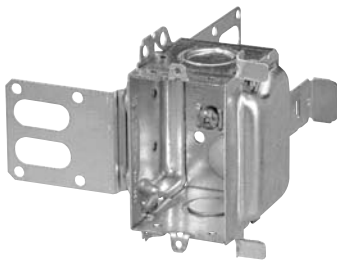


BC1104-LE

Less ears.

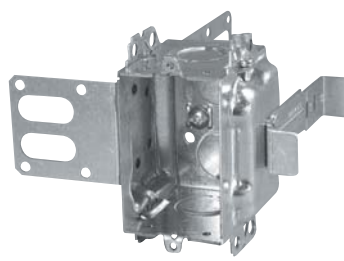


CI1104-SB



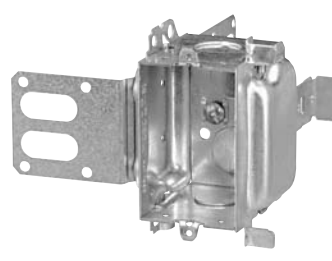
CI3104-KSSX

Concentric knockouts. "Wraparound" bracket for 2-1/2" and 3-5/8" steel studs. With integral support bracket.



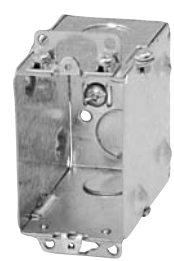
BC3104-KSS1X-1

Concentric knockouts. "Wraparound" bracket for 2-1/2" and 3-5/8" steel studs. With integral support bracket. Brackets positioned for 2 layers of 1/2" Drywall.



CI3104-SSX

"Wraparound" bracket for 2-1/2" and 3-5/8" steel studs. With integral support bracket.



CI1004

Recessed ears.

Technical Specifications

| Cat. No. | Capacity (Cu. in.) | Features | | Knockouts | | |
|---|-----------------------|----------|---------|-----------|-------------|-----------|
| | | ears | bracket | 1/2" ends | 1/2" bottom | 3/4" ends |
| 2-1/2" Deep — Gangable — 3" x 2" | | | | | | |
| CI1104-K | 12.5 | recessed | - | 2 | 2 | 2 |
| BC1104-LE | 12.5 | - | - | 2 | 2 | - |
| CI1104-SB | 12.5 | - | "SB" | 2 | 2 | - |
| CI3104-KSSX | 16.0 | - | "SSX" | 2 | 2 | 2 |
| BC3104-KSS1X-1 | 16.0 | recessed | "SSX" | 2 | 2 | 2 |
| CI3104-SSX | 16.0 | - | "SSX" | 2 | 2 | - |
| 3" Deep — Gangable — 3" x 2" | | | | | | |
| CI1004 | 15.0 | recessed | - | 2 | 2 | - |

| Cat. No. | Capacity (Cu. in.) | Usage | Ground Screw | Knockout | Packaging |
|--|-----------------------|-------|-----------------|-------------|-----------|
| 2" Deep — Non-Gangable — 3-3/4" x 4" x 2" | | | | | |
| BCR2000 | 18.0 | KO | - | 2 x 1/2 in. | 25 |
| CI66-PPH | - | - | - | - | 50 |



Device Boxes

Armoured and Nonmetallic Sheathed Cable Clamps

IBERVILLE®



BC1100-L

Flush ears.



BC1100-LLE

Less ears.



CI1100-LRE

Recessed ears.



CI425-L

"Screwlok" brackets for rework installation. Max. wall thickness: 5/8".



BC1102-L

Flush ears.



BC1102-LH

Provision for external nailing.

Technical Specifications

| Cat. No. | Capacity (Cu. in.) | Features | | Pryouts ends |
|---|-----------------------|----------|---------|-----------------|
| | | ears | bracket | |
| 1-1/2" Deep — Gangable — 3" x 2" | | | | |
| BC1100-L | 8.0 | flush | - | 4 |
| BC1100-LLE | 8.0 | - | - | 4 |
| CI1100-LRE | 8.0 | recessed | - | 4 |
| 2" Deep — Gangable — 3" x 2" | | | | |
| CI425-L | 10.0 | flush | rework | 4 |
| BC1102-L | 10.0 | flush | - | 4 |
| BC1102-LH | 10.0 | - | - | 4 |

Device Boxes

Armoured and Nonmetallic Sheathed Cable Clamps

IBERVILLE®



CI775-L

Flush ears.

BC775-LD

"Swing-arm" rework brackets. Max. wall thickness: 3/4".

BC777-LRB*

Pivoting ends for rework installation. Max. wall thickness: 1-1/8".

CI525-L

"Screwlok" brackets for rework installation. Max. wall thickness: 5/8".

BC1104-L

Flush ears.

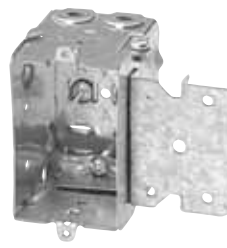


BC1104-LB



BC1104-LHT

Positioning tabs. Provision for external nailing. Two embossed mounting slots for internal screw installation.



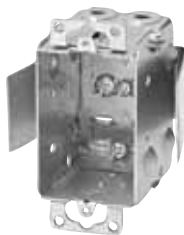
CI1104-LMS

Mounting strap with prongs. Recessed 1/2".



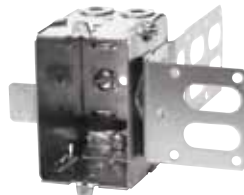
BC1104-LRB

Flat sides for rework applications.



BC1104-LRW

Rework bracket for closed wall applications. Max. wall thickness: 1".



BC1104-LSSX



BC1304-LHTQ

One screw mounting. Provision for external nailing. Positioning tabs for 1/2" and 3/4" drywall.

Technical Specifications

| Cat. No. | Capacity (Cu. in.) | Features | | Pryouts ends | Knockouts 1/2" bottom |
|--|-----------------------|----------|---------|-----------------|--------------------------|
| | | ears | bracket | | |
| 2-1/4" Deep — Gangable — 3" x 2" - For use with nonmetallic sheathed cable only | | | | | |
| CI775-L | 10.0 | flush | - | 4 | 1 |
| BC775-LD | 10.0 | flush | rework | 4 | 1 |
| BC777-LRB* | 11.0 | - | rework | 4 | 1 |
| 2-1/2" Deep — Gangable — 3" x 2" | | | | | |
| CI525-L | 12.5 | flush | rework | 4 | - |
| BC1104-L | 12.5 | flush | - | 4 | - |
| BC1104-LB | 12.5 | - | "B" | 4 | - |
| BC1104-LHT | 12.5 | - | P. Tabs | 4 | - |
| CI1104-LMS | 12.5 | - | "MS" | 4 | - |
| BC1104-LRB | 12.5 | flush | - | 4 | - |
| BC1104-LRW | 12.5 | flush | rework | 4 | - |
| BC1104-LSSX | 12.5 | - | "SSX" | 4 | - |
| BC1304-LHTQ | 14.5 | - | P. Tabs | 4 | - |

* Non gangable



Device Boxes

Armoured and Nonmetallic Sheathed Cable Clamps

IBERVILLE®



BC2104-LLE

Holding prongs and prepositioned depth tabs.



BC2304-LHTQ

One screw mounting. Provision for external nailing. Positioning tabs for 1/2" and 3/4" drywall.



BC2104-LX

Self-locking spring clamps. Holding prongs and pre-positioned depth tabs. Raised ground screws. **Approved for nonmetallic sheathed cable only.**



BC2104-LN

Staked nails. Holding prongs and prepositioned depth tabs.



BC2104-LRB

Flat sides for rework applications. 1 gang.



BC2104-LLE-2

2 gang. Holding prongs and prepositioned depth tabs.



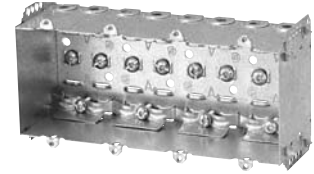
BC2104-LRB-2

Flat sides for rework applications. 2 gang.



BC2104-LLE-3

3 gang. Holding prongs and prepositioned depth tabs.



BC2104-LLE-4

4 gang. Holding prongs and prepositioned depth tabs.



BC2304-LHTQ-2

2 gang. Holding prongs and prepositioned depth tabs.



BC2304-LHTQ-3

3 gang. Holding prongs and prepositioned depth tabs.



BC2304-LHTQ-4

4 gang. Holding prongs and prepositioned depth tabs.

Technical Specifications

| Cat. No. | Width (in.) | Capacity (Cu. in.) | Features | | Pryouts ends |
|---|-------------|--------------------|----------|---------------|--------------|
| | | | ears | bracket | |
| 2-1/2" Deep — Non-Gangable — 3" High | | | | | |
| BC2104-LLE | 2 | 12.5 | - | P. Tabs | 4 |
| BC2104-LLE-2 | 3-3/4 | 25.0 | - | P. Tabs | 8 |
| BC2104-LLE-3 | 5-1/2 | 37.5 | - | P. Tabs | 12 |
| BC2104-LLE-4 | 7-3/8 | 50.0 | - | P. Tabs | 16 |
| BC2104-LN | 2 | 12.5 | - | P. Tabs/Nails | 4 |
| BC2104-LX | 2 | 12.5 | - | P. Tabs | 4 |
| BC2304-LHTQ | 2 | 14.5 | - | P. Tabs | 4 |
| BC2304-LHTQ-2 | 3-3/4 | 27.0 | - | P. Tabs | 8 |
| BC2304-LHTQ-3 | 5-1/2 | 39.5 | - | P. Tabs | 12 |
| BC2304-LHTQ-4 | 7-3/8 | 52.0 | - | P. Tabs | 16 |
| BC2104-LRB | 2 | 12.5 | - | P. Tabs | 4 |
| BC2104-LRB-2 | 3-3/4 | 25.0 | - | P. Tabs | 8 |



Device Boxes

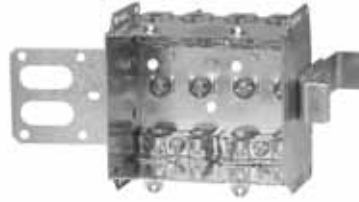
Armoured and Nonmetallic Sheathed Cable Clamps

IBERVILLE®



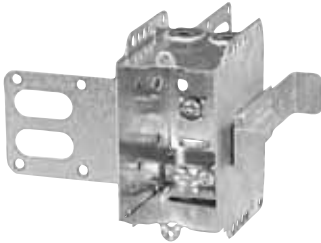
CI2104-LSSA1X-1

"Wraparound" bracket for 2-1/2" and 3-5/8" steel studs. With integral support bracket. **Brackets positioned for 2 layers of 1/2" drywall.**



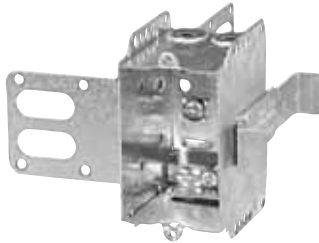
CI2104-LSSA2X-1

"Wraparound" bracket for 2-1/2" and 3-5/8" steel studs. With integral support bracket. **Brackets positioned for 2 layers of 1/2" drywall.**



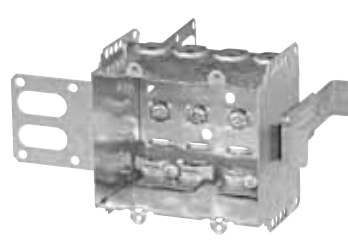
CI2104-LSSX

"Wraparound" bracket for 2-1/2" and 3-5/8" steel studs. With integral support bracket.



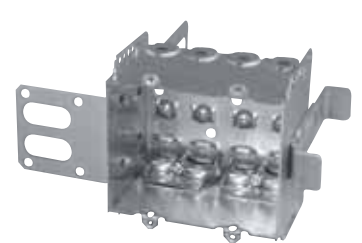
CI2104-LSS1X-1

"Wraparound" bracket for 2-1/2" and 3-5/8" steel studs. With integral support bracket. **Brackets positioned for 2 layers of 1/2" drywall.**



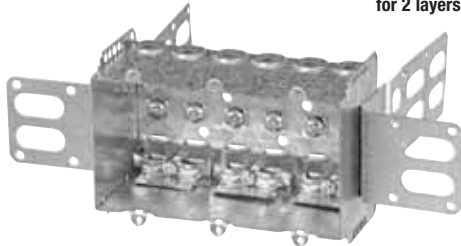
CI2104-LSS2X-1

"Wraparound" bracket for 2-1/2" and 3-5/8" steel studs. With integral support bracket. **Brackets positioned for 2 layers of 1/2" drywall.**



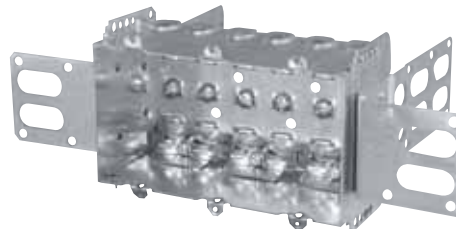
CI2104-LSS2X

"Wraparound" bracket for 2-1/2" and 3-5/8" steel studs. With integral support bracket.



CI2104-LSS3X-1

"Wraparound" brackets for 2-1/2" and 3-5/8" steel studs. With integral support bracket. **Brackets positioned for 2 layers of 1/2" drywall.**



CI2104-LSS3X

"Wraparound" brackets for 2-1/2" and 3-5/8" steel studs. With integral support bracket.



BC1504-LLE

Holding prongs and prepositioned depth tabs on one side.

Technical Specifications

| Cat. No. | Width (in.) | Capacity (Cu. in.) | Features | | Pryouts ends |
|---|-------------|--------------------|----------|---------|--------------|
| | | | ears | bracket | |
| 2-1/2" Deep — Non-Gangable — 3" High | | | | | |
| CI2104-LSSA1X-1 | 2 | 12.5 | - | "SSX" | 4 |
| CI2104-LSSA2X-1 | 3-3/4 | 25.0 | - | "SSX" | 8 |
| CI2104-LSSX | 2 | 12.5 | - | "SSX" | 4 |
| CI2104-LSS1X-1 | 2 | 12.5 | - | "SSX" | 4 |
| CI2104-LSS2X-1 | 3-3/4 | 25.0 | - | "SSX" | 8 |
| CI2104-LSS2X | 3-3/4 | 25.0 | - | "SSX" | 8 |
| CI2104-LSS3X-1 | 5-1/2 | 37.5 | - | "SSX" | 12 |
| CI2104-LSS3X | 5-1/2 | 37.5 | - | "SSX" | 12 |
| 2-1/2" Deep — Non-Gangable — 3" High | | | | | |
| BC1504-LLE | 2-1/4 | 15.0 | - | P. Tabs | 4 |



Device Boxes

Armoured and Nonmetallic Sheathed Cable Clamps

IBERVILLE®



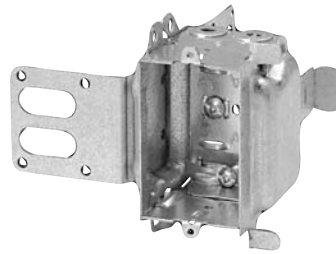
BC3104-LH

Positioning tabs. Provision for external nailing.



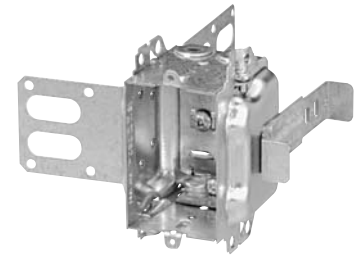
BC3104-LHTQ

One screw mounting. Provision for external nailing. Positioning tabs for 1/2" and 3/4" drywall.



BC3104-LSSX

"Wraparound" bracket for 2-1/2" and 3-5/8" steel studs. With integral support bracket.



CI3104-LSS1X-1

"Wraparound" bracket for 2-1/2" and 3-5/8" steel studs. With integral support bracket. Brackets positioned for 2 layers of 1/2" drywall.



CI1804-LH

Positioning tabs. External nailing. Mounting slots for internal screw installation. X-Cube adds 5.5 cu. in.



BC2004-LH

Provision for external nailing. Holding prongs and prepositioned depth tabs on one side.



BC2004-LHTQ

Internally embossed slots for screw mounting. Fixed positioning tabs for single 1/2" drywall along with retractable positioning tabs for double 1/2" drywall applications. Fixed positioning tabs for outside wall applications. Holding prongs. One screw mounting.



CI2016-LX

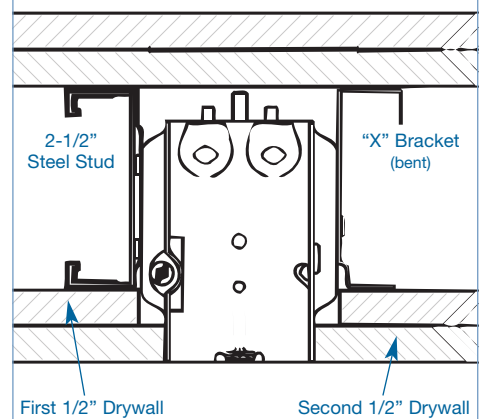
Self-locking spring clamps. Holding prongs and pre-positioned depth tabs on one side. **Approved for nonmetallic sheathed cable only.**

Technical Specifications

| Cat. No. | Capacity (Cu. in.) | Features | | Pryouts ends |
|--|-----------------------|----------|---------|-----------------|
| | | ears | bracket | |
| 2-1/2" Deep — Gangable — 3" x 2" | | | | |
| BC3104-LH | 16.0 | - | P. Tabs | 4 |
| BC3104-LHTQ | 16.0 | - | P. Tabs | 4 |
| BC3104-LSSX | 16.0 | - | "SSX" | 4 |
| CI3104-LSS1X-1 | 16.0 | - | "SSX" | 4 |
| CI1804-LH | 18.0 | - | P. Tabs | 4 |
| 2-3/4" Deep — Non-Gangable — 3-3/4" x 2-3/16" | | | | |
| BC2004-LH | 18.5 | - | P. Tabs | 4 |
| BC2004-LHTQ | 20.5 | - | P. Tabs | 4 |
| 2-1/2" Deep — Non-Gangable — 3-3/4" x 2" | | | | |
| CI2016-LX | 18.5 | - | P. Tabs | 4 |

CI3104-LSS1X-1

Top View



Device Boxes

Armoured and Nonmetallic Sheathed Cable Clamps

IBERVILLE®



BC1004-L

Flush ears.



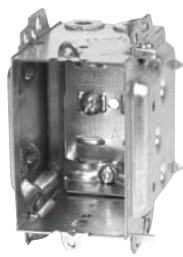
BC1004-LH

Positioning tabs. Provision for external nailing. Two embossed mounting slots for internal screw installation.



CI1004-LB

Side bracket wood stud



BC1018-LHTQ

One screw mounting provisions for external nailing.



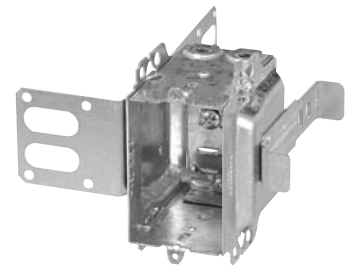
BC1304-LHT

Provision for external nailing.



BC3004-LH

Provision for external nailing.



CI3004-LSSX-1

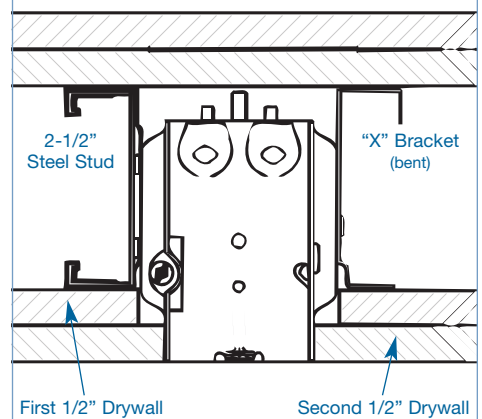
1" recessed brackets for 2-1/2" and 3-5/8" steel studs. Brackets positioned for 2 layers of 1/2" drywall.

Technical Specifications

| Cat. No. | Capacity (Cu. in.) | Features | | Pryouts ends |
|-------------------------------------|-----------------------|----------|---------|-----------------|
| | | ears | bracket | |
| 3" Deep — Gangable — 3" x 2" | | | | |
| BC1004-L | 15.0 | flush | - | 4 |
| BC1004-LH | 15.0 | - | P. Tabs | 4 |
| CI1004-LB | 16.0 | - | "B" | 4 |
| BC1018-LHTQ | 18.0 | - | P. Tabs | 4 |
| BC1304-LHT | 14.5 | - | P. Tabs | 4 |
| BC3004-LH | 18.0 | - | - | 4 |
| CI3004-LSSX | 18.0 | - | "SSX" | 4 |
| CI3004-LSSX-1 | 18.0 | - | "SSX" | 4 |

CI3004-LSSX-1

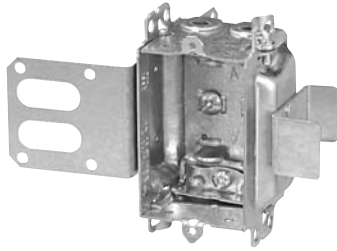
Top View



Device Boxes

Armoured and Nonmetallic Sheathed Cable Clamps

IBERVILLE®



CI3102-LSSAX

"Wraparound" bracket for 1-5/8" steel studs. With integral support bracket.



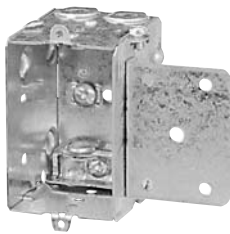
BC1104-LA

Flush ears.



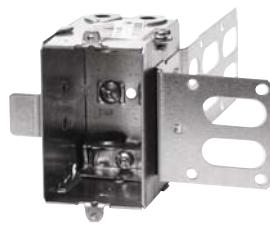
BC1104-LHA

Positioning tabs. Provision for external nailing. Two embossed mounting slots for internal screw installation.

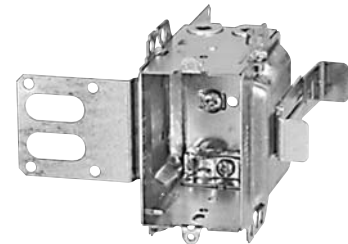


CI1104-LMSA

Mounting strap recessed 1/2".



BC1104-LSSAX



CI3004-LSSAX-1

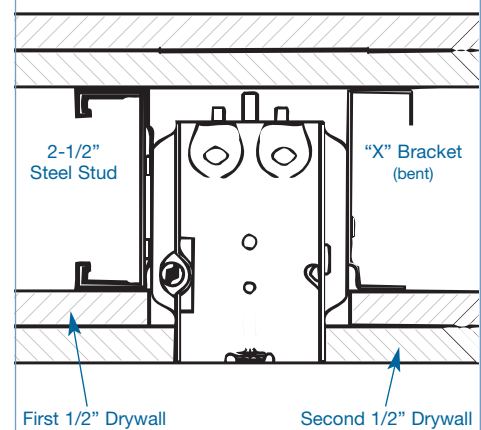
1" recessed brackets for 2-1/2" and 3-5/8" steel studs. Brackets positioned for 2 layers of 1/2" drywall.

Technical Specifications

| Cat. No. | Capacity (Cu. in.) | Features | | Pryouts ends |
|---|-----------------------|----------|---------|-----------------|
| | | ears | bracket | |
| 2" Deep — Gangable — 3" x 2" | | | | |
| CI3102-LSSAX | 12.0 | - | "SSX" | 4 |
| 2-1/2" Deep — Gangable — 3" x 2" | | | | |
| BC1104-LA | 12.5 | flush | - | 4 |
| BC1104-LHA | 12.5 | - | P. Tabs | 4 |
| CI1104-LMSA | 12.5 | - | "MS" | 4 |
| BC1104-LSSAX | 12.5 | - | "SSX" | 4 |
| 3" Deep — Gangable — 3" x 2" | | | | |
| CI3004-LSSAX-1 | 18.0 | - | "SSX" | 4 |

CI3004-LSSAX-1

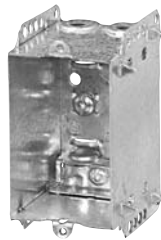
Top View



Device Boxes

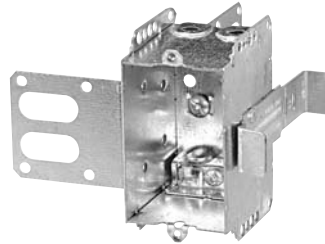
Armoured and Nonmetallic Sheathed Cable Clamps

IBERVILLE®



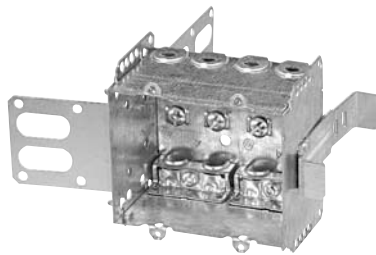
CI2104-LLEA

Holding prongs and prepositioned depth tabs.



CI2104-LSSAX

"Wraparound" bracket for 2-1/2" and 3-5/8" steel studs. With integral support bracket.



CI2104-LSSA-2X

2 gang. "Wraparound" bracket for 2-1/2" and 3-5/8" steel studs. With integral support bracket.



CI2104-LSSA-3X

3 gang. "Wraparound" bracket for 2-1/2" and 3-5/8" steel studs. With integral support bracket.

Technical Specifications

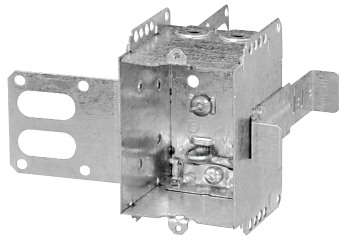
| Cat. No. | Width (in.) | Capacity (Cu. in.) | Features | | Pryouts ends |
|---|-------------|--------------------|----------|---------|--------------|
| | | | ears | bracket | |
| 2-1/2" Deep — Non-Gangable — 3" High | | | | | |
| CI2104-LLEA | 2 | 12.5 | - | P. Tabs | 4 |
| CI2104-LSSAX | 2 | 12.5 | - | "SSX" | 4 |
| CI2104-LSSA-2X | 3-3/4 | 25 | - | "SSX" | 8 |
| CI2104-LSSA-3X | 5-1/2 | 37.5 | - | "SSX" | 12 |



Device Boxes

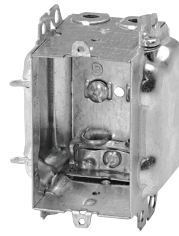
Armoured and Nonmetallic Sheathed Cable Clamps

IBERVILLE®



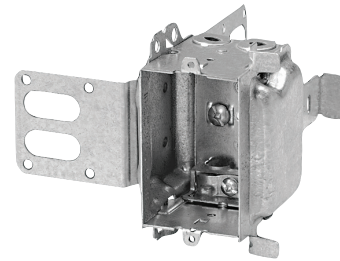
CI1504-LSSAX

"Wraparound" bracket for 2-1/2" and 3-5/8" steel studs. With integral support bracket.



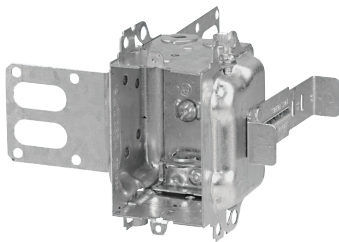
CI3104-LHA

Positioning tabs. Provision for external nailing.



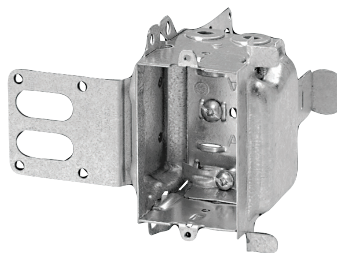
BC3104-LSSAX

"Wraparound" bracket for 2-1/2" and 3-5/8" steel studs. With integral support bracket.



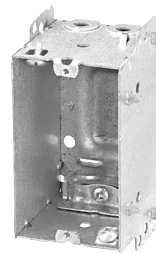
CI3104-LSSA1X-1

1" recessed brackets for 2-1/2" and 3-5/8" steel studs. Brackets positioned for 2 layers of 1/2" drywall.



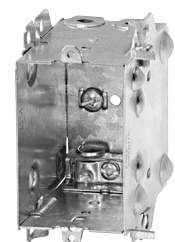
BC3104-LSSX

"Wraparound" bracket for 2-1/2" and 3-5/8" steel studs. With integral support bracket.



CI2004-LHA

Provision for external nailing. Holding prongs and pre-positioned depth tabs.



CI1004-LHA

Positioning tabs. Provision for external nailing. Two embossed mounting slots for internal screw installation.

Technical Specifications

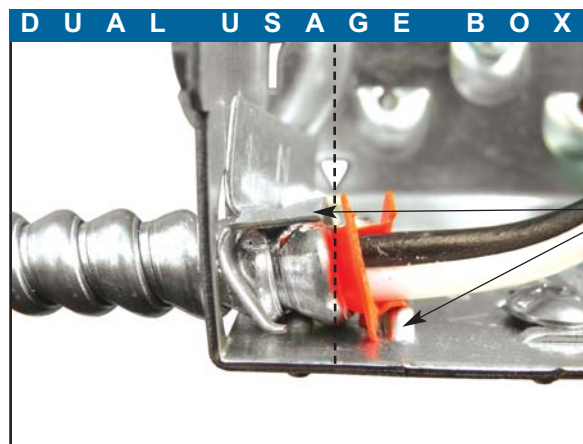
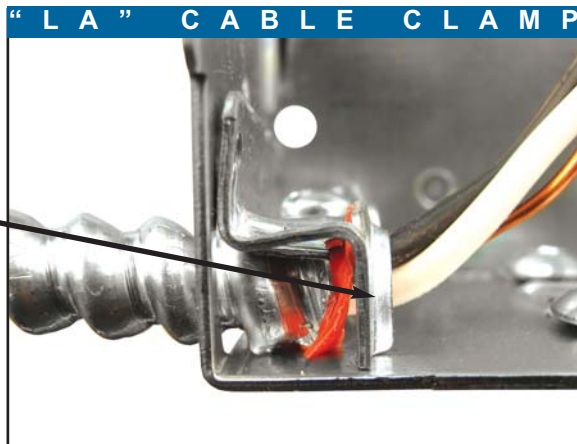
| Cat. No. | Capacity (Cu. in.) | Features | | Pryouts ends |
|--|-----------------------|----------|---------|-----------------|
| | | ears | bracket | |
| 2-1/2" Deep — Non-Gangable — 3" x 2-1/4" | | | | |
| CI1504-LSSAX | 15.0 | - | "SSX" | 4 |
| 2-1/2" Deep — Gangable — 3" x 2" | | | | |
| CI3104-LHA | 16.0 | - | P. Tabs | 4 |
| BC3104-LSSAX | 16.0 | - | "SSX" | 4 |
| CI3104-LSSA1X-1 | 16.0 | - | "SSX" | 4 |
| BC3104-LSSX | 16.0 | - | P. Tabs | 4 |
| 2-3/4" Deep — Non-Gangable — 3-3/4" x 2-3/16" | | | | |
| CI2004-LHA | 18.5 | - | P. Tabs | 4 |
| 3" Deep — Gangable — 3" x 2" | | | | |
| CI1004-LHA | 15.0 | - | P. Tabs | 4 |

Did you know...

When armoured cable (BX) is terminated in a device box, an anti-short bushing must be inserted between the conductors and the armour of the cable. Also, there must be a means of preventing the armour from entering into the box beyond the cable clamp.

Iberville® has two solutions that accomplish these tasks.

A Our "LA" cable clamp:
This clamp has been designed so that the anti-short bushing and the armour butt-up against a retaining wall built into the clamp.



B Our dual usage boxes feature retaining flanges built into the bottom of the spacer that in unison with the cable clamp, hold the anti-short bushing in place and prevent the armour from penetrating into the box.

Device Boxes

Stainless Steel Wall Plates

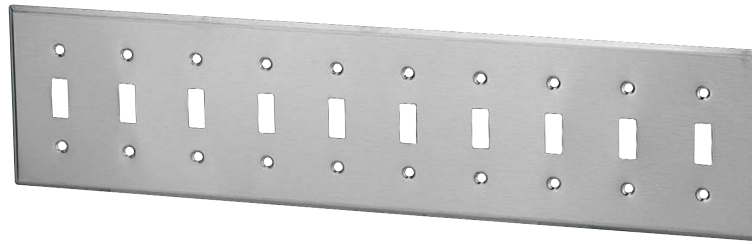
IBERVILLE®

General Usage

Toggle Switch



CI97071



CI97080

1 gang to 10 gangs

Duplex Receptacle



CI97101



CI97102

Blank Box Mounting (3.281")

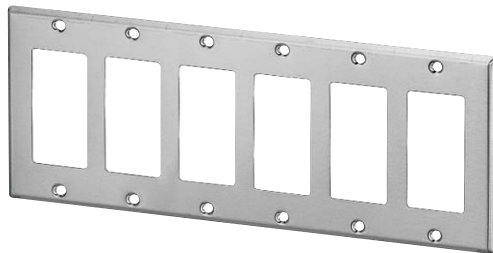


CI97011

GFCI / Decora



CI97401



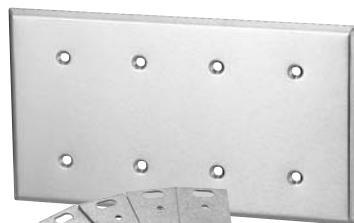
CI97406

1 gang to 6 gangs

Blank Device Mounting (2.375")



CI97121



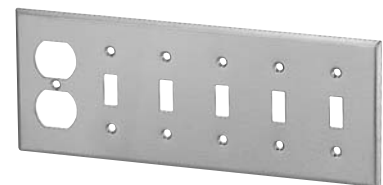
CI97124

1 gang to 4 gangs

Combination Switch / Receptacle



CI97532



CI97573

2 gangs to 7 gangs

Device Boxes

Stainless Steel Wall Plates

IBERVILLE®

Specialty Usage

* Telephone



* CI97181

3/8" opening.



* CI97191

5/8" opening.

Emergency



CI6851-RF

ON / OFF

Single Receptacle



CI97091

1-13/32" diameter.

GFCI Conversion Kit



BC97002

For 4" square boxes.

347 Volt Toggle

For 1204 Series



CI6851-HV



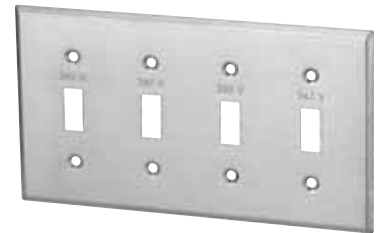
CI6854-HV

1 gang to 4 gangs

For MBD / MBS Series



CI6851-HV



CI97074-HVR

1 gang to 4 gangs

347 Volt Blank

For 1204 Series



CI97151-HV



CI97154-HV

1 gang, 2 gangs and 4 gangs

For MBD / MBS Series



CI97151-HV



CI97154-HVR

1 gang, 2 gangs and 4 gangs



* Not applicable.



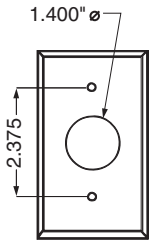
Device Boxes

Stainless Steel Wall Plates

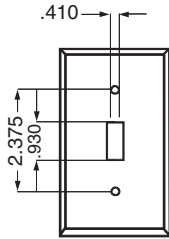
IBERVILLE®

Dimensions

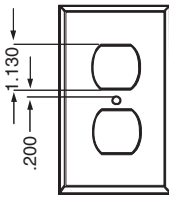
Standard Wall Plate



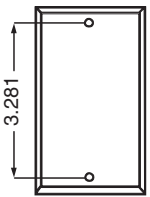
CI97091



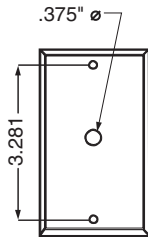
CI97071



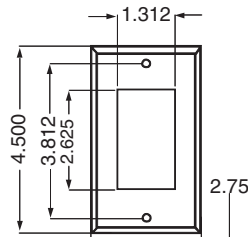
CI97101



CI97011

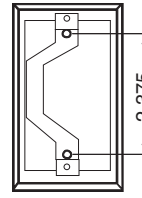


* CI97181

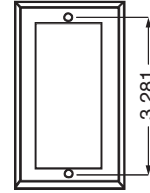


CI97401

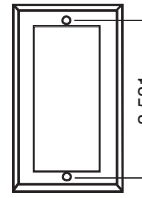
Mounting Hole Spacings



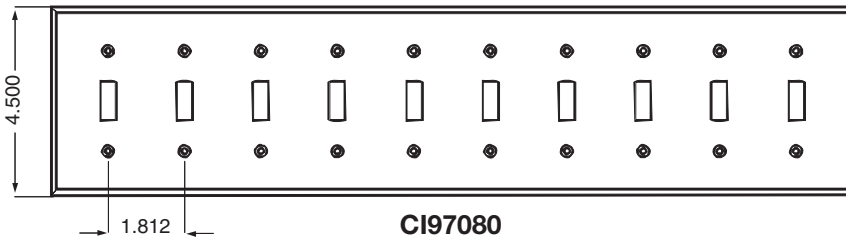
Device Mount



Box Mount

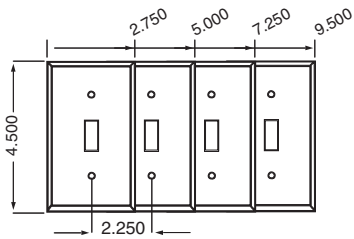


HV Box Mount

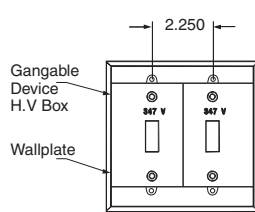


CI97080

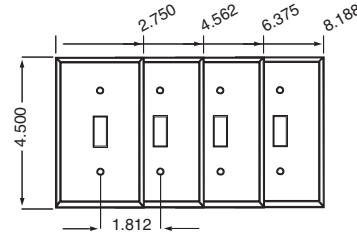
347 Volt Wall Plate



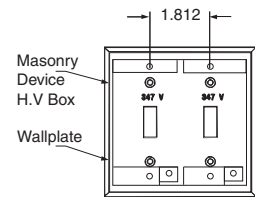
CI6851-HV to CI6854-HV



CI6852-HV



CI97072-HVR to CI97074-HVR



CI97072-HVR

Dimensions are in inches.

SP® * Not applicable.



Device Boxes

Stainless Steel Wall Plates

IBERVILLE®

Selection Guide

| DESCRIPTION | 1 GANG | 2 GANGS | 3 GANGS | 4 GANGS | 5 GANGS | 6 GANGS | 7 GANGS | 8 GANGS | 9 GANGS | 10 GANGS |
|---|-------------------|-------------|-------------|-------------|---------|---------|---------|---------|---------|----------|
| Toggle Switch† | CI97071 | CI97072 | CI97073 | CI97074 | CI97075 | CI97076 | | CI97078 | CI97079 | CI97080 |
| Duplex Receptacle† | CI97101 | CI97102 | | | | | | | | |
| Blank Boxes | | | | | | | | | | |
| Mounting 3.281"† | CI97011 | CI97012 | CI97013 | CI97014 | | | | | | |
| Blank Device | | | | | | | | | | |
| Mounting 2.375"† | CI97121 | CI97122 | CI97123 | CI97124 | | | | | | |
| GFCI / Decora† | CI97401 | CI97402 | CI97403 | CI97404 | CI97405 | CI97406 | | | | |
| GFCI Conversion Kit† | | BC97002 | | | | | | | | |
| Combination | | | | | | | | | | |
| Switch / Receptacle† | | CI97532 | | | CI97563 | CI97573 | | | | |
| 15 AMP Receptacle† | CI97091 | | | | | | | | | |
| Telephone 3/8" Opening | * CI97181 | | | | | | | | | |
| Telephone 5/8" Opening | * CI97191 | | | | | | | | | |
| Emergency On / Off† | CI6851-RF | | | | | | | | | |
| 347 Volt Toggle for 1204 Series | CI6851-HV | CI6852-HV | CI6853-HV | CI6854-HV | | | | | | |
| 347 Volt Blank for 1204 Series | CI97151-HV | CI97152-HV | | CI97154-HV | | | | | | |
| 347 Volt Toggle for MBD and MBS Series | USE CI6851-HV | CI97072-HVR | CI97073-HVR | CI97074-HVR | | | | | | |
| 347 Volt Blank for MBD and MBS Series | USE CI97151-HV | CI97152-HVR | | CI97154-HVR | | | | | | |

Technical Specifications

Type 430 Stainless Steel

- › 16% chrome.
- › Corrosion resistant.
- › Recommended for industrial, commercial and institutional applications.
- › Supplied with nickel plated brass screws.
- › 1 to 3 gang — Vertically Brushed.
- › 4 gang and up — Horizontally Brushed.

SP * Not applicable. † UL

4" Octagonal Boxes

Conduit Knockouts

IBERVILLE®



BCOBEX

Octagonal box extension.



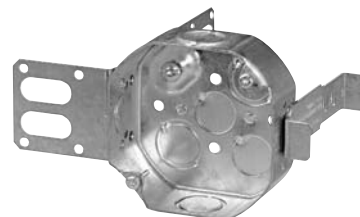
BC56111

Ceiling pan.



BC54151-K

Concentric knockouts.



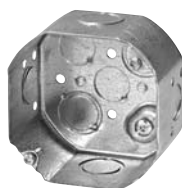
CI54151-KSSX

Concentric knockouts. "Wraparound" bracket for 2-1/2" and 3-5/8" steel studs. With integral support bracket.



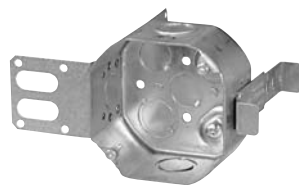
BC55151-K

Extension ring with ground screw. Concentric knockouts.



BC54171-K

Concentric knockouts.



CI54171-KSSX

Concentric knockouts. "Wraparound" bracket for 2-1/2" and 3-5/8" steel studs. With integral support bracket.



CI54171-KSSX-1

Mounting strap (offset for 2 x 1/2" drywall thicknesses).



CI55171-K

Extension ring with ground screw. Concentric knockouts.

Technical Specifications

| Cat. No. | Description | | | | | | |
|-------------------------------|--|----------|---------------------|------------|-------------|------------|-------------|
| 1/2" Deep — Extensions | | | | | | | |
| BCOBEX | Extension for octagonal boxes. 1/2" non-adjustable depth. Complete with mounting screws. (5 cu. in.) | | | | | | |
| Cat. No. | Capacity (Cu. in.) | Features | | Knockouts | | | |
| | | bracket | Raised Ground Screw | 1/2" sides | 1/2" bottom | 3/4" sides | 3/4" bottom |
| 1/2" Deep | | | | | | | |
| BC56111 | 5.0 | - | yes | - | 4 | - | - |
| 1-1/2" Deep | | | | | | | |
| BC54151-K | 15.0 | - | yes | 4 | 4 | 2 | 2 |
| CI54151-KSSX | 15.0 | "SSX" | yes | 2 | 4 | 2 | 2 |
| BC55151-K | 15.0 | - | no | 4 | - | 2 | - |
| 2-1/8" Deep | | | | | | | |
| BC54171-K | 21.0 | - | yes | 4 | 4 | 2 | 2 |
| CI54171-KSSX | 21.0 | "SSX" | yes | 2 | 4 | 2 | 2 |
| CI54171-KSSX-1 | 21.0 | "SSX-1" | yes | 2 | 4 | 2 | 2 |
| CI55171-K | 21.0 | - | no | 4 | - | 2 | - |

4" Octagonal Boxes

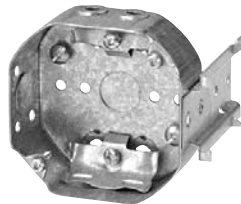
Nonmetallic Sheathed Cable Clamps

IBERVILLE®



BC54151-L

Prepositioned depth tabs recessed 1/2".



BC54151-LB

Side bracket, with holding prongs and prepositioned depth tabs.



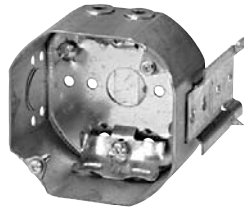
BC54151-LD

Swing-arm" rework brackets. Max. wall thickness: 3/4". Max. load capacity: 12 lb. (5.5 kg).



BC54171-L

Side bracket, with holding prongs.



BC54171-LB



CI54171-LF

Ceiling fan box. (Supplied with 2 #10-32 machine screws and star washers.) Max. load capacity: 35 lb. (15.6 kg).

Technical Specifications

| Cat. No. | Capacity (Cu. in.) | Features | | Knockouts | | Pryouts | |
|--------------------|-----------------------|----------|------------------------|------------|-------------|---------|--------|
| | | bracket | Raised Ground Screw | 1/2" sides | 1/2" bottom | sides | bottom |
| 1-1/2" Deep | | | | | | | |
| BC54151-L | 15.0 | - | no | 2 | 1 | 4 | 4 |
| BC54151-LB | 15.0 | "B" | no | 1 | 1 | 4 | 4 |
| BC54151-LD | 15.0 | rework | - | - | 1 | 4 | 4 |
| 2-1/8" Deep | | | | | | | |
| BC54171-L | 21.0 | - | - | 2 | 1 | 4 | 4 |
| BC54171-LB | 21.0 | "B" | - | 1 | 1 | 4 | 4 |
| CI54171-LF | 21.0 | - | no | 2 | 1 | 4 | 4 |

FOR USE WITH NONMETALLIC SHEATHED CABLE ONLY.

NOTE: CEC 2006 rule 30-302: 4) Where the weight of a luminaire does not exceed 23 kg (50 lbs), the luminaire shall be permitted to be supported by a ceiling outlet box attached directly to the building structure or by a ceiling outlet box attached to a bar hanger



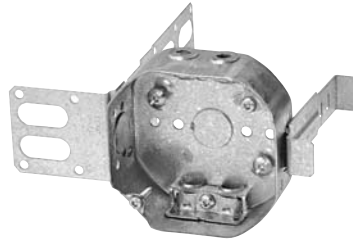
4" Octagonal Boxes

Armoured and Nonmetallic Sheathed Cable Clamps

IBERVILLE®



BC54151-LA

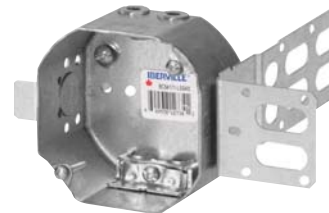


BC54151-LSSAX

"Wraparound" bracket for 2-1/2" and 3-5/8" steel studs. With integral support bracket.



BC54171-LA



BC54171-LSSAX

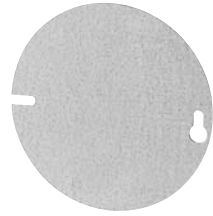
Technical Specifications

| Cat. No. | Capacity (Cu. in.) | Features | | Knockouts | | Pryouts | |
|----------------------|-----------------------|----------|------------------------|------------|-------------|---------|--------|
| | | bracket | Raised Ground Screw | 1/2" sides | 1/2" bottom | sides | bottom |
| 1-1/2" Deep | | | | | | | |
| BC54151-LA | 15.0 | - | - | 2 | 1 | 4 | - |
| BC54151-LSSAX | 15.0 | "SSX" | - | - | 1 | 4 | - |
| 2-1/8" Deep | | | | | | | |
| BC54171-LA | 21.0 | - | - | 2 | 1 | 4 - | - |
| BC54171-LSSAX | 21.0 | "SSX" | - | - | 1 | 4 | - |

4" Octagonal Boxes

Covers

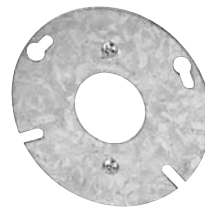
IBERVILLE®



BC54-C-1



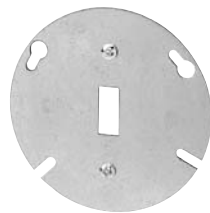
BC54-C-6



CI54-C-64



BC54-C-65



BC54-C-94



BC54-COV



BC54-COV-1

Technical Specifications

| Cat. No. | Description |
|---|---|
| 4" Round Covers | |
| BC54-C-1 | Flat blank. |
| BC54-C-6 | Flat with 1/2" conduit knockout. |
| CI54-C-64 | Flat for 1-13/32" diameter. 15 AMP. single receptacle. Device mounting screws included. |
| BC54-C-65 | Flat for duplex receptacle. Device mounting screw included. |
| BC54-C-94 | Flat for toggle switch. Device mounting screws included. |
| 5" Round Covers (White Enamel Paint) | |
| BC54-COV | Flat with 1/2" conduit knockout. Mounting screws included. |
| BC54-COV-1 | Flat blank. Mounting screws included. |



4" Square Boxes

Conduit Knockouts

IBERVILLE®



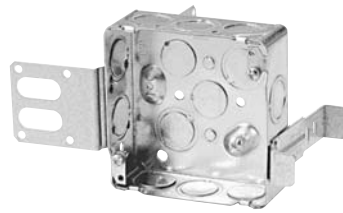
BC52151-K

Concentric knockouts.



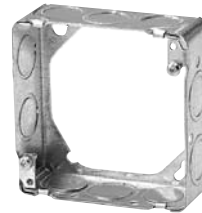
CI52151-KSB

Concentric knockouts.



BC52151-KSSX

Concentric knockouts. "Wraparound" bracket for 2-1/2" and 3-5/8" steel studs. With integral support bracket.



BC53151-K

Concentric knockouts.

Technical Specifications

| Cat. No. | Capacity (Cu. in.) | Features | | Knockouts | | | |
|---------------------|-----------------------|----------|------------------------|------------|-------------|------------|-------------|
| | | bracket | Raised Ground Screw | 1/2" sides | 1/2" bottom | 3/4" sides | 3/4" bottom |
| 1-1/2" Deep | | | | | | | |
| BC52151-K | 21.0 | - | yes | 10 | 4 | 6 | 2 |
| CI52151-KSB | 21.0 | "SB" | yes | 8 | 4 | 4 | 2 |
| BC52151-KSSX | 21.0 | "SSX" | yes | 7 | 4 | 3 | 2 |
| BC53151-K | 21.0 | - | - | 10 | - | 6 | - |

4" Square Boxes

Conduit Knockouts

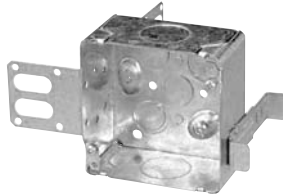
IBERVILLE®



BC52171-HV-KIT



BC52171-KSSXHVKIT



CI52171-1-SSX-1

"Wraparound" bracket for 2-1/2" and 3-5/8" steel studs. With integral support bracket. Present for 2 x 1/2" drywall thickness.



CI52171-1



BC52171-K

Concentric knockouts.



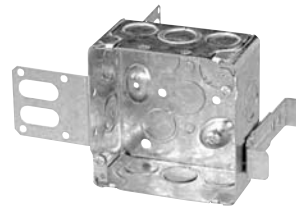
CI52171-KSB

Concentric knockouts.



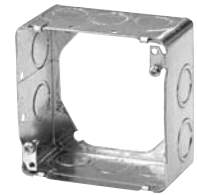
BC52171-KSSX

Concentric knockouts. "Wraparound" bracket for 2-1/2" and 3-5/8" steel studs. With integral support bracket. Present for 1 x 1/2" drywall thickness.



CI52171-KSSX-1

Concentric knockouts. "Wraparound" bracket for 2-1/2" and 3-5/8" steel studs. With integral support bracket. Present for 2 x 1/2" drywall thickness.



BC53171-K

Concentric knockouts.

Technical Specifications

| Cat. No. | Capacity (Cu. in.) | Features | | Knockouts | | | | |
|--------------------------|-----------------------|----------|------------------------|------------|-------------|------------|-------------|----------|
| | | bracket | Raised Ground Screw | 1/2" sides | 1/2" bottom | 3/4" sides | 3/4" bottom | 1" sides |
| 2-1/8" Deep | | | | | | | | |
| BC52171-HV-KIT | 33.6 | - | yes | 6 | - | 2 | - | - |
| BC52171-KSSXHVKIT | 33.6 | "SSX" | yes | 6 | - | 2 | - | - |
| CI52171-1 | 30.0 | - | yes | - | 4 | - | 2 | 4 |
| CI52171-1-SSX-1 | 30.0 | "SSX" | yes | - | 4 | - | 2 | 2 |
| BC52171-K | 30.0 | - | yes | 10 | 4 | 6 | 2 | - |
| CI52171-KSB | 30.0 | "SB" | yes | 8 | 4 | 4 | 2 | - |
| BC52171-KSSX | 30.0 | "SSX" | yes | 7 | 4 | 3 | 2 | - |
| CI52171-KSSX-1 | 30.0 | "SSX" | yes | 7 | 4 | 3 | 2 | - |
| BC53171-K | 30.0 | - | - | 10 | - | 6 | - | - |



4" Square Boxes

Covers

IBERVILLE®



BC52-C-1



BC52-C-6



CI52-C-3



BC52-C-0



CI52-C-10
to CI-52-C-62



BC52-C-00



BC52-C-17
to CI52-C-18-5/8

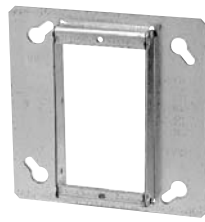
Technical Specifications

| Cat. No. | Description |
|-----------------------------|---|
| Flat Covers | |
| BC52-C-1 | Blank. |
| BC52-C-6 | 1/2" conduit knockout. |
| Plaster Ring Cover | |
| CI52-C-3 | Raised 1/2". (3.4 cu. in.) Tapped ears on 2-3/4" centers. |
| Single Device Covers | |
| BC52-C-0 | Flat. |
| CI52-C-10 | Raised 1/8". (1.0 cu. in.) |
| BC52-C-13 | Raised 1/2". (3.6 cu. in.) |
| CI52-C-14 | Raised 3/4". (5.7 cu. in.) |
| CI52-C-14-5/8 | Raised 5/8". (4.3 cu. in.) |
| CI52-C-15 | Raised 7/8". (6.8 cu. in.) |
| CI52-C-16 | Raised 1-1/4". (9.5 cu. in.) |
| CI52-C-62 | Raised 1/4". (1.8 cu. in.) |
| Two Device Covers | |
| BC52-C-00 | Flat. |
| BC52-C-17 | Raised 1/2". (6.2 cu. in.) |
| CI52-C-18 | Raised 3/4". (10.3 cu. in.) |
| CI52-C-18-5/8 | Raised 5/8". (8.3 cu. in.) |

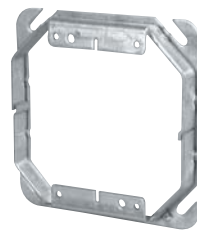
4" Square Boxes

Covers

IBERVILLE®



**BC52-C-49-1/2
to CI52-C-51-2**



**52-C-52-1/2
to 52-C-54-2**



52C-ADJ

Technical Specifications

| Cat. No. | Description |
|--|---|
| One Device Square Cornered Tile Covers | |
| BC52-C-49-1/2 | Raised 1/2". (3.4 cu. in.) |
| BC52-C-49-3/4 | Raised 3/4". (5.3 cu. in.) |
| BC52-C-49-5/8 | Raised 5/8". (4.0 cu. in.) |
| BC52-C-49-1 | Raised 1". (6.8 cu. in.) |
| CI52-C-49-1-1/4 | Raised 1-1/4". (8.6 cu. in.) |
| CI52-C-50-1-1/2 | Raised 1-1/2". (10.0 cu. in.) |
| CI52-C-51-2 | Raised 2". (14.0 cu. in.) |
| One Device Square Cornered Tile Covers - Adjustable | |
| 52C-ADJ | Adjustable from 1/2" to 1-1/2" raise (from 3.4 to 10.0 cu. in.) |
| Two Device Square Cornered Tile Covers | |
| 52-C-52-1/2 | Raised 1/2". (6.0 cu. in.) |
| 52-C-52-3/4 | Raised 3/4". (9.0 cu. in.) |
| 52-C-52-1 | Raised 1". (12.5 cu. in.) |
| 52-C-52-1-1/4 | Raised 1-1/4". (15.5 cu. in.) |
| 52-C-53-1-1/2 | Raised 1-1/2". (19.0 cu. in.) |
| 52-C-54-2 | Raised 2". (25.5 cu. in.) |



4" Square Boxes

Covers

IBERVILLE®



BC8361



BC8362



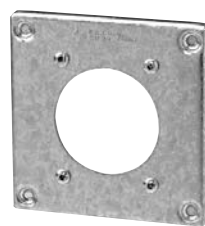
BC8363



BC8364



BC8365



BC8366



BC8367

Technical Specifications

| Cat. No. | Description |
|--|---|
| 3/8" Raised Surface Covers (4.6 cu. in.) Device Mount | |
| BC8361 | One toggle switch. |
| BC8362 | For 2-5/8" diameter 30 / 50 AMP. single receptacle. |
| BC8363 | For 1-13/32" diameter 15 AMP. single receptacle. |
| BC8364 | For 1-19/32" diameter 20 / 30 AMP. single locking receptacle. |
| BC8365 | One duplex receptacle. |
| BC8366 | For 2-9/64" diameter 30 AMP. single receptacle. |
| BC8367 | Two toggle switches. |

| NEMA Configuration | | | | | | | |
|--------------------|----|---------|------|------|-------|-----------|---------|
| Cover | A | V | Pole | Wire | Phase | Rec. Dia. | NEMA |
| BC8363 | 15 | 125 | 2 | 3 | 1 | 1.406 | 5-15R |
| BC8364 | 20 | 125 | 2 | 3 | 1 | 1.562 | L5-20R |
| BC8364 | 20 | 250 | 2 | 3 | 1 | 1.562 | L6-20-R |
| BC8364 | 20 | 347 | 2 | 3 | 1 | 1.562 | L24-20R |
| BC8364 | 20 | 600 | 2 | 3 | 1 | 1.562 | L9-20R |
| BC8364 | 20 | 125/250 | 3 | 3 | 1 | 1.562 | L10-20R |
| BC8364 | 20 | 250 | 3 | 3 | 3 | 1.562 | L11-20R |
| BC8364 | 20 | 125/250 | 3 | 4 | 3 | 1.562 | L14-20R |
| BC8366 | 30 | 125 | 2 | 3 | 1 | 2.109 | 5-30R |
| BC8364 | 30 | 125 | 2 | 3 | 1 | 1.562 | L5-30R |
| BC8366 | 30 | 250 | 2 | 3 | 1 | 2.109 | 6-30R |
| BC8364 | 30 | 250 | 2 | 3 | 1 | 1.562 | L6-30R |
| BC8362 | 30 | 125/250 | 3 | 4 | 3 | 2.647 | 14-30R |
| BC8362 | 50 | 125/250 | 3 | 4 | 1 | 2.647 | 14-50R |

Complete with device mounting screws.

4" Square Boxes

Covers

IBERVILLE®



BC8368



BC8371



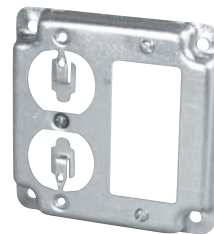
BC8375



BC8376



BC8377



BC8378



BC97002

Technical Specifications

| Cat. No. | Description |
|---|---|
| 3/8" Raised Surface Covers (4.6 cu. in.) | |
| BC8368 | 2 Decora/GFCI. |
| BC8371 | Two duplex receptacles. |
| BC8375 | One toggle switch, one duplex receptacle. |
| BC8376 | One Decora/GFCI. |
| BC8377 | One toggle switch, one Decora/GFCI. |
| BC8378 | One duplex receptacle, one Decora/GFCI. |
| GFCI Conversion Kits (Stainless Steel / Steel) | |
| BC97002 | To install GFCI on 4" square boxes. Complete with mounting screws. |

Complete with device mounting screws.

When extra capacity is required, the 8300 Series of 4" square covers can be mounted on a 72 Series of 4-11/16" square boxes using a CI72-A-52 adaptor. (see page 43)



4-1 1/16" Square Boxes

Conduit Knockouts

IBERVILLE®



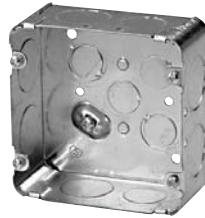
CI72151-K

Concentric knockouts.



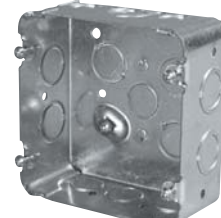
BC73151-K

Concentric knockouts.



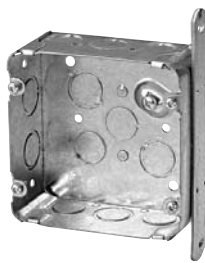
CI72171-1

1" knockouts.



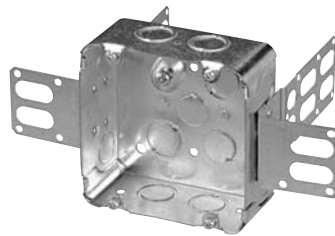
BC72171-K

Concentric knockouts.



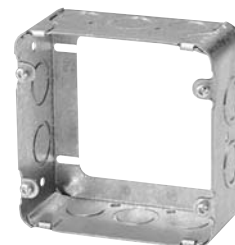
CI72171-KSB

Concentric knockouts.



CI72171-KSSX

Concentric knockouts / "Wraparound" brackets for 2-1/2" and 3-5/8" steel studs.



BC73171-K

Concentric knockouts.

Technical Specifications

| Cat. No. | Capacity (Cu. in.) | Features | | Knockouts | | | | |
|----------------------|-----------------------|----------|-----|------------|-------------|------------|-------------|----------|
| | | bracket | | 1/2" sides | 1/2" bottom | 3/4" sides | 3/4" bottom | 1" sides |
| 1-1/2" Deep | | | | | | | | |
| CI72151-K | 30.0 | - | yes | 10 | 4 | 6 | 2 | - |
| BC73151-K | 30.0 | - | - | 10 | - | 6 | - | - |
| 2-1/8" Deep | | | | | | | | |
| CI72171-1 | 42.0 | - | yes | - | 4 | 2 | 2 | 6 |
| BC72171-K | 42.0 | - | yes | 10 | 4 | 6 | 2 | - |
| CI72171-KSB | 42.0 | "SB" | yes | 8 | 4 | 2 | 2 | - |
| CI72171-KSSX | 42.0 | "SSX" | yes | 4 | 4 | 4 | 2 | - |
| CI72171-1-SSX | 42.0 | "SSX"- | - | - | 4 | 2 | 2 | 4 |
| BC73171-K | 42.0 | - | - | 10 | - | 6 | - | - |

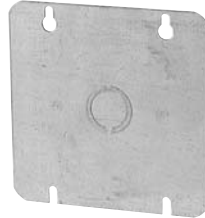
4-11/16" Square Boxes

Covers

IBERVILLE®



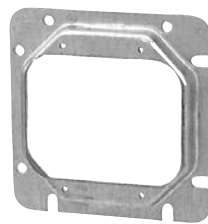
BC72-C-1



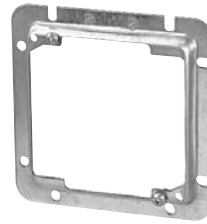
BC72-C-6



CI72-C-10
CI72-C-13
CI72-C-14



BC72-C-17



CI72-A-52

Technical Specifications

| Cat. No. | Description |
|-----------------------------|--|
| Flat Covers | |
| BC72-C-1 | Blank. |
| BC72-C-6 | With concentric 1/2" and 3/4" conduit knockout. |
| Single Device Covers | |
| CI72-C-10 | Raised 1/8". (1.7 cu. in.) |
| CI72-C-13 | Raised 1/2". (4.3 cu. in.) |
| CI72-C-14 | Raised 3/4". (6.2 cu. in.) |
| Two Device Covers | |
| BC72-C-17 | Raised 1/2". (6.4 cu. in.) |
| Adaptors | |
| CI72-A-52 | To install 4" square covers on 4-11/16" square boxes. Raised 1/4" (3.0 cu. in.). |



Utility Boxes and Covers

IBERVILLE®



CI2018



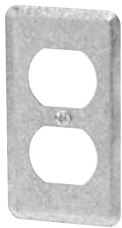
CI2018-SB



BC2020



BC2020-R



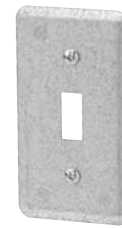
BC20-C-1



BC20-C-3



BC20-C-4



BC20-C-5

Technical Specifications

| Cat. No. | Capacity (Cu. in.) | Features | | Knockouts | | |
|----------------------------------|-----------------------|----------|------------------------|-----------|-------------|------------|
| | | bracket | Raised Ground Screw | 1/2" ends | 1/2" bottom | 1/2" sides |
| 1-1/2" Deep — 4" x 2-1/4" | | | | | | |
| CI2018 | 13.0 | - | no | 2 | 2 | 6 |
| CI2018-SB | 13.0 | "SB" | no | 2 | 2 | 3 |
| 1-7/8" Deep — 4" x 2-1/8" | | | | | | |
| BC2020 | 14.0 | - | yes | 2 | 2 | 6 |
| BC2020-R | 14.0 | - | - | 2 | - | 6 |

| Cat. No. | Description |
|---------------------------|--|
| Covers — 20 Series | |
| BC20-C-1 | For duplex receptacle. |
| BC20-C-3 | For 1-13/32" diameter 15 AMP. single receptacle. |
| BC20-C-4 | Blank. |
| BC20-C-5 | For toggle switch. |

NOTE:
BC2020-R can be installed on CI2018 / BC2020 series.
Covers: Device mounting screws included.



Utility Boxes

and Covers

IBERVILLE®



CI1141



BC1110



CI1110-SB



BC1110-LSKO



BC1110-SSX



BC1110-R



BC1151

BC1151: For toggle switch.



BC1199

BC1199: For duplex receptacle.



BC11-C-1



BC11-C-2



BC11-C-3



BC11-C-4



BC11-C-5



BC11-C-10



CI11-C-10-HV



BC11-C-4-HV



BC11-C-5-HV

Technical Specifications

| Cat. No. | Capacity (Cu. in.) | Features | | Knockouts | | |
|----------------------------------|-----------------------|---------------|---------------------|-----------|-------------|------------|
| | | Brackets | Raised Ground Screw | 1/2" ends | 1/2" bottom | 1/2" sides |
| 1-1/2" Deep – 4" x 2-1/4" | | | | | | |
| CI1141 | 13.0 | mounting lugs | no | 2 | 2 | 6 |
| 1-7/8" Deep – 4" x 2-3/8" | | | | | | |
| BC1110 | 16.5 | - | yes | 2 | 2 | 6 |
| CI1110-SB | 16.5 | "SB" | yes | 2 | 2 | 3 |
| BC1110-R | 16.5 | - | - | 2 | - | 6 |
| 2-1/8" Deep – 4" x 2-1/2" | | | | | | |
| BC1151 | 18.5 | - | no | 2 | 2 | - |
| BC1199 | 18.5 | - | no | 2 | 2 | - |
| 1-7/8" Deep – 4" x 2-3/8" | | | | | | |
| BC1110-LSKO | 16.5 | - | yes | 2 | 2 | - |
| BC1110-SSX | 16.5 | "SSX" | yes | 2 | 2 | - |

| Cat. No. | Description | Cat. No. | Description |
|---------------------------|--|--------------|--------------------------------|
| Covers – 11 Series | | | |
| BC11-C-1 | For duplex receptacle. | BC11-C-10 | Decora/GFCI. |
| BC11-C-2 | For 1-19/32" diameter 20 AMP. single locking receptacle. | CI11-C-10-HV | Decora 347 volt. |
| BC11-C-3 | For 1-13/32" diameter 15 AMP. single receptacle. | BC11-C-4-HV | Blank 347 volt. |
| BC11-C-4 | Blank. | BC11-C-5-HV | For toggle switch 347 volt. |
| BC11-C-5 | For toggle switch. | | |

NOTE:
Covers: Device mounting
screws included.



Concrete Rings

and Accessories

IBERVILLE®



BCCWB-18



(Shown with cover installed.)

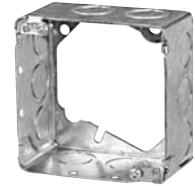
CI54521 / CI54561-1/2



CI54571



CI54581 / CI54591



CI53171-ER

Extension ring.
Mounts directly on concrete rings.



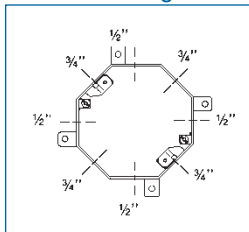
CI54560



CICBA

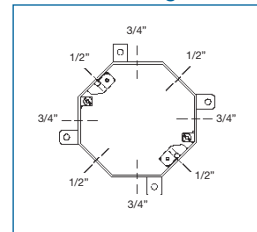
SKETCH A

Knockout Configuration



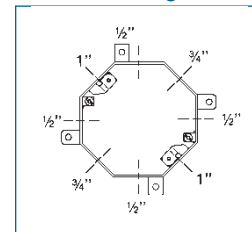
SKETCH B

Knockout Configuration



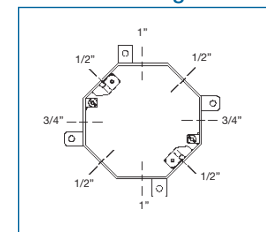
SKETCH C

Knockout Configuration



SKETCH D

Knockout Configuration



Technical Specifications

| Cat. No. | Volume (Cu. in.) | Dimensions H x W x D (inches) | Knockouts | | | Sketch |
|--------------------------------|---------------------|----------------------------------|------------|------------|----------|----------|
| | | | 1/2" sides | 3/4" sides | 1" sides | |
| Device Box for Concrete | | | | | | |
| BCCWB-18 | 18.0 | 3 x 2 x 2-1/2 | - | 4 | - | - |
| Concrete Rings | | | | | | |
| CI54521 | 18.0 | 4 x 4 x 1-1/2 | 4 | 4 | - | A |
| CI54531 | 24.0 | 4 x 4 x 2 | 4 | 4 | - | A |
| CI54541 | 30.0 | 4 x 4 x 2-1/2 | 4 | 4 | - | B |
| CI54551 | 36.0 | 4 x 4 x 3 | 4 | 4 | - | B |
| CI54561 | 42.0 | 4 x 4 x 3-1/2 | 4 | 4 | - | B |
| CI54561-1/2 | 42.0 | 4 x 4 x 3-1/2 | 8 | - | - | All 1/2" |
| CI54571 | 48.0 | 4 x 4 x 4 | 4 | 2 | 2 | C |
| CI54581 | 60.0 | 4 x 4 x 5 | 4 | 2 | 2 | D |
| CI54591 | 72.0 | 4 x 4 x 6 | 4 | 2 | 2 | D |
| Extension Rings | | | | | | |
| CI53171-ER | 30.0 | 4 x 4 x 2-1/8 | 10 | 6 | - | - |

NOTE: One CI54560 cover is supplied with each concrete ring.

| Cat. No. | Description |
|--------------------|---|
| Accessories | |
| CI54560 | Round cover with 5 - 1/2" knockouts. One cover supplied with each concrete ring. |
| CICBA | For quick mounting and alignment of octagonal extension ring (BC55151-K, CI55171-K) on concrete ring. |



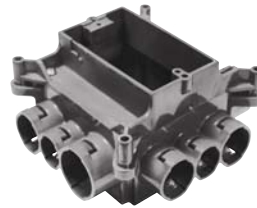
Concrete Rings Mud Boxes

Carlton®



A863CFG

Mud box with ceiling ring.



A863SG

Mud box with one-gang ring.



A863DG

Mud box with two-gang ring.



A863CFGF

Mud box assemblies with mounting feet.

Technical Specifications

| Cat. No. | Capacity (Cu. in.) | Features | Hub Sizes | | |
|-----------------------------------|-----------------------|---------------|-----------|------|----|
| | | | 1/2" | 3/4" | 1" |
| Concrete Rings / Mud Boxes | | | | | |
| A863CFG | 41.8 | | 4 | 6 | 2 |
| A863SG | 37.3 | | 4 | 6 | 2 |
| A863DG | 44.0 | | 4 | 6 | 2 |
| A863CFGF | 41.8 | Mounting Feet | 4 | 6 | 2 |
| A863CSGF | 37.3 | Mounting Feet | 4 | 6 | 2 |
| A863CDGF | 44.0 | Mounting Feet | 4 | 6 | 2 |
| Reducers | | | | | |
| A273DE | 3/4" to 1/2" | | | | |
| A273EF | 1" to 3/4" | | | | |

Carlton Mud Box Assemblies w/Mounting Feet are specifically engineered and designed for use in Tunnel Form applications. The mounting feet are located on all four corners and allow the box to attach directly to the wall of the form using pop rivets. The pop rivets help keep the box in position during the pour and provide a safe, secure, and rust resistant mount.

See our Carlton® catalogue for a full range of ENT accessoires.

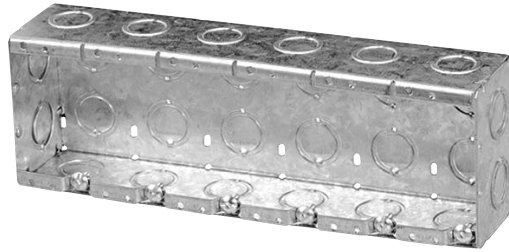


Masonry Boxes and Accessories

IBERVILLE®



CIMBS-1-K



CIMBS-6-K



CIMBS-P

1 gang to 6 gangs



BCMBD-1-K



CIMBD-6-K



CIMBD-P

1 gang to 6 gangs

Technical Specifications

| Cat. No. | Volume (Cu. in.) | Number of Gangs | Width (inches) | 1/2" and 3/4" Concentric Knockouts | | | 1/2", 3/4" and 1" Concentric KOs (ends) |
|----------------------------------|---------------------|--------------------|-------------------|------------------------------------|--------|------|--|
| | | | | sides | bottom | ends | |
| 2-1/2" Deep x 3-3/4" High | | | | | | | |
| CIMBS-1-K | 14.0 | 1 | 2 | 4 | 2 | 2 | - |
| CIMBS-2-K | 28.0 | 2 | 3-25/32 | 4 | 4 | 4 | - |
| CIMBS-3-K | 42.0 | 3 | 5-19/32 | 4 | 6 | 6 | - |
| CIMBS-4-K | 56.0 | 4 | 7-13/32 | 4 | 8 | 8 | - |
| CIMBS-5-K | 70.0 | 5 | 9-7/32 | 4 | 10 | 10 | - |
| CIMBS-6-K | 84.0 | 6 | 11-1/32 | 4 | 12 | 12 | - |
| 3-1/2" Deep x 3-3/4" High | | | | | | | |
| BCMBD-1-K | 21.0 | 1 | 2 | 8 | 2 | 3 | 1 |
| CIMBD-2-K | 42.0 | 2 | 3-25/32 | 8 | 4 | 6 | 2 |
| CIMBD-3-K | 63.0 | 3 | 5-19/32 | 8 | 6 | 9 | 3 |
| CIMBD-4-K | 84.0 | 4 | 7-13/32 | 8 | 8 | 12 | 4 |
| CIMBD-5-K | 105.0 | 5 | 9-7/32 | 8 | 10 | 15 | - |
| CIMBD-6-K | 126.0 | 6 | 11-1/32 | 8 | 12 | 18 | - |

NOTE: On multi-gang boxes, lateral spacing between mounting holes is 1-13/16".

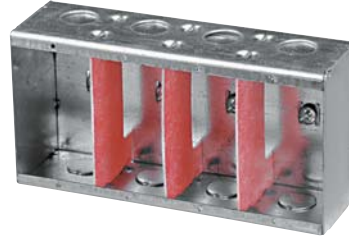
| Cat. No. | Description |
|--------------------|--|
| Accessories | |
| CIMBS-P | Steel partition for MBS 2-1/2" deep masonry boxes. |
| CIMBD-P | Steel partition for MBD 2-1/2" deep masonry boxes. |

In accordance with C.E.C. 2006 Edition, Rule 12-3030, a partition must be used when conductors in a multi-gang box are connected to different sources of voltage.



347 Volt Boxes

IBERVILLE®



CIMBS-1-HV

CIMBS-4-HV

1 gang to 4 gangs



CIMBD-1-HV

CIMBD-4-HV

1 gang to 4 gangs

Technical Specifications

| Cat. No. | Volume (Cu. in.) | Number of Gangs | Width | Knockouts |
|------------------------------|---------------------|--------------------|----------|-----------|
| | | | (Inches) | 1/2" ends |
| 2-3/8" Deep x 4" High | | | | |
| CIMBS-1-HV | 20.25 | 1 | 2-1/4 | 2 |
| CIMBS-2-HV | 20.25 / gang | 2 | 4-1/16 | 4 |
| CIMBS-3-HV | 20.25 / gang | 3 | 5-7/8 | 6 |
| CIMBS-4-HV | 20.25 / gang | 4 | 7-11/16 | 8 |
| 3-3/8" Deep x 4" High | | | | |
| CIMBD-1-HV | 22.5 | 1 | 2-1/4 | 4 |
| CIMBD-2-HV | 22.5 / gang | 2 | 4-1/16 | 8 |
| CIMBD-3-HV | 22.5 / gang | 3 | 5-7/8 | 12 |
| CIMBD-4-HV | 22.5 / gang | 4 | 7-11/16 | 16 |

NOTE: All HV boxes have tapped holes spaced 3-17/32" to accommodate 347 Volt switches.
Standard lateral spacing 1-13/16", on pre-ganged boxes.
Pre-ganged boxes include fibre partitions.

Partitions Only

CIMBS-HV-PART

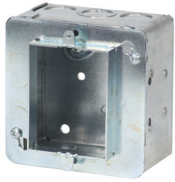
CIMBD-HV-PART



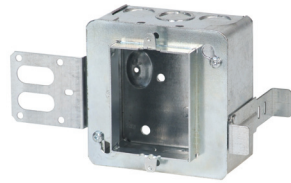
347 Volt Boxes

Boxes and Kits

IBERVILLE®



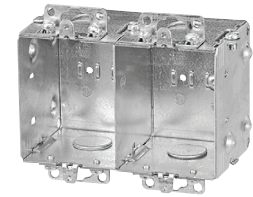
BC52171-HV-KIT



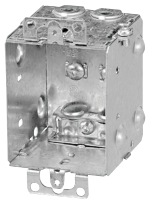
BC52171-KSSXHVKIT



CI1204-1-HV



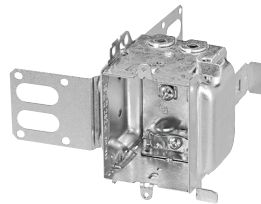
CI1204-2-HV



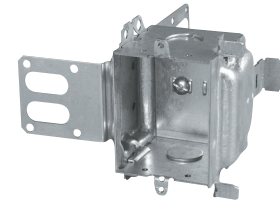
CI1204-LA-HV



CI1204-3/4-SSX-HV



CI1204-LSSAX-HV



CI1204-SSX-HV

Technical Specifications

| Cat. No. | Volume (Cu. in.) | Number of Gangs | Dimensions H x W x D (inches) | Features | | | Knockouts 1/2" ends | Pryouts ends |
|-------------------------------|---------------------|--------------------|----------------------------------|----------|--------|----------|------------------------|-----------------|
| | | | | ears | clamps | brackets | | |
| 2-1/2" Deep — Gangable | | | | | | | | |
| BC52171-HV-KIT | 33,6 | 1 | 4 x 4 x 2-1/8 | - | - | - | 2 | - |
| BC52171-KSSXHVKIT | 33,6 | 1 | 4 x 4 x 2-1/8 | - | - | - | 2 | - |
| CI1204-1-HV | 16,0 | 1 | 3 x 2-1/4 x 2-1/2 | recessed | - | - | 2 | - |
| CI1204-2-HV | 32,0 | 2 | 3 x 4-1/2 x 2-1/2 | recessed | - | - | 4 | - |
| CI1204-3/4-SSX-HV | 16,0 | 1 | 3 x 2 x 2-1/2 | - | - | "SSX" | - | - |
| CI1204-LA-HV | 16,0 | 1 | 3 x 2-1/4 x 2-1/2 | flush | BX | - | - | 4 |
| CI1204-LSSAX-HV | 16,0 | 1 | 3 x 2-1/4 x 2-1/2 | - | BX | "SSX" | - | 4 |
| CI1204-SSX-HV | 16,0 | 1 | 3 x 2-1/4 x 2-1/2 | - | - | "SSX" | 2 | - |
| CI1204-SS1X-HV | 16,0 | 1 | 3 x 2-1/4 x 2-1/2 | - | - | "SSX" | 2 | - |
| CI1204-LSSAX-HV-1 | 16,0 | 1 | 3 x 2-1/4 x 2-1/2 | - | BX | "SSX" | - | 4 |

NOTE: All HV boxes have tapped holes spaced 3-17/32" to accommodate 347 Volt switches.
 CI1204-2-HV includes CIHVP partition.
 On multigang boxes lateral spacing 2-1/4".
 When ganged, CIHVP partition must be installed between spacers.

347 Volt Boxes

Covers

IBERVILLE®



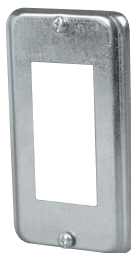
CI1110-HV



BC11-C-4-HV



BC11-C-5-HV



CI11-C-10-HV



CIFS-1G-1/2-HV
CIFS-1G-3/4-HV

Includes stamped aluminum "FS" cover.



CIFS-9-HV

Technical Specifications

| Cat. No. | Volume (Cu. in.) | Number of Gangs | Features | Dimensions | Knockouts |
|---|---------------------|--------------------|---------------------|---------------------|-------------|
| | | | Raised Ground Screw | H x W x D (inches) | 1/2" ends |
| 1-7/8" Deep | | | | | |
| CI1110-HV | 16.5 | 1 | yes | 4 x 2-3/8 x 1-7/8 | 2 |
| 347 Volt "FS" Box Kits — 1-7/8" Deep (Cast Aluminum) | | | | | |
| CIFS-1G-1/2-HV | 14.0 | 1 | yes | 6 x 2-13/16 x 1-7/8 | 1 x 1/2 hub |
| CIFS-1G-3/4-HV | 14.0 | 1 | yes | 6 x 2-13/16 x 1-7/8 | 1 x 3/4 hub |

NOTE: All HV boxes have tapped holes spaced 3-17/32" to accommodate 347 Volt switches.

| Cat. No. | Description |
|------------------------------------|--------------------|
| 347 Volt Utility Box Covers | |
| BC11-C-4-HV | Blank. |
| BC11-C-5-HV | One toggle switch. |
| CI11-C-10-HV | Decora. |

| Cat. No. | Description |
|---|--------------------|
| 347 Volt "FS" Cover (Stamped Aluminum) | |
| CIFS-9-HV | One toggle switch. |

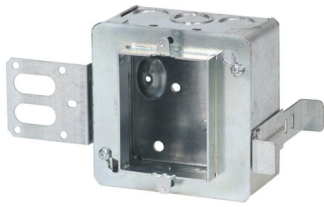
Mounting screws included.



347 Volt Boxes

Covers and accessories

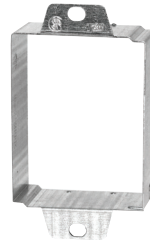
IBERVILLE®



BC52171-KSSXHVKIT



CIHVP



CISBEX-HV



CI6851-HV



CI6852-HV



CI6853-HV



CI6854-HV

Technical Specifications

| Cat. No. | Description |
|---|---|
| 347 Volt Stainless Steel Wall Plates (for CI1204-HV Boxes) | |
| BC52171-KSSXHVKIT | 4 in. Square 347V Kit. Steel stud applications. |
| CI6851-HV | Single 347 Volt toggle switch. |
| CI6852-HV | Two 347 Volt toggle switches. |
| CI6853-HV | Three 347 Volt toggle switches. |
| CI6854-HV | Four 347 Volt toggle switches. |

NOTE: Device mounting screws included.
Lateral spacing 2-1/4" on **CI6852-HV** / **CI6853-HV** / **CI6854-HV**.

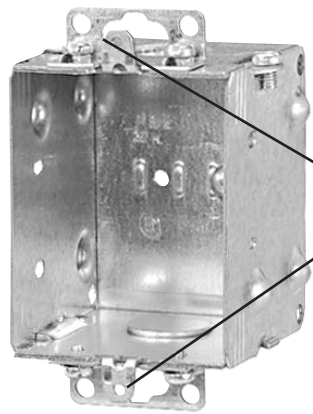
| Cat. No. | Description |
|---------------------------------------|--|
| 347 Volts Partitions (Steel) | |
| CIHVP | High voltage partition to be used with 347 Volt boxes (CI1204 series) when ganged. |
| 347 Volts Device Box Extension | |
| CISBEX-HV | 2" X 3" 347 Volt – Maximum adjustable depth – 1-7/8" – Complete with mounting screws |



347 Volt Boxes

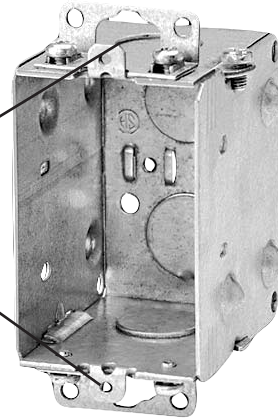
IBERVILLE®

HV (347 VOLT) vs Regular Box Spacing



3.531"
C to C

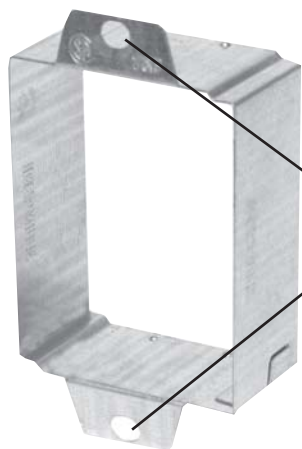
CI1204-1-HV



3.281"
C to C

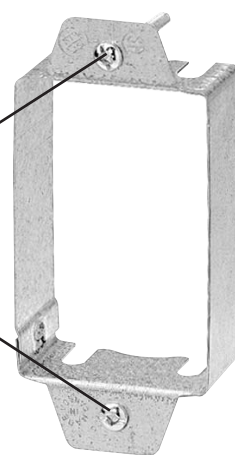
BC1104

Extension Rings



3.531"
C to C

CISBEX-HV



3.281"
C to C

CISBEX

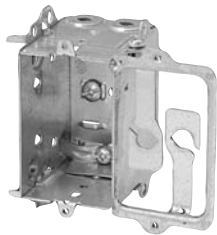
CSA Rule C22.2 No. 18.1 1-04 paragraph 9.8



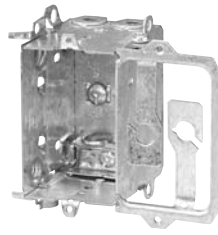
Power / Communication

Boxes

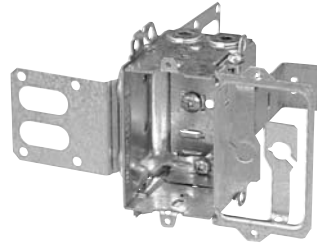
IBERVILLE®



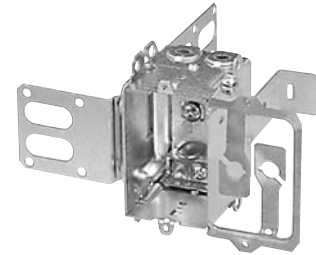
BC4104-L



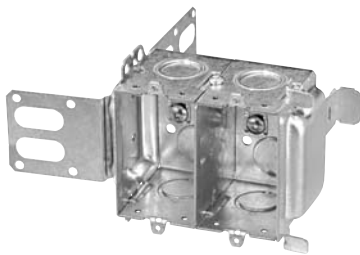
CI4104-LA



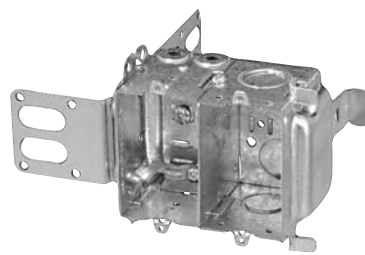
CI4304-LSSX



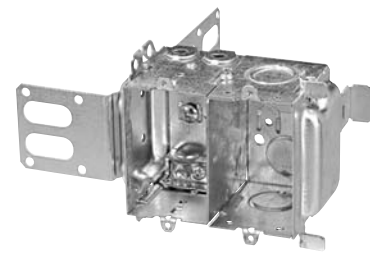
CI4304-LSSAX



CI4204-KSSX



CI4204-LSSX



CI4204-LSSAX

Technical Specifications

| Cat. No. | Capacity (Cu. in.) | Features | | Knockouts | | | Pryouts ends |
|---|-----------------------|-----------|---------|-----------|-------------|-----------|-----------------|
| | | clamps | bracket | 1/2" ends | 1/2" bottom | 3/4" ends | |
| 2-1/2" Deep — Gangable — 3" x 2" | | | | | | | |
| BC4104-L | 12.5 | BX/Loomex | - | - | - | - | 4 |
| CI4104-LA | 12.5 | BX/Loomex | - | - | - | - | 4 |
| CI4304-LSSX | 12.5 | BX/Loomex | "SSX" | - | - | - | 4 |
| CI4304-LSSAX | 12.5 | BX/Loomex | "SSX" | - | - | - | 4 |
| 2-1/2" Deep — Gangable — 3" x 4" | | | | | | | |
| CI4204-KSSX | 12.5 / gang | - | "SSX" | 4 | 4 | 4 | - |
| CI4204-LSSX | 12.5 / gang | BX/Loomex | "SSX" | 2 | 2 | 2 | 4 |
| CI4204-LSSAX | 12.5 / gang | BX/Loomex | "SSX" | 2 | 2 | 2 | 4 |
| CI4204-LSSAX-1 | 12.5 / gang | BX/Loomex | "SSX" | 2 | 2 | 2 | 4 |

NOTE: 4104, 4304 Series consist of a 2-1/2" deep device box with a 90° folded side incorporating mounting holes for communication outlet and wire holders. The 4104 Series is intended for installation on wood studs, while the 4304 Series is intended for installation on 2-1/2" or 3-5/8" steel studs. The installation is completed with a standard 2 gang wall plate.

4204 Series, intended for commercial or industrial installation on 2-1/2" or 3-5/8" steel studs, consists of a 2-1/2" deep device box (with or without cable clamps), pre-ganged with a concentric knockout box for communication outlet and separated by a steel partition. These boxes may also be used for power / power applications. The installation is completed with a standard 2 gang wall plate.

In accordance with C.E.C. 2006 Edition, Rule 12-3030, a partition must be used when conductors in a multi-gang box are connected to different sources of voltage.





* CIMB-1



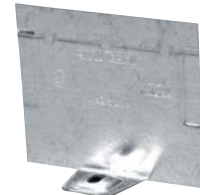
* WBF-1



CI1004-P



CI1104-P



CI2104-P

Technical Specifications

| Cat. No. | Description |
|--------------------------------------|---|
| Low Voltage Mounting Brackets | |
| CIMB-1 * | Mounting brackets that provides quick installation of low voltage class 2 communication outlets. Raised 1/2". Positioning tabs ensure straight installation. Low voltage wall bracket. |
| WBF-1 * | |
| Device Box Partitions | |
| CI1004-P | Steel partitions for 2", 2-1/2" and 3" deep outlet boxes. Steel partitions for 2-1/2" deep gangable boxes. May be used with all 1104 and 3104 series of boxes. Steel partitions for 2" and 2-1/2" deep outlet boxes. |
| CI1104-P† | |
| CI2104-P | |
| | |

†NOTE: Install partition while ganging boxes.

In accordance with C.E.C. 2006 Edition, Rule 12-3030, a partition must be used when conductors in a multi-gang box are connected to different sources of voltage.

See page 67 for additional class 2 brackets

Pre-Ganged Boxes

Accessories and covers

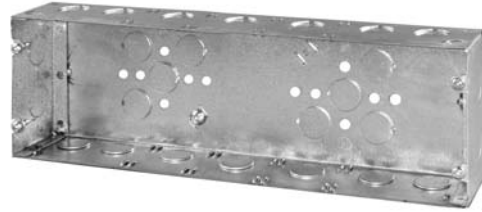
IBERVILLE®



CIGSB-2



CILVP



CIGSB-6



CIGBC-2



CIGBC-6

Technical Specifications

| Cat. No. | Volume (Cu. in.) | Number of Gangs | Width (inches) | 1/2" Knockouts | | | Accepts CI |
|---|---------------------|--------------------------------------|-------------------|----------------|--------|-----------------|---------------|
| | | | | ends | bottom | sides | |
| Pre-Ganged Boxes — 2" Deep x 4" High | | | | | | | |
| CIGSB-2 | 52.0 | 2 | 7 | 8 | 4 | 4 | GBC-2 or 3 |
| CIGSB-3 | 66.0 | 3 | 8-13/16 | 10 | 4 | 4 | GBC-3 or 4 |
| CIGSB-4 | 80.0 | 4 | 10-5/8 | 12 | 8 | 4 | GBC-4 or 5 |
| CIGSB-5 | 93.0 | 5 | 12-7/8 | 14 | 8 | 4 | GBC-5 or 6 |
| CIGSB-6 | 107.0 | 6 | 14-1/4 | 16 | 8 | 4 | GBC-6 |
| 3/4" Raised Covers | | Dimensions H x W x D (inches) | | | | Use with | |
| CIGBC-2 | 11.0 | 2 | 4 x 7 x 3/4 | - | - | - | GSB-2 |
| CIGBC-3 | 16.0 | 3 | 4 x 8-13/16 x 3/4 | - | - | - | GSB-2 or 3 |
| CIGBC-4 | 21.0 | 4 | 4 x 10-5/8 x 3/4 | - | - | - | GSB-3 or 4 |
| CIGBC-5 | 27.0 | 5 | 4 x 12-7/8 x 3/4 | - | - | - | GSB-4 or 5 |
| CIGBC-6 | 32.0 | 6 | 4 x 14-1/4 x 3/4 | - | - | - | GSB-5 or 6 |

NOTE: All CIGBC covers have tapped holes spaced to accommodate standard switches and receptacles. Lateral spacing 1-13/16".

| Cat. No. | Description |
|---------------------------------------|---|
| Low Voltage Partitions (Steel) | |
| CILVP | Steel low voltage partition for use with CIGSB boxes, when conductors are connected to different sources. |

In accordance with C.E.C. 2006 Edition, Rule 12-3030, a partition must be used when conductors in a multi-gang box are connected to different sources of voltage.

Extension Rings

Conduit Knockouts

IBERVILLE®



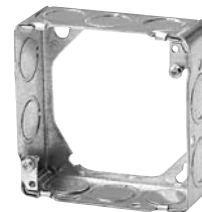
BC55151-K



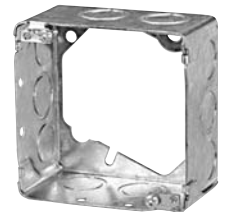
CI55171-K



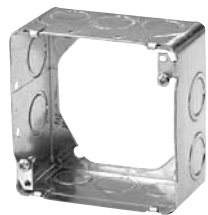
BCOBEX



BC53151-K



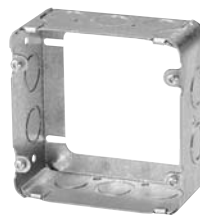
CI53171-ER



BC53171-K



BC73151-K



BC73171-K



BC1110-R



BC2020-R

Technical Specifications

| Cat. No. | Volume (Cu. in.) | Dimensions H x W x D (inches) | Knockouts | | |
|------------------------|---------------------|----------------------------------|------------|------------|----------|
| | | | 1/2" sides | 3/4" sides | 1" sides |
| 4" Octagonal | | | | | |
| BC55151-K | 15.0 | 4 x 4 x 1-1/2 | 4 | 2 | - |
| CI55171-K | 21.0 | 4 x 4 x 2-1/8 | 4 | 2 | - |
| 4" Round | | | | | |
| BCOBEX | 5.0 | 4 x 4 x 1/2 | - | - | - |
| 4" Square | | | | | |
| BC53151-K | 21.0 | 4 x 4 x 1-1/2 | 10 | 6 | - |
| BC53171-K | 30.0 | 4 x 4 x 2-1/8 | 10 | 6 | - |
| 4-11/16" Square | | | | | |
| BC73151-K | 30.0 | 4-11/16 x 4-11/16 x 1-1/2 | 10 | 6 | - |
| BC73171-K | 42.0 | 4-11/16 x 4-11/16 x 2-1/8 | 10 | 6 | - |
| Utility | | | | | |
| BC1110-R | 16.5 | 4 x 2-3/8 x 1-7/8 | 6 | - | - |
| BC2020-R | 14.0 | 4 x 2-1/8 x 1-7/8 | 6 | - | - |
| Concrete | | | | | |
| CI53171-ER | 30.0 | 4 x 4 x 2-1/8 | 10 | 6 | - |



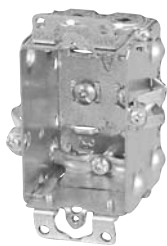
Rework Boxes

IBERVILLE®



CI425

"Screwlok" brackets for rework installation.
Max. wall thickness: 5/8"



CI425-L

"Screwlok" brackets for rework installation.
Max. wall thickness: 5/8"



CI525-L

"Screwlok" brackets for rework installation.
Max. wall thickness: 5/8"



BC775-LD

"Swing-Arm" rework brackets. Max. wall thickness: 3/4"



BC777-LRB

Pivoting ends for rework installation. Non-gangable. Max. wall thickness: 1-1/8"



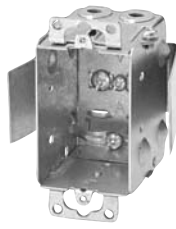
BC1004-LRB

Flat sides for rework applications.



BC1104-LRB

Flat sides for rework applications.



BC1104-LRW

Rework bracket for closed wall applications.
Max. wall thickness: 1"



BC2104-LRB

Flat sides for rework applications. 1 gang.



BC2104-LRB-2

Flat sides for rework applications. 2 gang.



BC54151-LD

"Swing-Arm" rework brackets.
Max. wall thickness: 3/4"
Maximum load capacity: 12 lb. (5.5 kg)

Technical Specifications

| Cat. No. | Volume (Cu. in.) | Dimensions H x W x D (inches) | Features clamps | Knockouts | | Pryouts | | |
|------------------------|---------------------|----------------------------------|--------------------|-----------|--------|---------|-------|--------|
| | | | | ends | bottom | ends | sides | bottom |
| Device Boxes | | | | | | | | |
| CI425 | 10.0 | 3 x 2 x 2 | - | 2 | 1 | - | - | - |
| CI425-L | 10.0 | 3 x 2 x 2 | loomex/BX | - | - | 4 | - | - |
| CI525-L | 12.5 | 3 x 2 x 2-1/2 | loomex/BX | - | - | 4 | - | - |
| BC775-LD | 10.0 | 3 x 2 x 2-1/4 | loomex | - | 1 | 4 | - | - |
| BC777-LRB | 11.0 | 3 x 2 x 2-1/4 | loomex | - | 1 | 4 | - | - |
| BC1004-LRB | 15.0 | 3 x 2 x 3 | loomex/BX | - | 1 | 4 | - | - |
| BC1104-LRB | 12.5 | 3 x 2 x 2-1/2 | loomex/BX | - | - | 4 | - | - |
| BC1104-LRW | 12.5 | 3 x 2 x 2-1/2 | loomex/BX | - | - | 4 | - | - |
| BC2104-LRB | 12.5 | 3 x 2 x 2-1/2 | loomex/BX | - | - | 8 | - | - |
| BC2104-LRB-2 | 25.0 | 3 x 4 x 2-1/2 | loomex/BX | - | - | 16 | - | - |
| Octagonal Boxes | | | | | | | | |
| BC54151-LD | 15.0 | 4 x 4 x 1-1/2 | loomex/BX | - | 1 | - | 4 | 4 |

Rework Applications

CI-820DX Mounting Instructions

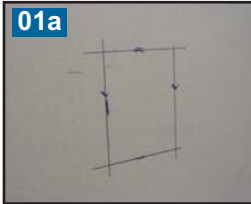
IBERVILLE®

Device Box Supports:

CI820-DX

CI820-DX is suitable for all device boxes incorporating mounting ears.

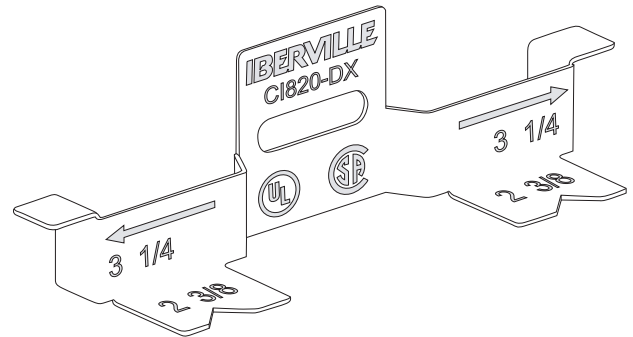
01 After determining the location for the device, trace a 2-5/16" by 3-1/4" pattern on the drywall and carefully cut out the pattern keeping within the confines of the lines.



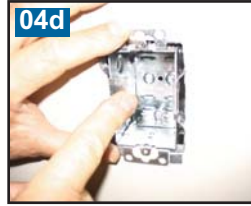
02 Pull the cables through the opening and secure them to the outlet box.



03 Snap one CI820-DX into place on each side of the opening.



04 Push the outlet box into the opening ensuring that the mounting ears are flush to the drywall and do not piggyback onto the flanges of the CI820-DX. Bend the protrusions over the sides of the box and crimp into place. (It is recommended that pliers be used to ensure a strong hold on the box.)



05 Proceed to wire the device using approved wiring procedures.



06 The box is secured in place.

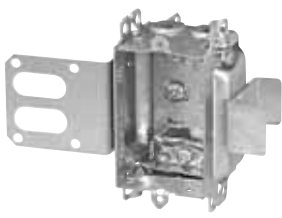


Package of
150 units

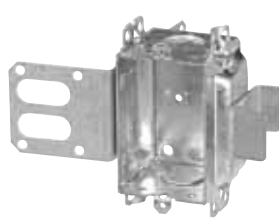
Steel Stud Boxes

Device Boxes

IBERVILLE®



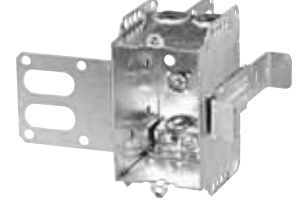
CI3102-LSSAX



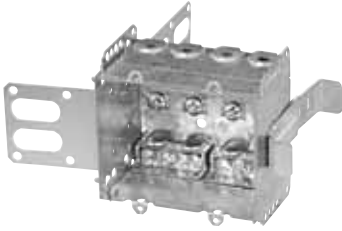
CI3102-SSX



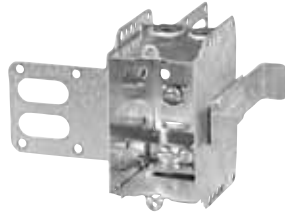
CI1204-3/4-SSX-HV



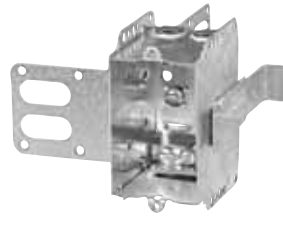
CI2104-LSSAX



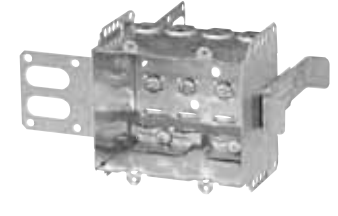
CI2104-LSSA-2X



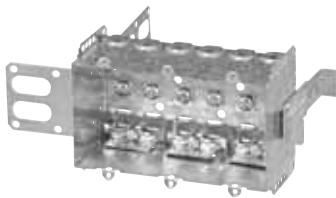
CI2104-LSSX



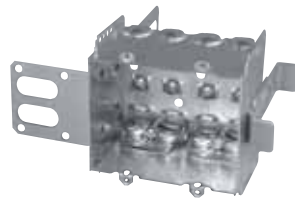
CI2104-LSS1X-1



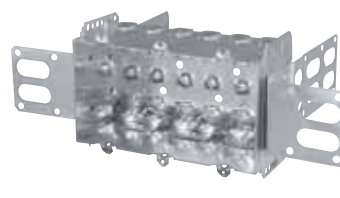
CI2104-LSS2X-1



CI2104-LSS3X-1



CI2104-LSS-2X



CI2104-LSS-3X



CISSX-6

Technical Specifications

| Cat. No. | Capacity (Cu. in.) | Width (in.) | Features clamps | Knockouts | | | Pryouts ends |
|--|-----------------------|----------------|--------------------|-----------|-------------|-----------|-----------------|
| | | | | 1/2" ends | 1/2" bottom | 3/4" ends | |
| Device Boxes — 2" Deep — Gangable — 3" High | | | | | | | |
| CI3102-LSSAX | 12.0 | 2 | loomex/BX | - | - | - | 4 |
| CI3102-SSX | 12.0 | 2 | - | 2 | - | - | - |
| Device Boxes — 2-1/2" Deep — Pre-Ganged — 3" High | | | | | | | |
| CI1204-3/4-SSX-HV | 16.0 | 2 | - | - | - | 2 | - |
| CI2104-LSSAX | 12.5 | 2 | loomex/BX | - | - | - | 4 |
| CI2104-LSSA-2X | 25.0 | 3-3/4 | loomex/BX | - | - | - | 8 |
| CI2104-LSSA-3X | 37.5 | 5-1/2 | loomex/BX | - | - | - | 12 |
| CI2104-LSSX | 12.5 | 2 | loomex/BX | - | - | - | 4 |
| CI2104-LSS1X-1 | 12.5 | 2 | loomex/BX | - | - | - | 4 |
| CI2104-LSS2X-1 | 25.0 | 3-3/4 | loomex/BX | - | - | - | 8 |
| CI2104-LSS3X-1 | 37.5 | 5-1/2 | loomex/BX | - | - | - | 12 |
| CI2104-LSS2X | 25.0 | 3-3/4 | loomex/BX | - | - | - | 8 |
| CI2104-LSS3X | 37.5 | 5-1/2 | loomex/BX | - | - | - | 12 |

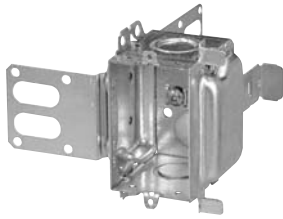
| Cat. No. | Description |
|-------------------------|--|
| Support Brackets | |
| CISSX-6 | Support bracket extension for 6" metal stud. |



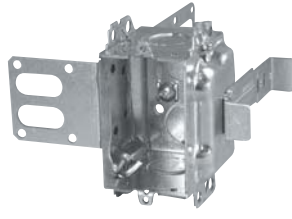
Steel Stud Boxes

Device Boxes

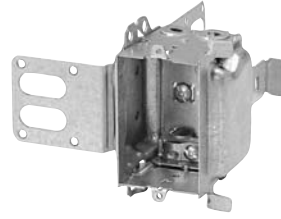
IBERVILLE®



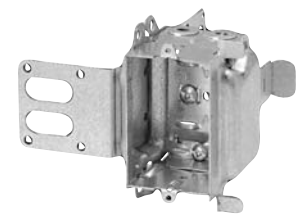
CI3104-KSSX



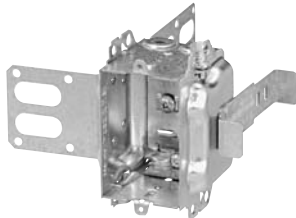
BC3104-KSS1X-1



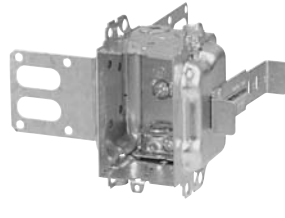
BC3104-LSSAX



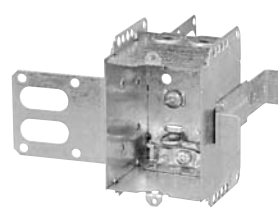
BC3104-LSSX



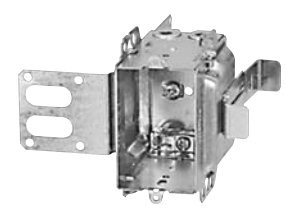
CI3104-LSS1X-1



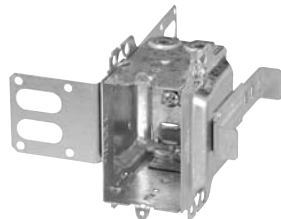
CI3104-LSSA1X-1



CI1504-LSSAX



CI3004-LSSAX-1



CI3004-LSSX-1



CISSX-6

Technical Specifications

| Cat. No. | Volume (Cu. in.) | Features clamps | Knockouts | | | Pryouts ends |
|--|---------------------|--------------------|-----------|-------------|-----------|-----------------|
| | | | 1/2" ends | 1/2" bottom | 3/4" ends | |
| Device Boxes — 2-1/2" Deep — Gangable — 3" x 2" | | | | | | |
| CI3104-KSSX | 16.0 | - | 2 | 2 | 2 | - |
| BC3104-KSS1X-1 | 16.0 | - | 2 | 2 | 2 | - |
| BC3104-LSSAX | 16.0 | loomex/BX | - | - | - | 4 |
| BC3104-LSSX | 16.0 | loomex/BX | - | - | - | 4 |
| CI3104-LSS1X-1 | 16.0 | loomex/BX | - | - | - | 4 |
| CI3104-LSSA1X-1 | 16.0 | loomex/BX | - | - | - | 4 |
| CI3104-SSX | 16.0 | - | 2 | 2 | - | - |
| Device Boxes — 2-1/2" Deep — Non-Gangable — 3" x 2" | | | | | | |
| CI1504-LSSAX | 15.0 | loomex/BX | - | - | - | 4 |
| Device Boxes — 3" Deep — Gangable — 3" x 2" | | | | | | |
| CI3004-LSSAX-1 | 18.0 | loomex/BX | - | - | - | 4 |
| CI3004-LSSX | 18.0 | loomex/BX | - | - | - | 4 |
| CI3004-LSSX-1 | 18.0 | loomex/BX | - | - | - | 4 |

| Cat. No. | Description |
|-------------------------|--|
| Support Brackets | |
| CISSX-6 | Support bracket extension for 6" metal stud. |



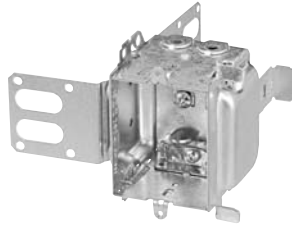
Steel Stud Boxes

347 Volt Boxes and Power Communication Boxes

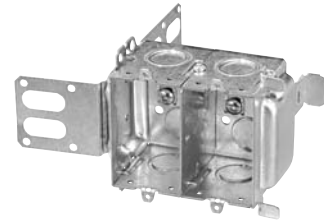
IBERVILLE®



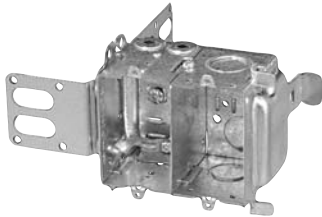
CI1204-3/4-SSX-HV



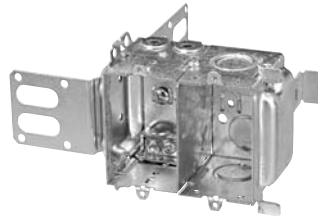
CI1204-LSSAX-HV



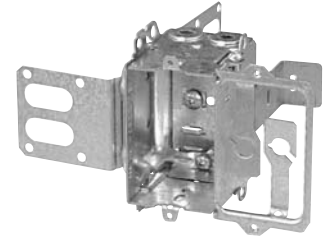
CI4204-KSSX



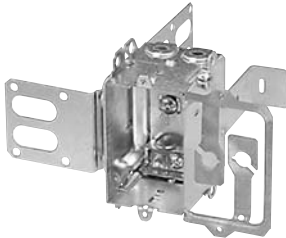
CI4204-LSSX



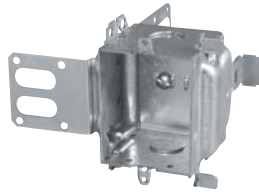
CI4204-LSSAX



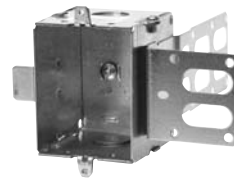
CI4304-LSSX



CI4304-LSSAX



CI1204-SSX-HV



CI1204-SS1X-HV



CISSX-6

Technical Specifications

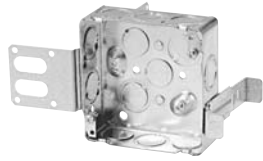
| Cat. No. | Volume (Cu. in.) | Features clamps | Knockouts | | | Pryouts ends |
|--|---------------------|--------------------|-----------|-------------|-----------|-----------------|
| | | | 1/2" ends | 1/2" bottom | 3/4" ends | |
| 347 Volt Boxes — 2-1/2" Deep — Gangable — 3" x 2-1/4" | | | | | | |
| CI1204-SSX-HV | 16.0 | loomex/BX | 2 | - | - | - |
| CI1204-3/4-SSX-HV | 16.0 | loomex/BX | - | - | 2 | - |
| CI1204-LSSAX-HV | 16.0 | loomex/BX | - | - | - | 4 |
| CI1204-SS1X-HV | 16.0 | loomex/BX | 2 | - | - | - |
| Power / Communication Boxes — 2-1/2" Deep — Pre-Ganged — 3" x 2" / gang | | | | | | |
| CI4204-KSSX | 12.5 / gang | - | 4 | 4 | 4 | - |
| CI4204-LSSX | 12.5 / gang | loomex/BX | 2 | 2 | 2 | 4 |
| CI4204-LSSAX | 12.5 / gang | loomex/BX | 2 | 2 | 2 | 4 |
| CI4204-LSSAX-1 | 12.5 / gang | loomex/BX | 2 | 2 | 2 | 4 |
| CI4304-LSSX | 12.5 / gang | loomex/BX | - | - | - | 4 |
| CI4304-LSSAX | 12.5 / gang | loomex/BX | - | - | - | 4 |

| Cat. No. | Description |
|-------------------------|--|
| Support Brackets | |
| CISSX-6 | Support bracket extension for 6" metal stud. |

Steel Stud Boxes

4" and 4-11/16" Square Boxes and 4" Octagonal Boxes

IBERVILLE®



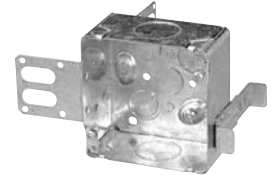
BC52151-KSSX



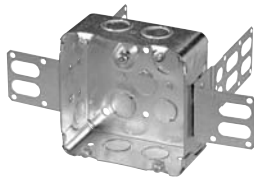
BC52171-KSSX



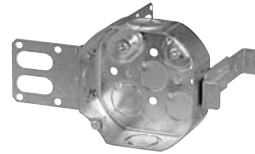
CI52171-KSSX-1



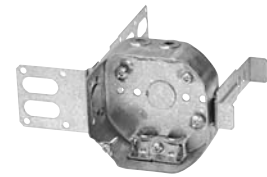
CI52171-1-SSX-1



CI72171-KSSX



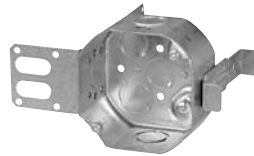
CI54151-KSSX



BC54151-LSSAX



BC1110-SSX



CI54171-KSSX



CI54171-KSSX-1



BC52171-KSSXHVKIT

Technical Specifications

| Cat. No. | Volume (Cu. in.) | Features | | Knockouts | | | | | Pryouts sides |
|--|---------------------|-----------|------------------------|------------|-------------|------------|-------------|----------|------------------|
| | | Clamps | Raised Ground Screw | 1/2" sides | 1/2" bottom | 3/4" sides | 3/4" bottom | 1" sides | |
| 4" Square Boxes – 1-1/2" Deep | | | | | | | | | |
| BC52151-KSSX | 21.0 | - | yes | 7 | 4 | 3 | 2 | - | - |
| 4" Square Boxes – 2-1/8" Deep | | | | | | | | | |
| BC52171-KSSX | 30.0 | - | yes | 7 | 4 | 3 | 2 | - | - |
| CI52171-KSSX-1 | 30.0 | - | yes | 7 | 4 | 3 | 2 | - | - |
| CI52171-1-SSX-1 | 30.0 | - | yes | - | 4 | - | 2 | 2 | - |
| 4-11/16" Square Boxes – 2-1/8" Deep | | | | | | | | | |
| CI72171-KSSX | 42.0 | - | yes | 8 | 4 | 4 | 2 | - | - |
| 4" Octagonal Boxes – 1-1/2" Deep | | | | | | | | | |
| CI54151-KSSX | 15.0 | - | yes | 2 | 4 | 2 | 2 | - | - |
| BC54151-LSSAX | 15.0 | loomex/BX | - | - | 1 | - | - | - | 4 |
| 4" Octagonal Boxes – 2-1/8" Deep | | | | | | | | | |
| CI54171-KSSX | 21.0 | - | yes | 2 | 4 | 2 | 2 | - | - |
| CI54171-KSSX-1 | 21.0 | - | yes | 2 | 4 | 2 | 2 | - | - |
| 4" Square – 2-1/8" Deep | | | | | | | | | |
| BC52171-KSSXHVKIT | 33.6 | - | yes | 6 | - | 2 | - | - | - |

| Cat. No. | Capacity (Cu. in.) | Features | | Knockouts | | |
|--------------------------------------|-----------------------|----------|---------------------|-----------|-------------|------------|
| | | Brackets | Raised Ground Screw | 1/2" ends | 1/2" bottom | 1/2" sides |
| 4" Square Boxes – 1-1/2" Deep | | | | | | |
| BC1110-SSX | 16.5 | "SSX" | yes | 7 | 4 | 3 |



Bar Hangers

and Brackets

IBERVILLE®

Technical Specifications



BC1041 / BC1042

Features 6010 / 6011 Series

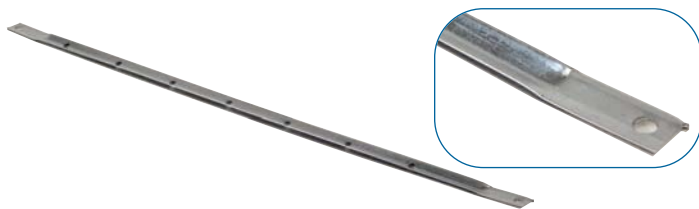
- Claws provide temporary support for proper positioning until permanently installed.
- Accurate and automatic positioning on joist.
- End plate locator tab is scored and marked for lath and plaster drywall applications with standard and deep boxes.
- Foot straightened gauges for 1-1/2" deep box with cover or 2-1/8" deep box without cover. With foot broken off gauges for shallow pan box.



6010-DW-25 / 6011-DW-25

6010-ADW-25 / 6011-ADW-25

| Cat. No. | Description |
|---|---|
| Bar Hangers | |
| BC1041 | Adjustable from 11-1/2" to 18-1/2". Maximum load capacity: 50 lb. (22.7). |
| BC1042 | Adjustable from 16-1/2" to 26-1/2". When extended up to 22-1/2" 50 lb. (22.7). When extended up to 26-1/2" 25 lb. (11.35). |
| Adjustable Bar Hangers for Plaster and Drywall — Depth 1-3/16" | |
| 6010-DW-25 † | For 3/8", 1/2" and 5/8" wall board and plaster. Score marks for drywall and plaster depths. Maximum load capacity: 50 lb. (22.7). Length: 10-1/2" to 18-1/2" Packaged complete with stud. |
| 6010-ADW-25 † | For 3/8", 1/2" and 5/8" wall board and plaster. Score marks for drywall and plaster depths. Maximum load capacity: 50 lb. (22.7). Length: 14-1/2" to 26-1/2" Packaged complete with fastener. |
| 6011-DW-25 † | For 3/8", 1/2" and 5/8" wall board and plaster. Score marks for drywall and plaster depths. Maximum load capacity: 50 lb. (22.7). Length: 10-1/2" to 18-1/2" Packaged complete with stud. |
| 6011-ADW-25 † | For 3/8", 1/2" and 5/8" wall board and plaster. Score marks for drywall and plaster depths. Maximum load capacity: 50 lb. (22.7). Length: 14-1/2" to 26-1/2" Packaged complete with fastener. |
| Support Brackets | |
| CI1060 | Length: 16". Grooved for box ears. |



CI1060



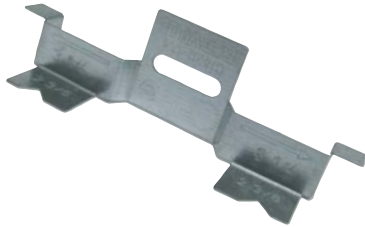
Brackets, Clamps, Partitions

IBERVILLE®

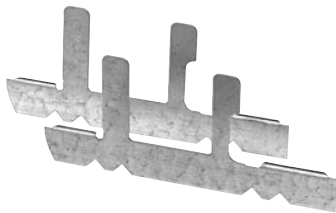
Technical Specifications

Features

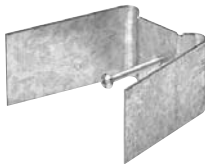
- Quickly attaches box through finished drywall.
- Easy to install.



CI820-DX



CI820D



CILRW



CILA CLAMP



CISSX-6



CI1004-P



CI1104-P



CI2104-P

Cat. No.

Description

Rework Support Brackets

CI820D

Device box supports. Max. wall thickness 1".

CI820-DX

Device box support.

CILRW

For installing CI-1104 series of boxes with ears, in closed wall "rework" applications. Complete with an 8-32 x 1-1/2 screw.

Universal Cable Clamps (for BX / Loomex)

CILA CLAMP

Supplied with screws.

Support Brackets

CISSX-6

Support bracket extension for 6" metal stud.

Device Box Partitions

CI1004-P

Steel partitions for 2", 2-1/2" and 3" deep outlet boxes.

CI1104-P*

Steel partition for 2-1/2" deep gangable boxes.

To be used with CI-1104 / CI-3104 series of boxes.

CI2104-P

Steel partitions for 2" and 2-1/2" deep outlet boxes.

***NOTE: Install partition while ganging boxes.**

In accordance with C.E.C. 2006 Edition, Rule 12-3030, a partition must be used when conductors in a multi-gang box are connected to different sources of voltage.



Technical Specifications



CIBEX



CIXCUBE



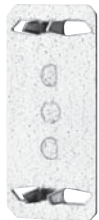
CIBEX-HV



CIXCUBE



CI2SCREAR/SCR



CI66



CI66-FPP



CI66-SS



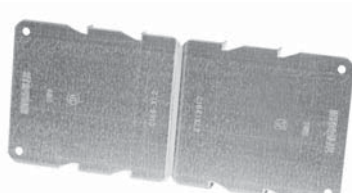
CI66-PPH



CI66-T



CI66-XL



CI66-XL-2

Cat. No.

Description

Device Box Extensions

CIBEX

2" x 3" switch box extension.
Maximum adjustable depth is 7/8".
Complete with mounting screws.

CIBEX-HV

2" x 3" switch box extension. High voltage (347V) for use with CI1204-HV series. Maximum adjustable depth is 7/8". Complete with mounting screws. Adds 5.5 cu. in. to any 2-1/2" deep gangable device box. Provision for external nailing.

CIXCUBE

Ground Screws

GS-1-IB *

8-32 x 5/16" large combination head screw.

CI1SCREAR/SCR

Box ear and screw only, one hole model.

CI2SCREAR/SCR

Box ear and screw only, two hole model.

Cat. No.

**Dimensions
W x H (in.)**

Cable Protector Plates

CI66

1-3/8 x 3

CI66-FPP

2-3/8 x 3-1/2

CI66-PPH

1-1/4 x 3

CI66-SS

4-3/8 x 1-7/8

CI66-T

4-1/4 x 3/4

CI66-XL

4-1/4 x 3-3/4

CI66-XL-2

8-1/2 x 3-3/4

In accordance with C.E.C., 2002 Edition, rule 12-516.

* Not Applicable



Low Voltage Brackets

Steel

IBERVILLE®

Technical Specifications

Features

- Eliminates the need for an electrical box when installing low voltage Class 2 wiring.
- For old work or new work.
- Installs easily with a drywall saw and screwdriver.



CIMB-1



WBF-1

| Cat. No. | Description |
|--------------------------------------|---|
| Low Voltage Mounting Brackets | |
| CIMB-1 | Mounting bracket that provides quick installation of low voltage class 2 communication outlets. Raised 1/2". Positioning tabs ensure straight installation. |
| WBF-1 | Low voltage wall bracket. |

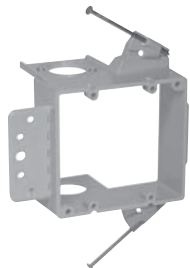
Low Voltage Brackets

Non-Metallic

Carlton®



SC100A



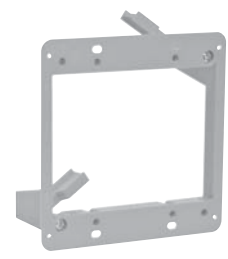
SC200A



SC300A



SC100RR



SC200RR

Open-backed to easily accommodate the bend radiuses required for low voltage cabling and deep devices such as volume controls, and is designed to fit a standard two-gang three-gang faceplate. It also features an easy nail-on mounting or screw-in bracket, while more hard shell provides increased durability and no racking.

Swing arm rework bracket. 1 gang.

Swing arm rework bracket. 2 gang.



SC100SC

This low voltage bracket provides a low voltage outlet next to a previously installed high voltage outlet. For new construction and rework. Attaches easily to most electrical boxes, and is designed to fit a standard two-gang faceplate.



SC100ADJC

New work adjustable low voltage bracket. 1 gang.

Technical Specifications

| Cat. No. | Description |
|-------------------------------------|--|
| New Work Brackets | |
| SC100A | One-Gang backless bracket 2.32"W x 3.73"L |
| SC200A | Two-Gang backless bracket 5.35"W x 3.81"L |
| SC300A | Three-Gang backless bracket 8.69"W x 7.20"L |
| Rework Brackets | |
| SC100RR | One-Gang backless old work bracket w/ swing clamps 2-1/4" x 3-1/4" |
| SC200RR | Two-Gang backless old work bracket w/ swing clamps 3.92" x 4.00" |
| Add-On Bracket | |
| SC100SC | One-Gang Add-On Bracket 1.80"W x 3.68"L |
| New Work Adjustable Brackets | |
| SC100ADJC | One-Gang adjustable brackless bracket 3-7/8"W x 3-3/4"H |
| SC200ADJC | Two-Gang adjustable brackless bracket 5-5/8"W x 3-5/8"H |

Technical Specifications

Features

- Made from tough, resistant material which can be used without cracking at extreme cold temperatures.
- Transparent material makes installation easy and safe.
- Flange is constructed to ensure a good seal on panel surface.



BCVB-1



BCVB-2



BCVB-3



CIVB-4



BCVB-54



CI1004-VB



CI5254-VB




CI72171-VB



CIDS-55

| Cat. No. | Description |
|--|--|
| Vapour Barriers — Soft Polyethylene | |
| BCVB-1 | For 2" x 3" single device boxes up to 3" deep. |
| BCVB-2 | For 4" square and 2 gang 2" x 3" device boxes up to 3" deep. |
| BCVB-3 | For 3 gang 2" x 3" device boxes up to 3" deep. |
| CIVB-4 | For 4 gang 2" x 3" device boxes up to 3" deep. |
| BCVB-54 | For octagonal boxes up to 2-1/8" deep. |

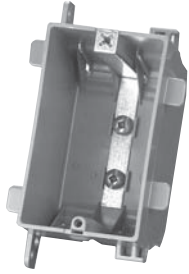
| Cat. No. | Description |
|--|---|
| Vapour Barriers — High Density Polyethylene | |
| CI1004-VB | For 2" x 3" single device boxes up to 3" deep. |
| CI5254-VB | For 4" square and 2 gang 2" x 3" boxes up to 3" deep. |
| CI72171-VB | For 4-11/16" square boxes up to 2-1/8" deep. |

| Cat. No. | Description |
|---|---|
| Door Switches | |
| CIDS-55 | 3-11/16" H x 1-11/32" W x 1-1/2" deep 4.5 cu. in. |
|  | Light's on when door's opened. |
| | Kit contains: |
| | <ul style="list-style-type: none"> • 3 Amp., 125 Volt A.C. switch with steel push button. • Steel box and mounting plate. • Mounting screws and wire connectors. • Instruction sheet. |

Non-Metallic Boxes

Non-Metallic

NuTek®



WSW-N



WSW



2-WSW



3-WSW



WSW-BX

Technical Specifications

| Cat. No. | Width | Capacity (cu. in.) | Cable Entries | Use with |
|---|--------|--------------------|---------------|-----------------------------|
| 2-3/4" Deep - Non-Gangable - 3-3/4" High | | | | |
| WSW | 2-1/4" | 18 | 4 | Non-metallic sheathed cable |
| WSW-BX | 2-1/4" | 20 | 4 | AC90-Armoured cable |
| WSW-N | 2-1/4" | 18 | 4 | Non-metallic sheathed cable |
| 2-WSW | 4" | 33 | 8 | Non-metallic sheathed cable |
| 3-WSW | 5-3/4" | 54 | 12 | Non-metallic sheathed cable |



Non-Metallic Boxes

Non-Metallic - Airtight model

NuTek®



F-WSW



2-FWSW



3-FWSW



FWSWBX

Technical Specifications

| Cat. No. | Width | Capacity (cu. in.) | Cable Entries | Use with |
|---|--------|--------------------|---------------|-----------------------------|
| 2-3/4" Deep - Non-Gangable - 3-3/4" High | | | | |
| F-WSW | 2-1/4" | 18 | 4 | Non-metallic sheathed cable |
| WSW-FC* | 2-1/4" | 18 | 4 | Non-metallic sheathed cable |
| FWSWBX | 2-1/4" | 20 | 4 | AC90 - Armoured cable |
| 2-FWSW | 4" | 33 | 8 | Non-metallic sheathed cable |
| 3-FWSW | 5-3/4" | 54 | 12 | Non-metallic sheathed cable |

*Without sealing

Flanges and cable entry tabs are covered with 100% airtight foam gaskets.



Non-Metallic Boxes

Airtight Model

NuTek®



FWOCT



WOCT



WRD



FWRD

Technical Specifications

| Cat. No. | Capacity (cu in) | Cable Entries | Use with |
|--|------------------|---------------|-----------------------------|
| 2-3/4" Deep - 3-3/4" High - 4" Wide | | | |
| FWOCT* | 26 | 4 | Non-metallic sheathed cable |
| WOCT | 26 | 4 | Non-metallic sheathed cable |
| 3" Deep - 4-11/16" High - 4-11/16" Wide | | | |
| WRD* | 26 | 4 | Non-metallic sheathed cable |
| FWRD | 26 | 4 | Non-metallic sheathed cable |

*Flanges and cable entry tabs are covered with 100% airtight foam gaskets.

NOTE: CEC 2006 rule 30-302: 4) Where the weight of a luminaire does not exceed 23 kg (50 lbs), the luminaire shall be permitted to be supported by a ceiling outlet box attached directly to the building structure or by a ceiling outlet box attached to a bar hanger.

Extension Rings/Vapour Barriers

Non-Metallic

NuTek®



WXT12



WXT18



WXT58



WSW-VB



WOCT-VB

Technical Specifications

| Cat. No. | Raised |
|------------------------|--------|
| Extension Rings | |
| WXT-12 | 1/2" |
| WXT-18 | 1/8" |
| WXT-58 | 5/8" |

| Cat. No. | Description |
|------------------------|--|
| Extension Rings | |
| WOCT-VB | Soft booth for use with WOCT ceiling boxes or 2WSW 2 gang switch boxes |
| WSW-VB | Soft booth for use with WSW 1 gang switch boxes |

Alphanumeric Index

IBERVILLE®

| Cat. No. | Page |
|---------------|---------|
| 2-FWSW | .71 |
| 2-WSW | .70 |
| 3-FWSW | .71 |
| 3-WSW | .70 |
| 52-C-52-1 | .39 |
| 52-C-52-1/2 | .39 |
| 52-C-52-1-1/4 | .39 |
| 52-C-52-3/4 | .39 |
| 52-C-53-1-1/2 | .39 |
| 52-C-54-2 | .39 |
| 52C-ADJ | .39 |
| 6010-ADW-25 | .64 |
| 6010-DW-25 | .64 |
| 6011-ADW-25 | .64 |
| 6011-DW-25 | .64 |
| A273DE | .47 |
| A273EF | .47 |
| A863CDGF | .47 |
| A863CFG | .47 |
| A863CFGF | .47 |
| A863CSGF | .47 |
| A863DG | .47 |
| A863SG | .47 |
| BC1004-L | .23 |
| BC1004-LH | .23 |
| BC1004-LRB | .58 |
| BC1018-LHTQ | .13, 23 |
| BC1041 | .64 |
| BC1042 | .64 |
| BC1100-L | .18 |
| BC1100-LLE | .18 |
| BC1102 | .16 |
| BC1102-L | .18 |
| BC1102-LH | .18 |
| BC1104 | .16, 53 |
| BC1104-L | .19 |
| BC1104-LA | .24 |
| BC1104-LB | .19 |
| BC1104-LE | .17 |
| BC1104-LHA | .24 |
| BC1104-LHT | .19 |
| BC1104-LRB | .19, 58 |

| Cat. No. | Page |
|----------------|---------|
| BC1104-LRW | .19, 58 |
| BC1104-LSSAX | .24 |
| BC1104-LSSX | .19 |
| BC1110 | .45 |
| BC1110-LSKO | .45 |
| BC1110-R | .45, 57 |
| BC1110-SSX | .45, 63 |
| BC1151 | .45 |
| BC1199 | .45 |
| BC11-C-1 | .45 |
| BC11-C-10 | .45 |
| BC11-C-2 | .45 |
| BC11-C-3 | .45 |
| BC11-C-4 | .45 |
| BC11-C-4-HV | .45, 51 |
| BC11-C-5 | .45 |
| BC11-C-5-HV | .45, 51 |
| BC1304-LHT | .23 |
| BC1304-LHTQ | .13, 19 |
| BC1504-LLE | .21 |
| BC2004-LH | .22 |
| BC2004-LHTQ | .13, 22 |
| BC2020 | .44 |
| BC2020-R | .44, 57 |
| BC20-C-1 | .44 |
| BC20-C-3 | .44 |
| BC20-C-4 | .44 |
| BC20-C-5 | .44 |
| BC2104-LLE | .20 |
| BC2104-LLE-2 | .20 |
| BC2104-LLE-3 | .20 |
| BC2104-LLE-4 | .20 |
| BC2104-LN | .20 |
| BC2104-LRB | .20, 58 |
| BC2104-LRB-2 | .20, 58 |
| BC2104-LX | .20 |
| BC2304-LHTQ | .13, 20 |
| BC2304-LHTQ-2 | .13, 20 |
| BC2304-LHTQ-3 | .13, 20 |
| BC2304-LHTQ-4 | .13, 20 |
| BC3004-LH | .23 |
| BC3104-KSS1X-1 | .17, 61 |

| Cat. No. | Page |
|-------------------|-----------------|
| BC3104-LH | .22 |
| BC3104-LHTQ | .13, 22 |
| BC3104-LSSAX | .26, 61 |
| BC3104-LSSX | .22, 26, 61 |
| BC4104-L | .54 |
| BC52151-K | .36 |
| BC52151-KSSX | .36, 63 |
| BC52171-HV-KIT | .37, 50 |
| BC52171-K | .37 |
| BC52171-KSSX | .37, 63 |
| BC52171-KSSXHVKIT | .37, 50, 52, 63 |
| BC52-C-0 | .38 |
| BC52-C-00 | .38 |
| BC52-C-1 | .38 |
| BC52-C-13 | .38 |
| BC52-C-17 | .38 |
| BC52-C-49-1 | .39 |
| BC52-C-49-1/2 | .39 |
| BC52-C-49-3/4 | .39 |
| BC52-C-49-5/8 | .39 |
| BC52-C-6 | .38 |
| BC53151-K | .36, 57 |
| BC53171-K | .37, 57 |
| BC54151-K | .32 |
| BC54151-L | .33 |
| BC54151-LA | .34 |
| BC54151-LB | .33 |
| BC54151-LD | .32, 58 |
| BC54151-LSSAX | .34, 63 |
| BC54171-K | .32 |
| BC54171-L | .33 |
| BC54171-LA | .34 |
| BC54171-LB | .33 |
| BC54171-LSSAX | .34 |
| BC54-C-1 | .35 |
| BC54-C-6 | .35 |
| BC54-C-65 | .35 |
| BC54-C-94 | .35 |
| BC54-COV | .35 |
| BC54-COV-1 | .35 |
| BC55151-K | .32, 57 |
| BC56111 | .32 |

Alphanumeric Index

IBERVILLE®

| Cat. No. | Page | Cat. No. | Page | Cat. No. | Page |
|-------------|---------|-------------------|---------|-----------------|---------|
| BC72171-K | .42 | CI1104-P | .55, 65 | CI3104-LSS1X-1 | .22, 61 |
| BC72-C-1 | .43 | CI1104-SB | .17 | CI3104-LSSA1X-1 | .26, 61 |
| BC72-C-17 | .43 | CI1110-HV | .51 | CI3104-SSX | .17, 61 |
| BC72-C-6 | .43 | CI1110-SB | .45 | CI4004 | .15 |
| BC73151-K | .42, 57 | CI1141 | .45 | CI4104-LA | .54 |
| BC73171-K | .42, 57 | CI11-C-10-HV | .45, 51 | CI4204-KSSX | .54, 62 |
| BC775-LD | .19, 58 | CI1204-1-HV | .50, 53 | CI4204-LSSAX | .54, 62 |
| BC777-LRB | .19, 58 | CI1204-2-HV | .50 | CI4204-LSSAX-1 | .54, 62 |
| BC8361 | .40 | CI1204-3/4-SSX-HV | .60 | CI4204-LSSX | .54, 62 |
| BC8362 | .40 | CI1204-LA-HV | .50 | CI425 | .16, 58 |
| BC8363 | .40 | CI1204-LSSAX-HV | .50, 62 | CI425-L | .18, 58 |
| BC8364 | .40 | CI1204-LSSAX-HV-1 | .50 | CI4304-LSSAX | .54, 62 |
| BC8365 | .40 | CI1204-SS1X-HV | .50, 62 | CI4304-LSSX | .54, 62 |
| BC8366 | .40 | CI1204-SSX-HV | .50, 62 | CI52151-KSB | .36 |
| BC8367 | .40 | CI1504-LSSAX | .26, 61 | CI52171-1 | .37 |
| BC8368 | .41 | CI1804-LH | .22 | CI52171-1-SSX-1 | .37, 63 |
| BC8371 | .41 | CI1SCREAR/SCR | .66 | CI52171-KSB | .37 |
| BC8375 | .41 | CI2004-LHA | .26 | CI52171-KSSX-1 | .37, 63 |
| BC8376 | .41 | CI2016-LX | .22 | CI5254-VB | .69 |
| BC8377 | .41 | CI2018 | .44 | CI525-L | .19, 58 |
| BC8378 | .41 | CI2018-SB | .44 | CI52-C-10 | .38 |
| BC97002 | .29, 41 | CI2104-LLEA | .25 | CI52-C-14 | .38 |
| BCCWB-18 | .46 | CI2104-LSS1X-1 | .21, 60 | CI52-C-14-5/8 | .38 |
| BCMMD-1-K | .48 | CI2104-LSSA1X-1 | .21 | CI52-C-15 | .38 |
| BCOBEX | .32, 57 | CI2104-LSS2X | .21, 60 | CI52-C-16 | .38 |
| BCR2000 | .15 | CI2104-LSS2X-1 | .21, 60 | CI52-C-18 | .38 |
| BCVB-1 | .69 | CI2104-LSSA2X-1 | .21 | CI52-C-18-5/8 | .38 |
| BCVB-2 | .69 | CI2104-LSS3X | .21, 60 | CI52-C-3 | .38 |
| BCVB-3 | .69 | CI2104-LSS3X-1 | .21, 60 | CI52-C-49-1-1/4 | .39 |
| BCVB-54 | .69 | CI2104-LSSA-2X | .25, 60 | CI52-C-50-1-1/2 | .39 |
| CI1004 | .17 | CI2104-LSSA-3X | .25, 60 | CI52-C-51-2 | .39 |
| CI1004-LB | .23 | CI2104-LSSAX | .25, 60 | CI52-C-62 | .38 |
| CI1004-LHA | .26 | CI2104-LSSX | .21, 60 | CI53171-ER | .46, 57 |
| CI1004-P | .55, 65 | CI2104-P | .55, 65 | CI54151-KSSX | .32, 63 |
| CI1004-VB | .69 | CI2SCREAR/SCR | .66 | CI54171-KSSX | .32, 63 |
| CI1060 | .64 | CI3004-LSSAX-1 | .24, 61 | CI54171-KSSX-1 | .32, 63 |
| CI1100-LRE | .18 | CI3004-LSSX | .23, 61 | CI54171-LF | .33 |
| CI1102-SB | .16 | CI3004-LSSX-1 | .23, 61 | CI54521 | .46 |
| CI1104-B | .16 | CI3102-LSSAX | .24, 60 | CI54531 | .46 |
| CI1104-K | .17 | CI3102-SSX | .16, 60 | CI54541 | .46 |
| CI1104-LMS | .19 | CI3104-KSSX | .17, 61 | CI54551 | .46 |
| CI1104-LMSA | .24 | CI3104-LHA | .26 | CI54560 | .46 |

Alphanumeric Index

IBERVILLE®

| Cat. No. | Page | Cat. No. | Page | Cat. No. | Page |
|----------------------------|------------|----------------|--------|---------------|----------------|
| CI54561 | 46 | CI97151-HV | 29 | CIMBS-2-HV | 49 |
| CI54561-1/2 | 46 | CI97154-HV | 29 | CIMBS-2-K | 48 |
| CI54571 | 46 | CI97154-HVR | 29 | CIMBS-3-HV | 49 |
| CI54581 | 46 | CI97181 | 29, 30 | CIMBS-3-K | 48 |
| CI54591 | 46 | CI97191 | 29 | CIMBS-4-HV | 49 |
| CI54-C-64 | 35 | CI97401 | 28, 30 | CIMBS-4-K | 48 |
| CI55171-K | 32, 57 | CI97406 | 28 | CIMBS-5-K | 48 |
| CI66 | 66 | CI97532 | 28 | CIMBS-6-K | 48 |
| CI66-FPP | 66 | CI97573 | 28 | CIMBS-HV-PART | 49 |
| CI66-PPH | 66 | CICBA | 46 | CIMBS-P | 48 |
| CI66-SS | 66 | CIDS-55 | 69 | CISBEX | 53, 66 |
| CI66-T | 66 | CIFS-1G-1/2-HV | 51 | CISBEX-HV | 50, 53, 66 |
| CI66-XL | 66 | CIFS-1G-3/4-HV | 51 | CISSX-6 | 60, 61, 62, 65 |
| CI66-XL-2 | 66 | CIFS-9-HV | 51 | CIVB-4 | 69 |
| CI6851-HV | 29, 30, 52 | CIGBC-2 | 56 | CIXCUBE | 66 |
| CI6851-RF | 29 | CIGBC-3 | 56 | FWOCT | 72 |
| CI6852-HV | 30, 52 | CIGBC-4 | 56 | FWRD | 72 |
| CI6853-HV | 52 | CIGBC-5 | 56 | F-WSW | 71 |
| CI6854-HV | 29, 30, 52 | CIGBC-6 | 56 | FWSWBX | 71 |
| CI72151-K | 42 | CIGSB-2 | 56 | GS-1-IB | 66 |
| CI72171-1 | 42 | CIGSB-3 | 56 | SC100A | 68 |
| CI72171-KSB | 42 | CIGSB-4 | 56 | SC100ADJC | 68 |
| CI72171-KSSX | 42, 63 | CIGSB-5 | 56 | SC100RR | 68 |
| CI72171-1-SSX | 42 | CIGSB-6 | 56 | SC100SC | 68 |
| CI72171-VB | 69 | CIHVP | 50 | SC200A | 68 |
| CI72-A-52 | 43 | CILA CLAMP | 65 | SC200ADJC | 68 |
| CI72-C-10 | 43 | CILRW | 65 | SC200RR | 68 |
| CI72-C-13 | 43 | CILVP | 56 | SC300A | 68 |
| CI72-C-14 | 43 | CIMB-1 | 55, 65 | WBF-1 | 55, 67 |
| CI775-L | 19 | CIMBD-1-HV | 49 | WOCT | 72 |
| CI820D | 65 | CIMBD-2-HV | 49 | WOCT-VB | 74 |
| CI820-DX | 55, 65 | CIMBD-2-K | 48 | WRD | 72 |
| CI97011 | 28, 30 | CIMBD-3-HV | 49 | WSW | 70 |
| CI97014 | 28 | CIMBD-3-K | 48 | WSW-BX | 70 |
| CI97071 | 28, 30 | CIMBD-4-HV | 49 | WSW-FC | 71 |
| CI97072-HVR to CI97074-HVR | 30 | CIMBD-4-K | 48 | WSW-N | 70 |
| CI97074-HVR | 29 | CIMBD-5-K | 48 | WSW-VB | 74 |
| CI97080 | 28, 30 | CIMBD-6-K | 48 | WXT-12 | 73 |
| CI97091 | 29, 30 | CIMBD-HV-PART | 49 | WXT-18 | 73 |
| CI97101 | 28, 30 | CIMBD-P | 48 | WXT-58 | 73 |
| CI97121 | 28 | CIMBS-1-HV | 49 | | |
| CI97124 | 28 | CIMBS-1-K | 48 | | |

NOTES

NOTES