



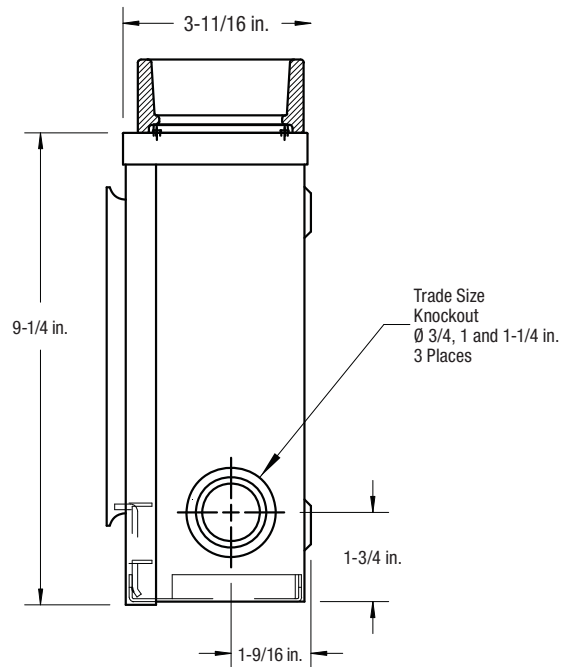
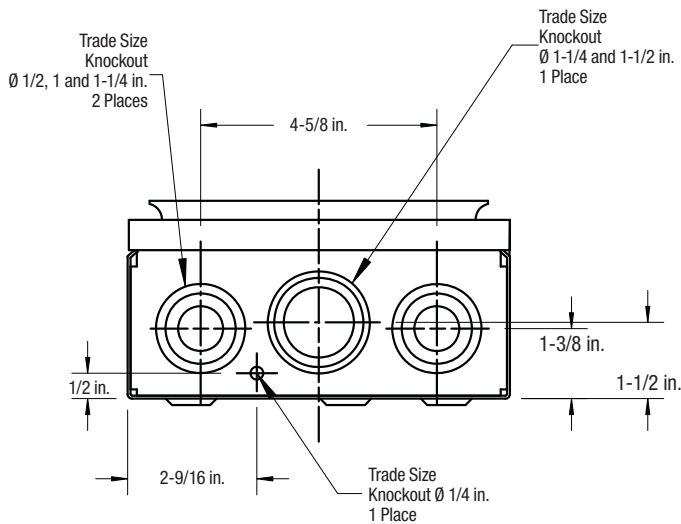
(CL4-V)


CL Series

Transformer Rated 20 A 600 V Max.

Product Specifications

- Conductor range: 14-10 AWG
- Aluminum tunnel type connectors for both load and line sides
- Circuit closing feature to short out current transformer upon removal of meter
- For overhead hub opening only
- Supplied with screw type ring
- Weatherproof Type 3R enclosure
- Primarily used in: Sask., Man., Ont., N.B., N.S., P.E.I., NFLD



 Approved for copper only

Cat. No.	Description	Dimensions (in.)			Weight Each	
		H	W	D	lb.	kg
4 JAW						
CL4-V	Circuit closing on left side	9-1/4	7-5/8	3-11/16	7	3.1
CL4-LRV	Circuit closing both left and right sides					
CL4-TV	Circuit closing on left side, no hub opening					
5 JAW						
CL5-V	Circuit closing on left side (Lower right hand jaw is a support only)	9-1/4	7-5/8	3-11/16	7	3.1
6 JAW						
CL6-LRV	Circuit closing both left and right sides	9-1/4	7-5/8	3-11/16	7	3.1

AB Series

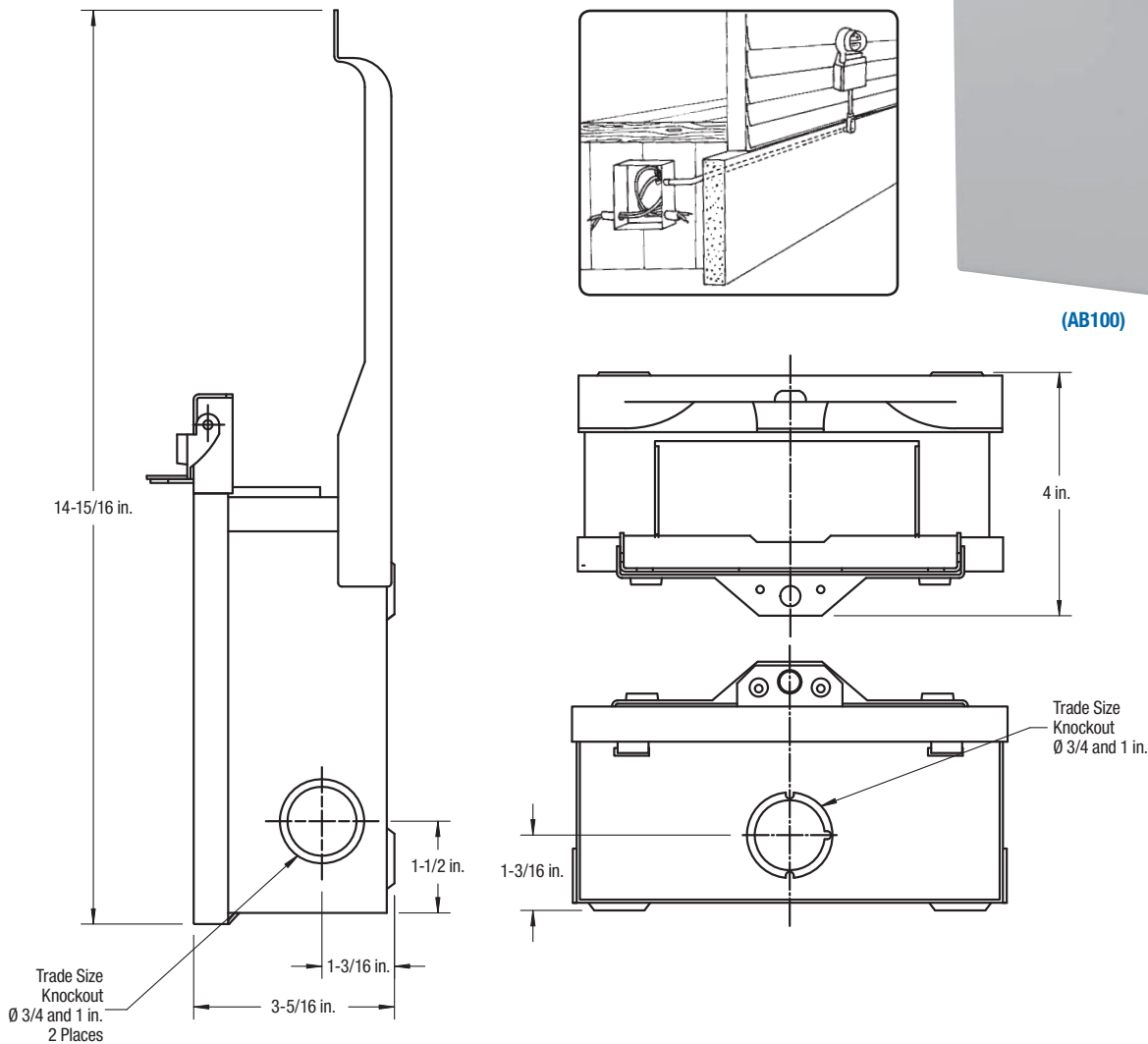
Transformer Rated 20 A 600 V Max.

Product Specifications

- Suitable for 120/240 V single phase service entrance over 200 A when meter is outdoors with current transformers indoors
- Enclosure only – complete with neoprene gasket and meter mounting screws for use with bottom connected meter
- Replacement gasket available. Specify: Cat. No. NEO-100
- Weatherproof Type 3R enclosure
- Primarily used in: Quebec



(AB100)



 Approved for copper only

Cat. No.	Description	Dimensions (in.)			Weight Each	
		H	W	D	lb.	kg
AB100	Weatherproof Type 3R enclosure	14-15/16	7	3-5/16	7	3.1



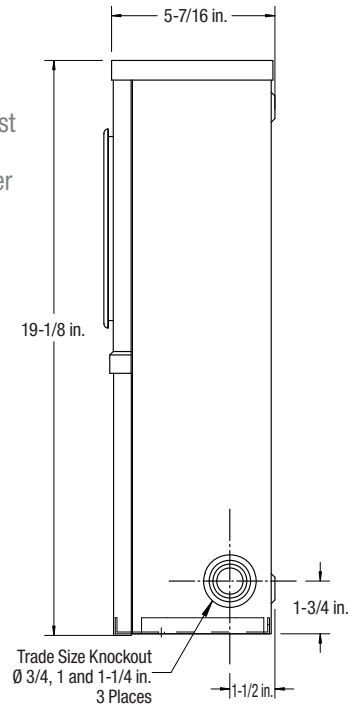
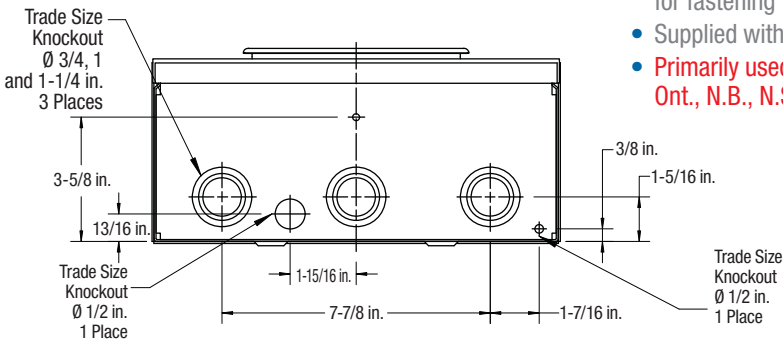
(CT113)

CT Series

Transformer Rated c/w Compartment for Test Switch – 20 A 600 V Max.

Product Specifications

- Conductor range: 14-10 AWG
- Tunnel type connectors for both load and line sides
- For underground service only
- Meter compartment cover overlaps lower test switch compartment cover; insertion of meter securely holds upper cover in place by means of a catch
- Lower test switch compartment cover securely held by upper cover and a catch at bottom
- A removable mounting bridge is provided for fastening test switch
- Supplied with screw type ring
- **Primarily used in: AB, Sask., Man., Ont., N.B., N.S., P.E.I.**



SP Approved for copper only

Cat. No.	Description	Dimensions (in.)			Weight Each	
		H	W	D	lb.	kg
4 JAW						
CT104	Unwired unit with test switch provision	19-1/8	11-13/16	5-7/16	16	7.2
5 JAW						
CT105	Unwired unit with test switch provision	19-1/8	11-13/16	5-7/16	16	7.2
8 JAW						
CT108	Unwired unit with test switch provision	19-1/8	11-13/16	5-7/16	18	8.1
13 JAW						
CT113	Unwired unit with test switch provision	19-1/8	11-13/16	5-7/16	19	8.6

Lower test switch compartment cover securely held by upper cover and a out device with an enlarged pad hole (0.375 in. dia.)

SP Approved for copper only

Cat. No.	Description	Dimensions (in.)			Weight Each	
		H	W	D	lb.	kg
5 JAW						
CT105-L	BC Hydro approved with SWL cover with enlarged padlock hole	19-1/8	11-13/16	5-7/16	16	7.2
8 JAW						
CT108-L	BC Hydro approved with SWL cover with enlarged padlock hole	19-1/8	11-13/16	5-7/16	18	8.1
13 JAW						
CT113-L	BC Hydro approved with SWL cover with enlarged padlock hole	19-1/8	11-13/16	5-7/16	19	8.6

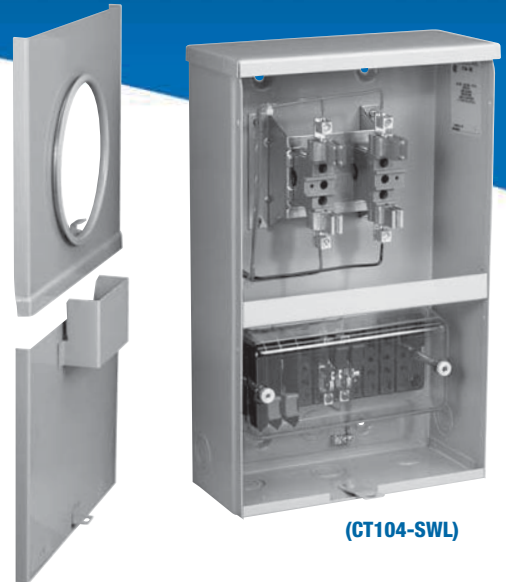


CT-SWL Series

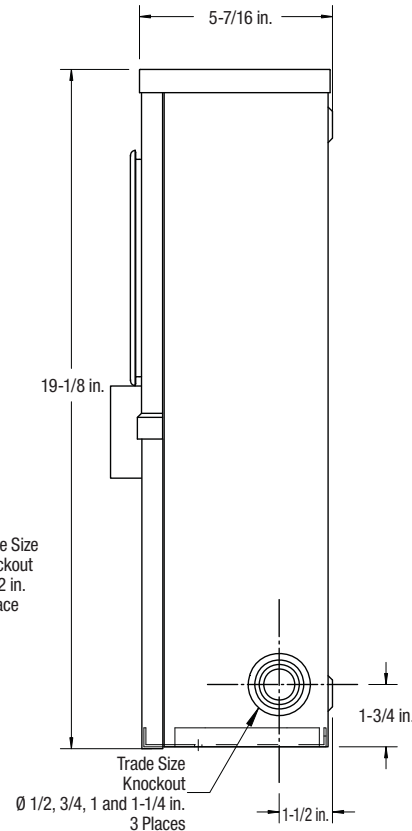
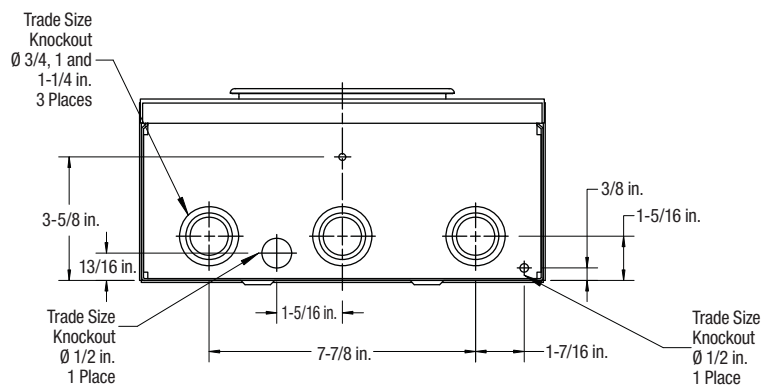
**Transformer Rated c/w Test Switch
20 A 600 V Max.**

Product Specifications

- Conductor range: 14-10 AWG
- Tunnel type connectors for both load and line sides
- For underground service only
- Lower test switch compartment cover securely held by upper cover and a out device with an enlarged pad hole (0.375 in. dia.)
- Test switch included as part of these models
- Units are pre-wired from base to test switch
- Furnished with tamper resistant device for meter ring
- Weatherproof Type 3R enclosure
- **Primarily used in: Alberta**



(CT104-SWL)



Cat. No.	Description	Dimensions (in.)			Weight Each	
		H	W	D	lb.	kg
4 JAW						
CT104-SWL	Factory pre-wired unit with lockout device on bottom door	19-1/8	11-13/16	5-7/16	18	8.2
CT104-6SWL	Factory pre-wired unit with lockout device on bottom door (Enmax approved) 5th Jaw in 6 o'clock position					
6 JAW						
CT106-SWL	Factory pre-wired unit with lockout device on bottom door	19-1/8	11-13/16	5-7/16	21	9.5
13 JAW						
CT113-SWL	Factory pre-wired unit with lockout device on bottom door	19-1/8	11-13/16	5-7/16	21	9.5