

## Armoured Cable / Flexible Conduit

### Connectors



CI70



Zinc Die Cast Locknut

L-16



Zinc Die Cast Locknut

CI71 / CI73



Zinc Die Cast Locknut

CI2175



Zinc Die Cast Locknut

CI2275 **New**



Zinc Die Cast Locknut

CI2210 / CI2236



Zinc Die Cast Locknut

CI2238 / CI2240



Zinc Die Cast Locknut

CI4090



Zinc Locknut

Cat. No.	Trade Size (in.)	Clamping Range (in.)		Suggested Application AC90 (BX)	Flex. Conduit
		Min.	Max.		
<b>One Screw Fittings (Zinc Alloy)</b>					
L-16	3/8	0.12	0.63	14/2-10/2-14/3-10/3-14/4-10/4	5/16-3/8
CI70	3/8	0.13	0.70	14/2, 12/2, 10/2, 14/3, 12/3, 10/3, 14/4	3/8
CI71	1/2	0.33	0.95	14/2-10/2; 14/3-10/3; 14/4-8/4	5/16, 3/8, 1/2
CI72	3/4	0.60	1.15	6/2; 8/3-3/3; 8/4-3/4	1/2, 3/4
CI73	1	0.93	1.47	3/3-3/0/3; 2/4-1/4	3/4, 1
<b>Duplex Fitting (Zinc Alloy)</b>					
CI2175	3/8	0.15	0.65	14/2-10/2; 14/3-10/3; 14/4-12/4	3/8
CI2275* <b>New</b>	3/8	0.45	0.58	14/2-10/2; 14/3-10/3; 14/4-12/4	3/8
<b>90° Fittings (Zinc Alloy)</b>					
CI2210	3/8	0.40	0.63	14/2-10/2; 14/3-10/3 14/4-12/4	3/8
CI2211	1/2	0.65	0.97	8/2; 8/3; 10/4	1/2
CI2214	3/4	0.77	1.12	1/0/1-4/0/1; 6/2-4/2; 8/3-3/3; 8/4-6/4	3/4
CI2216	1	1.06	1.40	4/0/1-350/1; 2/2; 4/3-2/3; 6/4-4/4	1
CI2218	1-1/4	1.34	1.65	500/1-750/1; 1/3-3/0/3; 1/4-1/0/4	1-1/4
CI2234	1-1/2	1.70	2.15	600/1-1000/1; 2/0/3; 1/4-3/0/4	1-1/2
CI2236	2	1.51	2.47	600/1-1000/1; 2/0/3-400/3; 1/4-4/0/4	1-1/2 - 2
CI4090	4	4.17	4.62	—	4
<b>90° Fittings (Zinc Alloy)</b>					
CI2238	2-1/2	2.50	3.08	600/3-750/3	2-1/2
CI2240	3	2.95	3.55	1000/3	3

Also suitable for ACWU90 (of equivalent diameters) in dry locations. A non-ferrous connector and locknut must be used to terminate a single conductor cable when nominal current exceeds 200 A.

\* Suitable for AC90 and ACG90: Clamping range for AC90 is 0.45–0.58 and for ACG90 is 0.47–0.57.

**NOTE:** 3/8 in. trade size fittings require a 1/2 in. knockout

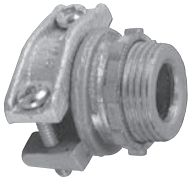
Technical improvements are constantly taking place in the electrical industry. Cable manufacturers are changing their products from time to time. Accordingly, it is strongly suggested that you verify the cable size with the cable manufacturer prior to selecting a fitting. See specification guide section for dimensions (D38-D39).

## Armoured Cable / Flexible Conduit

### Fittings



CI2104 / CI2124



Zinc Die Cast Locknut

CI2163



Zinc Die Cast Locknut

CI2166 / CI2172



Zinc Die Cast Locknut

Cat. No.	Trade Size (in.)	Clamping Range (in.)		Suggested Application AC90 (BX)	Flex. Conduit
		Min.	Max.		
<b>Two Screw Fittings (Cast Aluminium Body and Clamp)</b>					
CI2104	1/2	0.45	0.59	14/2-10/2; 14/3-10/3; 14/4-12/4 ACWU90: 10/2; 12/3-10/3; 12/4; 12/5	5/16
CI2106	3/4	0.55	0.78	10/2-8/2; 10/3-8/3; 12/4-10/4 ACWU90: 3/1-2/1; 8/2; 10/3-8/3; 10/4; 12/5	3/8-7/16
CI2108	1	0.69	1.01	1/0/1-2/0/1; 8/2-6/2; 8/3-6/3; 8/4 ACWU90: 3/1-3/0/1; 6/2-4/2; 8/3-4/3; 8/4-6/4	1/2
CI2110	1-1/4	0.84	1.33	1/0/1-350/1; 6/2-2/2; 6/3-2/3; 8/4-4/4 ACWU90: 1/0/1-400/1 6/2-1/2; 6/3-2/3; 8/4-2/4	3/4
CI2112	1-1/2	1.06	1.57	4/0/1-600/1; 2/2-1/2; 4/3-2/0/3; 4/4-1/4 ACWU90: 4/0/1-600/1; 1/0/2-3/0/2; 4/3-2/0/3; 6/4-1/0/4	1
CI2116	2	1.38	2.06	500/1-1000/1; 1/0/3-300/3; 1/4-3/0/4 ACWU90: 500/1-1000/1; 2/0/2-350/2; 1/0/3-300/3; 1/4-4/0/4	1-1/4, 1-1/2
CI2120	2-1/2	1.95	2.47	400/3 - 500/3 300/4 - 500/4	1-1/2, 2
CI2124	3	2.25	3.57	500/4 - 750/4	2, 2-1/2
<b>One Screw Fitting (Zinc Alloy)</b>					
CI2163	3/8	0.35	0.61	14/2-10/2; 14/3-10/3; 14/4-12/4	3/8
<b>One Screw Fittings (Aluminum)</b>					
CI2166	1/2	0.50	0.90	12/2-8/2; 12/3-8/3; 14/4-10/4	1/2
CI2167	3/4	0.71	1.10	1/0/1-4/0/1; 6/2-4/2; 8/3-3/3; 8/4-6/4	3/4
CI2169	1	1.16	1.40	250/1-300/1; 2/3; 4/4	1
CI2170	1-1/4	1.32	1.77	400/1-600/1; 1/2; 1/3-2/0/3; 1/4	1-1/4
CI2171	1-1/2	1.77	2.05	1000/1; 4/0/3 ACWU90: 1000/1; 4/0/3; 3/0/4	1-1/2
CI2172	2	2.10	2.54	350/3-400/3 ACWU90: 1500/1; 500/2; 350/3-400/3; 250/4-300/4	2

Also suitable for ACWU90 (of equivalent diameters) in dry locations. CI2104/CI2116 fittings may also be used for RA90 cables of equivalent diameters. A non-ferrous connector and locknut must be used to terminate a single conductor cable when nominal current exceeds 200 A

**NOTE:** 3/8 in. trade size fitting require a 1/2 in. knockout

Technical improvements are constantly taking place in the electrical industry. Cable manufacturers are changing their products from time to time. Accordingly, it is strongly suggested that you verify the cable size with the cable manufacturer prior to selecting a fitting. See specification guide section for dimensions (D38-D39).

## Armoured Cable / Flexible Conduit

### Fittings

CI2173 / CI2174



Zinc Die Cast Locknut

CI4000



Aluminum Locknut and Plastic Bushing



Cat. No.	Trade Size (in.)	Clamping Range (in.)		Suggested Application AC90 (BX)	Flex. Conduit
		Min.	Max.		
<b>Two Screw Fittings (Zinc Alloy)</b>					
CI2173	2-1/2	2.05	3.07	250/3-600/3; 250/4-300/4 ACWU90: 1500/1; 500/2	2, 2-1/2
CI2174	3	2.25	3.57	350/3-600/3; 4/0/4-300/4 ACWU90: 1500/1; 500/2	2-1/2, 3
<b>Two Screw Fitting (Aluminum)</b>					
CI4000	4	4.40	4.55	—	4

See specification guide section for dimensions (D38-D39).



Cat. No.	Trade Size (in.)	Description
<b>Cable Lok One-Screw Fittings (Galvanized Steel)</b>		
XC-730 *	1/2	Single Connector
XC-731	1/2	Single Connector
XC-732	3/4	Single Connector
XC-7300	1/2	Duplex Connector

\* Not CSA certified



XC-730

Cable Type	XC-730 1/2 in. Single	XC-731 1/2 in. Single	XC-732 3/4 in. Single	XC-7300 1/2 in. Duplex
<b>Conduit / Cable Selection Guide</b>				
AC Aluminum	14/2; 14/3; 14/4 12/2; 12/3; 12/4	14/2; 14/3; 14/4 12/2; 12/3; 12/4	10/4 8/2; 8/3 6/2	14/2; 14/3; 14/4 12/2; 12/3; 12/4
Flexible Conduit	3/8	—	1/2	3/8



XC-130



Cat. No.	Description
<b>Snap-In Fitting for MC Cable – Steel</b>	
XC-130	Steel Snap-In Fitting for MC Cable (14-2 + G to 10-3 + G)

## Armoured Cable / Flexible Conduit

### Accessories



Cat. No.	Trade Size (in.)		Clamping Range (in.)	
	EMT	Flex.	Min.	Max.
<b>E.M.T / Flex. Couplings (Zinc Alloy)</b>				
CI5153	1/2	3/8	0.17	0.63
CI5154		1/2	0.75	0.95
TX-212	3/4	3/4	0.78	1.20



Cat. No.	Dimensions (in.)		Hole Size (in.)	Suggested Application AC90 (BX)	Flex. Conduit (in.)
	H	W			
<b>Cable Straps (Aluminum)</b>					
CI0	0.44	0.63	3/16	14/2	—
CI1	0.50	0.56	3/16	12/2-10/2; 14/3-12/3; 14/4	5/16
CI2	0.50	0.63	3/16	10/3; 12/4	3/8
CI3	0.57	0.68	3/16	10/2; 10/3; 12/4	—
CI4	0.81	1.06	3/16	6/2; 6/3; 8/4	1/2
CI5	1.06	1.25	7/32	4/2-2/2; 4/3-2/3; 6/4-4/4	3/4
<b>Cable Staples (Galvanized Steel)</b>					
CIS-3	0.49	0.70	—	14/2-12/2; 14/3-12/3	5/16
CIS-4	0.76	0.86		14/2-8/2; 14/3-8/3; 14/4-10/4	3/8, 7/16

CIS-3 / CIS-4



CI38



Cat. No.	Trade Size (in.)	Max. Flex. Conduit Dia. (in.)	Hole Size (in.)
<b>Flexible Conduit Strap (Galvanized Steel)</b>			
CI38	3/8	0.61	3/16

CI7538

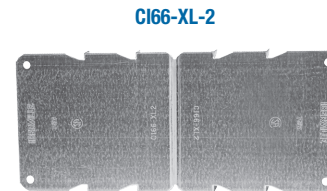
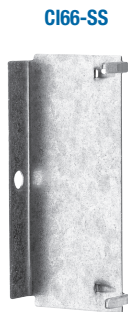
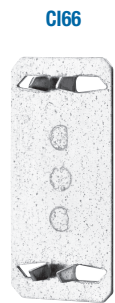


Cat. No.	Max. Flex. Conduit Dia. (in.)	Hole Size (in.)
<b>One Hole Double Sided Strap (Galvanized Steel)</b>		
CI7538*	1.05	3/16

\* Any combination of 3/8 in., 1/2 in. and 3/4 in. EMT, rigid conduit, flexible conduit or teck cables

## Armoured Cable / Flexible Conduit

### Accessories



Cat. No.	Application
<b>Protector Plates (Galvanized Steel)</b>	
<b>CI66</b>	For wood stud
<b>CI66-FPP</b>	For forense
<b>CI66-PPH</b>	For exterior wall, in front of wood stud
<b>CI66-SS</b>	For metal stud
<b>CI66-T</b>	For wood stud
<b>CI66-XL</b>	
<b>CI66-XL-2</b>	

As required by CEC rules 12-516 and 12-616

**IT-100-SC**



Cat. No.	AC Cable Size	Size	Qty per Packaging
<b>Anti-Short Bushings</b>			
<b>IT-100-SC</b>	14/2, 14/3, 1/2	0	35
<b>IT-101</b>	14/4, 12/3, 6/1, 4/1	1	35
<b>IT-102</b>	12/4, 10/2, 10/3, 2/1	2	35
<b>IT-103</b>	10/4, 8/2, 8/3, 1/1	3	20
<b>IT-104</b>	8/4, 6/2, 6/3, 4/2, 4/3, 6/4	4	16