

Gauging Information for Standard Hex Dies

Die Code	TBM6H	Blackburn and T&B 12, 14- & 15-Ton Tools Colour Coded Dies	21940 Dies	Hex Gaging
Red	6 ton 21	B71CH	—	.191-.207
Blue	6 ton 24	B73CH	—	.222-.234
27	—	—	11330	.262-.268
Grey	6 ton 29	B74CH	11401	.282-.294
32	—	—	11332	.329-.335
Brown	6 ton 33	B75CH	11402	.326-.337
35	—	—	*11403	.353-.359
Green	6 ton 37	B05CH	11333	.369-.383
40	—	—	*11404	.397-.403
42	—	15508F	11334	.409-.423
Pink	6 ton 42	B06CHI	—	.409-.423
Black	6 ton 45	B08CH	11405	.445-.459
Orange	6 ton 50	B09CH	11406	.494-.506
Olive	—	B09CH	11407	.535-.553
Purple	6 ton 54	B09CH	—	.535-.553
57	—	—	—	.585-.591
58	—	—	11338	.585-.591
60	6 ton 60	—	11408	.587-.605
Yellow	6 ton 62	B06CH	11340	.613-.631
White	6 ton 66	B10CHI	11409	.657-.675
66H	—	—	—	.657-.675
Red	—	B11CH	11363	.707-.725
Red	6 ton 71	B11CH	—	.707-.725
Blue	6 ton 76	B11CH	11410	.751-.769
76H	—	—	—	.751-.769
78	—	—	11306	.751-.769
80	6 ton 80	—	11411	.790-.802
—	—	—	15517	.790-.802
83	—	—	*11370	.825-.831

* Obsolete, consult your Regional Sales Office for availability.
Gauges may be ordered from T&B Tool Service.

Gauging Information for Standard Hex Dies

Die Code	TBM6H	T&B 14- & 15-Ton Tools Dies	21940 Dies	Hex Gaging
87	—	—	11423	.861-.879
Brown	6 ton 87	B12CH	—	.861-.879
94	—	—	11364	.935-.953
94H	—	—	—	.935-.953
96	—	—	11304	.959-.977
96H	—	—	—	.959-.977
99	—	—	11424	.979-.997
99H	—	—	—	.979-.997
100	—	—	11365	1.005-1.011
106A	—	—	—	1.049-1.071
Black	—	B39CH	—	1.049-1.071
107	—	—	11425	1.064-1.076
107H	—	—	—	1.064-1.076
112	—	—	11426	1.118-1.131
112H	—	—	—	1.118-1.131
115	—	—	11308	1.141-1.163
115H	—	—	—	1.141-1.163
125	—	—	11416	1.239-1.261
125H	—	—	—	1.239-1.261
126	—	—	11443	1.247-1.253
130	—	—	11417	1.299-1.305
138	—	—	11366	1.377-1.383
140	—	—	11418	1.369-1.391
140H	—	—	—	1.369-1.391
150	—	—	11419	1.459-1.481
150H	—	—	—	1.459-1.481
160	—	—	11442	1.609-1.615
161	—	—	11420	1.609-1.615
168	—	—	11447	1.684-1.690
175	—	—	11421	1.752-1.744
204	—	—	11448	2.037-2.043
212	—	—	11449	2.120-2.126
214	—	—	11337	2.140-2.146

Gauges may be ordered from T&B Tool Service.

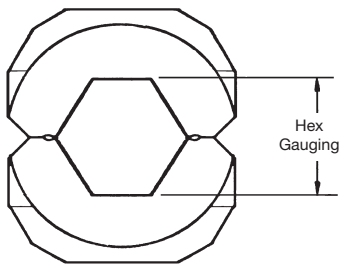


Fig. 2

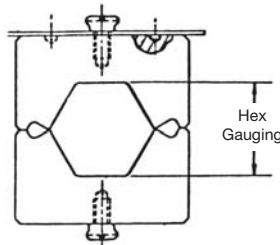


Fig. 1

Installing Dies

Insert Dies for TBM6H Hydraulic Head and Type OD Tools



Cat. No.	Description or Colour Codes	Cat. No.	Description or Colour Codes
OJB	0	BY37	840 (EEI 11A)
DBL	D	BY55	Wire Cutter (2/0 max.)
BY39	510 Hex (non-bow)	BY63	Orange (Nicopress)
BY41	635 Hex (non-bow)	BY65	Plum
BY43	747 Hex (non-bow)	BY15C*	7/32 Red
BY45	T	BY17C*	1/4 Blue
BY47	K	BY19C*	5/16 Grey
BY49	B	BY21C*	3/8 Brown
BY51	J	BY23C*	1/2 Pink
BY53	P	BY24C*	1/2-1 Gold
BY13	3/16	BY25C*	9/16 Tan/Orange
BY15*	7/32 (EEI-1 index 236)	BY27C*	11/16 Yellow
BY17	1/4	BY31C*	5/8-1 Olive/Purple
BY19	5/16 (index 161.242)	BY32C*	Ruby
BY21	3/8	BY35C*	781 White
BY23	1/2 (index 163)	BY37C*	840 Red
BY25	9/16	BY28C*	17/32 Black
BY27	11/16	BY53C*	P Green
BY29	19/32	BG1	Canvas Bag for OD58
BY31	5/8-1 (index 165)	ODH1	Insulating Head Cover
BY33	737		
BY35	781		

*Can also be used with OD58 tool.

Installing Dies

Insert Dies for Hydraulic Heads* JB12B, 13100A, TBM14M, TBM14MC, TBM14BSCR, TBM14RH, TBM15I, TBM15BSCR, BPLT14BSCR, BPLT15BSCR



Cat. No.	Description or Colour Codes
B58CS	5/8 Die Set
HO	"O" Die Set
HD	"D" Die Set
HN	"N" Die Set
HU	"U" Die Set
HBKC	BKC
HBKT	BKT
B24EA	EEI 8A
B30EA	EEI 9A
B39EA	EEI 10A
B49EA	EEI 11A (840)
B61EA	EEI 12A
B80EA	EEI 13A
B20AH	EEI14A
B71AH	-
B72AH	-
B73AH	-
B74AH	-

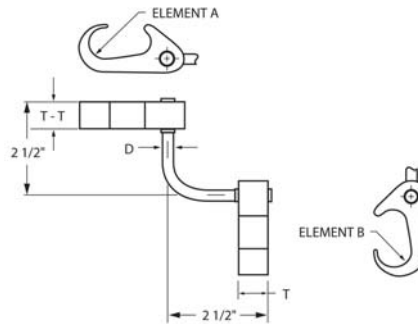
*Adaptor 15500-TB required with T&B 15-ton tools.

Cat. No.	Description or Colour Codes
B75AH	-
B76AH	-
B76SH	-
B06CHI	Pink/Gold 1/0 AWG CU – 2 AWG AL
B08CH	Tan/Orange 3/0 AWG CU – 1 AWG AL
B09CH	Olive/Purple 4/0 AWG CU – 2/0 AWG AL
B11CH	Red/Blue 350/400 kcmil CU – 250-300 kcmil AL
B10SH	-
B05CH	Green #1 AWG CU – 4 AWG AL
B26CH	Ruby/Yellow 250 kcmil CU, 3/0 AWG AL
B71CH	Red #8 AWG CU – 10 AWG AL
B72CH	Black 2/0 AWG CU
B73CH	Blue #6 AWG CU – 8 AWG AL
B74CH	Grey #4 AWG CU – 6 AWG AL
B75CH	Brown #2 AWG CU
B76CH	Pink 700 kcmil CU – 500 kcmil AL
B10CHI	White 300 kcmil CU – 4/0 AWG AL
B12CHI	Brown 500 kcmil CU – 350 kcmil AL
B36CH	Green 600 kcmil CU – 400 kcmil AL
B39CH	Black 750 kcmil CU – 600 kcmil AL
6024AH	Yellow 900 kcmil CU – 750 kcmil AL
6030H	No colour 1000 kcmil AL only

Installing Dies

Dies for Figure 6 to 6 — Ground Connectors

Cat. No.	Cable Element A	To Cable Element B	To Ground Rod Element A	To Rebar Element B	Die Selection	
					Element A	Element B
54855L	#6 sol. - #2 str.	#6 sol. - #2 str.	-	-	15501A	15501A
54865L	#1 str. - 250 kcmil		1/2" - 5/8" Rod	3/8" - 1/2" #3 - #4 Rebar	15501A	15G86R
54875L	#2 str. - 250 kcmil	#2 str. - 250 kcmil	5/8" - 3/4" Rod	5/8" - 3/4" #3 - #4 Rebar	15G86R	15G86R
54885L	250 kcmil - 500 kcmil	#6 sol. - #2 str.			15501A	15G126R
54895L		#2 str. - 250 kcmil			15G86R	15G126R
54900L					15G121R	15G121R



Dies for Figure 6 to 6 – Ground Connectors and Cross Reference

Cat. No.	Dies for T&B 14- and 15-Ton Tools		Burdny Tools and dies								
	Element A *	Element B *	Y750		Y45		Y46		A *	B *	
			A *	B *	A *	B *	A *	B *			
54900L	15G121R [3]	15G121R [3]	U1011 [3]	U1011 [3]	S1011 [3]	S1011 [3]	P1011 [3]	P1011 [3]			
54895L	15G86R [1]	15G126R [1]	PU998 or PU998 [1]	U997 [1]	S998 or PU998 [1]	U997 [1]	P998 [1]	U997 [1]	U997 [1]	U997 [1]	
54885L	15501A [1]	15G126R [1]		U-0 or PU998 [1]	S998 [1]	U-0 [1]					U-0 [1]
54875L	15G86R [1]	15G86R [1]	U997 [1]	U997 [1]	U997 [1]	U997 [1]	U997 [1]	U997 [1]	U997 [1]	U997 [1]	
54865L	15501A [1]	15G86R [1]		U-0 [1]							U-0 [1]
54855L	15501A [1]	15501A [1]		U-0 [1]							U-0 [1]

Use 15500-TB adaptor for T&B 15-ton tools.

* = Number of crimps

Die Adapters

Cat. No.	Description
15500TB	To be used with TBM15I tool only

Installation Dies for Figure 6 and Figure 8 — Ground Connectors

Cat. No.	Cable Element A	To Cable Element B	To Ground Rod Element B	To Rebar Element B	Die Selection	
					Element A	Element B
54855L	#6 Sol. - #2 Str.	#6 Sol. - #2 Str.	-	-	15501A	15501A
54865L	#1 Str. - 250 kcmil	#6 Sol. - #2 Str.	1/2" - 5/8" Rod	3/8" - 1/2" #3 - #4 Rebar	15G86R	15501A
54875L	#2 Str. - 250 kcmil	#2 Str. - 250 kcmil	1/2" - 5/8" Rod	3/8" - 1/2" #3 - #4 Rebar	15G86R	15G86R
54885L	250 kcmil - 500 kcmil	#6 Sol. - #2 Str.	5/8" - 3/4" Rod	5/8" - 3/4" #5 - #6 Rebar	15G126R	15501A
54895L	250 kcmil - 500 kcmil	#2 Str. - 250 kcmil	5/8" - 3/4" Rod	5/8" - 3/4" #5 - #6 Rebar	15G126R	15G86R
54900L	250 kcmil - 500 kcmil	#2 Str. - 250 kcmil	5/8" - 3/4" Rod	5/8" - 3/4" #5 - #6 Rebar	15G121R	15G121R

Dies for Figure 6 — Ground Connectors and Cross Reference

Cat. No.	Dies for T&B 14- and 15-Ton Tools *	Burdny Tools and dies			
		Y750 *	Y45 *	Y46 *	
54900	15G121R 3	U1011 3	S1011 3	P1011 3	
54895	15G126R 1	PU998 1	PU996 or S998 1	PU996 or S998 1	
54890					
54885	15501A 1	U0 1	U0 1	U0 1	
54875					
54865CK	15G86R 1	997 1	U997 1	U997 1	
54860					
54855	15G86R 1				

Use 15500-TB adaptor for T&B 15-ton tools.

* = Number of crimps

Dies for Figure 8 — Ground Connectors and Cross Reference

Cat. No.	Cable Range	Dies for T&B 14- and 15-Ton Tools *	Burdny Tools and dies			
			Y750 *	Y45 *	Y46 *	
GR1-300500*	300-500 kcmil	15G121R 2	U1011 2	S1011	P1011 2	
GR34-300500 & TP*			PU998 1	S1012 or PU998 1	P1011 2 or PU998 1	
GR58-30050 & TP			U1011 2	S1011 S1012 or PU998 1		
GR1-40250*	4/0 AWG-250 kcmil		PU998 1	S1012 or PU998 1	P1011 2 or PU998 1	
GR34-40250 & TP*			U1011 2	S1011 S1012 or PU998 1		
GR58-40250 & TP			PU998 1	S1012 or PU998 1		
GR12-40250 & TP	2 AWG-2/0 AWG	U1011 2	S1011 S1012 or PU998 1	P1011 2 or PU998 1		
GR1-202*		PU998 1	S1012 or PU998 1			
GR34-202 & TP						
GR58-202 & TP						
GR12-202 & TP						

Optional ground rod knurling die for TBM 14- and 15-ton tools: 15508.

Use 15500-TB adaptor for T&B 15-ton tools.

Optional ground rod knurling tool: 240-31565-94.

*Use 15-ton tool only.

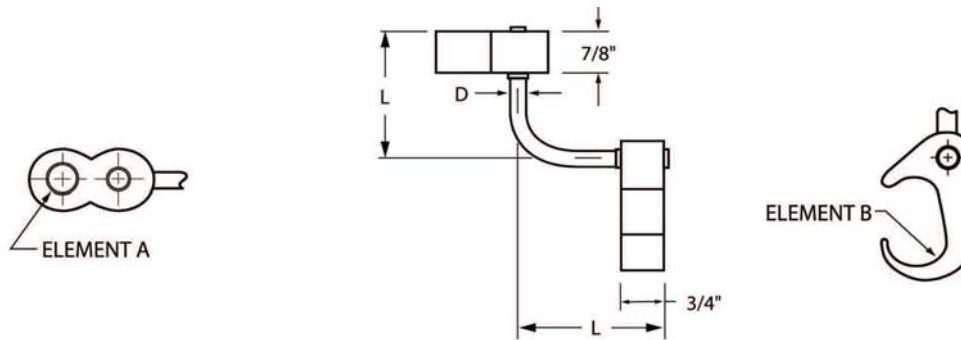
* = Number of crimps

Dies for Figure 6 to 8 — Ground Connectors and Cross Reference

Cat. No.	Dies for T&B 14- and 15-Ton Tools		Burdly Tools and dies						
	Element A *	Element B *	Y750		Y45		Y46		
			A *	B *	A *	B *	A *	B *	
54920LR100	15G121R	15G126R [1]	U1011 [2] or PU998 [1]	U1011 [2] or PU998 [1]	S1011 [2] or PU998 [1]	U1011 [2] or PU998 [1]	P1011 [2] or PU998 [1]	U1011 [2] or PU998 [1]	
54910LR100	15G121R	15G86R [1]		U997 [1]		U997 [1]		U997 [1]	
54900L34 & TP	15G121R	115G126R [1]		U1011 [2] or PU998 [1]		U1011 [2] or PU998 [1]		U1011 [2] or PU998 [1]	U1011 [2] or PU998 [1]
54875L34 & TP	15G121R	15G86R [1]		U997 [1]		U997 [1]		U997 [1]	U997 [1]
54895LR58 & TP	15G121R	15G126R [1]		U1011 [2] or PU998 [1]		S998 [1] or PU998 [1]		S998 [1] or PU998 [1]	P998 [1] or PU998 [1]
54865L58 & TP	15G121R	15G86R [1]				U997 [1]		U997 [1]	U997 [1]
54885LR12 & TP	15G121R	15G126R [1]				S998 [1] or PU998 [1]		S998 [1] or PU998 [1]	P998 [1] or PU998 [1]
54855LR12 & TP	15G121R	15G86R [0]				U997 [1]		U997 [1]	U997 [1]

Optional ground rod knurling die for TBM 14- and 15-ton tools: 15508.
Use 15500-TB adaptor for T&B 15-ton tools.
Optional ground rod knurling tool: 240-31565-94.

* = Number of crimps



Dies for EZ-Ground® C-Taps and Cross Reference

Cat. No.	Dies for T&B 14- and 15-Ton Tools		Burdly Tools and dies		
		*	Y750	Y45	Y46
CTP500500	15G121R	[3]	U1011 [3]	S1011 [3]	P1011 [3]
CTP500250	15G121R	[2]	U1011 [2]	S1011 [2]	P1011 [2]
CTP50020		[1]	U997 [1]	U997 [1]	U997 [1]
CTP250250	15G86R	[1]	U997 [1]	U997 [1]	U997 [1]
CTP25020	15501A	[1]	U-0 [1]	U-0 [1]	U-0 [1]
CTP2020		[1]	U-0 [1]	U-0 [1]	U-0 [1]
CTP202		[1]	U-C [1]	U-C [1]	U-C [1]
CTP22*	HBKC	[1]	U-C [1]	U-C [1]	U-C [1]

Cat. No. 15500-TB adaptor required if using T&B 15-ton tools with 155XX dies series.
*#6 AWG branch must be doubled.

* = Number of crimps

Installing Dies

Cable Slicing Die Sets



- Cut copper and aluminum insulated cable sizes from #8 AWG through 500 kcmil
- Produce clean, squared-end cuts which eliminates extra trimming of conductor strands

Cat. No.	Maximum Cable Size	Tools	Pkg. Qty
BY55	2/0	TBM6H, BPLT6BSCR, BPLT6500BSCR	1
40CS	4/0	TBM14M, 13100A and TBM14BSC	
156CS	500 kcmil	TBM15I and TBM15BSCR	

Installation Dies and Tools

Knurling Tool

Cat. No.	Description
240-31565-94	Hand knurling tool for all ground rods

