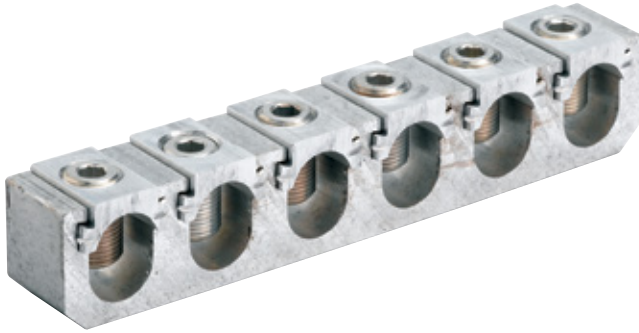


Pedestal connectors and covers

Aluminum lay-in pedestal connectors



Effortlessly install or remove large, stiff cables in confined areas.

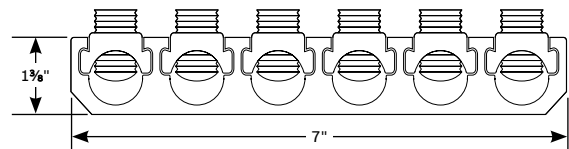
- Cables are easily placed into the keeper slot
- Minimizes the hassle and hazards of having to force cables into the closed cable ports found on conventional mechanical connectors
- Saves time and labor
- Requires only a cable stripper and Allen hex wrench – no crimping tools or dies or other special tools are needed for installation
- Dual-rated for use with aluminum or copper cable
- Ball-bottom screws ensure even force distribution in the cable/connector interface

ABCK series

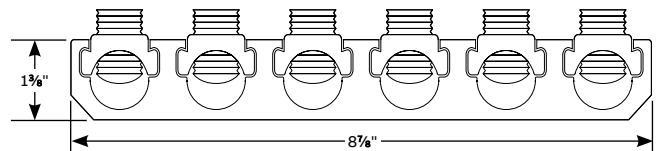
Cat. no.	Conductor range (AWG or kcmil)	Outlets
ABCK 6350	#6–350	6
ABCK 6600	#2–600	6
ABCK 6600 DS*	#2–600	6

* "-DS" suffix indicates double set screws.

Diagrams



ABCK 6350



ABCK 6600

Pedestal connectors and covers

Aluminum set-screw bar pedestal connectors – Single-line bar



ABC 4350

Available with up to eight outlets for aluminum or copper conductors.

- Dual-rated to accept aluminum or copper conductors
- Ball-bottom screws ensure maximum conductor contact pressure and break up interstrand oxides
- Meets or exceeds ANSI C119.4 specifications

Single-line bar

Cat. no.	Outlets	Length (in.)	Boot number	Cable range (AWG or kcmil)
ABC 240	2	1 ¹¹ / ₁₆	BB 10	#6–250
ABC 340	3	2 ⁹ / ₁₆	BB 10	#6–250
ABC 440	4	3 ⁷ / ₁₆	BB 10	#6–250
ABC 540	5	4 ⁵ / ₁₆	BB 11	#6–250
ABC 640	6	5 ³ / ₁₆	BB 11	#6–250
ABC 740	7	6 ¹ / ₁₆	BB 12	#6–250
ABC 840	8	6 ¹⁵ / ₁₆	BB 12	#6–250
ABC 2350	2	2	BB 10	#12–350
ABC 3350	3	3	BB 10	#12–350
ABC 4350	4	4	BB 10	#12–350
ABC 5350	5	5	BB 11	#12–350
ABC 6350	6	6	BB 11	#12–350
ABC 7350	7	7	BB 12	#12–350
ABC 8350	8	8	BB 12	#12–350

Note: For oxide-inhibitor option, add “-C” suffix to the catalog number.
For street light-outlet option, add “-SL” suffix to the catalog number.
For insulating covers, see page 59.
For special applications, please consult your ABB representative.

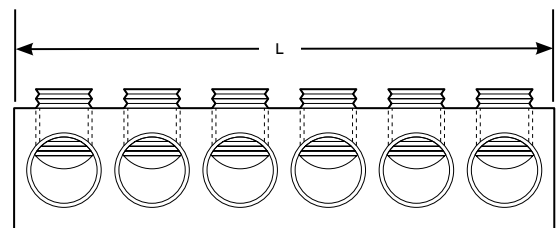
Cat. no.	Outlets	Length (in.)	Boot number	Cable range (AWG or kcmil)
ABC 2500	2	2 ¹ / ₁₆	BB 10	#6–500
ABC 3500	3	3 ¹ / ₁₆	BB 10	#6–500
ABC 4500	4	4 ¹ / ₁₆	BB 11	#6–500
ABC 5500	5	5 ¹ / ₁₆	BB 11	#6–500
ABC 6500	6	6 ¹ / ₁₆	BB 12	#6–500
ABC 7500	7	7 ¹ / ₁₆	BB 14	#6–500
ABC 8500	8	8 ¹ / ₁₆	BB 14	#6–500
ABC 2750	2	2 ³ / ₄	BB 10	1/0–750
ABC 3750	3	4 ³ / ₁₆	BB 13	1/0–750
ABC 4750	4	5 ⁹ / ₁₆	BB 13	1/0–750
ABC 5750	5	7	BB 12	1/0–750
ABC 6750	6	8 ³ / ₈	BB 14	1/0–750
ABC 7750	7	9 ¹³ / ₁₆	BB 15	1/0–750
ABC 8750	8	11 ³ / ₁₆	BB 15	1/0–750

01 For EZ Torque shear-head screws supplied in all outlets, add “-TS” suffix to the catalog number.



01

Diagram



Pedestal connectors and covers

Aluminum set-screw bar pedestal connectors – Double-row bar



High-strength aluminum alloy maintains constant bolting pressure on conductors.

- Dual-rated to accept aluminum or copper conductors
- Ball-bottom screws ensure maximum conductor contact pressure and break up interstrand oxides
- Meets or exceeds ANSI C119.4 specifications

Double-row bar

Cat. no.	Outlets	Length (in.)	Width (in.)	Boot no.	Cable range (AWG or kcmil)
ABC 40-22	4	1 ⁵ / ₈	2	BB 17	#6-250
ABC 40-33	6	2 ⁷ / ₁₆	2	BB 17	#6-250
ABC 40-44	8	3 ³ / ₁₆	2	FB 33*	#6-250
ABC 350-22	4	2 ¹ / ₈	2 ¹ / ₂	BB 17	#12-350
ABC 350-33	6	3	2 ¹ / ₂	FB 33*	#12-350
ABC 350-44	8	3 ¹⁵ / ₁₆	2 ³ / ₈	FB 33*	#12-350
ABC 500-22	4	2 ¹ / ₁₆	2 ³ / ₄	FB 33*	#6-500
ABC 500-33	6	3 ¹ / ₁₆	2 ³ / ₄	FB 33*	#6-500
ABC 500-44	8	4 ¹ / ₁₆	2 ³ / ₄	-**	#6-500
ABC 750-22	4	2 ³ / ₄	3 ¹ / ₄	-**	1/0-750
ABC 750-33	6	4 ³ / ₁₆	3 ¹ / ₄	-**	1/0-750
ABC 750-44	8	5 ⁹ / ₁₆	3 ¹ / ₄	-**	1/0-750

* EPDM Flexi-Boot, see page 59.

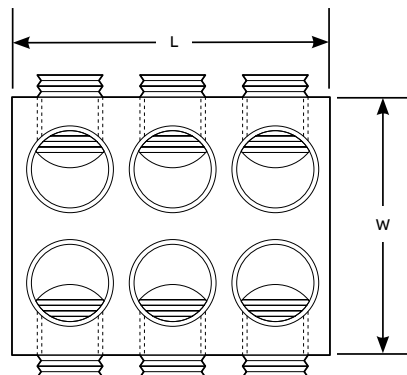
** For other insulating covers, please consult your ABB representative.

Note: For oxide-inhibitor option, add "-C" suffix to the catalog number.

For street light-outlet option, add "-SL" suffix to the catalog number.

For special applications, please consult your ABB representative.

Diagram



Pedestal connectors and covers

Aluminum pedestal connectors



ZVB 5053

Insulated and uninsulated pedestal connectors with up to 10 outlets.

- Compact Zeebar® design doubles cable capacity and reduces footprint
- ZVB series features clear PVC encapsulation to enable safe installations and disconnects – and provide insulation
- Easy to install – all screws are on top, and a $\frac{5}{16}$ " hex wrench is all you need
- Dual-rated to accept aluminum or copper conductors
- Ball-bottom screws ensure maximum conductor contact pressure and break up interstrand oxides
- Meets or exceeds ANSI C119.4 specifications

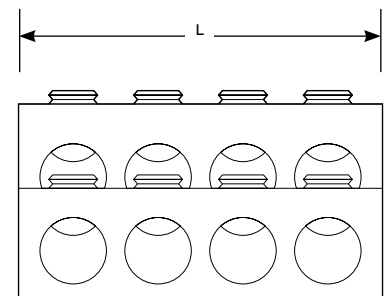
Insulated and uninsulated pedestal connectors

Insulated Cat. no.	Uninsulated Cat. no.	Outlets	L (in.)	Cable range (AWG or kcmil)
ZVB 2023	ZBC 2023	4	2 $\frac{1}{4}$	#12–350
ZVB 3033	ZBC 3033	6	3 $\frac{1}{4}$	#12–350
ZVB 4043	ZBC 4043	8	4 $\frac{1}{4}$	#12–350
ZVB 5053	ZBC 5053	10	5 $\frac{1}{4}$	#12–350
ZVB 2025	ZBC 2025	4	2 $\frac{7}{16}$	#6–500
ZVB 3035	ZBC 3035	6	3 $\frac{9}{16}$	#6–500
ZVB 4045	ZBC 4045	8	4 $\frac{11}{16}$	#6–500
ZVB 5055	ZBC 5055	10	5 $\frac{13}{16}$	#6–500

Note: For oxide-inhibitor option, add "-C" suffix to the catalog number.

For a kit containing one uninsulated and two insulated connectors, add "-K" suffix to the catalog number.

Diagram



Pedestal connectors and covers

Insulated pedestal connector bars — Type PSB-C



Port-separated clear plastic cover provides insulation against accidental contact during installation.

- Bars are constructed of 6061-T6 aluminum alloy for strength and conductivity
- Standard aluminum set screws with 5/16" socket hex spread compressive forces over conductor strands, reduce strand damage, increase interstrand movement, result in lower contact resistance and provide high set-screw torque retention
- Dual-rated for use with aluminum or copper conductors
- Contax® oxide inhibitor standard in all conductor ports
- Meets ANSI C119.4 specifications
- Recognized by RUS

350 series – Insulated PSB bars dual rated (Al-Cu)

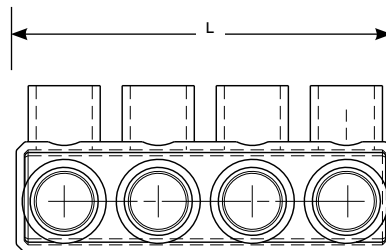
Cat. no.	No. of ports	Cable range (AWG or kcmil)	Length (in.)
PSB4359C	4	#12-350	4.34
PSB6359C	6	#12-350	6.43
PSB8359C	8	#12-350	8.53

500 series – Insulated PSB bars dual rated (Al-Cu)

Cat. no.	No. of ports	Cable range (AWG or kcmil)	Length (in.)
PSB4559C	4	#10-500	4.9
PSB6559C	6	#10-500	7.28
PSB8559C	8	#10-500	9.66

Note: For additional product options, contact your ABB representative.

Diagram



Pedestal connectors and covers

Insulated aluminum pedestal connectors



CLR 6350

See the connector through the transparent insulator.

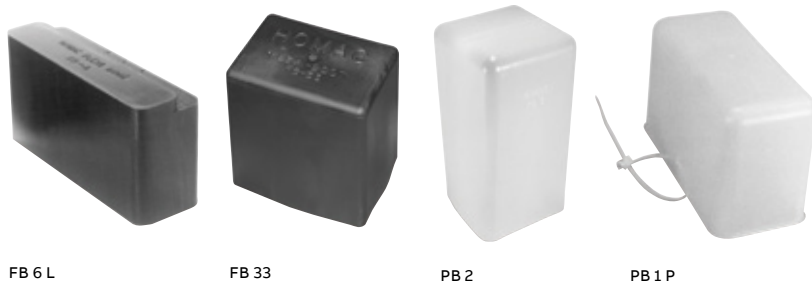
- Integral cover helps retain set screws – no lost parts to worry about
- Fully insulated with clear lock-on PVC cover
- Recognized by RUS

Insulated aluminum pedestal connectors

Cat. no.	Outlets	Wire range (AWG or kcmil)
CLR 340	3	#12-4/0
CLR 440	4	#12-4/0
CLR 540	5	#12-4/0
CLR 640	6	#12-4/0
CLR 3350	3	#12-350
CLR 4350	4	#12-350
CLR 5350	5	#12-350
CLR 6350	6	#12-350

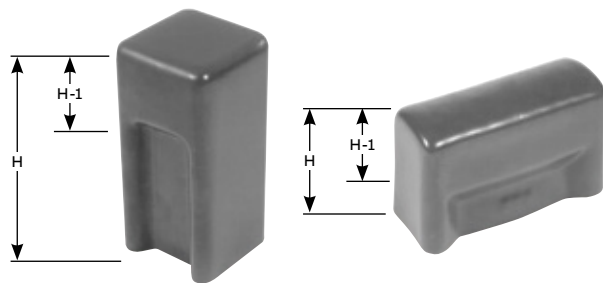
Pedestal connectors and covers

Insulating covers for set-screw bar pedestal connectors



Rugged insulating covers to protect pedestal connectors.

- FB 33 and FB 6 L feature EPDM rubber flexi-boot and flexible locking ribs
- Boot will not crack from cold embrittlement and will not degrade or soften due to heat
- Locking ribs prevent accidental removal of EPDM cover



EPDM rubber FB series

Cat. no.	Height (in.)	Length (in.)	Width (in.)
FB 33	5 $\frac{1}{4}$	4 $\frac{3}{4}$	3 $\frac{3}{8}$
FB 6 L	3 $\frac{1}{2}$	7 $\frac{1}{4}$	2 $\frac{1}{16}$

PVC BB series

Cat. no.	Height (in.)	Height-1 (in.)	Length (in.)	Width (in.)
BB 10	3 $\frac{5}{16}$	1 $\frac{3}{8}$	4 $\frac{1}{8}$	2 $\frac{1}{8}$
BB 11	2 $\frac{7}{8}$	1 $\frac{3}{8}$	5 $\frac{7}{8}$	2 $\frac{1}{8}$
BB 12	3 $\frac{3}{4}$	1 $\frac{7}{8}$	7 $\frac{3}{4}$	2 $\frac{1}{4}$
BB 13	3 $\frac{3}{4}$	1 $\frac{7}{8}$	5 $\frac{15}{16}$	2 $\frac{3}{4}$
BB 14	3 $\frac{3}{4}$	1 $\frac{7}{8}$	8 $\frac{5}{8}$	2 $\frac{3}{4}$
BB 15	3 $\frac{3}{4}$	1 $\frac{7}{8}$	11 $\frac{11}{16}$	2 $\frac{3}{4}$
BB 17	6 $\frac{7}{8}$	2 $\frac{1}{8}$	3 $\frac{1}{8}$	3 $\frac{1}{16}$

Polyethylene PB series

Cat. no.	Height (in.)	Length (in.)	Width (in.)
PB 2	8	4	4 $\frac{3}{16}$
PB 1 P	4	6 $\frac{1}{4}$	2 $\frac{7}{8}$

Note: For cover sizes not listed, please consult your ABB representative.
All boots have a nominal wall thickness of $\frac{1}{8}$ ".
All sizes given for BB and PB series are inside dimensions.