

Fitting Number Selection

SPF624LV06012

Fitting Material	Siderail Depth	Width	Bottom Type	Fitting Type	**Angle	†Nominal Radius
SPF • Pre-Galvanized Fittings	3 • (3-5/8")	06 • (6")	* L • Ladder	HB • Horizontal Bend	30 • (30°)	12 • (12")
SHF • Hot Dip Galvanized Fittings	4 • (4")	09 • (9")	*** V • Ventilated	HT • Horizontal Tee	45 • (45°)	24 • (24")
SSF • Stainless Steel 316	5 • (5")	12 • (12")	**** S • Solid Trough	HX • Horizontal Cross	60 • (60°)	36 • (36")
	6 • (6")	18 • (18")		VI • Vertical Inside Bend	90 • (90°)	48 • (48")
	7 • (7")	24 • (24")		VO • Vertical Outside Bend		
		30 • (30")		VTD • Vertical Tee Down		
		36 • (36")		VTU • Vertical Tee Up		
		42 • (42")		HYR • Horizontal Wye Right		
				HYL • Horizontal Wye Left		
				RT • Horizontal Reducing Tee		
				ET • Horizontal Expanding Tee		
				EX • Horiz. Expand Cross		
				HLR • Horizontal Left Reducer		
				HSR • Horizontal Straight Reducer		
				HRR • Horizontal Right Reducer		
				CS • Cable Support Fitting		

** Angle is required for HB, VI, VO only.

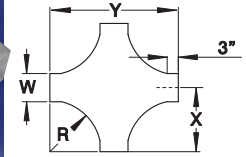
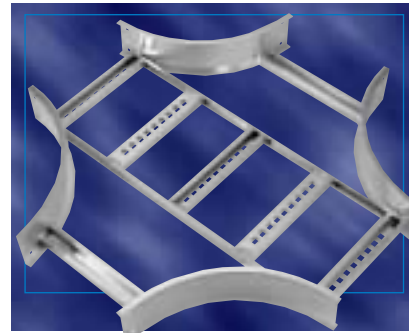
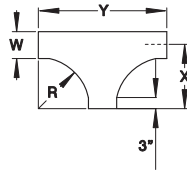
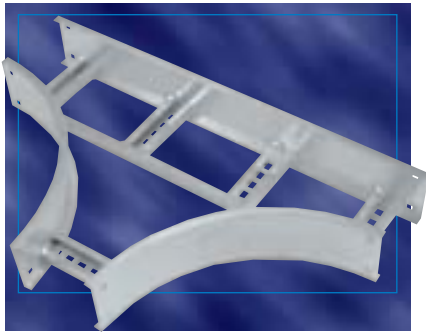
† Radius is not required for the following Fitting Types:
HYR, HYL, HLR, HRR, HSR

* Manufactured with 9" rung spacing measured at the center line of fitting.

*** Manufactured with 4" edge to edge rung spacing measured at the center line of fitting.

**** Manufactured with flat sheet inserted under rungs with 9" rung spacing measured at the center line of fitting.

Horizontal Tee, Cross



Part Numbering System

SPF 4 24 L HT 12

Prefix
SPF, SHF, SSF

Width

Fitting
Type

Nominal
Radius

Siderail
Depth

Bottom
Style

Selection Guide

Prefix: **SPF**(Pre-Galv.),**SHF**(Hot Dip),**SSF**(Stainless Steel)

Inside Tray Widths: **6, 9, 12, 18, 24, 30, 36, 42**

Nominal Radius: **12, 24, 36, 48**

Bottom Styles: **L**- Ladder, **V**- Ventilated, **S**- Solid

Side Rail Depth: **3", 4", 5", 6", 7"**

Dimension / Information

Horizontal TEE				
Nominal Radius R	Width	Catalogue Number	Dimensions	
			X	Y
12	6	Prefix(t)-06-(*)-HT12	15	30
	9	Prefix(t)-09-(*)-HT12	16-1/2	33
	12	Prefix(t)-12-(*)-HT12	18	36
	18	Prefix(t)-18-(*)-HT12	21	42
	24	Prefix(t)-24-(*)-HT12	24	48
	30	Prefix(t)-30-(*)-HT12	27	54
	36	Prefix(t)-36-(*)-HT12	30	60
24	42	Prefix(t)-42-(*)-HT12	33	66
	6	Prefix(t)-06-(*)-HT24	27	54
	9	Prefix(t)-09-(*)-HT24	28-1/2	57
	12	Prefix(t)-12-(*)-HT24	30	60
	18	Prefix(t)-18-(*)-HT24	33	66
	24	Prefix(t)-24-(*)-HT24	36	72
	30	Prefix(t)-30-(*)-HT24	39	78
36	36	Prefix(t)-36-(*)-HT24	42	84
	42	Prefix(t)-42-(*)-HT24	45	90
	6	Prefix(t)-06-(*)-HT36	39	78
	9	Prefix(t)-09-(*)-HT36	40-1/2	81
	12	Prefix(t)-12-(*)-HT36	42	84
	18	Prefix(t)-18-(*)-HT36	45	90
	24	Prefix(t)-24-(*)-HT36	48	96
48	30	Prefix(t)-30-(*)-HT36	51	102
	36	Prefix(t)-36-(*)-HT36	54	108
	42	Prefix(t)-42-(*)-HT36	57	114
	6	Prefix(t)-06-(*)-HT48	51	102
	9	Prefix(t)-09-(*)-HT48	52-1/2	105
	12	Prefix(t)-12-(*)-HT48	54	108
	18	Prefix(t)-18-(*)-HT48	57	114
24	Prefix(t)-24-(*)-HT48	60	120	
30	Prefix(t)-30-(*)-HT48	63	126	
36	Prefix(t)-36-(*)-HT48	66	132	
42	Prefix(t)-42-(*)-HT48	69	138	

Horizontal CROSS				
Nominal Radius R	Width	Catalogue Number	Dimensions	
			X	Y
12	6	Prefix(t)-06-(*)-HX12	15	30
	9	Prefix(t)-09-(*)-HX12	16-1/2	33
	12	Prefix(t)-12-(*)-HX12	18	36
	18	Prefix(t)-18-(*)-HX12	21	42
	24	Prefix(t)-24-(*)-HX12	24	48
	30	Prefix(t)-30-(*)-HX12	27	54
	36	Prefix(t)-36-(*)-HX12	30	60
24	42	Prefix(t)-42-(*)-HX12	33	66
	6	Prefix(t)-06-(*)-HX24	27	54
	9	Prefix(t)-09-(*)-HX24	28-1/2	57
	12	Prefix(t)-12-(*)-HX24	30	60
	18	Prefix(t)-18-(*)-HX24	33	66
	24	Prefix(t)-24-(*)-HX24	36	72
	30	Prefix(t)-30-(*)-HX24	39	78
36	36	Prefix(t)-36-(*)-HX24	42	84
	42	Prefix(t)-42-(*)-HX24	45	90
	6	Prefix(t)-06-(*)-HX36	39	78
	9	Prefix(t)-09-(*)-HX36	40-1/2	81
	12	Prefix(t)-12-(*)-HX36	42	84
	18	Prefix(t)-18-(*)-HX36	45	90
	24	Prefix(t)-24-(*)-HX36	48	96
48	30	Prefix(t)-30-(*)-HX36	51	102
	36	Prefix(t)-36-(*)-HX36	54	108
	42	Prefix(t)-42-(*)-HX36	57	114
	6	Prefix(t)-06-(*)-HX48	51	102
	9	Prefix(t)-09-(*)-HX48	52-1/2	105
	12	Prefix(t)-12-(*)-HX48	54	108
	18	Prefix(t)-18-(*)-HX48	57	114
24	Prefix(t)-24-(*)-HX48	60	120	
30	Prefix(t)-30-(*)-HX48	63	126	
36	Prefix(t)-36-(*)-HX48	66	132	
42	Prefix(t)-42-(*)-HX48	69	138	

(t) Insert side rail depth. (*) Insert bottom style to complete Catalogue Number.
Tees include 2 pairs / Crosses include 3 pairs of splice plates with hardware.