

Accessories, Splice Plates

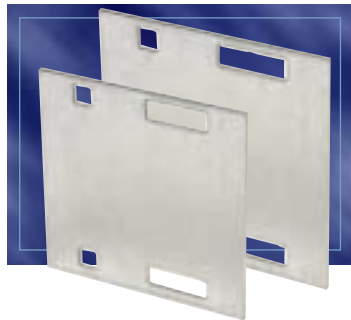
Splice Plate



Packaged in pairs with zinc plated hardware. Provided as standard with each straight and/or fitting.

Material Prefix	Siderail Height	Catalogue Number
SPW	3"	(Prefix)-3-SSP
SHW	4"	(Prefix)-4-SSP
SSW	5"	(Prefix)-5-SSP
	6"	(Prefix)-6-SSP
	7"	(Prefix)-7-SSP

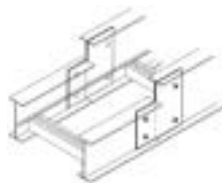
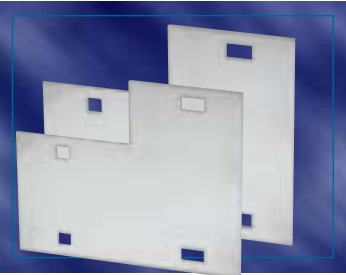
Expansion Splice Plate



Allows for a 1" expansion or contraction of tray system. Packaged in pairs with hardware.

Material Prefix	Siderail Height	Catalogue Number
SPW	3"	(Prefix)-3-ESP
SHW	4"	(Prefix)-4-ESP
SSW	5"	(Prefix)-5-ESP
	6"	(Prefix)-6-ESP
	7"	(Prefix)-7-ESP

Step Down Splice Plate



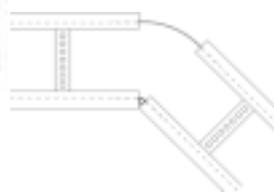
Connects siderails of different heights. Hardware included.

Material Prefix	Catalogue Number
SPW	(Prefix)-(*)-(**)-SDS
SHW	
SSW	

(*) Insert siderail height 1
(**) Insert siderail height 2

Note: Siderail height is greater than siderail height 2.

Horizontal Adjustable Plate



Adjustable hinge plates provide maximum horizontal installation flexibility. Furnished in pairs with hardware.

Material Prefix	Siderail Height	For Tray Widths	Catalogue Number
SPW	3"	6" to 24"	(Prefix)-(*)-24-HSP
SHW	4"	inclusive	
SSW	5"		
	6"		
	7"		
SPW	3"	30" to 42"	(Prefix)-(*)-42-HSP
SHW	4"	inclusive	
SSW	5"		
	6"		
	7"		

(*) Tray height.