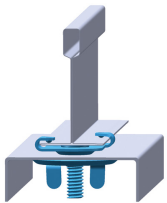


# PT16 Twist Clip for Wall Partition with Wing Nut – PT16



- Fast, easy and secure twist-on installation
- No special tools required
- Designed to reduce scratching of T-grid



|                             |                    |
|-----------------------------|--------------------|
| Part Number                 | PT16               |
| Material                    | Spring Steel Steel |
| Finish                      | CADDY ARMOUR       |
| T-Grid Size                 | 15/16"             |
| Screw Diameter              | 1/4"               |
| Screw Length                | 3/4"               |
| Static Load                 | 50 lb              |
| Standard Packaging Quantity | 100 pc             |
| UPC                         | 78285660016        |

#### WARNING

Pentair products shall be installed and used only as indicated in Pentair's product instruction sheets and training materials. Instruction sheets are available at [erico.pentair.com](http://erico.pentair.com) and from your Pentair customer service representative. Improper installation, misuse, misapplication or other failure to completely follow Pentair's instructions and warnings may cause product malfunction, property damage, serious bodily injury and death and/or void your warranty.

© 2017 Pentair All rights reserved

Pentair, CADDY, CADWELD, CRITEC, ERICO, ERIFLEX, ERITECH and LENTON are owned by Pentair or its global affiliates.

All other trademarks are the property of their respective owners. Pentair reserves the right to change specifications without prior notice.

