

# ACCESSORIES



# GENUINE EXM ACCESSORIES

Choose your EXM accessories



**Commercial  
Lock inserts**  
p.443



**Commercial  
Key & pad locks**  
p.444



**Commercial  
Door handles**  
p.444



**ESEL style  
Locks & inserts**  
p.446



**ESCH style  
Locks & inserts**  
p.445



**Industrial  
Lock & inserts**  
p.450



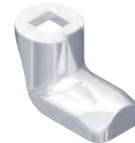
**Industrial  
Key & pad locks**  
p.451



**Industrial  
Door handles**  
p.452



**Industrial  
Lock accessories**  
p.451



**Individual cams,  
Inserts & housings**  
p.453



**Stainless steel  
Locks & inserts**  
p.455



**Stainless steel  
Key & pad locks**  
p.454



**Stainless steel  
Handles**  
p.454



**Cabinet  
Handles**  
p.456



**Electronic  
Lock devices**  
p.457



**Gear  
Boxes**  
p.458



**Mounting  
Feet & stands**  
p.462



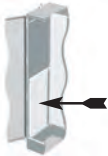
**Cabinet  
Doors**  
p.464



**Cabinet  
Panels**  
p.466



**Swing out  
Panels**  
p.470



**Side  
Panels**  
p.471



**Lights and  
Accessories**  
p.582



**Hinges and  
door accessories**  
p.475



**Door stop  
Kits**  
p.473

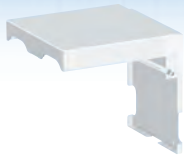


**External  
Drip shields**  
p.474

Data subject to  
change without  
notice.

# GENUINE EXM ACCESSORIES

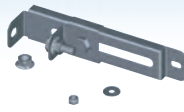
Choose your EXM accessories



**Folding Shelves**  
p.476



**Pole Mounting kits**  
p.476



**Inner panel Depth adjustor**  
p.476



**Print Pockets**  
p.477



**Castor Wheels**  
p.472



**Industrial Eye bolts**  
p.472



**Touch up Paint**  
p.472



**Grounding Accessories**  
p.478



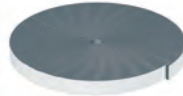
**Hole Plugs**  
p.480



**Hardware Kits**  
p.482



**Gas spring Cylinders**  
p.473



**Self-adhesive Gasket tape**  
p.481



**DIN rails and Accessories**  
p.620



**Pressure Compensation**  
p.616



**Thermostats, Hygrostats**  
p.622



**Enclosure Heaters**  
p.633



**Louver plates, Filters**  
p.591



**Filter fans (Indoor use)**  
p.594



**Filter fans (Outdoor use)**  
p.609



**Top mounted Exhaust filters**  
p.605



**Gland plates instrument mount**  
p.486



**Gland plates Cable entry**  
p.488



**Window kits (Indoor use)**  
p.491



**Window kits (Outdoor use)**  
p.490



**Washdown Hood (Outdoor Use)**  
P. 592



Data subject to change without notice.

# COMMERCIAL DOOR LOCKS AND HANDLES

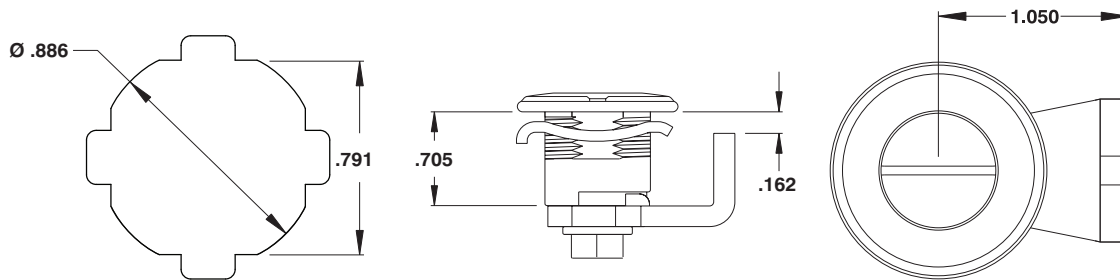
## Commercial door locks - 880 SCQCOM series

The **880 SCQCOM** series door accessories were designed to fit EXM commercial enclosures. A full range of accessories are available to accommodate a variety of applications.

These accessories include :

- 14 types of lock inserts (p.437)
- Key lock, padlock and combination lock provisions (p.438)
- Operating handles (p.438)
- ¼ turn lock dust cap (p.438)

Locking mechanisms can be ordered as complete units or in parts. Parts include individual inserts, cams and housings. The SCQCOM series was designed for use with the 1100 series.



Available accessories, amongst others :



**Lock inserts**  
p.443



**Key locks**  
p.444



**Combination locks**  
p.444



**Padlocks**  
p.444



**'L' handles**  
p.444



**'T' handles**  
p.444



**Wing handles**  
p.444



**Padlock wing**  
p.444



**Padlockable handle**  
p.444



**Dust cap**  
p.443

The 880 SCQCOM accessories are to be used with these enclosure series, amongst others :



**1100 CM**



**1100 E †**



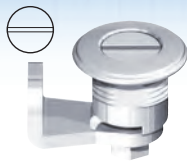
**1100 TC**

† These quarter-turn locks are only compatible with the rectangular dimensions of the 1100 E series. (see p.204)

Data subject to change without notice.

# COMMERCIAL DOOR LOCKS AND HANDLES

## Tool operated locking mechanisms, commercial



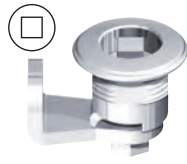
### Slot 2 X 4mm lock

CATALOG # : 880 SCQCOM-SL  
 KEY NUMBER : None  
 Key included? : N/A  
 Material : Steel/Zinc Cast  
 For use with : 1100 CM, 1100 TC  
 1100 E (see p.204)



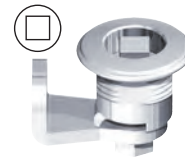
### Square 6mm

CATALOG # : 880 SCQCOM-SQ6  
 KEY NUMBER : K-SQ6  
 Key included? : No  
 Material : Steel/Zinc Cast  
 For use with : 1100 CM, 1100 TC  
 1100 E (see p.204)



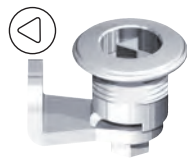
### Square 7mm

CATALOG # : 880 SCQCOM-SQ7  
 KEY NUMBER : K-SQ7  
 Key included? : No  
 Material : Steel/Zinc Cast  
 For use with : 1100 CM, 1100 TC  
 1100 E (see p.204)



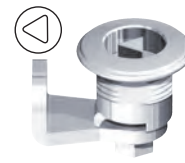
### Square 8mm

CATALOG # : 880 SCQCOM-SQ8  
 KEY NUMBER : K-SQ8  
 Key included? : No  
 Material : Steel/Zinc Cast  
 For use with : 1100 CM, 1100 TC  
 1100 E (see p.204)



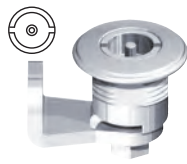
### Triangular 7mm

CATALOG # : 880 SCQCOM-TR7  
 KEY NUMBER : K-TR7  
 Key included? : No  
 Material : Steel/Zinc Cast  
 For use with : 1100 CM, 1100 TC  
 1100 E (see p.204)



### Triangular 8mm

CATALOG # : 880 SCQCOM-TR8  
 KEY NUMBER : K-TR8  
 Key included? : No  
 Material : Steel/Zinc Cast  
 For use with : 1100 CM, 1100 TC  
 1100 E (see p.204)



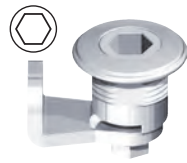
### Double bit 3mm

CATALOG # : 880 SCQCOM-DB3  
 KEY NUMBER : K-DB3  
 Key included? : No  
 Material : Steel/Zinc Cast  
 For use with : 1100 CM, 1100 TC  
 1100 E (see p.204)



### Double bit 5mm

CATALOG # : 880 SCQCOM-DB5  
 KEY NUMBER : K-DB5  
 Key included? : No  
 Material : Steel/Zinc Cast  
 For use with : 1100 CM, 1100 TC  
 1100 E (see p.204)



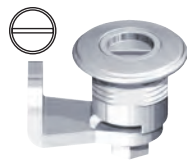
### Hexagon 10mm

CATALOG # : 880 SCQCOM-HX  
 KEY NUMBER : K-HX  
 Key included? : No  
 Material : Steel/Zinc Cast  
 For use with : 1100 CM, 1100 TC  
 1100 E (see p.204)



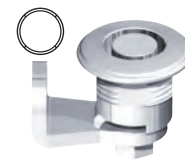
### Hexagon with pin

CATALOG # : 880 SCQCOM-HXP  
 KEY NUMBER : K-HXP  
 Key included? : No  
 Material : Steel/Zinc Cast  
 For use with : 1100 CM, 1100 TC  
 1100 E (see p.204)



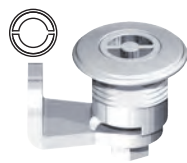
### Slot 2 X 4mm coinproof

CATALOG # : 880 SCQCOM-SLP  
 KEY NUMBER : None  
 Key included? : No  
 Material : Steel/Zinc Cast  
 For use with : 1100 CM, 1100 TC  
 1100 E (see p.204)



### Crown type

CATALOG # : 880 SCQCOM-CW  
 KEY NUMBER : K-CW  
 Key included? : No  
 Material : Steel/Zinc Cast  
 For use with : 1100 CM, 1100 TC  
 1100 E (see p.204)



### Daimler Benz type

CATALOG # : 880 SCQCOM-BZ  
 KEY NUMBER : K-BZ  
 Key included? : No  
 Material : Steel/Zinc Cast  
 For use with : 1100 CM, 1100 TC  
 1100 E (see p.204)



### Anti-vibration double bit

CATALOG # : 880 SCQCOM-AV  
 KEY NUMBER : K-DB3  
 Key included? : No  
 Material : Steel/Zinc Cast  
 For use with : 1100 CM, 1100 TC  
 1100 E (see p.204)



### 1/4 turn lock dust cap

CATALOG # : 880 DDC  
 KEY NUMBER : None  
 Key included? : No  
 Material : Polyamide GF  
 For use with : ES series, 9412  
 ESA, 5412 ESDD...



### Finger pull for 1/4 turn lock

CATALOG # : 880 DFP  
 KEY NUMBER : None  
 Key included? : No  
 Material : Polyamide GF  
 For use with : ES series, 9412  
 ESA, 5412 ESDD...

Items listed above are complete units. Individual parts (inserts, cams, housings) can be ordered. See page 453.

Data subject to change without notice.



# COMMERCIAL DOOR LOCKS AND HANDLES

## Commercial key locks, 1/4 turn locks and handles



### Universal padlock provisions

CATALOG # : 880 PLCHQ375  
 KEY NUMBER : Use 880 PDLK375  
 Key included? : No  
 Material : Stainless steel  
 For use with : ES series, 9412, CH series...



### Weatherproof padlock 3/8"

CATALOG # : 880 PDLK375  
 KEY NUMBER : K-KL1  
 Key included? : Yes  
 Material : Steel/Plastic  
 For use with : 880 PLESQ38  
 General purpose



### 1/4 turn polymer lock

CATALOG # : 880 SCQ1-SL  
 KEY NUMBER : None  
 Key included? : No  
 Material : Polyamide GF  
 For use with : 1100 E (with embossed covers)



### Long 1/4 turn polymer lock

CATALOG # : 880 SCQ1-SLL  
 KEY NUMBER : None  
 Key included? : No  
 Material : Polyamide GF  
 For use with : 1100 E (with square covers)



### 1/4 turn polymer lock

CATALOG # : 880 SCQ1-SLF  
 KEY NUMBER : None  
 Key included? : No  
 Material : Polyamide GF  
 For use with : 1100, 1100 W, 1100 E (flat covers)



### Key lock 'L' handle

CATALOG # : 880 SCQCOM-L  
 KEY NUMBER : K-KL1  
 Key included? : Yes  
 Material : Zinc Cast  
 For use with : 1100 CM, 1100 TC 1100 E



### Padlockable with key lock

CATALOG # : 880 SCQCOM-QLP  
 KEY NUMBER : K-KL1  
 Key included? : Yes  
 Material : Zinc Cast  
 For use with : 1100 CM, 1100 TC 1100 E



### 'L' handle non-locking

CATALOG # : 880 SCQCOM-LN  
 KEY NUMBER : None  
 Key included? : No  
 Material : Polyamide GF/Zinc  
 For use with : 1100 CM, 1100 TC 1100 E



### Padlockable with no key

CATALOG # : 880 SCQCOM-QLPN  
 KEY NUMBER : None  
 Key included? : No  
 Material : Zinc Cast  
 For use with : 1100 CM, 1100 TC 1100 E



### Key lock

CATALOG # : 880 SCQCOM-K  
 KEY NUMBER : K-KL1  
 Key included? : Yes  
 Material : Plated steel  
 For use with : 1100 CM, 1100 TC 1100 E



### Combination lock

CATALOG # : 880 SCQCOM-NL  
 KEY NUMBER : None  
 Key included? : No  
 Material : Plated steel  
 For use with : 1100 CM, 1100 TC 1100 E



### Key lock wing handle

CATALOG # : 880 SCQCOM-WN  
 KEY NUMBER : K-WN  
 Key included? : Yes  
 Material : Polyamide GF/Zinc  
 For use with : 1100 CM, 1100 TC 1100 E



### Key lock 'T' handle

CATALOG # : 880 SCQCOM-T  
 KEY NUMBER : K-T  
 Key included? : Yes  
 Material : Polyamide GF/Zinc  
 For use with : 1100 CM, 1100 TC 1100 E



### Non-locking wing handle

CATALOG # : 880 SCQCOM-WNN  
 KEY NUMBER : None  
 Key included? : no  
 Material : Polyamide GF/Zinc  
 For use with : 1100 CM, 1100 TC 1100 E



### Double padlock wing

CATALOG # : 880 SCQCOM-WNP  
 KEY NUMBER : Padlock  
 Key included? : No  
 Material : Polyamide GF/Zinc  
 For use with : 1100 CM, 1100 TC 1100 E

Data subject to change without notice.

Items listed above are complete units. Individual parts (inserts, cams, housings) can be ordered. See page 453.

# FLANGE-MOUNTED LOCKS

## Door locks for ESCH series enclosures (1/4 turn lock)

The **880 SCQ2 series** door lock accessories are designed to fit ESCH series enclosures. A full range of accessories are available to accommodate a variety of applications.

These accessories include :

- Slot lock in zinc casting and stainless steel.
- Padlock provision in zinc casting and stainless steel.
- 3 insert types, key lock, knob

**A new mounting clip facilitates the installation and removal of the flange mounted 1/4 turn locks.**

This innovative lock design was engineered by EXM and is used only on EXM products.



### Slot lock

**CATALOG # :** 880 SCQ2S  
**KEY NUMBER :** None  
**Key included? :** N/A  
**Material :** Zinc casting  
**For use with :** ESCH series, 1500 CS, 880 HWK



### Stainless steel slot lock

**CATALOG # :** 880 SCQ3S  
**KEY NUMBER :** None  
**Key included? :** N/A  
**Material :** Stainless steel  
**For use with :** ESSCH series, EALCH series...



### Padlock

**Zinc cast # :** 880 SCQ2P  
**For use with :** ESCH series, 1500 CS, 880 HWK  
**Stainless steel #:** 880 SCQ3P  
**For use with :** ESSCH series, EALCH series...



### Wing knob

**CATALOG # :** 880 SCQ2WN  
**KEY NUMBER :** None  
**Key included? :** No tool required  
**Material :** Zinc casting  
**For use with :** ESCH series, 1500 CS, 880 HWK



### Key lock

**CATALOG # :** 880 SCQ2K  
**KEY NUMBER :** K-ESCHK  
**Key included? :** Yes  
**Material :** Zinc casting  
**For use with :** ESCH series, 1500 CS, 880 HWK



### Double bit lock

**CATALOG # :** 880 SCQ2DB  
**KEY NUMBER :** K-DB3  
**Key included? :** No  
**Material :** Zinc casting  
**For use with :** ESCH series, 1500 CS, 880 HWK



### Triangular lock

**CATALOG # :** 880 SCQ2TR  
**KEY NUMBER :** K-TR7  
**Key included? :** No  
**Material :** Zinc casting  
**For use with :** ESCH series, 1500 CS, 880 HWK



### Square lock

**CATALOG # :** 880 SCQ2SQ  
**KEY NUMBER :** K-SQ6  
**Key included? :** No  
**Material :** Zinc casting  
**For use with :** ESCH series, 1500 CS, 880 HWK

## Door locks for ESEL series enclosures (Screw type)

The **880 SCQ2ELS series** door lock accessories are designed to fit ESEL series enclosures. A full range of accessories are available to accommodate a variety of applications.

These accessories include :

- Slot lock in zinc casting and stainless steel.
- A new mounting clip facilitates**

**the installation and removal of the flange mounted screw type locks.** This innovative lock design was engineered by EXM and is used only on EXM products.



### Slot lock

**CATALOG # :** 880 SCQ2ELS  
**KEY NUMBER :** None  
**Key included? :** N/A  
**Material :** Zinc casting  
**For use with :** ESEL series, 5412 ESEL



### Stainless steel slot lock

**CATALOG # :** 880 SCQ3ELS  
**KEY NUMBER :** None  
**Key included? :** N/A  
**Material :** Stainless steel  
**For use with :** ESEL series, 5412 ESEL

Data subject to change without notice.

# CH SERIES DOOR LOCKS AND HANDLES

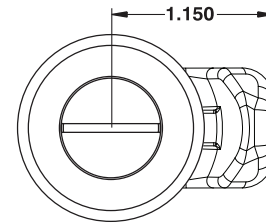
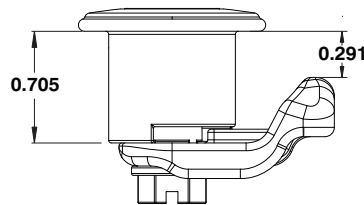
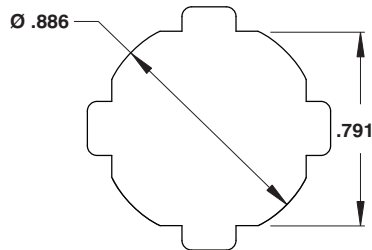
## Door locks - 880 SCQ4CH series

The **880 SCQ4CH** series door accessories were designed to fit EXM 'CH' style industrial enclosures. A full range of accessories are available to accommodate a variety of applications.

These accessories include :

- 14 types of lock inserts (p.447)
- Padlock provisions (p.446)
- Operating handles (p.446)
- ¼ turn lock dust cap (p.447)...

Locking mechanisms can be ordered as complete units or in parts. Parts include individual inserts, cams and housings. For use with 1412 CH, 1412CH...IP, 5412CH.



## Key locks, ¼ turn locks and door locks



### Key lock

**CATALOG # :** 880 SCQ4CH-K  
**KEY NUMBER :** K-KL1  
**Key included? :** Yes  
**Material :** Plated steel  
**For use with :** CH series, 1412 CH, 5412 CH



### Combination lock

**CATALOG # :** 880 SCQ4CH-NL  
**KEY NUMBER :** None  
**Key included? :** No  
**Material :** Plated steel  
**For use with :** CH series, 1412 CH, 5412 CH



### Universal padlock provisions

**CATALOG # :** 880 PLCHQ375  
**KEY NUMBER :** Use 880 PDLK375  
**Key included? :** No  
**Material :** Stainless steel  
**For use with :** ES series, 9412, CH series...



### Weatherproof padlock 3/8"

**CATALOG # :** 880 PDLK375  
**KEY NUMBER :** K-KL1  
**Key included? :** Yes  
**Material :** Steel/Plastic  
**For use with :** 880 PLESQ38  
 General purpose



### Key lock 'L' handle

**1 point lock :** 880 SCQ4CH-L  
**3 point lock :** 885 ESL2A  
**KEY NUMBER :** K-KL1  
**Key included? :** Yes  
**Material :** Zinc Cast  
**For use with :** CH series,



### Key lock 'T' handle

**CATALOG # :** 880 SCQ4CH-T  
**KEY NUMBER :** K-T  
**Key included? :** Yes  
**Material :** Polyamide GF/Zinc  
**For use with :** CH series, 1412 CH, 5412 CH



### 'L' handle non-locking

**CATALOG # :** 880 SCQ4CH-LN  
**KEY NUMBER :** None  
**Key included? :** No  
**Material :** Polyamide GF/Zinc  
**For use with :** CH series, 1412 CH, 5412 CH



### Key lock wing handle

**CATALOG # :** 880 SCQ4CH-WN  
**KEY NUMBER :** K-WN  
**Key included? :** Yes  
**Material :** Polyamide GF/Zinc  
**For use with :** CH series, 1412 CH, 5412 CH



### Padlockable with key lock

**CATALOG # :** 880 SCQ4CH-QLP  
**KEY NUMBER :** K-KL1  
**Key included? :** Yes  
**Material :** Zinc Cast  
**For use with :** 1100 CC, 5300 MC,



### Non-locking wing handle

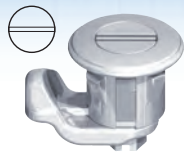
**CATALOG # :** 880 SCQCOM-WNN  
**KEY NUMBER :** None  
**Key included? :** no  
**Material :** Polyamide GF/Zinc  
**For use with :** 1100 CM, 1100 TC 1100 E

Data subject to change without notice.



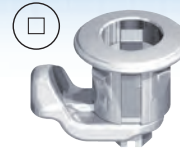
# CH SERIES DOOR LOCKS AND HANDLES

## Tool operated locking mechanisms, commercial



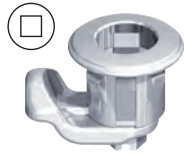
### Slot 2 X 4mm lock

**CATALOG # :** 880 SCQ4CH-SL  
**KEY NUMBER :** None  
**Key included? :** N/A  
**Material :** Steel/Zinc Cast  
**For use with :** CH series,  
 1412 CH, 5412 CH



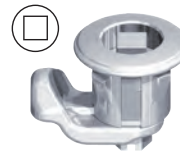
### Square 6mm

**CATALOG # :** 880 SCQ4CH-SQ6  
**KEY NUMBER :** K-SQ6  
**Key included? :** No  
**Material :** Steel/Zinc Cast  
**For use with :** CH series,  
 1412 CH, 5412 CH



### Square 7mm

**CATALOG # :** 880 SCQ4CH-SQ7  
**KEY NUMBER :** K-SQ7  
**Key included? :** No  
**Material :** Steel/Zinc Cast  
**For use with :** CH series,  
 1412 CH, 5412 CH



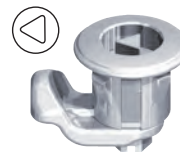
### Square 8mm

**CATALOG # :** 880 SCQ4CH-SQ8  
**KEY NUMBER :** K-SQ8  
**Key included? :** No  
**Material :** Steel/Zinc Cast  
**For use with :** CH series,  
 1412 CH, 5412 CH



### Triangular 7mm

**CATALOG # :** 880 SCQ4CH-TR7  
**KEY NUMBER :** K-TR7  
**Key included? :** No  
**Material :** Steel/Zinc Cast  
**For use with :** CH series,  
 1412 CH, 5412 CH



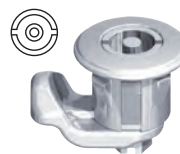
### Triangular 8mm

**CATALOG # :** 880 SCQ4CH-TR8  
**KEY NUMBER :** K-TR8  
**Key included? :** No  
**Material :** Steel/Zinc Cast  
**For use with :** CH series,  
 1412 CH, 5412 CH



### Double bit 3mm

**CATALOG # :** 880 SCQ4CH-DB3  
**KEY NUMBER :** K-DB3  
**Key included? :** No  
**Material :** Steel/Zinc Cast  
**For use with :** CH series,  
 1412 CH, 5412 CH



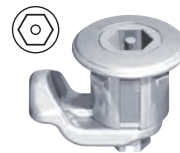
### Double bit 5mm

**CATALOG # :** 880 SCQ4CH-DB5  
**KEY NUMBER :** K-DB5  
**Key included? :** No  
**Material :** Steel/Zinc Cast  
**For use with :** CH series,  
 1412 CH, 5412 CH



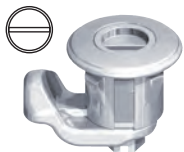
### Hexagon 10mm

**CATALOG # :** 880 SCQ4CH-HX  
**KEY NUMBER :** K-HX  
**Key included? :** No  
**Material :** Steel/Zinc Cast  
**For use with :** CH series,  
 1412 CH, 5412 CH



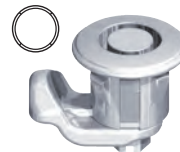
### Hexagon with pin

**CATALOG # :** 880 SCQ4CH-HXP  
**KEY NUMBER :** K-HXP  
**Key included? :** No  
**Material :** Steel/Zinc Cast  
**For use with :** CH series,  
 1412 CH, 5412 CH



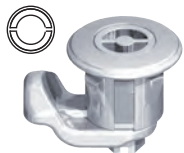
### Slot 2 X 4mm coinproof

**CATALOG # :** 880 SCQ4CH-SLP  
**KEY NUMBER :** None  
**Key included? :** No  
**Material :** Steel/Zinc Cast  
**For use with :** CH series,  
 1412 CH, 5412 CH



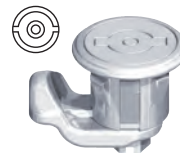
### Crown type

**CATALOG # :** 880 SCQ4CH-CW  
**KEY NUMBER :** K-CW  
**Key included? :** No  
**Material :** Steel/Zinc Cast  
**For use with :** CH series,  
 1412 CH, 5412 CH



### Daimler Benz type

**CATALOG # :** 880 SCQ4CH-BZ  
**KEY NUMBER :** K-BZ  
**Key included? :** No  
**Material :** Steel/Zinc Cast  
**For use with :** CH series,  
 1412 CH, 5412 CH



### Anti-vibration double bit

**CATALOG # :** 880 SCQ4CH-AV  
**KEY NUMBER :** K-DB5  
**Key included? :** No  
**Material :** Steel/Zinc Cast  
**For use with :** CH series,  
 1412 CH, 5412 CH



### 1/4 turn lock dust cap

**CATALOG # :** 880 DDC  
**KEY NUMBER :** None  
**Key included? :** No  
**Material :** Polyamide GF  
**For use with :** ES series, 9412  
 ESA, 5412 ESDD...



### Finger pull for 1/4 turn lock

**CATALOG # :** 880 DFP  
**KEY NUMBER :** None  
**Key included? :** No  
**Material :** Polyamide GF  
**For use with :** ES series, 9412  
 ESA, 5412 ESDD...

Items listed above are complete units. Individual parts (inserts, cams, housings) can be ordered. See page 453.

Data subject to  
change without  
notice.



# CHSS SERIES DOOR LOCKS AND HANDLES

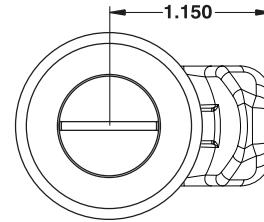
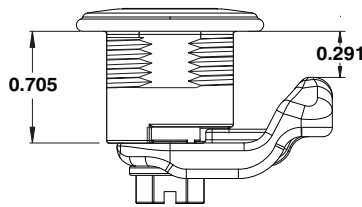
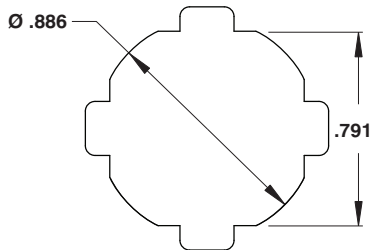
## Door locks - 880 SCQ4CHSS series

The 880 SCQ4CHSS series door accessories were designed to fit EXM 'CH' style industrial enclosures. A full range of accessories are available to accommodate a variety of applications.

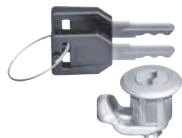
These accessories include :

- 14 types of lock inserts (p.449)
- Padlock provisions (p.448)
- Operating handles (p.448)
- ¼ turn lock dust cap (p.449)...

Locking mechanisms can be ordered as complete units or in parts. Parts include individual inserts, cams and housings. For use with 1412 CH, 1412CH...IP, 5412CH.



## Key locks, pad locks and ¼ turn locks



### Key lock

CATALOG # : 880 SCQ4CH-KSS  
 KEY NUMBER : K-KL1  
 Key included? : Yes  
 Material : Plated steel  
 For use with : CH series, 1412 CH, 5412 CH



### Combination lock

CATALOG # : 880 SCQ4CH-NLSS  
 KEY NUMBER : None  
 Key included? : No  
 Material : Plated steel  
 For use with : CH series, 1412 CH, 5412 CH



### Universal padlock provisions

CATALOG # : 880 PLCHQ375  
 KEY NUMBER : Use 880 PDLK375  
 Key included? : No  
 Material : Stainless steel  
 For use with : ES series, 9412, CH series...



### Weatherproof padlock 3/8"

CATALOG # : 880 PDLK375  
 KEY NUMBER : K-KL1  
 Key included? : Yes  
 Material : Steel/Plastic  
 For use with : 880 PLESQ38 General purpose

## Door handles



### Key lock 'L' handle

1 point lock : 880 SCQ4CH-LSS  
 3 point lock : 885 ESL2A  
 KEY NUMBER : K-KL1  
 Key included? : Yes  
 Material : Zinc Cast  
 For use with : CH series,



### Key lock 'T' handle

CATALOG # : 880 SCQ4CH-TSS  
 KEY NUMBER : K-T  
 Key included? : Yes  
 Material : Polyamide GF/Zinc  
 For use with : CH series, 1412 CH, 5412 CH



### 'L' handle non-locking

CATALOG # : 880 SCQ4CH-LNSS  
 KEY NUMBER : None  
 Key included? : No  
 Material : Polyamide GF/Zinc  
 For use with : CH series, 1412 CH, 5412 CH



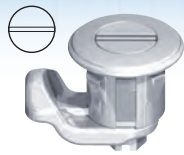
### 'T' handle non-locking

CATALOG # : 880 SCQ4CH-TNSS  
 KEY NUMBER : K-WN  
 Key included? : Yes  
 Material : Polyamide GF/Zinc  
 For use with : CH series, 1412 CH, 5412 CH

Data subject to change without notice.

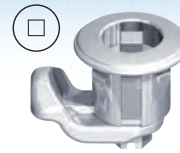
# CHSS SERIES DOOR LOCKS AND HANDLES

## Tool operated locking mechanisms, commercial



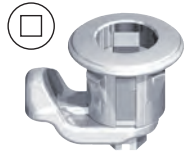
Slot 2 X 4mm lock

CATALOG # : 880 SCQ4CH-SLSS  
 KEY NUMBER : None  
 Key included? : N/A  
 Material : Steel/Zinc Cast  
 For use with : CH series,  
 1412 CH, 5412 CH



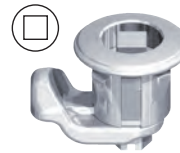
Square 6mm

CATALOG # : 880 SCQ4CH-SQ6SS  
 KEY NUMBER : K-SQ6  
 Key included? : No  
 Material : Steel/Zinc Cast  
 For use with : CH series,  
 1412 CH, 5412 CH



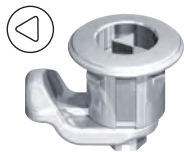
Square 7mm

CATALOG # : 880 SCQ4CH-SQ7SS  
 KEY NUMBER : K-SQ7  
 Key included? : No  
 Material : Steel/Zinc Cast  
 For use with : CH series,  
 1412 CH, 5412 CH



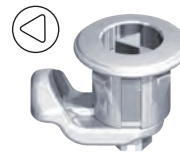
Square 8mm

CATALOG # : 880 SCQ4CH-SQ8SS  
 KEY NUMBER : K-SQ8  
 Key included? : No  
 Material : Steel/Zinc Cast  
 For use with : CH series,  
 1412 CH, 5412 CH



Triangular 7mm

CATALOG # : 880 SCQ4CH-TR7SS  
 KEY NUMBER : K-TR7  
 Key included? : No  
 Material : Steel/Zinc Cast  
 For use with : CH series,  
 1412 CH, 5412 CH



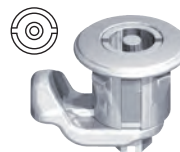
Triangular 8mm

CATALOG # : 880 SCQ4CH-TR8SS  
 KEY NUMBER : K-TR8  
 Key included? : No  
 Material : Steel/Zinc Cast  
 For use with : CH series,  
 1412 CH, 5412 CH



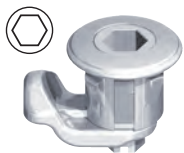
Double bit 3mm

CATALOG # : 880 SCQ4CH-DB3SS  
 KEY NUMBER : K-DB3  
 Key included? : No  
 Material : Steel/Zinc Cast  
 For use with : CH series,  
 1412 CH, 5412 CH



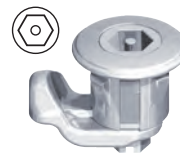
Double bit 5mm

CATALOG # : 880 SCQ4CH-DB5SS  
 KEY NUMBER : K-DB5  
 Key included? : No  
 Material : Steel/Zinc Cast  
 For use with : CH series,  
 1412 CH, 5412 CH



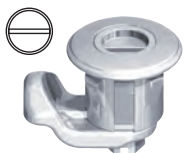
Hexagon 10mm

CATALOG # : 880 SCQ4CH-HXSS  
 KEY NUMBER : K-HX  
 Key included? : No  
 Material : Steel/Zinc Cast  
 For use with : CH series,  
 1412 CH, 5412 CH



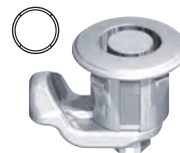
Hexagon with pin

CATALOG # : 880 SCQ4CH-HXPSS  
 KEY NUMBER : K-HXP  
 Key included? : No  
 Material : Steel/Zinc Cast  
 For use with : CH series,  
 1412 CH, 5412 CH



Slot 2 X 4mm coinproof

CATALOG # : 880 SCQ4CH-SLPSS  
 KEY NUMBER : None  
 Key included? : No  
 Material : Steel/Zinc Cast  
 For use with : CH series,  
 1412 CH, 5412 CH



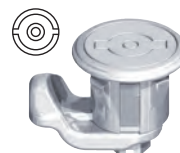
Crown type

CATALOG # : 880 SCQ4CH-CWSS  
 KEY NUMBER : K-CW  
 Key included? : No  
 Material : Steel/Zinc Cast  
 For use with : CH series,  
 1412 CH, 5412 CH



Daimler Benz type

CATALOG # : 880 SCQ4CH-BZSS  
 KEY NUMBER : K-BZ  
 Key included? : No  
 Material : Steel/Zinc Cast  
 For use with : CH series,  
 1412 CH, 5412 CH



Anti-vibration double bit

CATALOG # : 880 SCQ4CH-AVSS  
 KEY NUMBER : K-DB5  
 Key included? : No  
 Material : Steel/Zinc Cast  
 For use with : CH series,  
 1412 CH, 5412 CH

Items listed above are complete units. Individual parts (inserts, cams, housings) can be ordered. See page 453.

Data subject to change without notice.

# ES SERIES DOOR LOCKS AND HANDLES

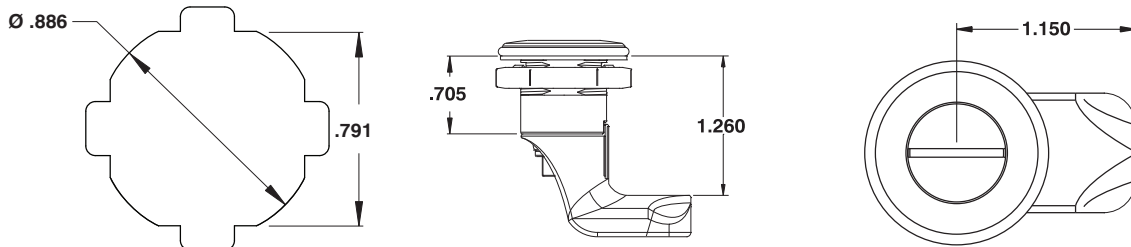
## Industrial door locks - 880 SCQ4 series

The **880 SCQ4** series door accessories were designed to fit EXM 'ES' style industrial enclosures. A full range of accessories are available to accommodate a variety of applications.

These accessories include :

- 14 types of lock inserts (p.451)
- Key lock, padlock and combination lock provisions (p.450)
- Operating handles (p.450)
- ¼ turn lock dust cap (p.451)...

Locking mechanisms can be ordered as complete units or in parts. Parts include individual inserts, cams and housings.



Available accessories, amongst others :



**Lock inserts**  
p.451



**Key locks**  
p.452



**Combination locks**  
p.452



**Padlocks**  
p.452



**'L' handles**  
p.452



**'T' handles**  
p.452



**Wing handles**  
p.452



**Wing padlock**  
p.452



**Dust cap**  
p.451



**Meter Cab. handle**  
p.452

The 880 SCQ4 accessories are to be used with these enclosure series, amongst others :



**5100 ES**  
**5412 ES**



**5100 ESDD**  
**5412 ESDD**



**5412 DDS**



**9412**

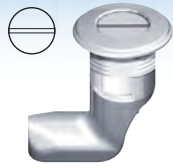


**5412 ESA**

Data subject to change without notice.

# ES SERIES DOOR LOCKS AND HANDLES

Tool operated locking mechanisms, industrial & standard



Slot 2 X 4mm lock

CATALOG # : 880 SCQ4-SL  
KEY NUMBER : None  
Key included? : N/A  
Material : Steel/Zinc Cast  
For use with : ES series, 9412  
ESA, 5412 ESDD...



Square 6mm

CATALOG # : 880 SCQ4-SQ6  
KEY NUMBER : K-SQ6  
Key included? : No  
Material : Steel/Zinc Cast  
For use with : ES series, 9412  
ESA, 5412 ESDD...



Square 7mm

CATALOG # : 880 SCQ4-SQ7  
KEY NUMBER : K-SQ7  
Key included? : No  
Material : Steel/Zinc Cast  
For use with : ES series, 9412  
ESA, 5412 ESDD...



Square 8mm

CATALOG # : 880 SCQ4-SQ8  
KEY NUMBER : K-SQ8  
Key included? : No  
Material : Steel/Zinc Cast  
For use with : ES series, 9412  
ESA, 5412 ESDD...



Triangular 7mm

CATALOG # : 880 SCQ4-TR7  
KEY NUMBER : K-TR7  
Key included? : No  
Material : Steel/Zinc Cast  
For use with : ES series, 9412  
ESA, 5412 ESDD...



Triangular 8mm

CATALOG # : 880 SCQ4-TR8  
KEY NUMBER : K-TR8  
Key included? : No  
Material : Steel/Zinc Cast  
For use with : ES series, 9412  
ESA, 5412 ESDD...



Double bit 3mm

CATALOG # : 880 SCQ4-DB3  
KEY NUMBER : K-DB3  
Key included? : No  
Material : Steel/Zinc Cast  
For use with : ES series, 9412  
ESA, 5412 ESDD...



Double bit 5mm

CATALOG # : 880 SCQ4-DB5  
KEY NUMBER : K-DB5  
Key included? : No  
Material : Steel/Zinc Cast  
For use with : ES series, 9412  
ESA, 5412 ESDD...



Hexagon 10mm

CATALOG # : 880 SCQ4-HX  
KEY NUMBER : K-HX  
Key included? : No  
Material : Steel/Zinc Cast  
For use with : ES series, 9412  
ESA, 5412 ESDD...



Hexagon with pin

CATALOG # : 880 SCQ4-HXP  
KEY NUMBER : K-HXP  
Key included? : No  
Material : Steel/Zinc Cast  
For use with : ES series, 9412  
ESA, 5412 ESDD...



Slot 2 X 4mm coinproof

CATALOG # : 880 SCQ4-SLP  
KEY NUMBER : None  
Key included? : No  
Material : Steel/Zinc Cast  
For use with : ES series, 9412  
ESA, 5412 ESDD...



Crown type

CATALOG # : 880 SCQ4-CW  
KEY NUMBER : K-CW  
Key included? : No  
Material : Steel/Zinc Cast  
For use with : ES series, 9412  
ESA, 5412 ESDD...

Adaptable  
to all



Slam lock

CATALOG # : 880 SCQ4-SLS  
KEY NUMBER : Adaptable to all  
Key included? : No  
Material : Steel/Zinc Cast  
For use with : ES series, 9412  
ESA, 5412 ESDD...



Anti-vibration double bit

CATALOG # : 880 SCQ4-AV  
KEY NUMBER : K-DB5  
Key included? : No  
Material : Steel/Zinc Cast  
For use with : ES series, 9412  
ESA, 5412 ESDD...



1/4 turn lock dust cap

CATALOG # : 880 DDC  
KEY NUMBER : None  
Key included? : No  
Material : Polyamide GF  
For use with : ES series, 9412  
ESA, 5412 ESDD...



Finger pull for 1/4 turn lock

CATALOG # : 880 DFP  
KEY NUMBER : None  
Key included? : No  
Material : Polyamide GF  
For use with : ES series, 9412  
ESA, 5412 ESDD...

Items listed above are complete units. Individual parts (inserts, cams, housings) can be ordered. See page 453.

Data subject to  
change without  
notice.



# ES SERIES DOOR LOCKS AND HANDLES

'ES' style key locks, pad locks and combination locks



## Key lock

**CATALOG # :** 880 SCQ4-K  
**KEY NUMBER :** K-KL1  
**Key included? :** Yes  
**Material :** Plated steel  
**For use with :** ES series, 9412  
 ESA, 5412 ESDD...



## Combination lock

**CATALOG # :** 880 SCQ4-NL  
**KEY NUMBER :** None  
**Key included? :** No  
**Material :** Plated steel  
**For use with :** ES series, 9412  
 ESA, 5412 ESDD...



## Universal padlock provisions

**CATALOG # :** 880 PLCHQ375  
**KEY NUMBER :** Use 880 PDLK375  
**Key included? :** No  
**Material :** Stainless steel  
**For use with :** ES series, 9412, CH series...



## Weatherproof padlock 3/8"

**CATALOG # :** 880 PDLK375  
**KEY NUMBER :** K-KL1  
**Key included? :** Yes  
**Material :** Steel/Plastic  
**For use with :** 880 PLESQ38  
 General purpose



## General purpose padlock

**CATALOG # :** 880 PL  
**KEY NUMBER :** Use padlock  
**Key included? :** No  
**Material :** Plated steel  
**For use with :** ES series, 9412  
 ESA, 5412 ESDD...



## Stainless steel padlock

**CATALOG # :** 880 PLSS  
**KEY NUMBER :** Use padlock  
**Key included? :** No  
**Material :** Stainless steel  
**For use with :** ES series, 9412  
 ESA, 5412 ESDD...

## Industrial door handles



## Key lock 'L' handle

**1 point lock :** 880 SCQ4-L  
**3 point lock :** 885 ESL2A  
**KEY NUMBER :** K-KL1  
**Key included? :** Yes  
**Material :** Zinc Cast  
**For use with :** ES series, 9412



## Padlockable with key lock

**CATALOG # :** 880 SCQ4-QLP  
**KEY NUMBER :** K-KL1  
**Key included? :** Yes  
**Material :** Zinc Cast  
**For use with :** 1100 CC, 5300 MC,



## 'L' handle non-locking

**CATALOG # :** 880 SCQ4-LN  
**KEY NUMBER :** None  
**Key included? :** No  
**Material :** Polyamide GF/Zinc  
**For use with :** ES series, 9412  
 ESA, 5412 ESDD...



## Padlockable with no key

**CATALOG # :** 880 SCQ4-QLPN  
**KEY NUMBER :** None  
**Key included? :** No  
**Material :** Zinc Cast  
**For use with :** ES series, 9412  
 ESA, 5412 ESDD...



## Key lock wing handle

**CATALOG # :** 880 SCQ4-WN  
**KEY NUMBER :** K-WN  
**Key included? :** Yes  
**Material :** Polyamide GF/Zinc  
**For use with :** ES series, 9412  
 ESA, 5412 ESDD...



## Key lock 'T' handle

**CATALOG # :** 880 SCQ4-T  
**KEY NUMBER :** K-T  
**Key included? :** Yes  
**Material :** Polyamide GF/Zinc  
**For use with :** ES series, 9412  
 ESA, 5412 ESDD...



## Non-locking wing handle

**CATALOG # :** 880 SCQ4-WNN  
**Material :** Polyamide GF/Zinc  
**For use with :** ES series, 9412  
 ESA, 5412 ESDD...



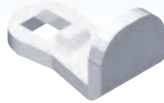
## Padlockable wing handle

**CATALOG # :** 880 SCQ4-WNP  
**KEY NUMBER :** Padlock  
**Key included? :** No  
**Material :** Polyamide GF/Zinc  
**For use with :** ES series, 9412  
 ESA, 5412 ESDD...

Data subject to change without notice.

# CAMS AND INSERTS

## Parts for quarter turn locks - Cams, inserts, housings



### Commercial cam

CATALOG # : 880 SCQCOM-CAM  
 KEY NUMBER : None  
 Key included? : No  
 Material : Steel  
 For use with : Commercial and industrial boxes



### Industrial cam

CATALOG # : 880 SCQ4-CAM  
 KEY NUMBER : None  
 Key included? : No  
 Material : Zinc Cast  
 For use with : 5412 ESA, 5412 ESSA, 5412 ESE



### Cam for 'CH' enclosures

CATALOG # : 880 SCQ4-CAMCH  
 KEY NUMBER : None  
 Key included? : No  
 Material : Zinc Cast  
 For use with : 1500 CH, 1412 CH



### Industrial cam ('ESW')

CATALOG # : 880 SCQ4-CAMW  
 KEY NUMBER : None  
 Key included? : No  
 Material : Zinc Cast  
 For use with : 5412 ESW, 5412 ESSW



### Cam for 'CH' enclosures

CATALOG # : 880 SCQ4-CAMCHP  
 KEY NUMBER : None  
 Key included? : No  
 Material : Zinc Cast  
 For use with : 1500 CH, 1412 CH, 880 PLCHQ375



### Industrial cam ('ES' with padlock)

CATALOG # : 880 SCQ4-CAMWP  
 KEY NUMBER : None  
 Key included? : No  
 Material : Zinc Cast  
 For use with : 5412 ESW, 5412 ESSW, PLESQ375



### Cam for '1100E' enclosures

CATALOG # : 880 SCQ4-CAM-E  
 KEY NUMBER : None  
 Key included? : No  
 Material : Zinc Cast  
 For use with : 1100 E with recessed cover



### Industrial cam

CATALOG # : 889 SCQ4-CAM  
 KEY NUMBER : None  
 Key included? : No  
 Material : Zinc Cast  
 For use with : 9412 enclosures, 5500 DDS

DESCRIPTION	CATALOG NUMBERS FOR INDIVIDUAL INSERTS AND HOUSINGS		
	CHROME PLATED ZINC CAST	STAINLESS STEEL TYPE 304	STAINLESS STEEL TYPE 316
Slot 2 X 4 mm insert	880 ISL	880 ISLSS4	880 ISLSS6
Slot 1,2 X 3 insert	880 ISL2	--	--
Square 6 mm insert	880 ISQ6	880 ISQ6SS4	--
Square 7 mm insert	880 ISQ7	880 ISQ7SS4	880 ISQ7SS6
Square 8 mm insert	880 ISQ8	880 ISQ8SS4	880 ISQ8SS6
Square 8 mm slotted	880 ISQS	--	--
Triangular 7 mm insert	880 ITR7	880 ITR7SS4	880 ITR7SS6
Triangular 8 mm insert	880 ITR8	880 ITR8SS4	880 ITR8SS6
Triangular 9 mm insert	880 ITR9	--	--
Triangular 10 mm insert	80 ITR10	--	--
Double bit 3 mm insert	880 IDB3	880 IDB3SS4	880 IDB3SS6
Double bit 5 mm insert	880 IDB5	880 IDB5SS4	880 IDB5SS6
Hexagon 10 mm insert	880 IHX	--	--
Hexagon insert with pin	880 IHXP	880 IHXPSS4	--
Slot 2 X 4 mm coinproof	880 ISLP	--	--
Crown type insert	880 ICW	--	--
Daimler Benz insert	880 IBZ	--	--
Eastern Europe Ø13	880 IEE	880 IEESS4	--
Fiat type insert	880 IFIAT	--	--
Lock housing	880 SCQH	880 SCQHSS	--

Other inserts, cams and housings available upon request. Call EXM at 1-800-363-2423 for more information.

Data subject to change without notice.



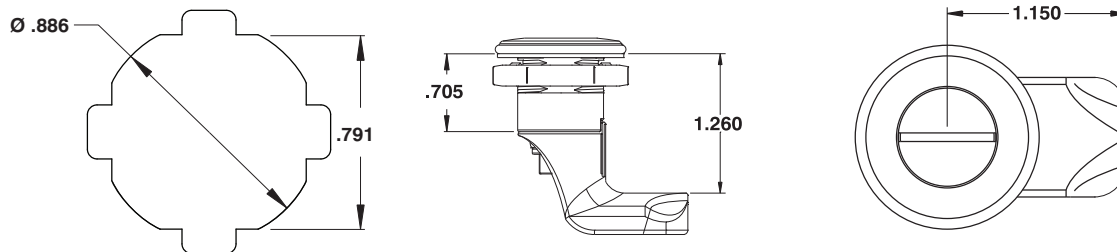
# ESS SERIES DOOR LOCKS AND HANDLES

## Stainless steel industrial door locks - 880 SCQ4SS series

The **880 SCQ4SS** series door accessories were designed to fit EXM 'ESS' style industrial enclosures. A full range of accessories are available to accommodate a variety of applications.

These accessories include :  
 - 7 types of lock inserts (p.455)  
 - Padlock provisions (p.454)  
 - Operating handles (p.454)  
 - ¼ turn lock dust cap (p.455)...

Locking mechanisms can be ordered as complete units or in parts. Parts include individual inserts, cams and housings. For use with 5412 ESS, 5412 ESSP, 5412 SSDD, 9412 SS, 5412 ESSA



## Stainless steel padlock provisions and key locks



### Universal padlock provisions

**CATALOG # :** 880 PLCHQ375  
**KEY NUMBER :** Use 880 PDLK375  
**Key included? :** No  
**Material :** Stainless steel  
**For use with :** ES series, 9412, CH series...



### Padlockable wing handle

**CATALOG # :** 880 SCQ4-WNPSS  
**KEY NUMBER :** Padlock  
**Key included? :** No  
**Material :** Stainless steel  
**For use with :** ESS series, ESSA 9412 SS, SSDD...



### Stainless steel padlock

**CATALOG # :** 880 PLSS  
**KEY NUMBER :** Use padlock  
**Key included? :** No  
**Material :** Stainless steel  
**For use with :** ESS series, ESSA 9412 SS, SSDD...



### Stainless steel key lock

**CATALOG # :** 880 SCQ4-KSS  
**KEY NUMBER :** K-KSS  
**Key included? :** Yes  
**Material :** Stainless steel  
**For use with :** ESS series, ESSA 9412 SS, SSDD...

## Stainless steel handles



### Key lock 'L' handle

**CATALOG # :** 880 SCQ4-LSS  
**KEY NUMBER :** K-LSS  
**Key included? :** Yes  
**Material :** Stainless steel  
**For use with :** ESS series, ESSA 9412 SS, SSDD...



### Key lock 'T' handle

**CATALOG # :** 880 SCQ4-TSS  
**KEY NUMBER :** K-TSS  
**Key included? :** Yes  
**Material :** Stainless steel  
**For use with :** ESS series, ESSA 9412 SS, SSDD...



### Non-locking 'L' handle

**CATALOG # :** 880 SCQ4-LNSS  
**KEY NUMBER :** None  
**Key included? :** No  
**Material :** Stainless steel  
**For use with :** ESS series, ESSA 9412 SS, SSDD...



### Non-locking 'T' handle

**CATALOG # :** 880 SCQ4-TNSS  
**KEY NUMBER :** None  
**Key included? :** No  
**Material :** Stainless steel  
**For use with :** ESS series, ESSA 9412 SS, SSDD...

Data subject to change without notice.



# ESS SERIES DOOR LOCKS AND HANDLES

Tool operated locking mechanisms, stainless steel



Slot 2 X 4mm lock, 304 SS

CATALOG # : 880 SCQ4-SLSS4  
KEY NUMBER : None  
Key included? : N/A  
Material : Stainless steel 304  
For use with : ESS series, ESSA, 9412 SS, ESSDD...



Slot 2 X 4mm lock, 316 SS

CATALOG # : 880 SCQ4-SLSS6  
KEY NUMBER : None  
Key included? : No  
Material : Stainless steel 316  
For use with : ESS series, ESSA, 9412 SS, ESSDD...



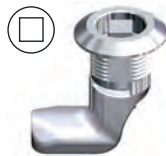
Square 7mm, 304 SS

CATALOG # : 880 SCQ4-SQ7SS4  
KEY NUMBER : K-SQ7  
Key included? : No  
Material : Stainless steel 304  
For use with : ESS series, ESSA, 9412 SS, ESSDD...



Square 7mm, 316 SS

CATALOG # : 880 SCQ4-SQ7SS6  
KEY NUMBER : K-SQ7  
Key included? : No  
Material : Stainless steel 316  
For use with : ESS series, ESSA, 9412 SS, ESSDD...



Square 8mm, 304 SS

CATALOG # : 880 SCQ4-SQ8SS4  
KEY NUMBER : K-SQ8  
Key included? : No  
Material : Stainless steel 304  
For use with : ESS series, ESSA, 9412 SS, ESSDD...



Square 8mm, 316 SS

CATALOG # : 880 SCQ4-SQ8SS6  
KEY NUMBER : K-SQ8  
Key included? : No  
Material : Stainless steel 316  
For use with : ESS series, ESSA, 9412 SS, ESSDD...



Triangular 7mm, 304 SS

CATALOG # : 880 SCQ4-TR7SS4  
KEY NUMBER : K-TR7  
Key included? : No  
Material : Stainless steel 304  
For use with : ESS series, ESSA, 9412 SS, ESSDD...



Triangular 7mm, 316 SS

CATALOG # : 880 SCQ4-TR7SS6  
KEY NUMBER : K-TR7  
Key included? : No  
Material : Stainless steel 316  
For use with : ESS series, ESSA, 9412 SS, ESSDD...



Triangular 8mm, 304 SS

CATALOG # : 880 SCQ4-TR8SS4  
KEY NUMBER : K-TR8  
Key included? : No  
Material : Stainless steel 304  
For use with : ESS series, ESSA, 9412 SS, ESSDD...



Triangular 8mm, 316 SS

CATALOG # : 880 SCQ4-TR8SS6  
KEY NUMBER : K-TR8  
Key included? : No  
Material : Stainless steel 316  
For use with : ESS series, ESSA, 9412 SS, ESSDD...



Double bit 3mm, 304 SS

CATALOG # : 880 SCQ4-DB3SS4  
KEY NUMBER : K-DB3  
Key included? : No  
Material : Stainless steel 304  
For use with : ESS series, ESSA, 9412 SS, ESSDD...



Double bit 3mm, 316 SS

CATALOG # : 880 SCQ4-DB3SS6  
KEY NUMBER : K-DB3  
Key included? : No  
Material : Stainless steel 316  
For use with : ESS series, ESSA, 9412 SS, ESSDD...



Double bit 5mm, 304 SS

CATALOG # : 880 SCQ4-DB5SS4  
KEY NUMBER : K-DB5  
Key included? : No  
Material : Stainless steel 304  
For use with : ESS series, ESSA, 9412 SS, ESSDD...



Double bit 5mm, 316 SS

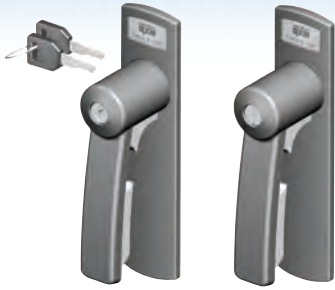
CATALOG # : 880 SCQ4-DB5SS6  
KEY NUMBER : K-DB5  
Key included? : No  
Material : Stainless steel 316  
For use with : ESS series, ESSA, 9412 SS, ESSDD...

Data subject to change without notice.



# CABINET HANDLES

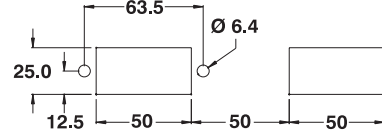
## Cabinet handles



The **880 APH** automotive padlockable handle was designed to fit most type 4-12 enclosures. The handle is available with a key insert or spring loaded defeater, requiring a tool in order to operate the mechanism for disconnect requirements. A unique padlock trigger ensures positive closing. The handle can incorporate your company logo. Finish is textured black.

CATALOG NUMBER	DESCRIPTION	SHIP WGHT LBS.
880 APH-K	Key lock	2
880 APH-D	Slotted defeater	2

Note : Trigger is designed to fit 1/4" and 5/16" padlocks.



The **885 ESL3** seal type door handle was designed to fit most type 4-12 enclosures. The handle is available with a key insert, a standard slot screw driver insert or a variety of other inserts. The 885 ESL3 are used when there is a need for a swivel handle with a seal provision. A protective dust cap is provided. Locks are rated NEMA Type 4. Finish is textured black.

CATALOG NUMBER	DESCRIPTION	SHIP WGHT LBS.
885 ESL3K	Key lock	1
885 ESL3S	Screw driver slot	1
885 ESL3SQ7	Square 7mm	1
885 ESL3SQ8	Square 8mm	1
885 ESL3TR7	Triangular 7mm	1
885 ESL3TR8	Triangular 8mm	1
885 ESL3DB3	Double bit 3mm	1
885 ESL3DB5	Double bit 5mm	1
885 ESL3B	Blank	1



The **885 ESL4** seal type handle was designed to fit most type 4-12 enclosures. The handle is available with a key insert, a standard slot screw driver insert or a variety of other inserts. The 885 ESL4 are used when there is a need for a swivel handle with a padlock provision. This handle accommodates a 1/4" padlock. Locks are rated NEMA Type 4. Finish is textured black.

CATALOG NUMBER	DESCRIPTION	SHIP WGHT LBS.
885 ESL4K	Key lock	1
885 ESL4S	Screw driver slot	1
885 ESL4SQ7	Square 7mm	1
885 ESL4SQ8	Square 8mm	1
885 ESL4TR7	Triangular 7mm	1
885 ESL4TR8	Triangular 8mm	1
885 ESL4DB3	Double bit 3mm	1
885 ESL4DB5	Double bit 5mm	1
885 ESL4B	Blank	1

In addition to the standard slot and key lock, these inserts are available for the 885 ESL3 and 885 ESL4



Square 8mm



Square 7mm



Triangular 8mm



Triangular 7mm



Double bit 5mm



Double bit 3mm

Other inserts available upon request.

## Double door internal handle



The **880 DDH** double door internal handle is designed to secure the flange door on a double door cabinet. This 2 point locking mechanism, prevents the flange door from opening inadvertently when the locking door is open. The handle is made from zinc casting and installs inside the flange door with latching rods (ordered separately, page 458).

CATALOG NUMBER	DESCRIPTION	SHIP WGHT LBS.
880 DDH	Blank	1

Data subject to change without notice.

# CABINET HANDLES, PULL DOWN HASPS



The **880 PH** padlockable handles are used for outdoor application. This sturdy handle is made of chrome plated steel or of stainless steel. Comes complete with installation hardware and gasket.

CATALOG NUMBER	DESCRIPTION	SHIP WGHT LBS.
880 PH	Chrome plated steel	1
880 PHSS	Stainless steel	1



The **886 ELKPX** electronic keypad system grants access to an enclosure upon entry of the correct code on the keypad. The handle can be used standalone, in electronic master-slave systems and remote access control systems.

**For detailed information on the E.line electromechanical lock system, please see page 140.**



The **886 ELIT** transponder handle is opened using transponder devices. The handle can be used standalone, in electronic master-slave systems and remote access control systems.

**For detailed information on the E.line electromechanical lock system, please see page 140.**

*Please see page 140 for details.*

## Pull down hasps



### Pull down padlock hasp

CATALOG # : 883 CM1SS  
 KEY NUMBER : Use padlock  
 Key included? : No  
 Material : Stainless steel  
 For use with : 5412 ESRQ,  
 1500 SS



### SS Pull down padlock hasp

CATALOG # : 883 CM2SS  
 KEY NUMBER : Use padlock  
 Key included? : No  
 Material : Stainless steel  
 For use with : 5300 ES + 5300  
 ESCH



### SS Antivibration pull down hasp

CATALOG # : 883 CM1LSS  
 KEY NUMBER : Use padlock  
 Key included? : No  
 Material : Stainless steel  
 For use with : 5412 ESRQ,  
 1500 SS



### SS Antivibration pull down hasp

CATALOG # : 883 CM2LSS  
 KEY NUMBER : Use padlock  
 Key included? : No  
 Material : Stainless steel  
 For use with : 5300 ES + 5300  
 ESCH

Data subject to change without notice.



# GEAR BOX AND LATCH RODS

## Gear boxes - Series 885 GBOX

The **885 GBOX-1** gear boxes are used with EXM door locks as three point latch locking mechanisms. Two versions of 885 GBOX exist, each corresponding to a particular EXM right hand door lock.



CATALOG NUMBER	FOR USE WITH	SHIP WGHT LBS.
885 GBOX-132	5412 ES	1
885 GBOX-136	5500 DDS, 9500	1

The **885 GBOX-2** gear boxes are used with EXM door locks as three point latch locking mechanisms. Two versions of 885 GBOX-2 exist, each corresponding to a particular EXM left hand door lock.



CATALOG NUMBER	FOR USE WITH	SHIP WGHT LBS.
885 GBOX-232	5412 ES	1
885 GBOX-236	5500 DDS, 9500	1

The **885 GBOX-3** gear boxes are used with EXM door locks as two or three point latch locking mechanisms. Two versions of 885 GBOX-3 exist, each corresponding to a particular EXM door lock.



CATALOG NUMBER	FOR USE WITH	SHIP WGHT LBS.
885 GBOX-332-2	5500 ESY, ESSY	1
885 GBOX-332-3	5500 ESY, ESSY	1

885 GBOX-332-2  
(2 point lock)

885 GBOX-332-3  
(3 point lock)

## Latching rods for 5500 and 9500 series

The **CBAR series** is used as part of a three point latching mechanism in the 5412, 5500 and 9500 series enclosures. The CBAR's can be used as replacement parts or to build a custom latching mechanism.

**881 CBAR** latching rods fit 5500 ESDD series cabinets and large 5412 ES cabinets (height >=42").

**885 CBAR** latching rods fit 5500 DDS series cabinets.

**889 CBAR** latching rods fit 9500 series cabinets.



CATALOG NUMBER	FOR USE WITH 5412 ES / 5500 ESDD	SHIP WGHT LBS.
881 CBAR24	24" height	1
881 CBAR30	30" height	1
881 CBAR36	36" height	2
881 CBAR42	42" height	3
881 CBAR48	48" height	3
881 CBAR54	54" height	3
881 CBAR60	60" height	3
881 CBAR72	72" height	3

CATALOG NUMBER	FOR USE WITH 5500 DDS CABINETS	SHIP WGHT LBS.
885 CBAR60	60" height	3
885 CBAR72	72" height	3

CATALOG NUMBER	FOR USE WITH 9500 CABINETS	SHIP WGHT LBS.
889 CBAR60	60" height	3
889 CBAR72	72" height	3
889 CBAR84	84" height	3
889 CBAR90	90" height	3

Data subject to change without notice.

# PROVISIONS

## Padlock provisions



### Universal padlock provisions

**CATALOG # :** 880 PLCHQ375  
**KEY NUMBER :** Use 880 PDLK375  
**Key included? :** No  
**Material :** Stainless steel  
**For use with :** ES series, 9412, CH series...



### General purpose padlock

**CATALOG # :** 880 PL1  
**KEY NUMBER :** Use padlock  
**Key included? :** No  
**Material :** Plated steel  
**For use with :** ES series, 9412 ESA, 5412 ESDD...



### Stainless steel padlock

**CATALOG # :** 880 PL1SS  
**KEY NUMBER :** Use padlock  
**Key included? :** No  
**Material :** Stainless steel  
**For use with :** ES series, 9412 ESA, 5412 ESDD...



### "CH" Padlock provision

**CATALOG # :** 880 PL2  
**KEY NUMBER :** Use padlock  
**Key included? :** No  
**Material :** Plated steel  
**For use with :** Enclosures with protruding covers (except 1100 E)



### "CHSS" Padlock provision

**CATALOG # :** 880 PL2SS  
**KEY NUMBER :** Use padlock  
**Key included? :** No  
**Material :** Stainless steel  
**For use with :** Enclosures with protruding covers (except 1100 E)



### "DD" Padlock provision

**CATALOG # :** 880 PLDD375  
**KEY NUMBER :** Use padlock  
**Key included? :** No  
**Material :** Plated steel  
**For use with :** Double door enclosures



### "DD" Key lock

**CATALOG # :** 880 PLDD-KL  
**KEY NUMBER :** K-KL1  
**Key included? :** Yes  
**Material :** Plated steel  
**For use with :** Double door enclosures



### Scissor Padlock provision

**CATALOG # :** 880 PL3  
**KEY NUMBER :** Use padlock  
**Key included? :** No  
**Material :** Plated steel  
**For use with :** Double door enclosures



### Scissor Padlock provision

**CATALOG # :** 880 PL3SS  
**KEY NUMBER :** Use padlock  
**Key included? :** No  
**Material :** Stainless steel  
**For use with :** Double door enclosures



### Padlockable wing handle

**CATALOG # :** 880 SCQ4-WNP  
**KEY NUMBER :** Padlock  
**Key included? :** No  
**Material :** Polyamide GF/Zinc  
**For use with :** ES series, 9412 ESA, 5412 ESDD...



### Padlockable wing handle

**CATALOG # :** 880 SCQ4-WNPSS  
**KEY NUMBER :** Padlock  
**Key included? :** No  
**Material :** Stainless steel  
**For use with :** ESS series, ESSA 9412 SS, SSDD...



### Padlockable handle

**CATALOG # :** 880 PH  
**KEY NUMBER :** Use padlock  
**Key included? :** No  
**Material :** Plated steel  
**For use with :** Outdoor use.



### Padlockable handle

**CATALOG # :** 880 PHSS  
**KEY NUMBER :** Use padlock  
**Key included? :** No  
**Material :** Stainless steel  
**For use with :** Outdoor use.



### Padlockable with no key

**CATALOG # :** 880 SCQ4-QLPN  
**KEY NUMBER :** None  
**Key included? :** No  
**Material :** Zinc Cast  
**For use with :** ES series, 9412 ESA, 5412 ESDD...



### Padlockable with key lock

**CATALOG # :** 880 SCQ4-QLP  
**KEY NUMBER :** K-KL1  
**Key included? :** Yes  
**Material :** Zinc Cast  
**For use with :** 1100 CC, 5300 MC,

Data subject to change without notice.

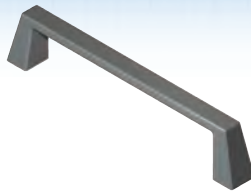
\* For weatherproof padlock 3/8" (880 PDLK375) please refer to page 452.



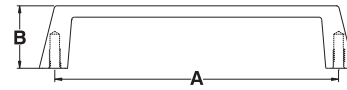
# BRIDGE HANDLES

## Light duty

The **880 HBL** are designed for vertical or horizontal use, to carry or pull enclosures or equipment. Made from zinc die cast, they are fastened with M4 screws. The 1100 IB enclosures have knockouts at 3.94" (100mm) to permit assembly of these handles.



CATALOG NUMBER	DIMENSIONS		FINISH	SHIP WGHT LBS.
	A	B		
880 HBL100B	3.94	0.87	Black	1

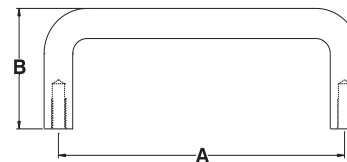


## Medium duty - Round

The **880 HBMR** are designed for vertical or horizontal use, to carry or pull enclosures or equipment. Made from aluminum, they are fastened with M5 screws. The 1100 IB enclosures have knockouts at 3.94" (100mm) to permit assembly of these handles.



CATALOG NUMBER	DIMENSIONS		FINISH	SHIP WGHT LBS.
	A	B		
880 HBMR100A	3.94	1.57	Anodized	1

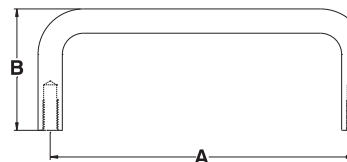


## Medium duty - Half round

The **880 HBMH** are designed for vertical or horizontal uses, to carry or pull enclosures or equipment. Made from aluminum, they are fastened with M5 screws. The 1100 IB enclosures have knockouts at 3.94" (100mm) to permit assembly of these handles.



CATALOG NUMBER	DIMENSIONS		FINISH	SHIP WGHT LBS.
	A	B		
880 HBMH100A	3.94	1.26	Anodized	1

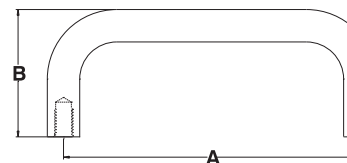


## Heavy duty - Ellipse

The **880 HBLE** are designed for vertical or horizontal uses, to carry or pull enclosures or equipment. Made from aluminum, they are fastened with M8 screws. Installation of these handles require drilling of two holes at 5.03 (128mm) center to center.



CATALOG NUMBER	DIMENSIONS		FINISH	SHIP WGHT LBS.
	A	B		
880 HBLE128A	5.03	1.61	Anodized	1

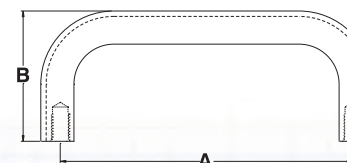


## Heavy duty - Kidney

The **880 HBLK** are designed for vertical or horizontal uses, to carry or pull enclosures or equipment. Made from aluminum, they are fastened with M8 screws. Installation of these handles require drilling of two holes at 5.03 (128mm) center to center.



CATALOG NUMBER	DIMENSIONS		FINISH	SHIP WGHT LBS.
	A	B		
880 HBLK128A	5.03	1.67	Anodized	1



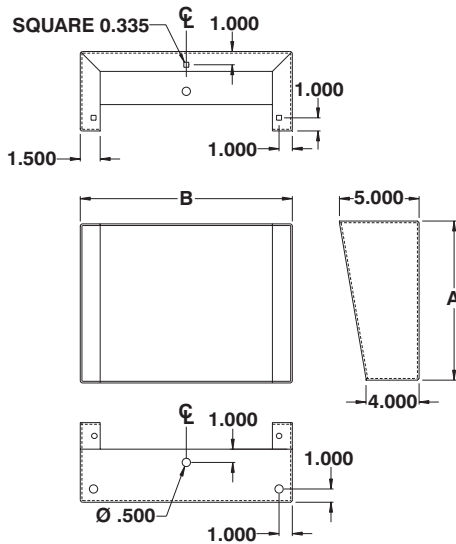
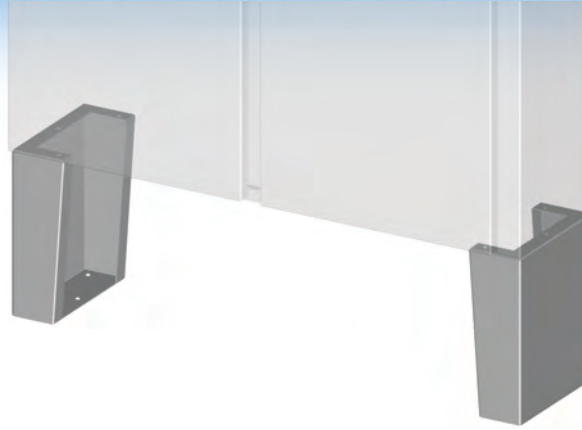
Data subject to change without notice.

# MOUNTING FEET AND FLOOR STANDS

## 5412 & 5500 series floor mounting stands

The 885 MF floor mounting stands are made standard in 14 GA steel, Light Duty† and Heavy Duty‡ are also available in 16 GA and 12 GA (see details below). Stands are predrilled for fixation to the floor and to the bottom of the ES, ESDD, DD, UCD families of enclosures. Kits come complete with all necessary hardware. Mounting feet are finished with heat fused powder paint, electrostatically applied on a pretreated base. Finish is ANSI/ASA 61 gray.

Refer to p.727 to validate choice of substrate for the application



CATALOG NUMBER	DIMENSIONS		SHIP WGHT LBS.	CATALOG NUMBER	DIMENSIONS		SHIP WGHT LBS.
	A	B			A	B	
885 MF0606	6	6	14	885 MF1516	15	16	37
885 MF0608	6	8	16	885 MF1518	15	18	40
885 MF0610	6	10	17	885 MF1520	15	20	44
885 MF0612	6	12	18	885 MF1524	15	24	45
885 MF0616	6	16	21	885 MF1806	18	6	28
885 MF0620	6	20	25	885 MF1808	18	8	32
885 MF0624	6	24	28	885 MF1810	18	10	36
885 MF1206	12	6	21	885 MF1812	18	12	41
885 MF1208	12	8	23	885 MF1816	18	16	47
885 MF1210	12	10	26	885 MF1820	18	20	49
885 MF1212	12	12	32	885 MF1824	18	24	51
885 MF1216	12	16	35	885 MF2406	24	6	38
885 MF1220	12	20	40	885 MF2408	24	8	40
885 MF1224	12	24	42	885 MF2410	24	10	45
885 MF1506	15	6	23	885 MF2412	24	12	50
885 MF1508	15	8	25	885 MF2416	24	16	58
885 MF1510	15	10	28	885 MF2420	24	20	65
885 MF1512	15	12	34	885 MF2424	24	24	70

† For Light Duty (16 GA) add 'LD' to the product family name (i.e.: 885 MFLD1212)

‡ For Heavy Duty (12GA) add 'HD' to the product family name (i.e.: 885 MFHD1212)

\* Add suffix 'SS' for stainless steel.

(i.e.: 885 MF1212SS or 885 MFLD1212SS or 885 MFHD1212SS)

\*\* Add suffix 'SSP' for painted stainless steel

(i.e.: 885 MF1212SSP or 885 MFLD1212SSP or 885 MFHD1212SSP)

## Tubular floor stands

The 880 MFT tubular floor stands are used to elevate the enclosure 3" (76mm) from the floor and anchor it. It permits transport with suitable fork lift. Made from 12 GA steel and finished with ANSI/ASA 61 textured gray, heat fused powder paint, electrostatically applied on a pretreated base. Sold in pack of 2.

Refer to p.727 to validate choice of substrate for the application



CATALOG NUMBER	ENCLOSURE DEPTH	SHIP WGHT LBS.
880 MFT06	6	3
880 MFT08	8	5
880 MFT10	10	6
880 MFT12	12	7
880 MFT16	16	9
880 MFT20	20	12
880 MFT24	24	14

\* Add suffix 'SS' for stainless.

Data subject to change without notice.

# MOUNTING FEET AND BASE PLINTH

## Mounting feet for small and medium-sized enclosures



### JIC Wall mounting feet

**CATALOG # :** 885 ESCHMF  
**Four mounting feet & hardware incl.**  
**Mounted vertically or horizontally.**  
**Material :** Zinc cast  
**For use with :** ESCH series,  
 1100, ESSC...



### SS JIC Wall mounting feet

**CATALOG # :** 885 ESSCHMF  
**Four mounting feet & hardware incl.**  
**Mounted vertically or horizontally.**  
**Material :** Stainless steel  
**For use with :** ESSCH series,  
 ESSC...



### "CH" Wall mounting feet

**CATALOG # :** 885 CHMF  
**Four mounting feet & hardware incl.**  
**Mounted vertically or horizontally.**  
**Material :** Plated steel  
**For use with :** 1412 CH, CHP,  
 1412 B, 1412 T



### "CHSS" Wall mounting feet

**CATALOG # :** 885 CHSSMF  
**Four mounting feet & hardware incl.**  
**Mounted vertically or horizontally.**  
**Material :** Stainless steel  
**For use with :** 1412 CHSS, CHPSS,  
 1412 BSS, 1412 TSS



### 'ES' Wall mounting feet

**CATALOG # :** 885 ESMF1  
**Four mounting feet & hardware incl.**  
**Mounted vertically or horizontally.**  
**Material :** Plated steel  
**For use with :** ES series, ESDD,  
 5300 MC, ESA, ESY



### SS Wall mounting feet

**CATALOG # :** 885 ESMF2  
**Four mounting feet & hardware incl.**  
**Mounted vertically or horizontally.**  
**Material :** Stainless steel  
**For use with :** ESS series, ESSDD  
 ESSA, ESSY...



### Offset mounting feet 0.5"

**CATALOG # :** 885 ESOMF1  
**Four mounting feet & hardware incl.**  
**Mounted vertically or horizontally.**  
**Material :** Plated steel  
**For use with :** ES series, ESDD,  
 5300 MC, ESA, ESY



### SS offset mounting feet 0.5"

**CATALOG # :** 885 ESOMF2  
**Four mounting feet & hardware incl.**  
**Mounted vertically or horizontally.**  
**Material :** Stainless steel  
**For use with :** ESS series, ESSDD  
 ESSA, ESSY...



### Offset mounting feet 1.5"

**CATALOG # :** 885 ESOMF1A  
**Four mounting feet & hardware incl.**  
**Mounted vertically or horizontally.**  
**Material :** Plated steel  
**For use with :** ES series, ESDD,  
 5300 MC, ESA, ESY



### SS offset mounting feet 1.5"

**CATALOG # :** 885 ESOMF2A  
**Four mounting feet & hardware incl.**  
**Mounted vertically or horizontally.**  
**Material :** Stainless steel  
**For use with :** ESS series, ESSDD  
 ESSA, ESSY...



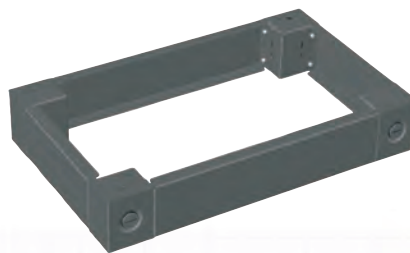
### 'ESFR' Wall mounting feet

**CATALOG # :** 885 ESFRMF  
**Four mounting feet & hardware incl.**  
**Mounted vertically or horizontally.**  
**Material :** Plastic  
**For use with :** ESFRS, ESFRH,  
 ESFRQ

## Plinths for metric consoles

The 886 PL...CO and ...MCO are used with the metric consoles. The plinths are made from code steel or stainless steel and are supplied with all the required installation hardware to attach them to the consoles.

Plinths are finished with heat fused powder paint, electrostatically applied on a pretreated base. Finish is RAL7011 sandtex dark gray.



Refer to p.727 to validate choice of substrate for the application

CATALOG NUMBER	DIMENSIONS	
	WIDTH	DEPTH
886 PL0604CO	600	400
886 PL0804CO	800	400
886 PL1004CO	1000	400
886 PL1204CO	1200	400
886 PL0604MCO	600	400
886 PL0804MCO	800	400
886 PL1004MCO	1000	400
886 PL1204MCO	1200	400
886 PL1604MCO	1600	400
886 PL0605MCO	600	500
886 PL0805MCO	800	500
886 PL1005MCO	1000	500
886 PL1205MCO	1200	500
886 PL1605MCO	1600	500

\* Add suffix 'SS' for stainless.  
 Note: Dimensions are metric

Data subject to change without notice.



## Plinths for wall mounted enclosures (imperial)

The **880 PLES** plinths are used with the enclosures ES, ESDD and ESDA when a cable entry or floor mounting is required. The 880 PLES are used with imperial enclosures. The plinths are made

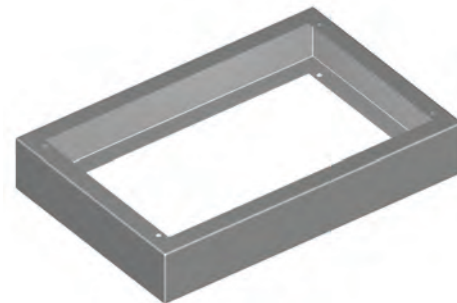
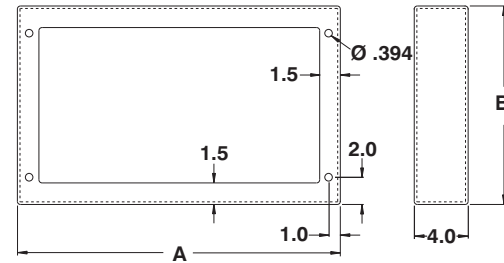
from 14 GA steel or stainless steel and are supplied with all the required installation hardware to attach them to the enclosure. Plinths are finished with heat fused powder paint, electrostatically

applied on a pretreated base. Finish is RAL7011 sandtex dark gray.

**Refer to p.727 to validate choice of substrate for the application**

CATALOG NUMBER	DIMENSIONS A	DIMENSIONS B	SHIP WGHT LBS.	CATALOG NUMBER	DIMENSIONS A	DIMENSIONS B	SHIP WGHT LBS.
880 PLES1206	12	6	6	880 PLES4810	48	10	19
880 PLES1606	16	6	7	880 PLES6010	60	10	23
880 PLES2006	20	6	8	880 PLES1612	16	12	9
880 PLES2406	24	6	10	880 PLES2012	20	12	10
880 PLES3006	30	6	12	880 PLES2412	24	12	12
880 PLES1208	12	8	6	880 PLES3012	30	12	14
880 PLES1608	16	8	8	880 PLES3612	36	12	16
880 PLES2008	20	8	9	880 PLES4212	42	12	18
880 PLES2408	24	8	10	880 PLES4812	48	12	19
880 PLES3008	30	8	12	880 PLES6012	60	12	23
880 PLES3608	36	8	14	880 PLES2016	20	16	12
880 PLES4208	42	8	16	880 PLES2416	24	16	13
880 PLES4808	48	8	18	880 PLES3016	30	16	15
880 PLES1210	12	10	7	880 PLES3616	36	16	17
880 PLES1610	16	10	8	880 PLES2420	24	20	14
880 PLES2010	20	10	10	880 PLES3020	30	20	16
880 PLES2410	24	10	11	880 PLES3620	36	20	18
880 PLES3010	30	10	13	880 PLES2424	24	24	16
880 PLES3610	36	10	15	880 PLES3024	30	24	18
880 PLES4210	42	10	17				

\* Add suffix 'SS' for stainless.  
Note: Dimensions are in inches



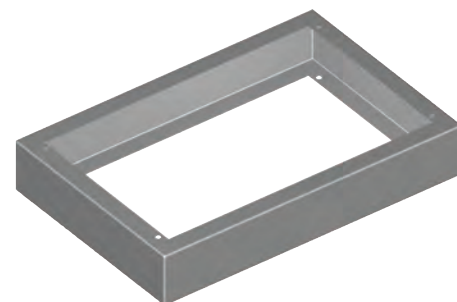
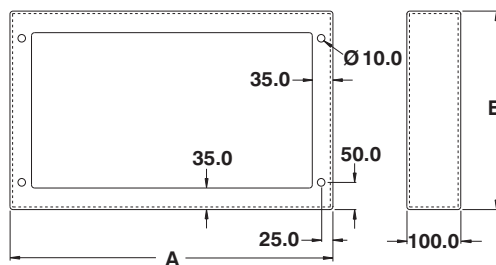
## Plinths for wall mounted enclosures (metric)

The **886 PLES** plinths are used with the enclosures ES and ESDD when cable entry or floor mounting is required. The 886 PLES are used with the metric sized enclosures. The plinths are made from 14 GA

steel or stainless steel and are supplied with all the required installation hardware to attach them to the enclosure. Plinths are finished with heat fused powder paint, electrostatically applied on a pretreated

base. Finish is RAL7011 sandtex dark gray.

**Refer to p.727 to validate choice of substrate for the application**



CATALOG NUMBER	DIMENSIONS A	DIMENSIONS B	SHIP WGHT LBS.	CATALOG NUMBER	DIMENSIONS A	DIMENSIONS B	SHIP WGHT LBS.
886 PLES2015	200	150	4	886 PLES4025	400	250	8
886 PLES3015	300	150	6	886 PLES5025	500	250	10
886 PLES4015	400	150	7	886 PLES6025	600	250	11
886 PLES3020	300	200	6	886 PLES6030	600	300	11
886 PLES4020	400	200	8	886 PLES8030	800	300	14
886 PLES5020	500	200	9	886 PLES1030	1000	300	17
886 PLES6020	600	200	10	886 PLES4040	400	400	10
886 PLES1020	1000	200	15	886 PLES6040	600	400	13

\* Add suffix 'SS' for stainless.  
Note: Dimensions are metric

Data subject to change without notice.

# REPLACEMENT DOORS

## Replacement doors for ESCH enclosures

The **CHD Series** replacement doors were designed to fit our ESCH style enclosures.

The **881 CHD** are ANSI/ASA 61 gray and fit 5100 ESCH boxes.  
The **883 CHD** are ANSI/ASA 61

gray and fit 5300 ESCH boxes.

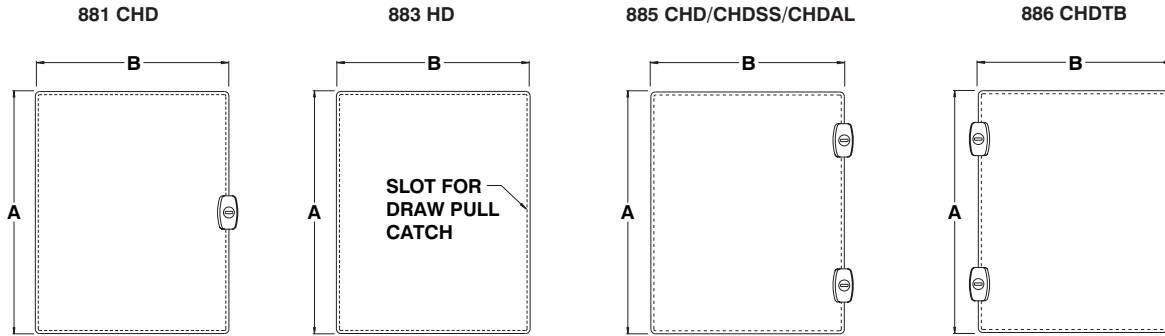
The **885 CHD** are ANSI/ASA 61 gray and fit 5412 ESCH.

The **885 CHDSS** are brushed stainless and fit the 5412 ESSCH.

The **885 CHDAL** are aluminum and fit 5412 EALCH boxes.

The **886 CHD** are RAL7035 gray and fit 5412 ESCHB boxes.

The **886 CHDTB** are RAL7035 light gray and fit 6412 ESCHTB boxes.



1 LOCK FOR ALL SIZES  
DOORS C/W RUBBER BUMPER

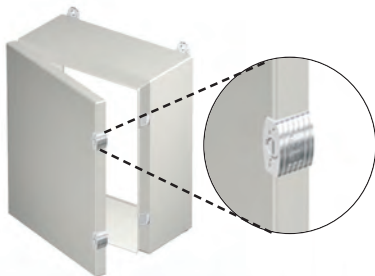
1 SLOT FOR ALL SIZES  
DOORS C/W POURED GASKET

1 LOCK IF A < 12"  
2 LOCKS IF A ≥ 12"  
DOORS C/W POURED GASKET

1 LOCK IF A < 305 mm  
2 LOCKS IF A ≥ 305 mm  
DOORS C/W POURED GASKET

NOMINAL		CATALOG NUMBER - DOORS FOR						NOMINAL METRIC DOORS *		
H	W	5100 ESCH	5300 ESCH	5412 ESCH	5412 ESSCH	5412 EALCH	5412 ESCHB	H	W	6412 ESCHTB
4	4	881 CHD0404	---	885 CHD0404	885 CHDSS0404	885 CHDAL0404	886 CHD0404	150	150	886 CHDTB1515
6	4	881 CHD0604	---	885 CHD0604	885 CHDSS0604	885 CHDAL0604	886 CHD0604	200	200	886 CHDTB2020
6	6	881 CHD0606	883 CHD0606	885 CHD0606	885 CHDSS0606	885 CHDAL0606	886 CHD0606	300	200	886 CHDTB3020
8	6	881 CHD0806	883 CHD0806	885 CHD0806	885 CHDSS0806	885 CHDAL0806	886 CHD0806	400	200	886 CHDTB4020
8	8	881 CHD0808	883 CHD0808	885 CHD0808	885 CHDSS0808	885 CHDAL0808	886 CHD0808	500	200	886 CHDTB5020
8	10	881 CHD0810	---	885 CHD0810	885 CHDSS0810	885 CHDAL0810	886 CHD0810	600	200	886 CHDTB6020
10	8	881 CHD1008	883 CHD1008	885 CHD1008	885 CHDSS1008	885 CHDAL1008	886 CHD1008	800	200	886 CHDTB8020
10	10	881 CHD1010	---	885 CHD1010	885 CHDSS1010	885 CHDAL1010	886 CHD1010	300	150	886 CHDTB3015
10	12	881 CHD1012	---	885 CHD1012	885 CHDSS1012	885 CHDAL1012	886 CHD1012	300	300	886 CHDTB3030
12	6	881 CHD1206	---	885 CHD1206	885 CHDSS1206	885 CHDAL1206	886 CHD1206	400	300	886 CHDTB4030
12	10	881 CHD1210	883 CHD1210	885 CHD1210	885 CHDSS1210	885 CHDAL1210	886 CHD1210	400	400	886 CHDTB4040
12	12	881 CHD1212	883 CHD1212	885 CHD1212	885 CHDSS1212	885 CHDAL1212	886 CHD1212	500	300	886 CHDTB5030
12	14	881 CHD1214	---	885 CHD1214	885 CHDSS1214	885 CHDAL1214	886 CHD1214	600	300	886 CHDTB6030
14	8	881 CHD1408	---	885 CHD1408	885 CHDSS1408	885 CHDAL1408	886 CHD1408	600	400	886 CHDTB6040
14	12	881 CHD1412	---	885 CHD1412	885 CHDSS1412	885 CHDAL1412	886 CHD1412	600	600	886 CHDTB6060
14	16	881 CHD1416	---	885 CHD1416	885 CHDSS1416	885 CHDAL1416	886 CHD1416	800	200	886 CHDTB8020
16	10	881 CHD1610	---	885 CHD1610	885 CHDSS1610	885 CHDAL1610	886 CHD1610	800	400	886 CHDTB8040
16	12	881 CHD1612	---	885 CHD1612	885 CHDSS1612	885 CHDAL1612	886 CHD1612	---	---	---
16	14	881 CHD1614	---	885 CHD1614	885 CHDSS1614	885 CHDAL1614	886 CHD1614	---	---	---

\* Metric doors are in millimeters



### Did you know?

EXM ESCH style enclosures feature exclusive flange-mounted quarter-turn locks. These locks are positioned to maximize the available instrument mounting surface on the door.

Data subject to change without notice.

# REPLACEMENT DOORS

## Replacement doors for ES enclosures

The **CE Series** replacement doors were designed to fit our ES style enclosures.

The **881 CE** are ANSI/ASA 61 gray and fit 5100 ES boxes.

The **883 CE** are ANSI/ASA 61 gray and fit 5300 ES boxes.

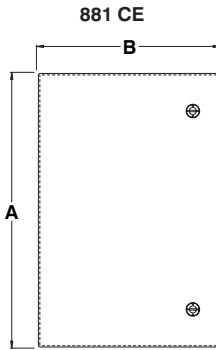
The **885 CE** are ANSI/ASA 61 gray and fit 5412 ES and 5412 ESFM boxes.

The **885 CESS** are brushed stain-

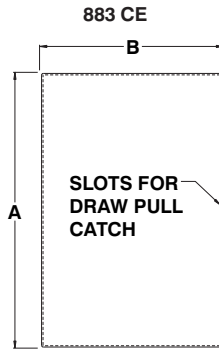
less steel and fit 5412 ESS boxes.

The **885 CHDAL** are aluminum and fit 5412 EAL boxes.

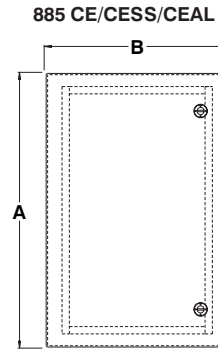
The **886 CE** are RAL7035 light gray and fit 6412 ES enclosures.



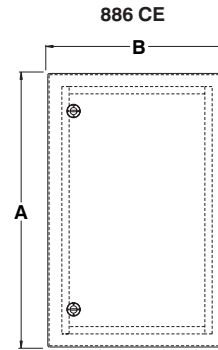
1 LOCK IF A <= 30"  
2 LOCKS IF A > 30"  
3 LOCKS IF A >= 60"  
DOORS C/W RUBBER BUMPER



1 SLOT IF A < 20"  
2 SLOTS IF A >= 20"  
3 SLOTS IF A >= 42"  
DOORS C/W POURED GASKET



1 LOCK IF A < 20"  
2 LOCKS IF A >= 20"  
3 POINT HANDLE IF A >= 42"  
DOORS C/W POURED GASKET



1 LOCK IF A < 20"  
2 LOCKS IF A >= 20"  
3 POINT HANDLE IF A >= 42"  
DOORS C/W POURED GASKET

NOMINAL		CATALOG NUMBER - DOORS FOR					NOMINAL		METRIC DOORS*
H	W	5100 ES	5300 ES	5412 ES	5412 ESS	5412 EAL	H	W	6412 ES
12	12	881 CE1212	883 CE1212	885 CE1212	885 CESS1212	885 CEAL1212	300	200	886 CE3020
12	24	881 CE1224	883 CE1224	885 CE1224	885 CESS1224	885 CEAL1224	300	300	886 CE3030
16	12	881 CE1612	883 CE1612	885 CE1612	885 CESS1612	885 CEAL1612	400	300	886 CE4030
16	16	881 CE1616	883 CE1616	885 CE1616	885 CESS1616	885 CEAL1616	300	400	886 CE3040
16	20	881 CE1620	883 CE1620	885 CE1620	885 CESS1620	885 CEAL1620	400	400	886 CE4040
20	12	881 CE2012	883 CE2012	885 CE2012	885 CESS2012	885 CEAL2012	400	600	886 CE4060
20	16	881 CE2016	883 CE2016	885 CE2016	885 CESS2016	885 CEAL2016	500	300	886 CE5030
20	20	881 CE2020	883 CE2020	885 CE2020	885 CESS2020	885 CEAL2020	500	400	886 CE5040
20	24	881 CE2024	883 CE2024	885 CE2024	885 CESS2024	885 CEAL2024	600	400	886 CE6040
24	12	881 CE2412	883 CE2412	885 CE2412	885 CESS2412	885 CEAL2412	500	500	886 CE5050
24	16	881 CE2416	883 CE2416	885 CE2416	885 CESS2416	885 CEAL2416	700	500	886 CE7050
24	20	881 CE2420	883 CE2420	885 CE2420	885 CESS2420	885 CEAL2420	600	600	886 CE6060
24	24	881 CE2424	883 CE2424	885 CE2424	885 CESS2424	885 CEAL2424	800	600	886 CE8060
24	30	881 CE2430	883 CE2430	885 CE2430	885 CESS2430	885 CEAL2430	1000	600	886 CE1060
30	12	881 CE3012	883 CE3012	885 CE3012	885 CESS3012	885 CEAL3012	800	800	886 CE8080
30	16	881 CE3016	883 CE3016	885 CE3016	885 CESS3016	885 CEAL3016	1200	600	886 CE1260
30	20	881 CE3020	883 CE3020	885 CE3020	885 CESS3020	885 CEAL3020	1200	800	886 CE1280
30	24	881 CE3024	883 CE3024	885 CE3024	885 CESS3024	885 CEAL3024	---	---	---
30	30	881 CE3030	883 CE3030	885 CE3030	885 CESS3030	885 CEAL3030	---	---	---
30	36	881 CE3036	883 CE3036	885 CE3036	885 CESS3036	885 CEAL3036	---	---	---
36	24	881 CE3624	883 CE3624	885 CE3624	885 CESS3624	885 CEAL3624	---	---	---
36	30	881 CE3630	883 CE3630	885 CE3630	885 CESS3630	885 CEAL3630	---	---	---
36	36	881 CE3636	883 CE3636	885 CE3636	885 CESS3636	885 CEAL3636	---	---	---
42	24	881 CE4224	883 CE4224	885 CE4224	885 CESS4224	885 CEAL4224	---	---	---
42	30	881 CE4230	883 CE4230	885 CE4230	885 CESS4230	885 CEAL4230	---	---	---
42	36	881 CE4236	883 CE4236	885 CE4236	885 CESS4236	885 CEAL4236	---	---	---
48	24	881 CE4824	883 CE4824	885 CE4824	885 CESS4824	885 CEAL4824	---	---	---
48	30	881 CE4830	883 CE4830	885 CE4830	885 CESS4830	885 CEAL4830	---	---	---
48	36	881 CE4836	883 CE4836	885 CE4836	885 CESS4836	885 CEAL4836	---	---	---
60	24	881 CE6024	883 CE6024	885 CE6024	885 CESS6024	885 CEAL6024	---	---	---
60	36	881 CE6036	883 CE6036	885 CE6036	885 CESS6036	885 CEAL6036	---	---	---
72	30	881 CE7230	883 CE7230	885 CE7230	885 CESS7230	885 CEAL7230	---	---	---
72	36	881 CE7236	883 CE7236	885 CE7236	885 CESS7236	885 CEAL7236	---	---	---

\* Metric doors are in millimeters

Data subject to change without notice.



# INNER PANELS

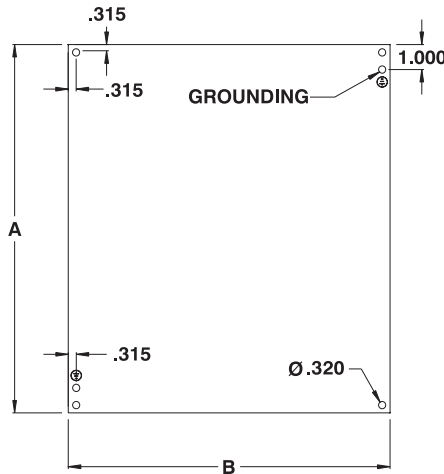
## JIC Inner panels - Series 880 SP

The **880 SP Series** replacement inner panels were designed to fit our ESCH, ESFR, ESSC and ESLC (see below for details) lines of enclosures. These lines come

complete with an inner panel, therefore an 880 SP is only ordered when a replacement or spare panel is required. The 880 SP are made of white powder

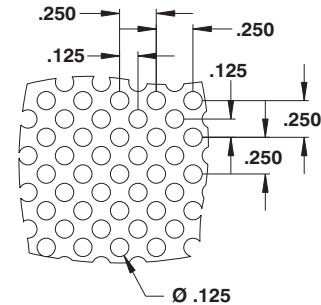
coated 14 GA steel. They are built in compliance with JIC standards and can be interchanged with most JIC inner panels from competing lines.

CATALOG NUMBER	DIMENSIONS		SHIP WGHT LBS.
	A	B	
880 SP0604	4.88	2.88	1
880 SP0606	4.88	4.88	1
880 SP0806	6.88	4.88	1
880 SP0808	6.88	6.88	1
880 SP1006	8.88	4.88	1
880 SP1008	8.88	6.88	2
880 SP1010	8.88	8.88	2
880 SP1204	10.88	2.88	2
880 SP1206	10.88	4.88	2
880 SP1208	10.88	6.88	2
880 SP1210	10.88	8.88	3
880 SP1212	10.88	10.88	3
880 SP1408	12.88	6.88	3
880 SP1412†	12.88	10.88	3
880 SP1512	13.88	10.88	4
880 SP1604	14.88	2.88	3
880 SP1606	14.88	4.88	3
880 SP1608	14.88	6.88	3
880 SP1610	14.88	8.88	4
880 SP1612	14.88	10.88	4
880 SP1614	14.88	12.88	4



For perforated panels, add suffix 'P' to the catalog number. (i.e. 880 SP1008P)

See perforation pattern below.



To order inner panels with specific material, add appropriate suffix to the catalog number.

\* For Aluminum :

Add suffix 'AL' to the catalog number (ie. 880 SP1008AL).

\* For Galvanized Steel :

Add suffix 'G' to the catalog number (ie. 880 SP1008G).

Note : For custom sizes and colors, please contact EXM.

\* For Stainless Steel:

Add suffix "S" to the catalog number (ie. 880 SP1008S)

The 880 SP inner panels are to be used with these enclosure lines, amongst others :



1100 (small)



5412 ESCH



5412 ESSCH



5412 ESFRS †



5412 ESFRH †



5412 ESFRQ †



1100 W (small)



5412 ESSC



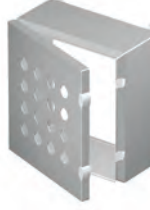
5412 ESLC



5100 ESCH



5300 ESCH



1500 EL

† For 14"x12" fiberglass enclosures, please order part number #880 SP1412FR.

Data subject to change without notice.

# INNER PANELS

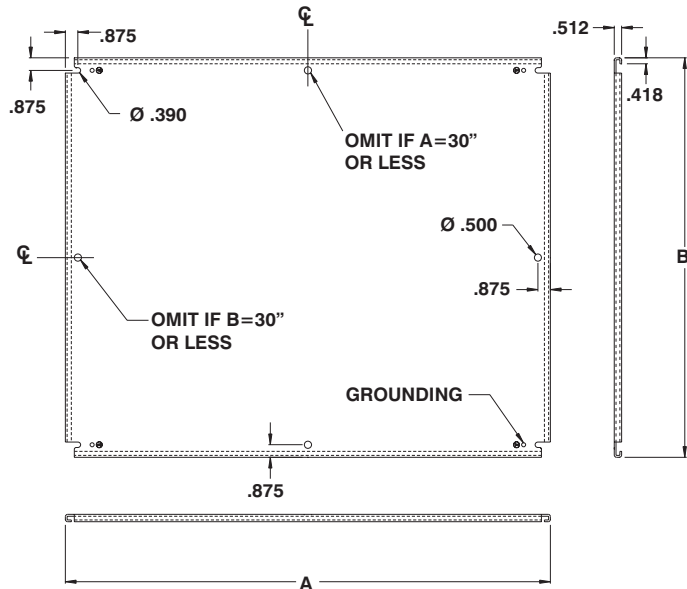
## 'ES' Inner panels - Series 881 SP

The **881 SP Series** replacement inner panels were designed to fit our ES and ESDD (see below for details) lines of enclosures.

These lines come complete with an inner panel, therefore an 881 SP is only ordered when a replacement or spare panel is

required. The 881 SP are made of white powder coated 12 GA steel. Perforated panels are also available.

CATALOG NUMBER	DIMENSIONS		SHIP WGHT LBS.
	A	B	
881 SP1212	10	10	3
881 SP1612	14	10	4
881 SP1616	14	14	6
881 SP2012	18	10	5
881 SP2016	18	14	7
881 SP2020	18	18	9
881 SP2412	22	10	8
881 SP2416	22	14	10
881 SP2420	22	18	13
881 SP2424	22	22	16
881 SP3012	28	10	10
881 SP3016	28	14	13
881 SP3020	28	18	17
881 SP3024	28	22	20
881 SP3030	28	28	25
881 SP3624	34	22	24
881 SP3630	34	28	30
881 SP3636	34	34	36
881 SP4224	40	22	28
881 SP4230	40	28	35
881 SP4236	40	34	43
881 SP4242	40	40	50
881 SP4824	46	22	32
881 SP4830	46	28	40
881 SP4836	46	34	49
881 SP4842	46	40	57
881 SP4848	46	46	65
881 SP5442	54	42	67
881 SP6024	58	22	40
881 SP6030	58	28	51
881 SP6036	58	34	61
881 SP6042	58	40	71
881 SP7230	70	28	61
881 SP7236	70	34	73



To order inner panels with specific material, add appropriate suffix to the catalog number.

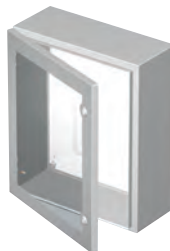
- \* For Aluminum :  
Add suffix 'AL' to the catalog number (ie. 881 SP4230AL).
- \* For Galvanized Steel :  
Add suffix 'G' to the catalog number (ie. 881 SP4230G).
- \* For Perforated Steel :  
Add suffix 'P' to the catalog number (ie. 881 SP4230P).
- \* For Stainless Steel:  
Add suffix "S" to the catalog number (ie. 880 SP4230S)

Note : For custom sizes and colors, please contact EXM.

The 881 SP inner panels are to be used with these enclosure lines, amongst others :



5412 ES



5412 ESW



5412 ESFM



5300 ES



5412 ESS



5100 ESDD



5500 ESDD



5500 ESSDD



5412 ESDD



5412 ESSDD

Data subject to change without notice.

# INNER PANELS

## 1100 and 1100 CIP Inner panels

The **882 SP Series** replacement inner panels are designed to fit our 1100, 1100 W and 1100 CIP enclosures. They are also interchangeable with the ES and ESDD family of products. Panels

with the A or B dimension equal to 22" or bigger have been double bent for greater rigidity. Made from 14 GA steel and finished with white, heat fused powder paint electrostatically applied on

a pretreated base.

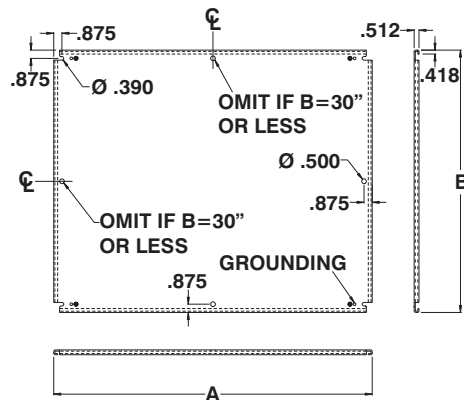
Panels are also available in **galvanized steel or aluminum**.

**Contact EXM for details**

**Refer to p.727 to validate choice of substrate for the application**

CATALOG NUMBER	DIMENSIONS		SHIP WGHT LBS.
	A	B	
882 SP1212	10	10	2
882 SP1612	14	10	3
882 SP1616	14	14	5
882 SP2012	18	10	4
882 SP2016	18	14	6
882 SP2020	18	18	8
882 SP2412	22	10	6
882 SP2416	22	14	8
882 SP2420	22	18	11
882 SP2424	22	22	13
882 SP3012	28	10	8
882 SP3016	28	14	11
882 SP3020	28	18	13
882 SP3024	28	22	16
882 SP3030	28	28	20
882 SP3624	34	22	19
882 SP3630	34	28	24

CATALOG NUMBER	DIMENSIONS		SHIP WGHT LBS.
	A	B	
882 SP3636	34	34	29
882 SP4224	40	22	23
882 SP4230	40	28	28
882 SP4236	40	34	34
882 SP4242	40	40	40
882 SP4824	46	22	26
882 SP4830	46	28	32
882 SP4836	46	34	39
882 SP4842	46	40	46
882 SP4848	46	46	52
882 SP5442	54	42	54
882 SP6024	58	22	32
882 SP6030	58	28	41
882 SP6036	58	34	49
882 SP6042	58	40	57
882 SP7230	70	28	49
882 SP7236	70	34	59



## Perforated Inner panels

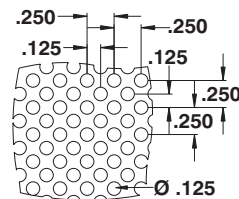
The **881 SP...P Series** perforated inner panels are designed to fit our ES and ESDD family of products and are also compatible with the 1100, 1100 W and 1100 CIP enclosures. Panels with the A or B dimension equal to 22" or

bigger have been double bent for greater rigidity. Made from 16 GA steel and finished with ASA-61 gray, heat fused powder paint electrostatically applied on a pretreated base.

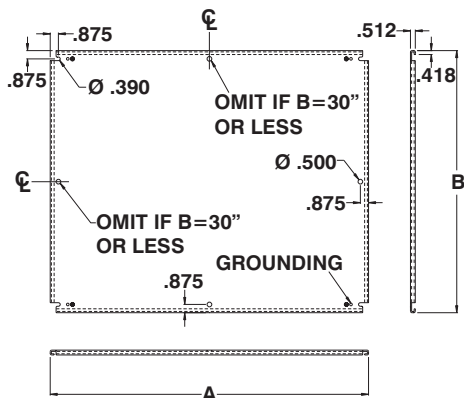
**Refer to p.727 to validate choice of substrate for the application**

CATALOG NUMBER	DIMENSIONS		SHIP WGHT LBS.
	A	B	
881 SP1212P	10	10	2
881 SP1612P	14	10	2
881 SP1616P	14	14	3
881 SP2012P	18	10	3
881 SP2016P	18	14	4
881 SP2020P	18	18	5
881 SP2412P	22	10	4
881 SP2416P	22	14	6
881 SP2420P	22	18	7
881 SP2424P	22	22	9
881 SP3012P	28	10	5
881 SP3016P	28	14	7
881 SP3020P	28	18	9
881 SP3024P	28	22	11
881 SP3030P	28	28	14
881 SP3624P	34	22	13
881 SP3630P	34	28	16

CATALOG NUMBER	DIMENSIONS		SHIP WGHT LBS.
	A	B	
881 SP3636P	34	34	20
881 SP4224P	40	22	15
881 SP4230P	40	28	19
881 SP4236P	40	34	23
881 SP4242P	40	40	27
881 SP4824P	46	22	17
881 SP4830P	46	28	22
881 SP4836P	46	34	26
881 SP4842P	46	40	31
881 SP4848P	46	46	35
881 SP5442P	52	40	36
881 SP6024P	58	22	22
881 SP6030P	58	28	27
881 SP6036P	58	34	33
881 SP6042P	58	40	38
881 SP7230P	70	28	33
881 SP7236P	70	34	40



Perforation pattern.



Note : For custom sizes and colors, please contact EXM.

To order inner panels with specific material, add appropriate suffix to the catalog number.

\* For Aluminum :

Add suffix 'AL' to the catalog number (ie. 881 SP4230PAL).

\* For Galvanized Steel :

Add suffix 'G' to the catalog number (ie. 881 SP4230PG).

\* For Stainless Steel:

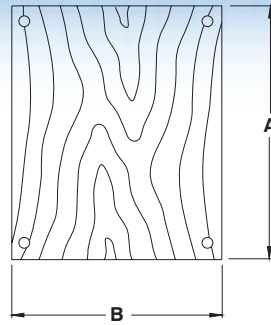
Add suffix "S" to the catalog number (ie. 880 SP4230PS)

Data subject to change without notice.

# PANELS, SUPPORT, SUN SHIELD, RELAY RACKS

## Wood panels for metering or current cabinets

CATALOG NUMBER	DIMENSIONS	
	A	B
880 MCPW2020	16	16
880 MCPW2713	23	9
880 MCPW3020	26	16
880 MCPW3030	26	26
880 MCPW3636	32	32
880 MCPW4848	44	44



## Panel support

The 880 IPS are designed to support the interior panel on the ES and ESDD family of enclosures. Sold in pairs, the supports are mounted between the interior panel and the bottom of the enclosure to reduce the load applied to the interior panel mounting studs.



CATALOG NUMBER	SHIP WGHT LBS
880 IPS	1

## Sun shield for 'ES' style enclosures

CATALOG NUMBER	DIMENSIONS	
	WIDTH	DEPTH
880 ESSS1206	12	6
880 ESSS1606	16	6
880 ESSS2006	20	6
880 ESSS2406	24	6
880 ESSS3006	30	6
880 ESSS1208	12	8
880 ESSS1608	16	8
880 ESSS2008	20	8
880 ESSS2408	24	8
880 ESSS3008	30	8
880 ESSS3608	36	8
880 ESSS1210	12	10
880 ESSS1610	16	10
880 ESSS2010	20	10
880 ESSS2410	24	10
880 ESSS3010	30	10

CATALOG NUMBER	DIMENSIONS	
	WIDTH	DEPTH
880 ESSS3610	36	10
880 ESSS1612	16	12
880 ESSS2012	20	12
880 ESSS2412	24	12
880 ESSS3012	30	12
880 ESSS3612	36	12
880 ESSS2016	20	16
880 ESSS2416	24	16
880 ESSS3016	30	16
880 ESSS3616	36	16
880 ESSS2420	24	20
880 ESSS3020	30	20
880 ESSS3620	36	20
880 ESSS2424	24	24
880 ESSS3024	30	24



## Hinged relay racks

The 889 HRR hinged relay racks are well suited for electronics applications and are compatible with standard 19" and 24" racks and panels. They are designed to fit the 9000 series cabinet racks, are made from 12 GA steel and are fin-

ished with heat fused powder paint, electrostatically applied on a pre-treated base. Finish is ANSI/ASA 61 gray.

**Refer to p.727 to validate choice of substrate for the application**

CATALOG NUMBER	DIMENSIONS 19" RACK		SHIP WGHT LBS.
	HEIGHT	WIDTH	
889 HRR6024	60	24	41
889 HRR7224	72	24	46
889 HRR9024	90	24	51

CATALOG NUMBER	DIMENSIONS 24" RACK		SHIP WGHT LBS.
	HEIGHT	WIDTH	
889 HRR6030	60	30	46
889 HRR7230	72	30	51
889 HRR9030	90	30	56



Data subject to change without notice.

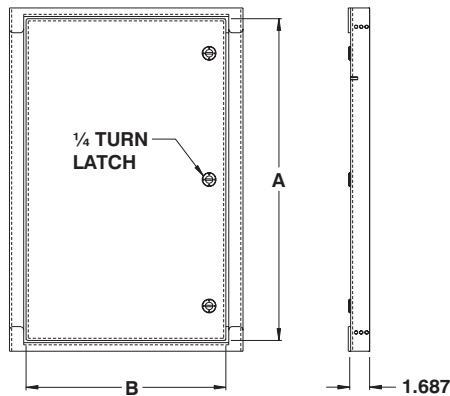


# SWING OUT PANELS

## Swing out panels for medium to large enclosures

The **880 SKWHD** swing out panels for medium to large enclosures are made to be used with all single door enclosures 12" to 72" high. Kits can be mounted by piercing small holes on the sides of the enclosures and are mount-

ed with screws. All hardware and mounting instructions are included. Finish is ANSI/ASA 61 gray heat fused powder paint, electrostatically applied on a pretreated base.

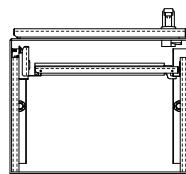
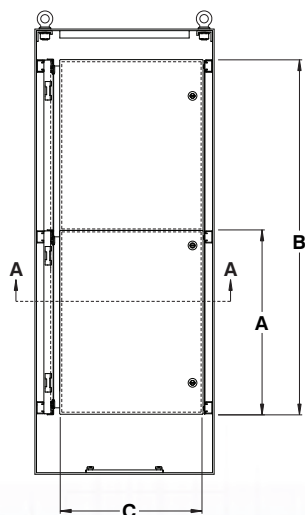


CATALOG NUMBER	DIMENSIONS		SHIP WGHT LBS.
	A	B	
880 SKWHD1212	9.500	9.000	2
880 SKWHD1224	9.500	21.000	7
880 SKWHD1612	13.500	9.000	4
880 SKWHD1616	13.500	13.000	6
880 SKWHD1620	13.500	17.000	7
880 SKWHD2012	17.500	9.000	6
880 SKWHD2016	17.500	13.000	7
880 SKWHD2020	17.500	17.000	9
880 SKWHD2024	17.500	21.000	13
880 SKWHD2412	21.500	9.000	7
880 SKWHD2416	21.500	13.000	9
880 SKWHD2420	21.500	17.000	13
880 SKWHD2424	21.500	21.000	15
880 SKWHD2430	21.500	27.000	19
880 SKWHD3012	27.500	9.000	14
880 SKWHD3016	27.500	13.000	15
880 SKWHD3020	27.500	17.000	16
880 SKWHD3024	27.500	21.000	19
880 SKWHD3030	27.500	27.000	24
880 SKWHD3036	27.500	33.000	20
880 SKWHD3624	33.500	21.000	24
880 SKWHD3630	33.500	27.000	30
880 SKWHD3636	33.500	33.000	37
880 SKWHD4224	39.500	21.000	28
880 SKWHD4230	39.500	27.000	35
880 SKWHD4236	39.500	33.000	43
880 SKWHD4824	45.500	21.000	32
880 SKWHD4830	45.500	27.000	40
880 SKWHD4836	45.500	33.000	49
880 SKWHD6036	57.500	33.000	61
880 SKWHD7230	69.500	27.000	70
880 SKWHD7236	69.500	33.000	32

## Swing out panels for free standing enclosures

The **889 SW** swing out panels are made from mild steel. Panels are hinged continuously on one side and are secured with quarter turn latches. Panels mount easily on

channels provided in the cabinet. Finish is white heat fused powder paint, electrostatically applied on a pretreated base.



CATALOG NUMBER	DIMENSIONS HALF PANEL		SHIP WGHT LBS.
	A	C	
889 SWH6018	24.875	13.3	17
889 SWH6024	24.875	19.3	26
889 SWH7218	30.875	13.3	22
889 SWH7224	30.875	19.3	32
889 SWH7230	30.875	25.3	43
889 SWH7236	30.875	31.3	54
889 SWH9024	39.875	19.3	42
889 SWH9036	39.875	31.3	70

CATALOG NUMBER	DIMENSIONS FULL PANEL		SHIP WGHT LBS.
	B	C	
889 SWF6018	48	13.3	34
889 SWF6024	48	19.3	52
889 SWF7218	60	13.3	44
889 SWF7224	60	19.3	64
889 SWF7230	60	25.3	86
889 SWF7236	60	31.3	108
889 SWF9024	78	19.3	84
889 SWF9036	78	31.3	140

Data subject to change without notice.

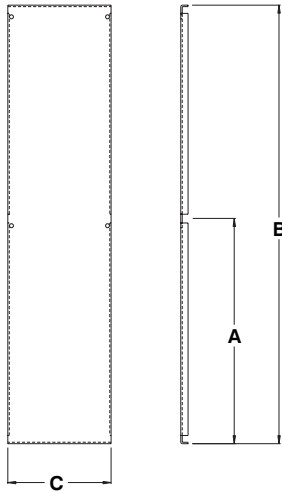


# SIDE PANELS

## Side panels for free standing enclosures

The 889 SP side panels are made from 11 GA steel and mount on channels provided in the cabinets. All full sized panels have a lip on height to increase rigidity.

Panels are finished with white heat fused powder paint, electrostatically applied on a pretreated base.



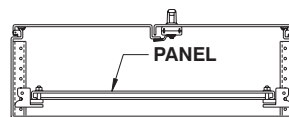
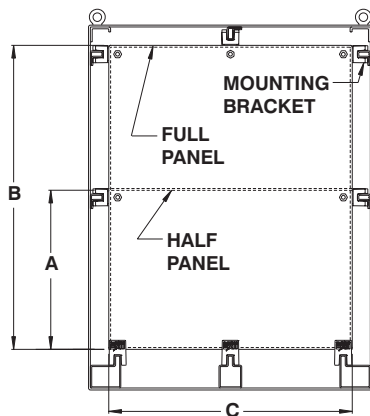
CATALOG NUMBER	DIMENSIONS HALF PANEL		SHIP WGHT LBS.
	A	C	
889 HSP6018	24	12.500	11
889 HSP6024	24	18.500	20
889 HSP7218	30	12.500	14
889 HSP7224	30	18.500	21
889 HSP7230	30	24.500	22
889 HSP7236	30	30.500	23
889 HSP9020	39	14.500	26
889 HSP9024	39	18.500	28
889 HSP9036	39	30.500	31

CATALOG NUMBER	DIMENSIONS FULL PANEL		SHIP WGHT LBS.
	B	C	
889 FSP6018	48	12.500	23
889 FSP6024	48	18.500	38
889 FSP7218	60	12.500	27
889 FSP7224	60	18.500	42
889 FSP7230	60	24.500	44
889 FSP7236	60	30.500	47
889 FSP9020	78	14.500	55
889 FSP9024	78	18.500	57
889 FSP9036	78	30.500	60

## Back panels for 9500 free standing enclosures

The 889 FP & HP back panels for the 9500 free standing single and double door enclosures are made from 12 GA steel and mount on brackets provided in the cabinets. All full sized panels have a lip in

order to increase rigidity. Panels are finished with white heat fused powder paint, electrostatically applied on a pretreated base.



CATALOG NUMBER	DIMENSIONS HALF PANEL		SHIP WGHT LBS.
	A	C	
889 HP6024	24.875	20	20
889 HP6036	24.875	32	28
889 HP6048	24.875	44	37
889 HP7224	30.875	20	23
889 HP7230	30.875	26	29
889 HP7236	30.875	32	34
889 HP7248	30.875	44	45
889 HP7260	30.875	56	56
889 HP7272	30.875	68	62
889 HP9024	39.875	20	28
889 HP9036	39.875	32	43
889 HP9048	39.875	44	57
889 HP9072	39.875	68	86

CATALOG NUMBER	DIMENSIONS FULL PANEL		SHIP WGHT LBS.
	B	C	
889 FP6024	48	20	37
889 FP6036	48	32	54
889 FP6048	48	44	72
889 FP7224	60	20	44
889 FP7230	60	26	55
889 FP7236	60	32	66
889 FP7248	60	44	88
889 FP7260	60	56	110
889 FP7272	60	68	132
889 FP9024	78	20	55
889 FP9036	78	32	84
889 FP9048	78	44	112
889 FP9072	78	68	169

Data subject to change without notice.



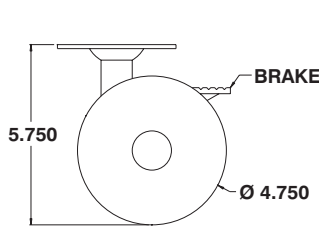
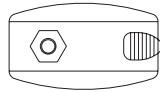
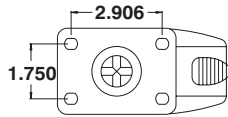
# CASTOR WHEELS, EYEBOLTS, PAINT

## Castor wheels - Series 880 C

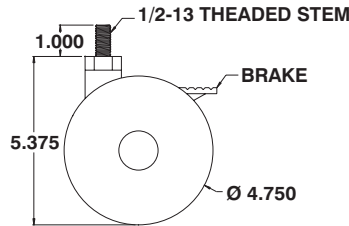
The **880 C** castor wheels can be mounted on a rack base. They are available with top plate (880 C100) or with threaded stem (880

C200). Castor wheels are available with or without brakes and have a load capacity of 250lbs.

CATALOG NUMBER	BRAKE ?	SHIP WGHT LBS.
880 C100	No	1
880 CB100	Yes	1
880 C200	No	1
880 CB200	Yes	1



TOP PLATE



THREADED STEM



## Lifting eyebolts - Series 880 EB

The **880 EB** are cast lifting eyebolts used to facilitate cabinet handling.

The **880 EBxSS** are made of stainless steel.

The eyebolts come complete with washers and nuts



CATALOG NUMBER	THREAD	PIECES	SHIP WGHT LBS.
880 EB14	M14	2	1
880 EB14SS	M14	2	1
880 EB12	M12	2	1
880 EB12SS	M12	2	1

## Touch up paint - Series 880 P

The **880 P** touch up spray paint cans are exact color match enamel paints in 12 oz. spray cans.



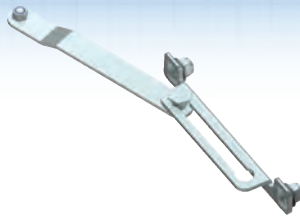
CATALOG NUMBER	COLOR	SHIP WGHT LBS.
880 PE	White	1
880 PTE	Textured white	1
880 PG	ANSI/ASA 61 Gray	1
880 PG2	ANSI/ASA 70 Gray	1
880 PTG	Textured gray	1
880 PG20	Textured red (RAL3002)	1
880 PY	Yellow	1
880 PO	Matadore orange	1
880 PV	Egg shell green	1
880 PTB	Textured blue	1
880 PTC	Beige (RAL7032)	1
880 PSC	Sandtex beige	1
880 PSG	Sandtex gray	1
880 PTD	Textured dark blue	1
880 PTK	Textured black	1
880 PGL	Mtrx gray (RAL7035)	1

Data subject to change without notice.

# DOOR ACCESSORIES

## Door stop kit for the ES enclosures, external mounting

The **886 DS2** door stop kits limit the opening of the doors on the ES family of products. Kits include mounting hardware and are available for external mounting on the top flange of the enclosure (886 DS2T and 886 DS2TSS) or the bottom (886 DS2B and 886 DS2BSS)



CATALOG NUMBER	LOCATIONS	SHIP WGHT LBS.
886 DS2B	Bottom	1
886 DS2T	Top	1
886 DS2BSS	Bottom (Stainless)	1
886 DS2TSS	Top (Stainless)	1

## Door stop kit for the ES enclosures, internal mounting

The **886 DS5** door stop kits limit the opening of the doors on the ES family of products. Kits include mounting hardware and are available for internal mounting on the top or bottom of the enclosure.



CATALOG NUMBER	LOCATIONS	SHIP WGHT LBS.
886 DS5	Top or bottom	1

## Door stop kit for the ES enclosures, gas spring

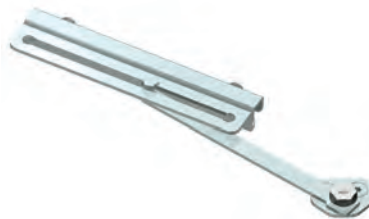
The **886 DS7** gas spring door stop kits limit the opening of the doors on the ES family of products. Kits include mounting hardware and are available for internal mounting on the top or bottom flange of the enclosure.



CATALOG NUMBER	LOCATIONS	SHIP WGHT LBS.
886 DS7	Top or bottom	1

## Door stop kit for large cabinets

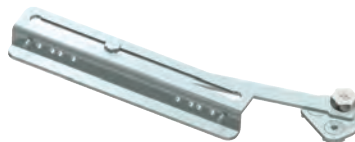
The **886 DS6** door stop kits limit the opening of the doors on the large 5500 and 9500 cabinets. Kits include mounting hardware and are available for internal mounting on the top or bottom flange of the enclosure.



CATALOG NUMBER	LOCATIONS	SHIP WGHT LBS.
886 DS6	Top or bottom	1

## Door stop kit for Mtrx cabinets

The **886 DS4** door stop kits limit the opening of the single or double door bay Mtrx cabinets. Kits include mounting hardware and are available for internal mounting on the top or bottom flange of the enclosure.



CATALOG NUMBER	LOCATIONS	SHIP WGHT LBS.
886 DS4	Top or bottom	1

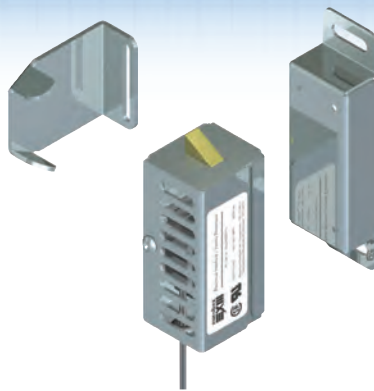
Data subject to change without notice.



# DOOR ACCESSORIES

## Electrical Interlock

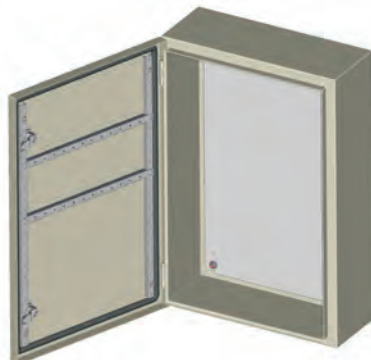
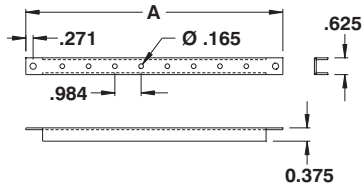
The **880 EI** electrical interlock is used to restrict access while equipment power is on. It is compatible with the ES family of products. Kit includes a disconnect device, mounting hardware and instructions.



CATALOG NUMBER	VOLTAGE	SHIP WGHT LBS.
880 EI115	115 V	1
880 EI230	230 V	1
880 EI460	460 V	1

## Horizontal door rails - Series 885 DR

The **885 DR** horizontal door rails are designed to bring versatility and increase mounting capacity for our ES style enclosures. Door rails are made of 16 GA steel and the finish is zinc plated.



CATALOG NUMBER	A	ENCLOSURE WIDTH	SHIP WGHT LBS.
885 DR12	8.562	12	1
885 DR16	12.562	16	1
885 DR20	16.562	20	1
885 DR24	20.562	24	1
885 DR30	26.562	30	1
885 DR36	32.562	36	2
* 885 DRL24	19.468	24	1
* 885 DRL30	25.468	30	1
* 885 DRL36	31.468	36	2

\* To be use with 3 point lock ES style enclosures

## External drip shield - Series 880 ESDS

The **880 ESDS** drip shields are used to further protect the contents of ES style enclosures from the elements. They are made of quality code gauge steel and come complete with all installation hardware.



CATALOG NUMBER	WIDTH	NUMBER OF HOLES	SHIP WGHT LBS.
880 ESDS12	12	2	1
880 ESDS16	16	2	1
880 ESDS20	20	2	2
880 ESDS24	24	2	2
880 ESDS30	30	3	3
880 ESDS36	36	3	3
880 ESDS42	42	3	3
880 ESDS48	48	3	3
880 ESDS60	60	4	5
880 ESDS72	72	4	6

Data subject to change without notice.

# DOOR ACCESSORIES

## Hinges ESCH

The **880 HESCH** hinges are used on the ESCH family enclosures. The hinges have an exclusive concealed hinge pin and attach to the enclosure with M5 hardware. Sold in packs of 2.



CATALOG NUMBER	MATERIAL	SHIP WGHT LBS.
880 HESCHZ	Zinc Cast	1
880 HESCH1SS	Stainless Steel	1

## Hinges CH

The **880 HCH** hinges are used on the CH enclosures family. The zinc cast hinges have an exclusive concealed hinge pin and attach to the enclosure with M5 hardware. Sold in packs of 2.



CATALOG NUMBER	MATERIAL	SHIP WGHT LBS.
880 HCH1Z	Zinc Cast	1

## Hinges ES - ESDD

The **880 HES** hinges are used on the ES and ESDD enclosures family (page iv and v). The 880 HES1Z and 880 HES1SS have retained sliding pins, the 880 HES2Z is a mono-block construction. Both attach to the enclosure with M6 hardware. Sold in packs of 2.



CATALOG NUMBER	MATERIAL	SHIP WGHT LBS.
880 HES1Z	Zinc Cast	1
880 HES2Z	Zinc Cast	1
880 HES1SS	Stainless Steel	1

## Hinges, free-standing cabinets

The **880 HFC** hinges are used on the freestanding cabinet family (page viii). These hinges have heavy duty 6.3mm pins and attach to the enclosure with M6 hardware. Sold in packs of 2.



CATALOG NUMBER	MATERIAL	SHIP WGHT LBS.
880 HFC1Z	Zinc Cast	1
880 HFC1SS	Stainless Steel	1

## Hinges, lay-in wireways and commercial enclosures

The **880 HLW** hinges are used on the freestanding cabinet family (page viii). The 880 HE1 are clip-on and made from plated spring steel, the 880 HLW1Z is made from zinc casting. Sold in packs of 10.



CATALOG NUMBER	LAY-IN NEMA TYPE	SHIP WGHT LBS.
880 HE1	1	1
880 HLW1Z	4-4X-12	1

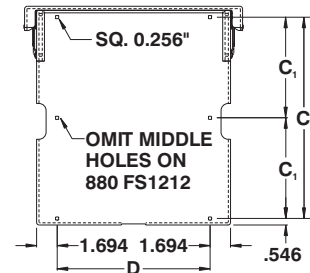
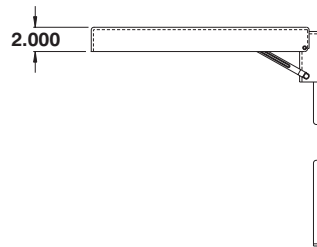
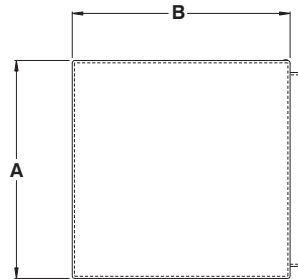
Data subject to change without notice.

# SHELVES, POLE MOUNT, DEPTH ADJUSTER

## Folding shelves

The **880 FS** folding shelves are designed to support computer keyboards, monitors or other PC accessories. Can be installed on the inside or the outside surface of the cabinet. Locks in a horizontal position. Folds for easy hiding. Finish is white heat fused powder paint, electrostatically applied on a pretreated base.

CATALOG NUMBER	A	B	C <sub>1</sub>	C <sub>2</sub>	D	SHIP WGHT LBS.
880 FS1212	12.000	12.000	---	10.625	6.625	10
880 FS1818	18.000	18.000	8.312	---	12.625	15



## Pole mounting kit

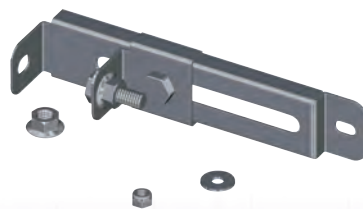
The **880 PM** pole mounting kit is used to mount 'ES' series enclosures to poles of different shapes and sizes. Kits include two mounting channels, two stainless steel straps for poles up to 12" in diameter and installation hardware.



CATALOG NUMBER	ENCLOSURE WIDTH
880 PM12	12
880 PM16	16
880 PM20	20
880 PM24	24
880 PM30	30
880 PM36	36

## Inner panel depth adjuster

The **885 IPDA** inner panel depth adjusters are used to permit adjustments to our inner panel depth on 'ES' style enclosures. Comes in packs of four. Finish is zinc plated.



CATALOG NUMBER	ENCLOSURE DEPTH	SHIP WGHT LBS.
885 IPDA6	6	2
885 IPDA8	8	2
885 IPDA10	10	3
885 IPDA12	12	4

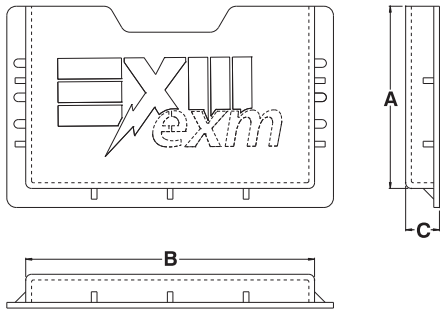
Data subject to change without notice.

# PRINT POCKETS

## Plastic print pockets - Series 880 PP/PPL

The **880 PP** Print pockets are made in plastic and are installed using self adhesive backing or using the mounting holes provided for M6 studs. Finish is red.

CATALOG NUMBER	DIMENSIONS			SHIP WGHT LBS.
	A	B	C	
880 PP	6	9.5	1	1
880 PPL	12	12	1	1

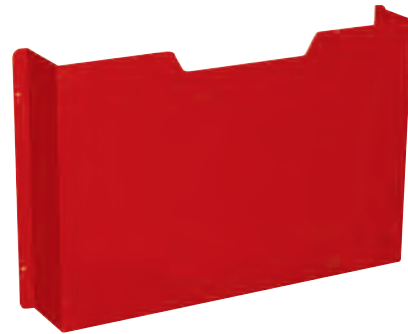
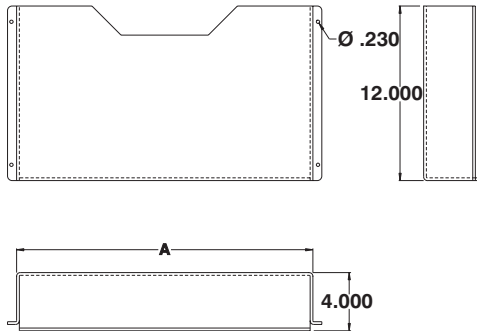


## Metal print pockets - Series 880 PPXL

The **880 PPXL** Extra large metal print pockets are made of 14 GA steel and are installed on vertical rails. They are for use with ES enclosures. Finish is red heat fused powder paint, electrostatically applied on a pretreated base.

CATALOG NUMBER	DIMENSIONS	SHIP WGHT LBS.
	A	
880 PPXL24	20.375	8
880 PPXL30	26.375	10
880 PPXL36	32.375	12
* 880 PPXLL24	18.206	7
* 880 PPXLL30	24.206	9
* 880 PPXLL36	30.206	11

\* To be use with 3 point lock ES style enclosures



## External print pocket - Series 880 PPEX

The **880 PPEX External print pockets with lid** are made of 18 GA steel and can be installed on any outside enclosure surface. The print pockets will accommodate standard B size binders either vertically or horizontally. Knockouts are supplied to mount an optional padlockable pull down hasp. Finished with ANSI/ASA 61 gray heat fused powder paint, electrostatically applied on a pretreated base. (other colors available).



CATALOG NUMBER	DIMENSIONS		
	H	W	D
880 PPEXV	18	12	3.5
880 PPEXH	13	18	3.5

\* Add suffix 'SS' for stainless

Data subject to change without notice.

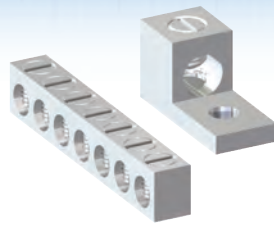


# GROUNDING ACCESSORIES

## Splitter trough grounding kits

The **881 GRC** are designed to be used with aluminum or copper conductors. Lugs are made from high strength, high conductive aluminum alloy. Kits come complete with installation hardware.

**C.S.A. approved.**

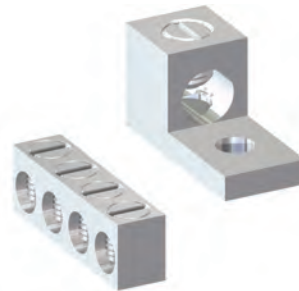


CATALOG NUMBER	MAX AMP. CU-AL	LUGS				SHIP WGHT LBS.
		QTY	WIRE RANGE	QTY	WIRE RANGE	
881 GRC200	200	7	2-14	-	-	1
881 GRC400	400	7	2-14	1	1/0-14	1
881 GRC600	600	7	2-14	1	300-6	1

## Splitter box grounding kits

The **881 GRB** are designed to be used with aluminum or copper conductors. Lugs are made from high strength, high conductive aluminum alloy. Kits come complete with installation hardware.

**C.S.A. approved.**



CATALOG NUMBER	MAX AMP. CU-AL	LUGS				SHIP WGHT LBS.
		QTY	WIRE RANGE	QTY	WIRE RANGE	
881 GRB200	200	4	2-14	-	-	1
881 GRB400	400	4	2-14	1	1/0-14	1
881 GRB600	600	4	2-14	1	300-6	1

## Junction box grounding kits

The **880 GC3** are designed to be used with aluminum or copper conductors. Lugs are made from high strength, high conductive aluminum alloy. Kits come complete with installation hardware. The 880 GC3 are sold in packs of 10)

**C.S.A. approved.**

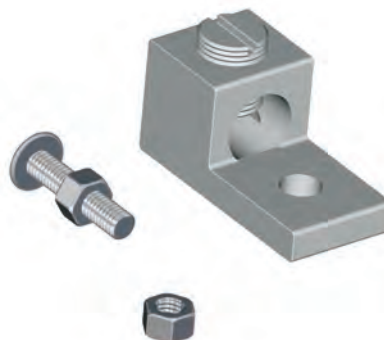


CATALOG NUMBER	LUGS		SHIP WGHT LBS.
	QTY	WIRE RANGE	
880 GC3	4	2-14	1

## Grounding kits

The **880 GC2** grounding kits are designed for use with both aluminum and copper conductors, from 14 to 2 GA AWG. Lugs are constructed from high strength, high conductive aluminum alloy 606-T6 plated over copper, rated at 90°C. The 880 GC2 are sold in packs of 10.

**C.S.A. approved.**



CATALOG NUMBER	SHIP WGHT LBS.
880 GC2	1

Data subject to change without notice.



# GROUNDING ACCESSORIES

## Grounding wires

The **880 GC1** grounding wires are 8½" long, made of flexible stranded copper wire and are colored yellow with green stripes. The 880 GC1 have ring-tongue terminals and are used to ensure proper bonding of the door to the

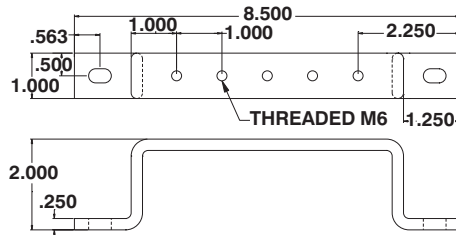
cabinet. Installation hardware, consisting of nuts, bolts and washers, is provided. The 880 GC1 are sold in packs of 10.

CATALOG NUMBER	SHIP WGHT LBS.
880 GC1	1

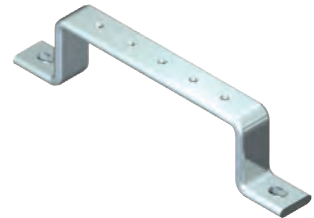


## Grounding bar

The **880 GRCB** are designed to permit installation of up to 5 grounding wires. Bars are threaded M6. If required, lugs are ordered separately (page 238). Kits come complete with installation hardware. The grounding bar is made of copper and is tin plated



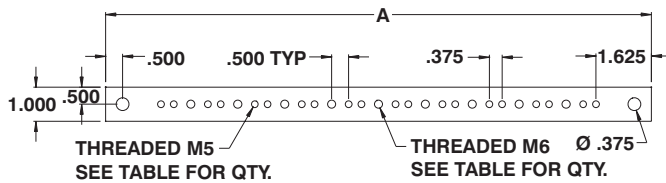
CATALOG NUMBER	SHIP WGHT LBS.
880 GRCB	2



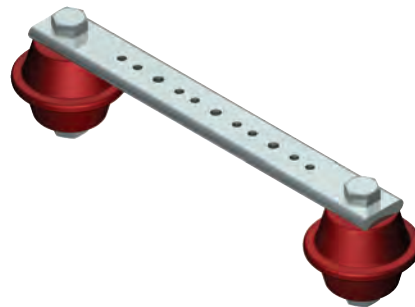
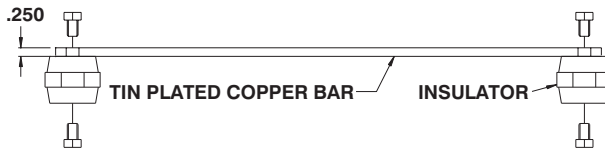
## Insulated grounding bars

The **880 GB** grounding bars come in three sizes, with indoor polyamide resin insulators. The grounding bar is made of copper and is tin plated

CATALOG NUMBER	A	M5	M6	SHIP WGHT LBS.
880 GB08	8	10	3	2
880 GB16	16	20	9	3
880 GB24	24	30	15	4

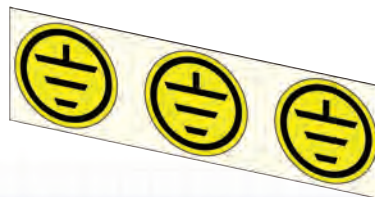


TOP VIEW WITHOUT INSULATOR



## Grounding stickers

The **880 GNDS01** grounding stickers are designed to indicate the area where grounding studs must be installed. They come in a slip of 3 by 10 and are sold in packs of 100. Each have a radius of 18mm.



CATALOG NUMBER	SHIP WGHT LBS.
880 GNDS01	1

Data subject to change without notice.

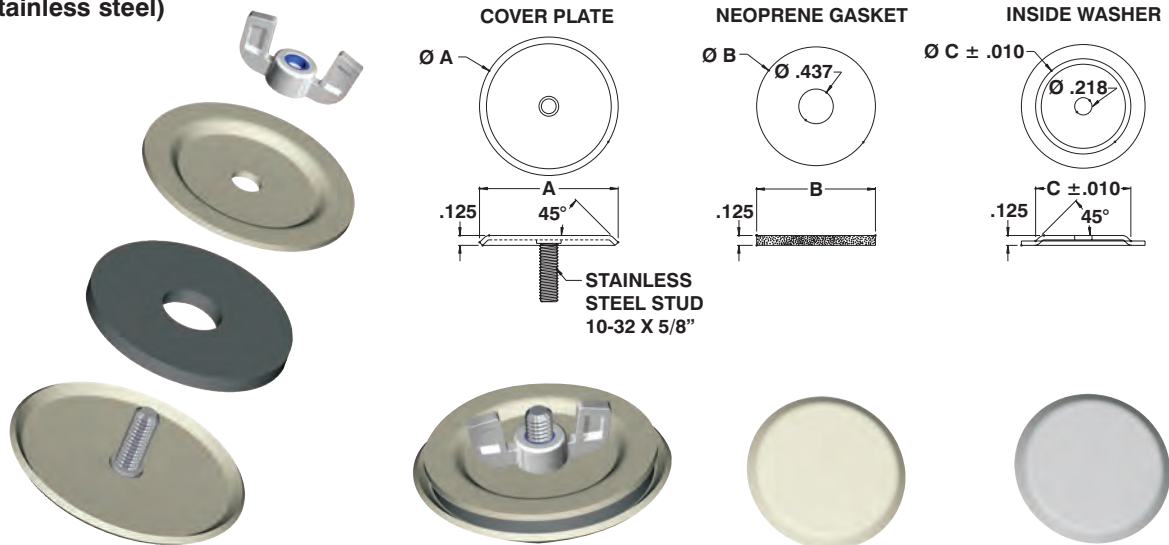


# PUSHBUTTON HOLE PLUGS

## Metal pushbutton hole plugs

The **880 HP** pushbutton hole plugs are made to cover the unused holes on the pushbutton enclosures. They are fixed with an anti-vibration wing nylon lock. Plugs are available for several hole sizes in gray (ASA 61) powder painted steel or brushed #4 stainless steel and come complete with a dust tight oil resistant gasket and installation hardware. **CSA Certified / UL Listed.** **NEMA/EEMAC 4-12 IP66 (Galvanized)** **NEMA/EEMAC 4X IP66 (Stainless steel)**

CATALOG NUMBER		SPECIFICATIONS			
STEEL	STAINLESS	HOLE PLUG	A	B	C
880 HP1	880 HP1SS	22.5mm pushbutton	1.218	0.968	0.875
880 HP0500	880 HP0500SS	1/2" conduit hole	1.375	1.125	0.875
880 HP0750	880 HP0750SS	3/4" conduit hole	1.562	1.312	1.062
880 HP2	880 HP2SS	30.5mm pushbutton	1.750	1.500	1.203
880 HP1000	880 HP1000SS	1" conduit hole	1.875	1.625	1.344
880 HP1250	880 HP1250SS	1 1/4" conduit hole	2.187	1.937	1.687
880 HP1500	880 HP1500SS	1 1/2" conduit hole	2.500	2.250	1.968
880 HP2000	880 HP2000SS	2" conduit hole	3.000	2.750	2.468
880 HP2500	---	2 1/2" conduit hole	3.500	3.250	3.000
880 HP3000	---	3" conduit hole	4.125	3.875	3.625
880 HP3500	---	3 1/2" conduit hole	4.625	4.375	4.125
880 HP4000	---	4" conduit hole	5.125	4.875	4.625



## Plastic plug buttons

The **880 HPPL** plastic plug buttons are made to cover the unused pushbutton holes on the pushbutton enclosures. Hole plugs are available for standard or miniature holes in black plastic.



CATALOG NUMBER	SPECIFICATION	SHIP WGHT LBS.
880 HP1PL	22.5mm pushbutton	1
880 HP2PL	30.5mm pushbutton	1
880 HP3PL	76.2mm pushbutton	1

## Anti-vibration wing nut

The **880 HDWN** anti-vibration wing nuts are designed to be used when particular types of M5 fasteners need to be tightened or loosened frequently without the use of tools. It has a nylon insert to capture the bolt or screw which provides a locking feature.



CATALOG NUMBER	THREAD	SHIP WGHT LBS.
880 HDWN	M5 (metric)	1

Data subject to change without notice.

# HARDWARE, GASKET

## Hardware kits

The **880 K** hardware kits are used when additional parts are required to replace the hardware which was supplied with the enclosures.

These kits can be used in case of loss of the original kits or when the existing enclosures must be re-worked or upgraded or for any other purpose.

Most hardware kits include anti-vibration screws, nuts and bolts. This helps to ensure installation integrity, even in mobile applications.

CATALOG NUMBER	DESCRIPTION		
	FOR USE WITH	DESCRIPTION	PACKS OF
880 K00200	880 SP	Set of six M6 x 8 screws used to mount ESCH panels	20
880 K01310	881 SP	Set of two flange lock nuts M8 used to mount ES panels	20
880 K02700	1100, 5100 ES, 5100 ESCH...	Rubber bumpers	50
880 K03000	5100 ES	M10 plugs	50
880 K02810	1100 MC	Hardware kit for 1100 MC	10
880 K03100	1300 CH	Hardware kit for 1300 CH	10
880 K02910	5412 ESCH	Hardware kit for 5412 ESCH	10
880 K02940	5412 ESCHB	Hardware kit for 5412 ESCHB	10
880 K02930	5412 ESLC	Hardware kit for 5412 ESLC	10
880 K02900	5412 ESSC	Hardware kit for 5412 ESSC (old model)	10
880 K02920	5412 ESSC	Hardware kit for 5412 ESSC (new model)	10
880 K01800	5412 ES	Hardware kit for 5412 ES (includes ground strap)	10
880 K03400	5412 ESFRS	Hardware kit for 5412 ESFRS	10
880 K03300	5412 ESFRH	Hardware kit for 5412 ESFRH	10
880 K03500	5412 ESFRQ	Hardware kit for 5412 ESFRQ	10

## Closing plates for disconnect cutouts

The **880 ADCP1** are used to cover the disconnect cutout to preserve the integrity of the enclosure when a disconnect is not used. The closing plates are made from 11 GA steel and are supplied with all the required hardware. An oil resistant gasket is used to implement NEMA 12 standards.



CATALOG NUMBER	PRODUCTION MATERIAL	SHIP WGHT LBS.
880 ADCP1	Gray powder coated steel	1
880 ADCP1SS	Brushed stainless steel	1

## Gas spring cylinder

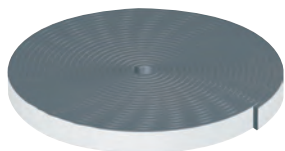
The **880 GS** gas spring cylinders are available with two different pressure strengths. Two fixing brackets are included with each cylinder.



CATALOG NUMBER	STROKE	LENGTH	FORCE	SHIP WGHT LBS.
	880 GS080	90mm	254mm	
880 GS115	90mm	254mm	115N	1

## Self-adhesive gasket tape

The **880 GA** gasket tape is used as general purpose gasket and is ordered in lengths of 35 feet. Made of self-adhesive neoprene.



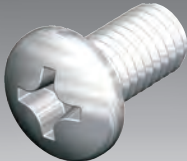
CATALOG NUMBER	THICKNESS	WIDTH	SHIP WGHT LBS.
	880 GA0750	0.2500"	
880 GA1000	0.2500"	1.000"	1

Data subject to change without notice.

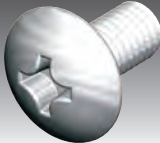
# HARDWARE

## Hardware - Screws


### STEEL MACHINE SCREWS - PAN HEAD PHILLIPS DRIVE

	CATALOG #	THREAD	LENGTH	PACKS	FOR USE WITH
	880 HDM0632	6-32 UNC	3/8"	100	General purpose
880 HDM0832	8-32 UNC	3/8"	100	General purpose	
880 HDM1024	10-24 UNC	3/8"	100	General purpose	
880 HDM1032	10-32 UNF	3/8"	100	General purpose	
880 HDM1224	12-24 UNC	3/8"	100	General purpose	
880 HDM2520	1/4"-20 UNC	3/8"	100	General purpose	
880 HDM3118	5/16"-18 UNC	1"	50	General purpose	
880 HDM3816	3/8"-16 UNC	1"	50	General purpose	
880 HDMM04	M4 (metric)	12mm	100	General purpose	
880 HDMM0425	M4 (metric)	25mm	50	6500 MXD flange door	
880 HDMM05	M5 (metric)	12mm	100	General purpose	
880 HDMM06	M6 (metric)	12mm	100	General purpose	
880 HDMM08	M8 (metric)	25mm	50	6500 MXM mounting panel	
880 HDMM10	M10 (metric)	25mm	50	General purpose	

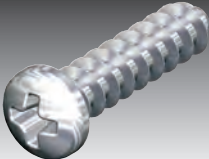
### STEEL MACHINE SCREWS - TRUSS HEAD PHILLIPS DRIVE

	CATALOG #	THREAD	LENGTH	PACKS	FOR USE WITH
	880 HDMTM0612	M6 (metric)	12mm	100	6500 MXR / 6500 MXC covers
880 HDMTM0625	M6 (metric)	25mm	50	6500 MXD flange door	


### STEEL MACHINE SCREWS - FLAT HEAD PHILLIPS DRIVE

	CATALOG #	THREAD	LENGTH	PACKS	FOR USE WITH
	880 HDMFM0616	M6 (metric)	16mm	50	6500 MXB base / 6500 MXD doors

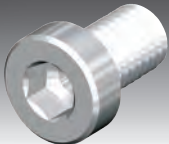
### STEEL SELF TAPPING SCREWS - PAN HEAD PHILLIPS DRIVE

	CATALOG #	THREAD	LENGTH	PACKS	FOR USE WITH
	880 HDT04	#4 / .100 hole	1/2"	100	General purpose
880 HDT06	#6 / .116 hole	1/2"	100	General purpose	
880 HDT08	#8 / .136 hole	1/2"	100	6500 MXD door stiffeners and rails	
880 HDT081	#8 / .136 hole	1"	50	6500 MXD locking door handle	
880 HDT10	#10 / .152 hole	1/2"	100	6500 MXG grid rails	
880 HDT12	#12 / .177 hole	1/2"	100	General purpose	
880 HDT14	#14 / .199 hole	1/2"	100	6500 MX frame (M5 thread)	

### STEEL THREAD ROLLING SCREWS - THREAD CUTTING PHILLIPS DRIVE

	CATALOG #	THREAD	LENGTH	PACKS	FOR USE WITH
	880 HDTRM0610	M6 (metric)	10mm	100	General purpose

### STEEL HEX SOCKET CAP SCREWS


	CATALOG #	THREAD	LENGTH	PACKS	FOR USE WITH
	880 HDHXM0812	M8 (metric)	12mm	100	6500 MXM mounting panel

Data subject to change without notice.

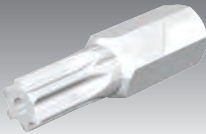
# HARDWARE

## Hardware - Nuts & Screws

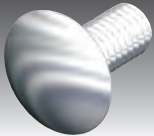
### TAMPER RESISTANT SCREWS

	CATALOG #	THREAD	LENGTH	PACKS	DRIVE SIZE	MATERIAL
	880 HDTZS0512	M5 (metric)	12mm	10	T25	Steel zinc plated
	880 HDTZS0612	M6 (metric)	12mm	10	T30	Steel zinc plated
	880 HDTZS0625	M6 (metric)	25mm	10	T30	Steel zinc plated
	880 HDTSS0512	M5 (metric)	12mm	10	T25	Stainless steel
	880 HDTSS0612	M6 (metric)	12mm	10	T30	Stainless steel
	880 HDTSS0625	M6 (metric)	25mm	10	T30	Stainless steel

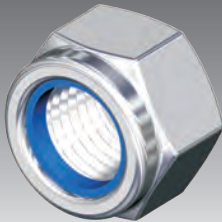
### BITS FOR TAMPER RESISTANT SCREWS

	CATALOG #	THREAD	PACKS	FOR USE WITH
	880 HDTBIT25	T25	1	Magnetic driver
	880 HDTBIT30	T30	1	Holder 880 HDDR
	880 HDDR	-	1	Magnetic driver holder


### STEEL CARRIAGE BOLT - ROUND HEAD SQUARE NECK

	CATALOG #	THREAD	LENGTH	PACKS	FOR USE WITH
	880 HDCM05	M5 (metric)	9mm	100	General purpose
	880 HDCM06	M6 (metric)	13mm	100	1500 lay-in ducts
	880 HDCM08	M8 (metric)	22mm	100	6500 MXJO joining brackets


### STEEL HEX NUTS FOR MACHINE SCREWS - WITH NYLON LOCK

	CATALOG #	THREAD	PACKS	FOR USE WITH
	880 HDN0632	6-32 UNC	100	General purpose
	880 HDN0832	8-32 UNC	100	General purpose
	880 HDN1024	10-24 UNC	100	General purpose
	880 HDN1032	10-32 UNF	100	General purpose
	880 HDN1224	12-24 UNC	100	General purpose
	880 HDN2520	1/4"-20 UNC	100	General purpose
	880 HDN3118	5/16"-18 UNC	100	General purpose
	880 HDN3816	3/8"-16 UNC	100	General purpose
	880 HDNM04	M4 (metric)	100	6500 MXD flange door
	880 HDNM05	M5 (metric)	100	5412 ESCH ground nut
	880 HDNM06	M6 (metric)	100	5412 ES / Mtrx ground nut
	880 HDNM08	M8 (metric)	100	6500 MXJO joining brackets
	880 HDNM10	M10 (metric)	100	9500 cabinets

### STEEL FRONT INSERTED CLIP NUTS

	CATALOG #	THREAD	PACKS	FOR USE WITH
	880 HDFM06	M6 (metric)	100	6500 MX frame / 6500 MXG grid rails
	880 HDFM08	M8 (metric)	100	6500 MX frame / 6500 MXG grid rails

### STEEL STANDARD CAGE NUTS

	CATALOG #	THREAD	PACKS	FOR USE WITH
	880 HDP2520	1/4"-20 UNC	100	6500 MXL rack angles
	880 HDP3118	5/16"-18 UNC	100	6500 MXG grid rails
	880 HDPM05	M5 (metric)	100	6500 MXL rack angles
	880 HDPM06	M6 (metric)	100	6500 MXL rack angles
	880 HDPM08	M8 (metric)	100	6500 MXG grid rails

Data subject to change without notice.

