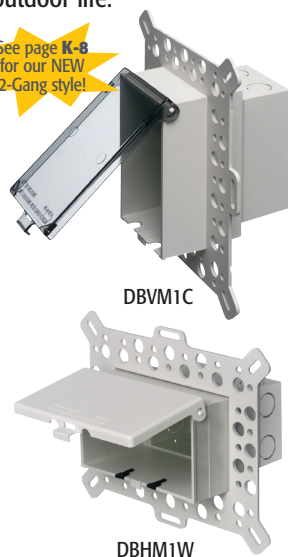


Low Profile IN BOX™ for New Construction Stucco, Textured Surfaces, and Rigid Siding

One-piece, recessed electrical box with weatherproof-in-use extra-duty cover for stucco over masonry or wood construction. Also for cementitious/fiber rigid lap siding. Non-metallic cover and base. Accepts most single gang wiring devices and uses standard indoor wall plates or a GFCI cover plate. Box and white cover are textured/paintable. UV rated plastic for long outdoor life.

See page K-8 for our NEW 2-Gang style!



FEATURES AND BENEFITS

- One-piece assembly replaces the installation of an electrical box and bubble cover assembly
- Installs in the wall, so less of it shows outside
- Holes in flange allow stucco to bond firmly
- Install option: Cover is removable for easier device installation

Scan For Video



CATALOG NUMBER	UPC/DCI/NAED MFG #018997	ORIENTATION/COVER COLOR	UNIT PKG	STD PKG	DIM A	DIM B	DIM C	DIM D	DIM E
DBVM1C	14315	Vertical/Clear	1	4	9.058	7.012	5.160	1.805	3.222
DBVM1W	14316	Vertical/White	1	4	9.058	7.012	5.160	1.805	3.222
DBHM1C	77608	Horizontal/Clear	1	4	7.012	9.058	5.160	1.805	3.222
DBHM1W	77610	Horizontal/White	1	4	7.012	9.058	5.160	1.805	3.222

Add suffix "GC" to Catalog # when ordering in Canada, for example DBVM1CGC.

Replacement covers available on page K-17.

2-Gang style available on page K-8.

PATENTED. ADDITIONAL PATENTS PENDING.

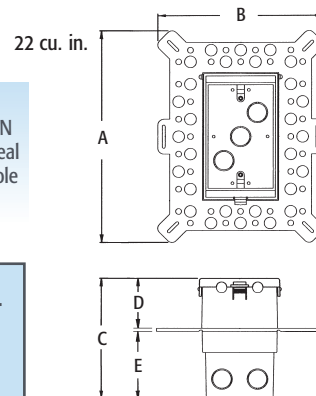


WEATHERPROOF-IN-USE

EXTRA-DUTY



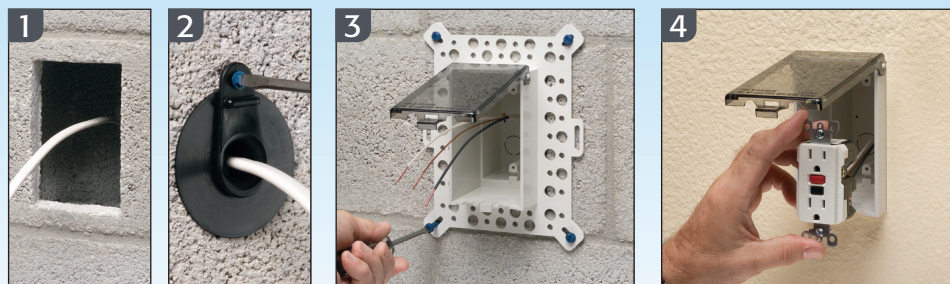
Bug Plugs ship installed in all IN BOX styles to seal unused cord hole openings.



IN BOX for new stucco, textured surfaces, and rigid siding includes... Box with weatherproof-in-use extra-duty cover; installed bug plugs; (1) standard duplex and (1) standard GFCI face plate; (1) NM cable connector; block bushing with washer; and an in-place, disposable mud cover.

Note: Additional Installation Methods shown on page K-4.

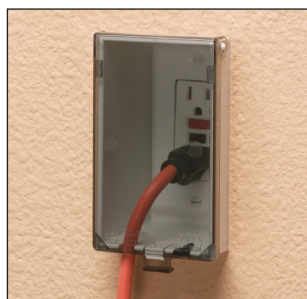
Installation Instructions for New Masonry Construction



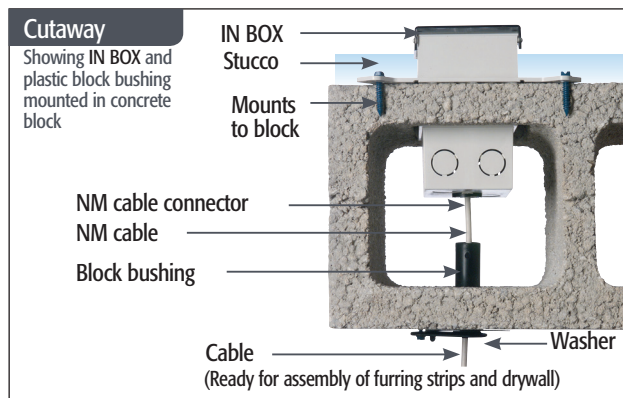
1. Make a 3-1/4" x 5-1/2" hole in block. Pull wiring through plastic block bushing and opening in block. Block bushing mounts to interior side of block.

2. Install NM cable connector and wire. Attach recessed IN BOX to block. Holes in flange allow stucco to bond firmly.

3. Install wiring device per manufacturer's instructions, Local, and National Electrical Codes. Accepts most devices and a standard indoor wall plate.



Completed installation with weatherproof-in-use cover. DBVM1C shown.



Note: Meets 2014 NEC Section 406.9; for the protection of exterior outlets which require the use of an extra-duty weatherproof while-in-use cover for all outdoor 15 or 20 AMP receptacles.