



Motor Lead Disconnect T&B Catalog Number:

MD6F-2
78621078687
Active

UPC Number:
Status:
Description:

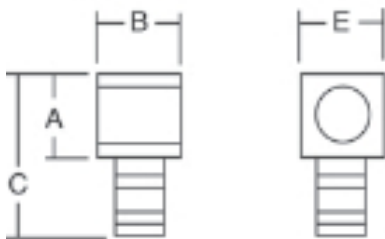
KUBE Female Copper Motor Pigtail Disconnect for Wire Size 6 AWG, Body Size 2, Die Color Blue

Features

Fast, snap-together assembly offers maximum labor savings. Not need for nuts, bolts and washers or insulating tape - simply slide on reusable boot.

Quick disconnect - no knife cutting of melted tape, eliminating the risk of accidental cutting of wire insulation, resulting motor downtime and installer exposure. Meets or exceeds electrical and mechanical performance of bolted connections.

Female disconnects equipped with beryllium copper louvered contact bands for dependable connections.



General

Style	Female
Material	Copper
Finish	Tin-Plated
Wire Size	#6 AWG
Strip Length (inches)	1/2
Die Color	Blue
Die Code	24
Body Size	2
Boot Insulation	MDBOOT2

Dimension Information

Strip Length (inches)	1/2
A (inches)	.50
B (inches)	.50
C (inches)	1.02
D (inches)	1.00
E (inches)	.50
F (inches)	.370

Specifications

Voltage Rating	600V
----------------	------

Tooling

Application Tools	TBM45S, TBM6, TBM6S, TBM5, TBM5S, TBM8, TBM8S
-------------------	---

Packaging

T&B Order Multiple	6
T&B Inner Pack	6
Package in Units	60
T&B Sold in UOM	Each
T&B Weight Per UOM	3.69 lbs. per 100

Application Support

T&B Instruction Sheets	ta00220-tb2
------------------------	-------------

Notes

Always use the same body size when selecting male and female disconnects. Use insulating boots matching the disconnect body size. To protect the connection from moisture and dirt, use sealing compound catalog number MDBOOT-SEAL.

Certifications

RoHS Compliance Yes

Certifications



File Nbr:

Y

For further technical assistance, please contact us...

Thomas & Betts - USA
8155 T&B Blvd.
Memphis, TN 38125
www.tnb.com

T&B Technical Support
MS 3B-50
8155 T&B Blvd.
Memphis, TN 38125

Hours: 7AM - 6PM CDT
Monday-Friday
Phone: (888) 862-3289
Fax: (901) 252-1321
Email:techsupport@tnb.com