

Floor Boxes Systems



665-SC



840, 640 Series —
Flush Multiple Service

The aesthetic and technical needs of today's buildings are as diverse as the equipment that fills them. Small wonder, then, that floor boxes can continue to solve the needs of today and the future as they did in the early 1900's when they were invented.

They are still a contemporary, capable and cost-effective wire management system. Steel City®, a pioneer in both the design and applications of floor boxes since 1904, invites you to discover, or rediscover, the possibilities.

Three Levels of Service



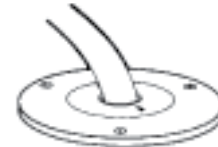
664 Series

Concealed Service

All power, communications and data devices are hidden below the finished floor level.



P60 Series — Power Application



P60 Series — Communication/Data Application



600 Series

Flush Service

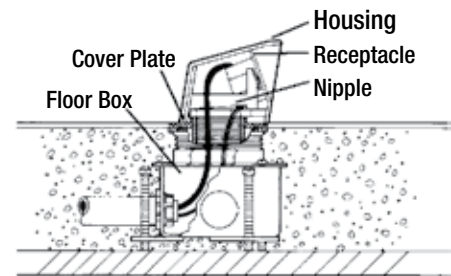
All power devices are mounted at the finished floor level.



SFH-40 Series

Above Floor Service

All power devices are mounted in a service fitting head above the finished floor.



Multiple Service Capabilities: Power, Communication and Data in One Unit



665-SC



AFM-6



665-SC

Building Design Flexibility

Floor Boxes Designed for the Following Applications:



71W Series
(complete kit)



664-SC
Slab on Grade
Steel Deck with
Concrete Pour



664-S
Slab on Grade
Steel Deck with
Concrete Pour



664-CI
Two Pour
Concrete



61-W
Wood Floor



62-W
Wood Floor



63-W
Wood Floor



672
Wood Floor

New Construction or Retrofit Applications

